

# GEOLOGICAL MAP OF PIEMONTE REGION (NW ITALY)

F. Piana (1), G. Fioraso (1), A. Irace (1), P. Mosca (1), A. d'Atri (3), L. Barale (1), P. Falletti (2), G. Monegato (1), M. Morelli (2), S. Tallone (1), G.B. Vigna (4)

(1) CNR-IGG, Turin (2) Arpa Piemonte, Turin (3) DST - Torino University (4) DIATI - Polytechnic University of Torino

## Tectonic sketch map

### Legend

#### Alpine Internal Belt (Southalpine Domain)

##### Palaeo-Adriatic Continental Margin

- SAS: Southalpine sedimentary succession
- LPC: Permian magmatic Complex
- LS: Serie dei Laghi Complex
- IVMC: Ivrea-Verbano Mafic Complex
- IVKC: Ivrea-Verbano Kinsigic Complex

#### Alpine Axial Belt (Penninic Domain)

##### Palaeo-European Continental Margin

- BMU: Internal Briançonnais Units
- AL: Accoglio-Longet Unit
- PP: Continental Distal Margin (Pre-Piemontese "Auc")
- BB: Briançonnais Polymetamorphic Basement
- DM: Dora-Maira Units
- AMM: Ambin Massif
- GPM: Gran Paradiso Massif
- MR: Monte Rosa Units
- CAMU: Camughera-Monucco-Orgoglio-Isorno
- MLU: Monte Leone Unit
- ALT: Antigorio-Lebedun-Teggiolo Units
- VU: Verampio Units

##### Palaeo-Adriatic Continental Margin (Austroalpine Domain)

- SLZ: Sesia-Lanzo Zone

##### Liguria-Piemonte Oceanic Units

##### Metamorphic units

- OU: undifferentiated oceanic units
- Vo VL: Voltri, Viso, Lanzo ultramafic units
- AU: Antrona Unit

##### Non-metamorphic units

- CU: Chenaillet Unit
- LU: Ligurian units of Northern Apennines and Maritime Alps

##### Valais Domain

- VD: Valais units

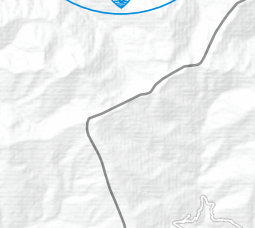
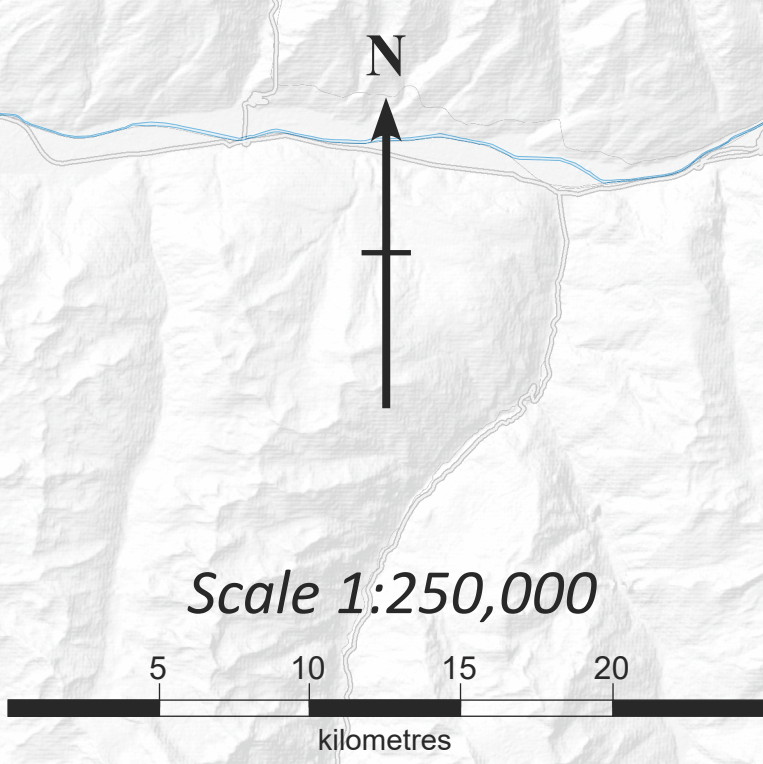
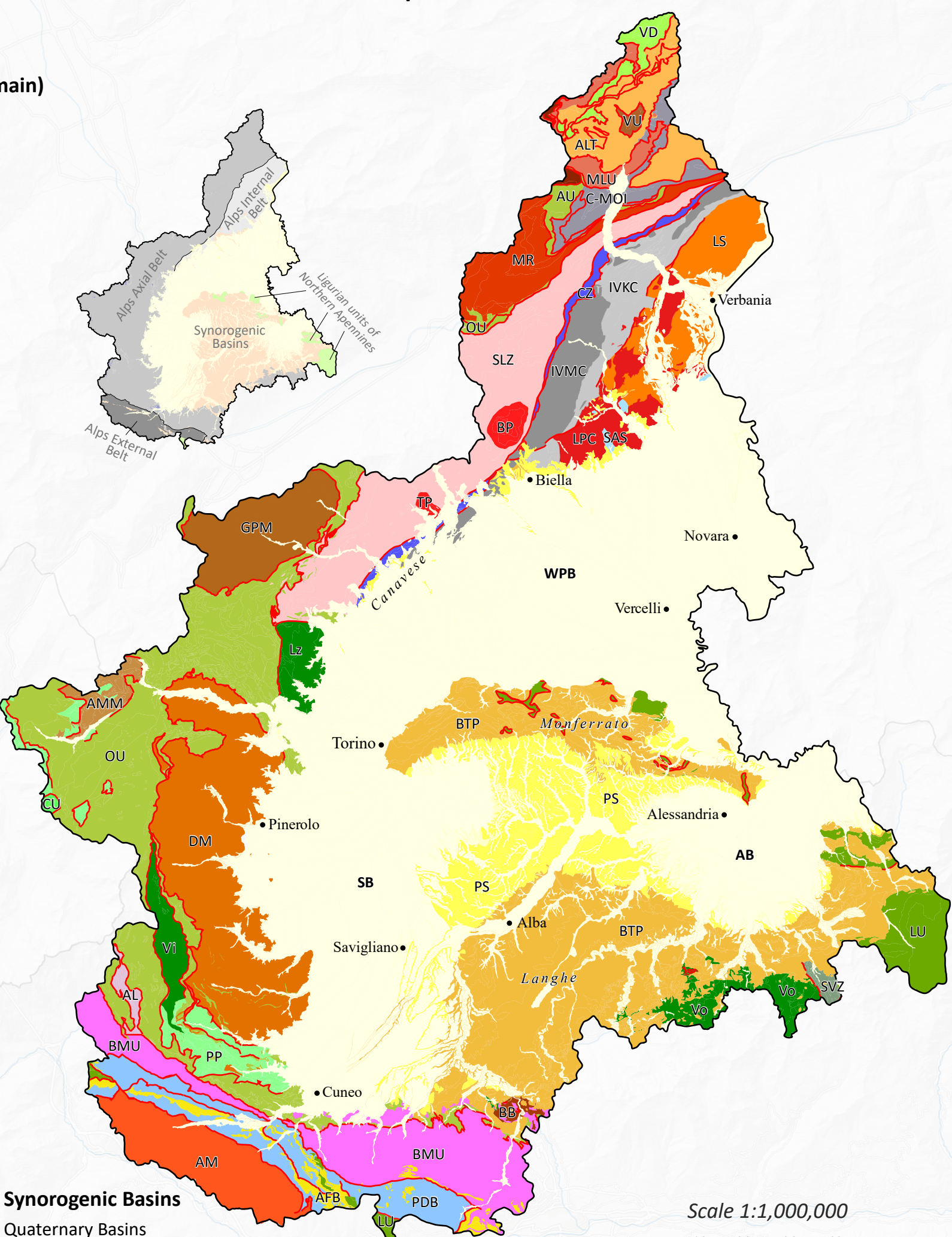
#### Alpine External Belt

##### Palaeo-European Continental Margin

- PDB: Provençal-Dauphinois-External Briançonnais successions
- AM: Argentera Massif

##### Tectonic Slice Zones

- CZ: Canavese Zone
- SVZ: Sestri-Voltaggio Zone



### MAP SYMBOLS

- Geological contact: stratigraphic boundaries
- Geological contact: unconformities
- Faults and second-order tectonic contacts
- Main tectonic contacts
- Altaian fan

Scientific and technical committee: F. Piana<sup>1</sup>, G. Fioraso<sup>1</sup>, A. Irace<sup>1</sup>, P. Mosca<sup>1</sup>, P. Falletti<sup>2</sup>, A. d'Atri<sup>3</sup>

Editorial staff for thematics and geographical areas:

#### Synorogenic basins

- Quaternary successions: G. Fioraso, G. Monegato<sup>1</sup>
- Savignone Basin: G. Fioraso, A. Irace
- Alessandria Basin: G. Fioraso, L. Barale<sup>1</sup>, A. Irace
- Western Po Basin: G. Fioraso, G. Monegato, F. Giamoni<sup>1</sup>, S. Tacchetti<sup>1</sup>
- Pliocene succession: Southern Pliocene Basin: B. Vigna<sup>1</sup>, A. Irace, D. Varrone<sup>1</sup> With contributions of: M. Ghelini<sup>1</sup>, D. Violani<sup>1</sup>
- Northern Pliocene Basin: A. Irace, G. Monegato, G. Fioraso, P. Falletti

#### Tertiary Piemonte Basin

- Langhe: B. Vigna, A. d'Atri, A. Irace, P. Mosca, F. Piana With contributions of: F. Della Porta<sup>1</sup>, M. Ghelini, M. Rossi<sup>1</sup>
- Torino hills, Monferrato, Alta Monferrato: Serravalle-Messinian succession: A. Irace, A. d'Atri, F. Della Porta, A. Festa<sup>1</sup>
- Eocene-Langhian succession: A. d'Atri, F. Piana, A. Irace, A. Festa, D. Varrone
- Val Bormea-Grua: A. Irace, A. d'Atri, A. Irace, F. Piana

#### Map drawing

- L. Barale, P. Falletti, G. Fioraso, A. Irace, P. Mosca, D. Varrone, L. Maffei<sup>1</sup>, G. Monegato, M. Morelli, E. Mulazzano<sup>1</sup>, G. Nicolini<sup>1</sup>
- Database: F. Piana, L. Barale, M. Morelli, E. Mulazzano, R. Pappalardo<sup>1</sup>, S. Tallone, D. Varrone

#### Production of the topographic basemap

- L. Forestello<sup>1</sup>, E. Bonaccorsi<sup>1</sup>

#### Other Geological Units

- Ossola - Laghi: P. Falletti, F. Piana
- Sesia valley-Biellesse: P. Falletti, F. Piana, L. Barale<sup>1,2</sup>
- Canavese: P. Falletti, P. Mosca
- With contributions of: S. Ferrando<sup>1</sup>
- Gran Paradiso: P. Mosca, M. Morelli<sup>1</sup>, R. Compagnoni<sup>1</sup>
- Sesia-Lanzo Unit: M. Beltrando<sup>1</sup>, P. Mosca, P. Falletti
- With contributions of: R. Compagnoni
- Susa-Chivasso-Pellice: P. Mosca
- With contributions of: G. Balestro<sup>1</sup>, M. Gattiglo<sup>1</sup>, A. Borghi<sup>1</sup>, P. Cadoppi<sup>1</sup>, B. Lombardo<sup>1</sup>, S. Tallone<sup>1</sup>
- Po valley and Western Cuneo valleys: P. Mosca
- With contributions of: B. Lombardo, M. Gattiglo
- Southern Dora-Maira: C. Groppo<sup>1</sup>, P. Mosca, F. Ruffo<sup>1</sup>, R. Compagnoni
- Argentera: R. Compagnoni
- With contributions of: S. Ferrando, B. Lombardo
- Maritime and Western Ligurian Alps: L. Barale, C. Bertoli, A. d'Atri, F. Piana, L. Morise, A. Musco, D. Varrone
- Eastern Ligurian Alps: P. Mosca, F. Piana, S. Tallone

#### Tectonics

- P. Mosca, F. Piana, S. Tallone, G. Fioraso, A. Irace, M. Morelli
- With contributions of: G. Balestro, M. Beltrando, P. Cadoppi, P. Falletti, G. Perrone<sup>1</sup>

(1) Institute of Geosciences and Earth Resources, CNR (National Research Council), Turin, Italy; (2) Arpa Piemonte, Environmental Agency, Turin, Italy; (3) Department of Earth Sciences, Torino University, Turin, Italy; (4) DIATI, Polytechnic University of Torino, Italy; (5) ENI SpA, San Donato Milanese, Italy