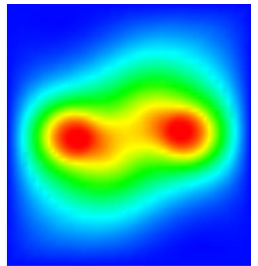
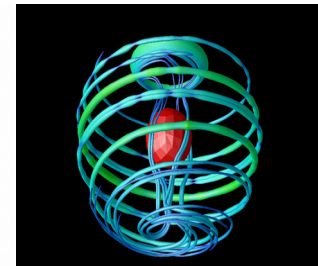
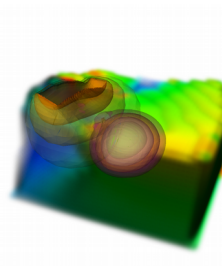
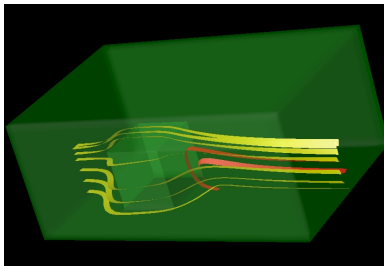
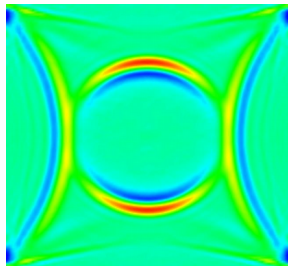
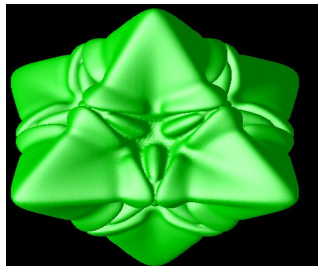


# *SSI: Open Source Support for Massively Parallel, Generic Finite Element Methods*

(NSF grant OCI-1148116)

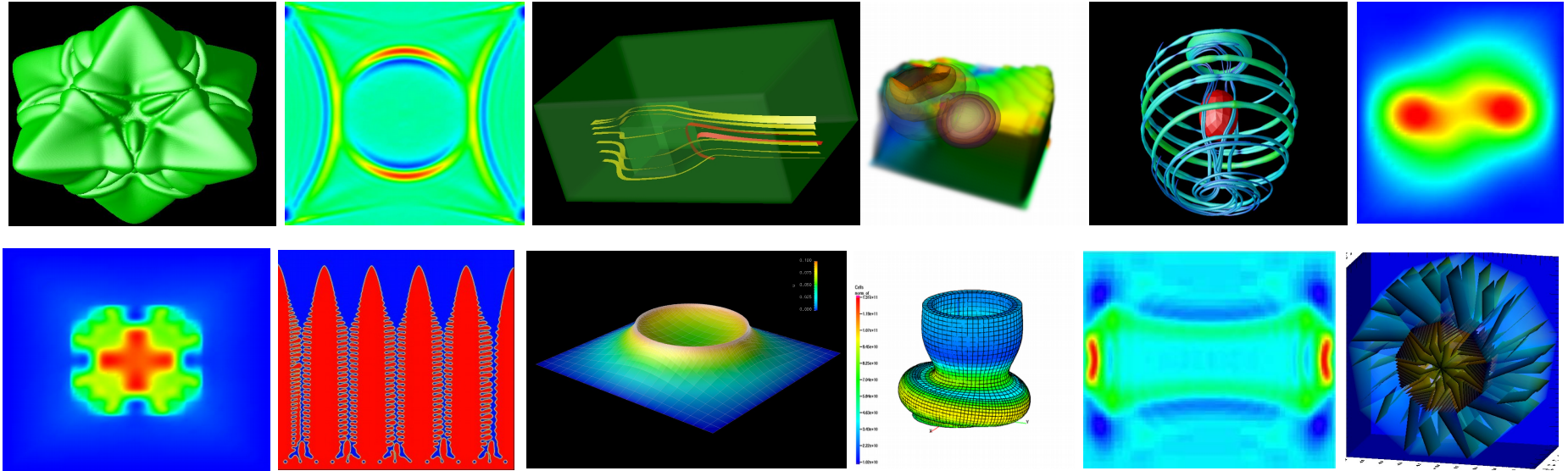
**Wolfgang Bangerth**

Colorado State University



## deal.II

A library for finite element computations that supports...



...a large variety of PDE applications tailored to non-experts.

### **Fundamental premise:**

Provide building blocks that can be used in many different ways, not a rigid framework.

## deal.II

### Status today:

- 1.1M lines of C++ code
- Scales from laptop to 150,000 cores, GPUs, accelerators
- 1000 downloads per month
- 30-40 active developers every quarter
- 4000 commits per year
- Used in teaching around the world
- Used in 1,500 publications in all sciences

