

# SI2-SSE: Analyze Visual Data from Worldwide Network Cameras (Continuous Analysis of Many CAMeras, CAM<sup>2</sup>), NSFACI-1535108

PI: Yung-Hsiang Lu, [yunglu@purdue.edu](mailto:yunglu@purdue.edu) <https://www.cam2project.net/>

## SUMMARY OF 2017-2018

- New Collaborators:



- Open-Source in github
- REST interface

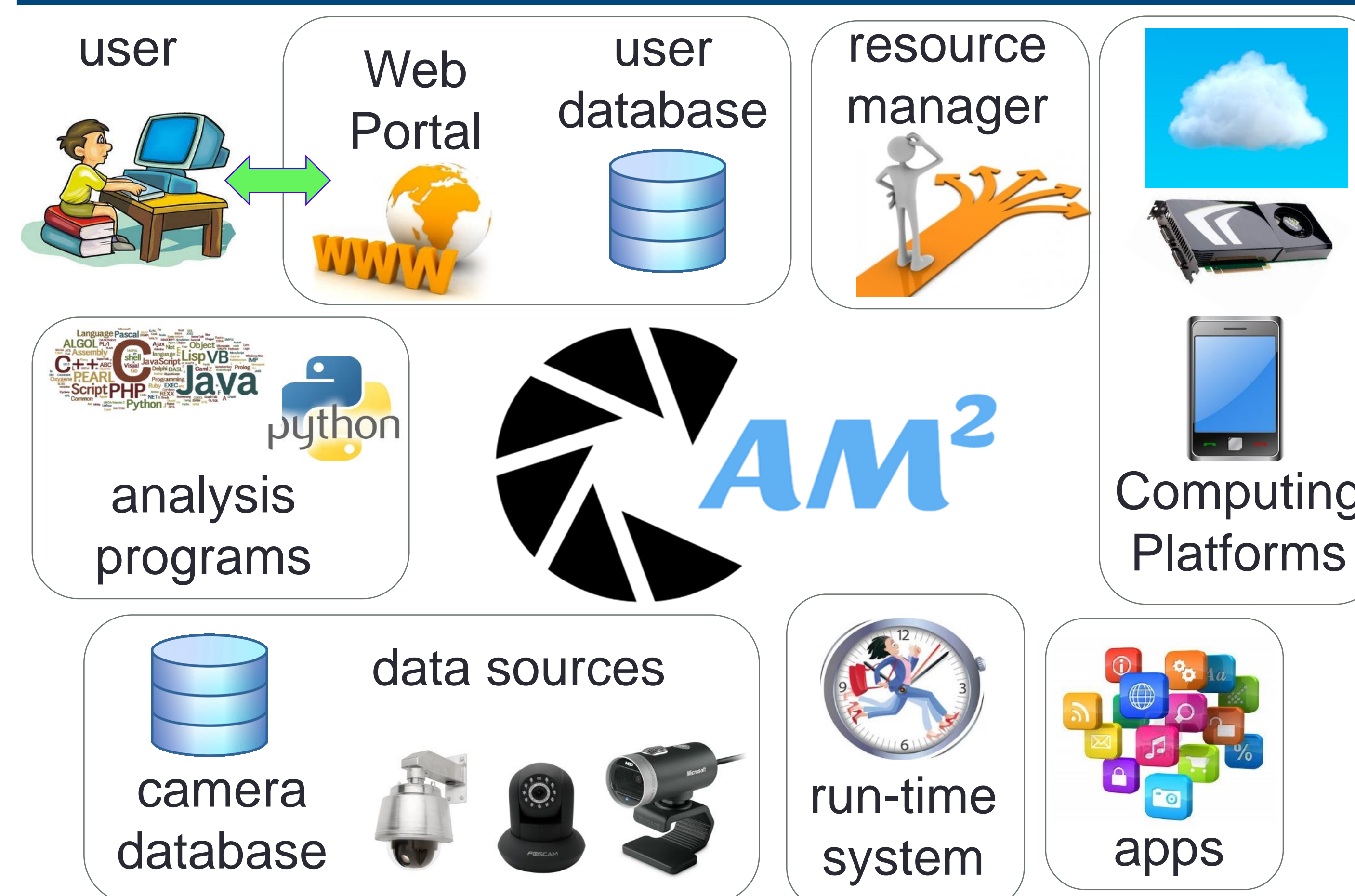
## NEW PUBLICATIONS

- IEEE Transactions on Cloud Computing
- IEEE International Conference on Multimedia Information Processing and Retrieval 2018.
- ACM Multimedia 2017
- IEEE International Conference on Information Reuse 2017
- "Parallel Video Processing using Embedded Computers", IEEE Global Conference on Signal and Information Processing 2017
- "Creating the World's Largest Real-Time Camera Network", Imaging and Multimedia Analytics in a Web and Mobile World 2017
- "Internet of Video Things in 2030: a World with Many Cameras", IEEE International Symposium of Circuits and Systems 2017.

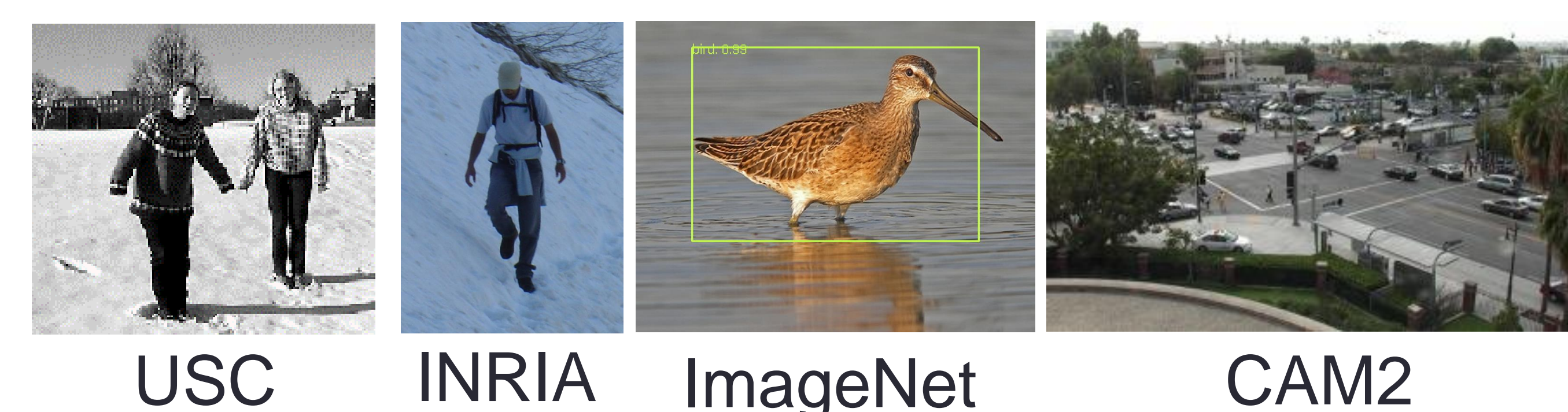
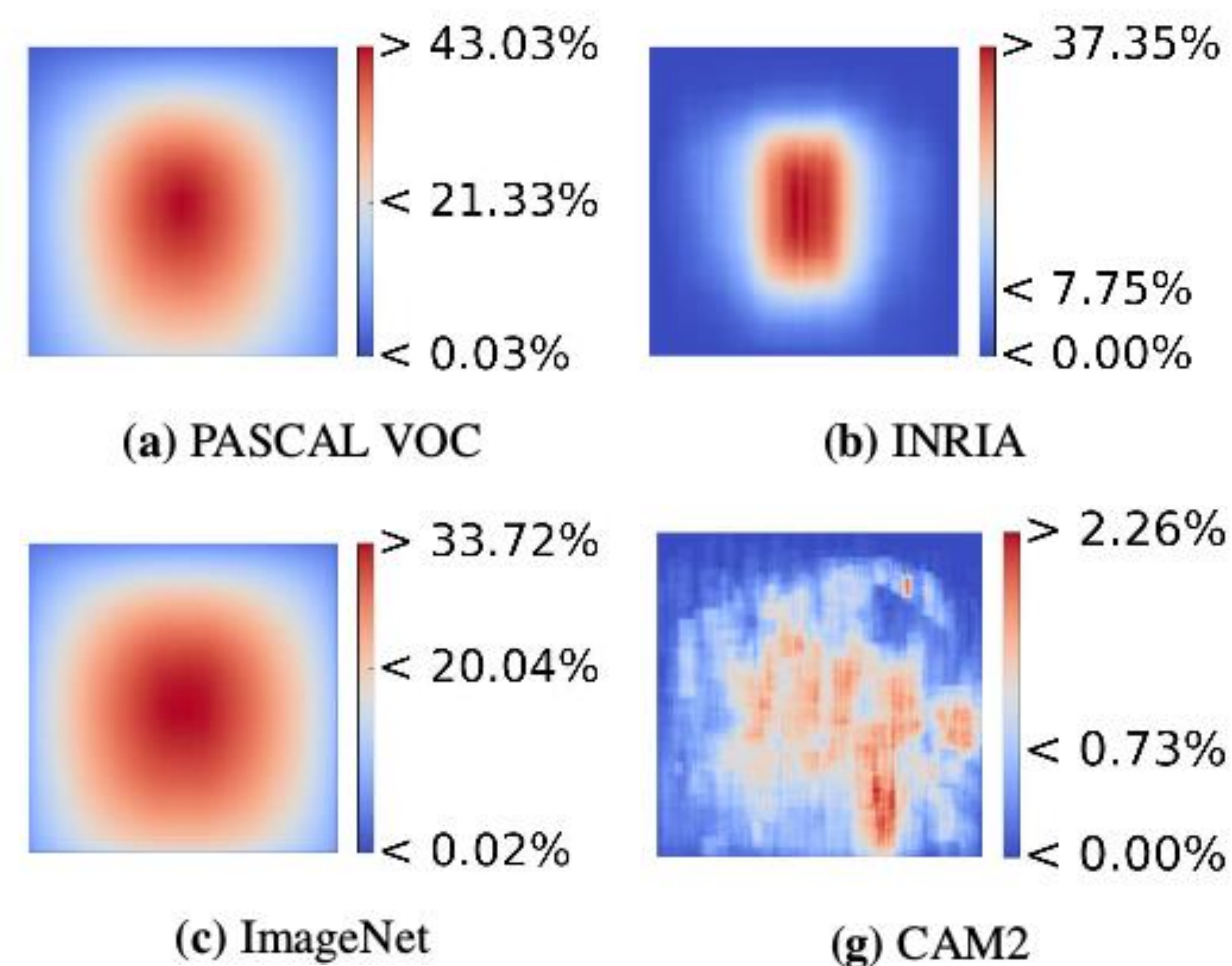
## MEDIA COVERAGE



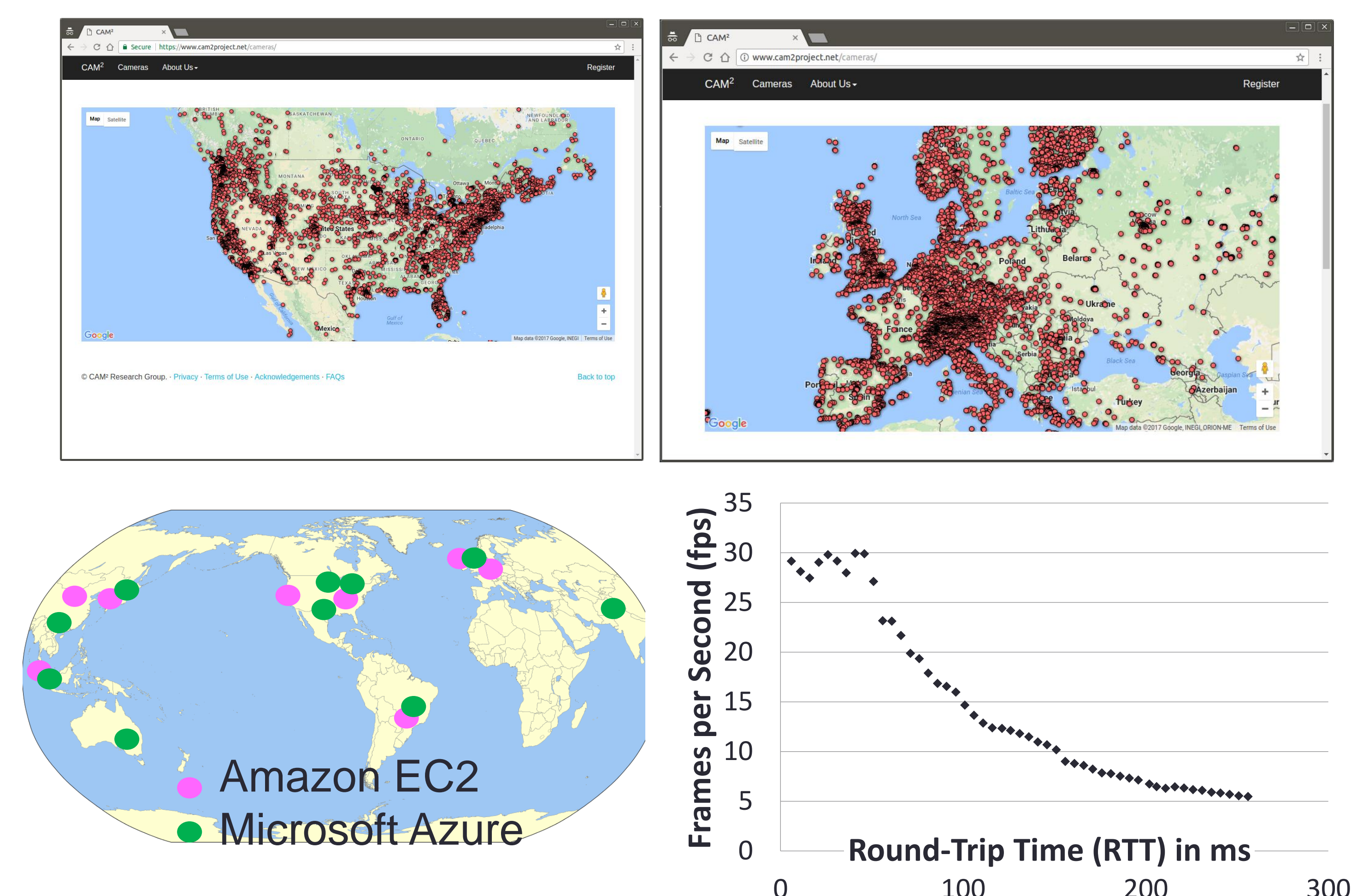
## CAM2 COMPONENTS



## UNDERSTAND DATA BIAS



## GLOBAL SCALE



## USER RECRUITMENT AND OUTREACH

Vertically Integrated Projects  
Midwest Undergraduate Research Workshop



## COMMERCIAL SPIN-OFF

