

Figure S1

Toluidine blue staining of semi-thin transverse sections of SOD1-G93A and littermate control mice at P30.

Figure S2

(A-B) Representative immunohistochemistry staining for CHAT in SOD1-G93A and littermate control mice at P60, P90 and P120. Quantification showed that the ChAT positive cell decreased. (n = 3 mice for each group; data are presented as means \pm SEM)

Figure S3

(A) P120 SOD1-G93A and littermate control mice were tested on an accelerating rotarod from 15 rpm to 40 rpm for three 600-s periods, with a 10-min break between each test (the mean \pm SEM of each group was plotted; n = 10 mice per group). (B) According to the footprint analysis, the walking patterns of P120 SOD1-G93A mice were impaired compared to those of the P120 littermate control mice.

Figure S4

qRT-PCR analysis of Igf-1, Gdnf, brain-derived neurotrophic factor (Bdnf), Cntf and Ptn mRNA expression in SOD1-G93A and littermate control mice at P120 (n = 3 mice for each group; data are presented as means \pm SEM).

Figure supplement 1

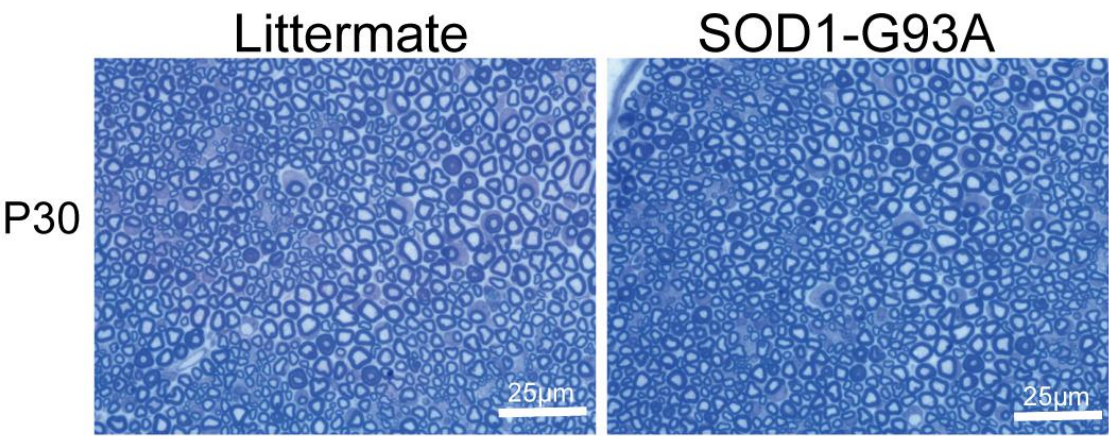


Figure supplement 2

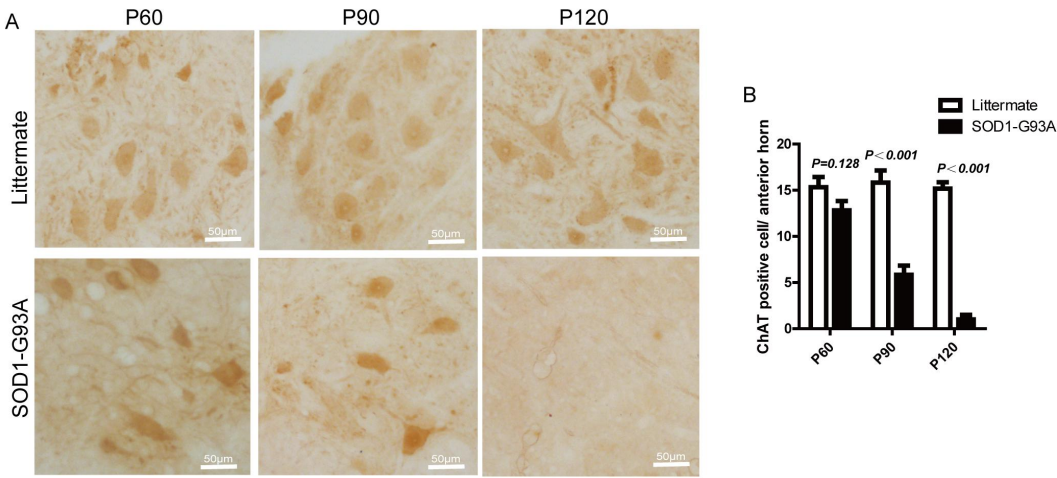


Figure supplement 3

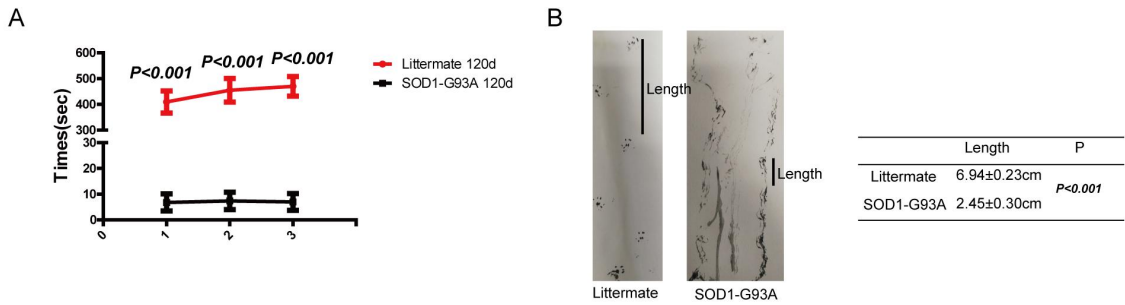


Figure supplement 4

