

Thyroid swelling: a common phenomenon in art?

Remo Accorona^a, MD, Inge Huskens^b, MA, Jeroen Meulemans^c, MD, Piero Nicolai^a, MD, Carlo Cappelli^d, MD, Davide Lombardi^a, MD

^aUnit of Otorhinolaryngology - Head and Neck Surgery, University of Brescia, Brescia, Italy

^bDepartment Collections and Research, Netherlands Institute for Art History, The Hague, The Netherlands

^cOtorhinolaryngology - Head and Neck Surgery and Department of Oncology, Section Head and Neck Oncology, University Hospitals of Leuven, KU Leuven, Leuven, Belgium

^dDepartment of Medical and Surgical Sciences, Endocrine and Metabolic Unit, University of Brescia, Brescia, Italy

SUPPLEMENTAL MATERIAL

Figure 1. First drawing of thyroid in the anatomical studies by Leonardo da Vinci (1510).

Figure 2. Drawing of thyroid gland in *De Humani Corporis Fabrica* by Andreas Vesalius (1543).

Figure 3. (A) The “Borghese Deposition” (B) Detail (Raffaello Sanzio, 1507), oil on panel,

© Galleria Borghese, Rome, Italy.

Figure 4. “The Transfiguration of Christ”; (Raffaello Sanzio, 1516–1520), tempera on panel,

© Museo Nacional del Prado / © Photographic Archive Museo Nacional del Prado, Madrid, Spain.

Figure 5. “Grotesque Head” also known as “Scaramuccia, king of the gypsies” (Leonardo da Vinci, 1500-1505), drawing, © Christ Church, Oxford University, Oxford, U.K.

Figure 6. “The Crucifixion of Saint Andrew”; detail (Caravaggio, 1607), oil on canvas,

© Cleveland Museum of Art / © Photographic Archive Cleveland Museum of Art, Cleveland, OH,
U.S.A.

Figure 7. “Roger freeing Angelica”, (Jean-Auguste Dominique Ingres, 1819-1839), oil on canvas,

© The National Gallery, London, U.K.

Figure 8. “The Crucifixion” (Primo Conti, 1924), oil on canvas, Santa Maria Novella’s Church,
Florence, Italy.

Figure 9. “Self-portrait” (Antonio Ligabue, unknown year), oil on panel, © Study Center and
Archive “Antonio Ligabue”, Parma, Italy.

Handwritten text in a cursive script, likely from a manuscript, located in the top left corner.

Handwritten text in a cursive script, likely from a manuscript, located in the top right corner.



Handwritten text in a cursive script, likely from a manuscript, located below the large hand drawing on the left side.

Handwritten text in a cursive script, likely from a manuscript, located to the right of the large hand drawing.

Handwritten text in a cursive script, likely from a manuscript, located below the large hand drawing on the left side.



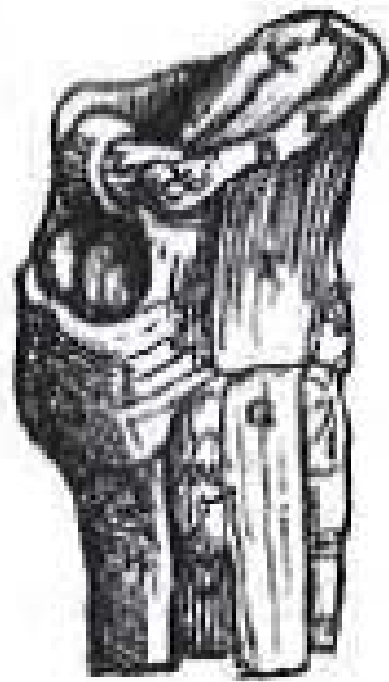
Handwritten text in a cursive script, likely from a manuscript, located between the large foot drawing and the large hand drawing on the right side.



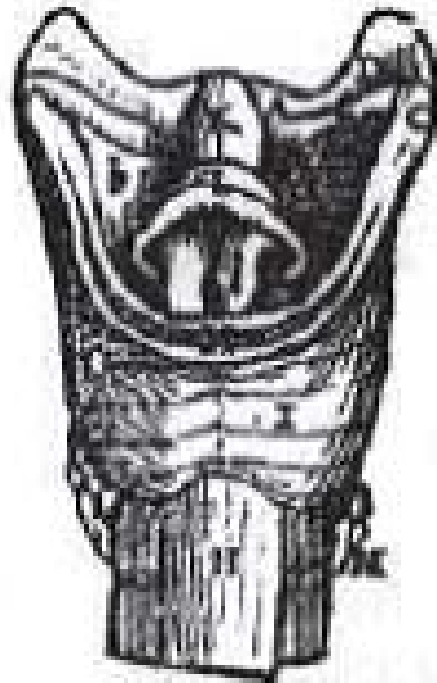
Handwritten text in a cursive script, likely from a manuscript, located below the smaller foot drawing on the right side.



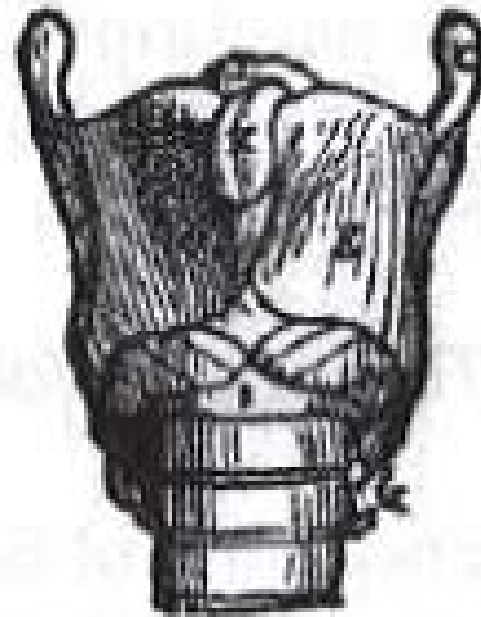
II.



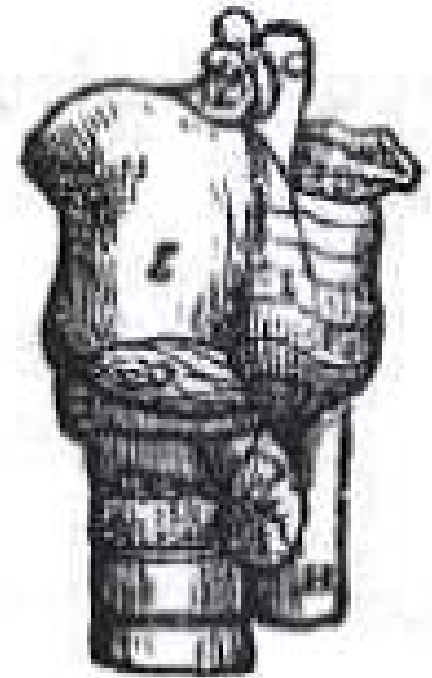
III.



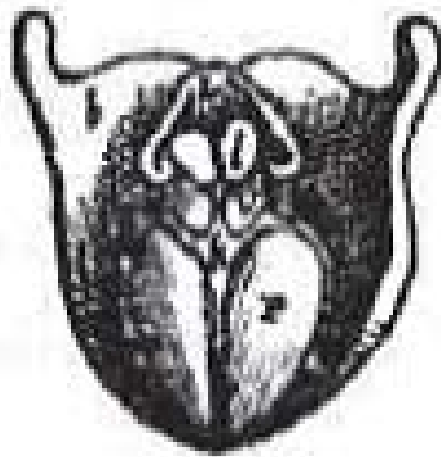
IIII.



V.



VI.



VII.



VIII.

