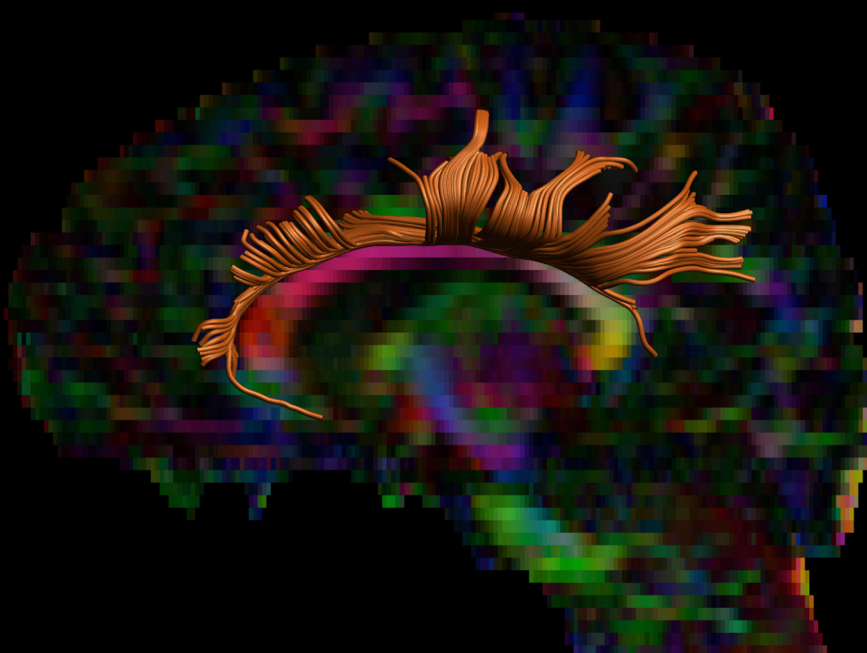
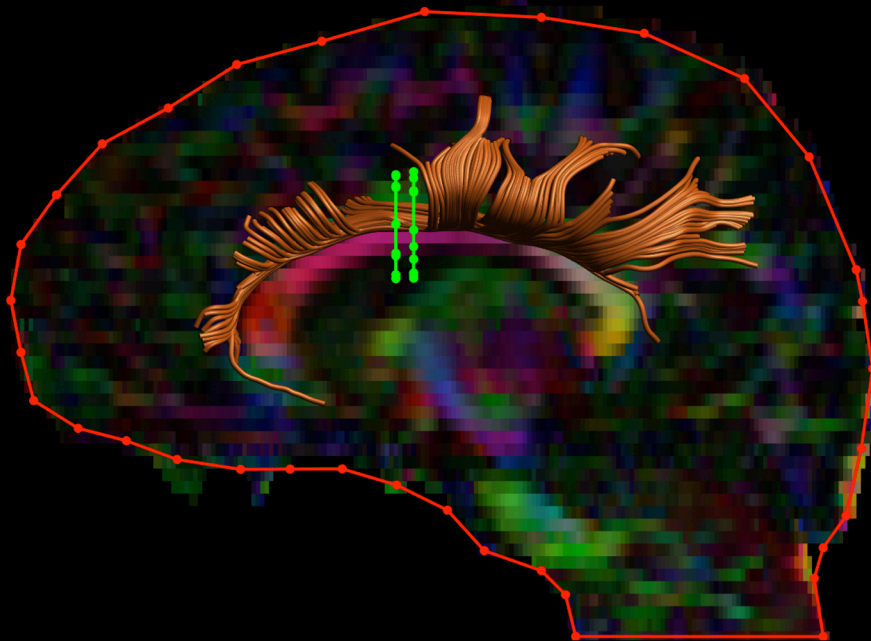


Cingulum



Cingulum

Regions of Interest (ROI):

RED regions of interest: exclusion regions (fibres cannot pass through these regions).

GREEN regions of interest: inclusion regions (fibers must pass through these regions).

Descriptions of ROIs:

*Please note that these ROIs may need to be modified for different data sets, and are not displayed in a standardized space/template.

Coronal ROIs:

1. **AND** ROIs placed just anterior to the coronal midline slice (inclusion ROI circles the cingulum bundles).
2. **AND** ROIs placed just anterior to the coronal midline slice (inclusion ROI circles the cingulum bundles).

* Inclusion AND ROIs (1 & 2) are separated by as few as 3-5 coronal slices

Sagittal ROIs:

3. **NOT** ROI to prevent any fibers crossing midline.

Axial ROIs:

No axial ROIs

Cingulum

