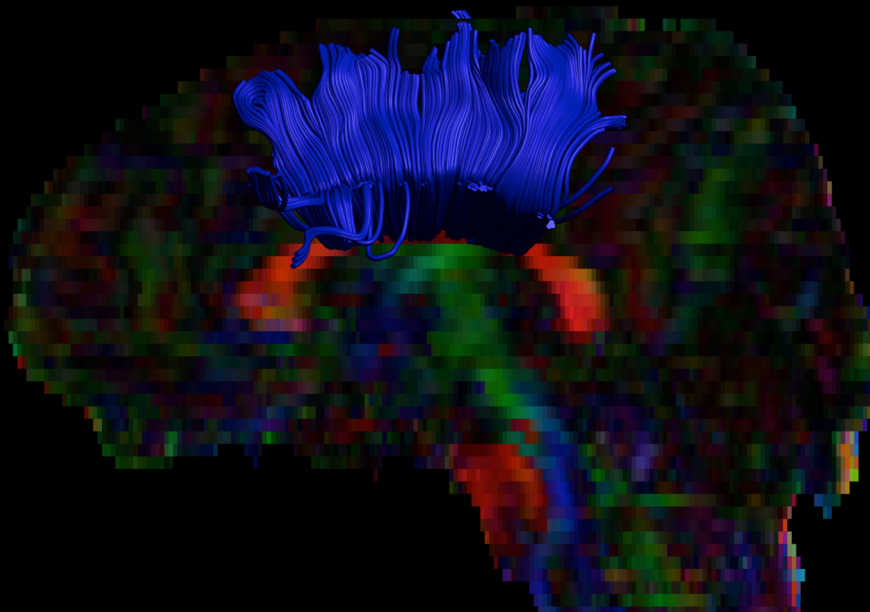
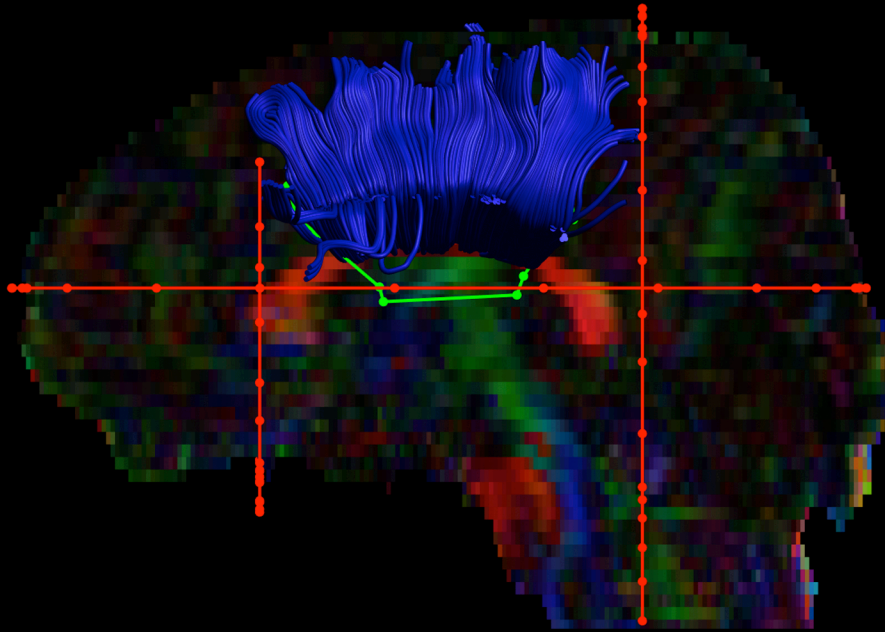


# Corpus Callosum - Body



# Corpus Callosum - Body

## Regions of Interest (ROI):

**RED** regions of interest: exclusion regions (fibers cannot pass through these regions).

**GREEN** regions of interest: inclusion regions (fibers must pass through these regions).

## Descriptions of ROIs:

\*Please note that these ROIs may need to be modified for different data sets, and are displayed not displayed in a standardized space/template.

### Sagittal ROIs:

1. **AND** ROI placed on the central portion of the corpus callosum (genu and splenium **AND** ROIs should be loaded to ensure no overlapping fibers).

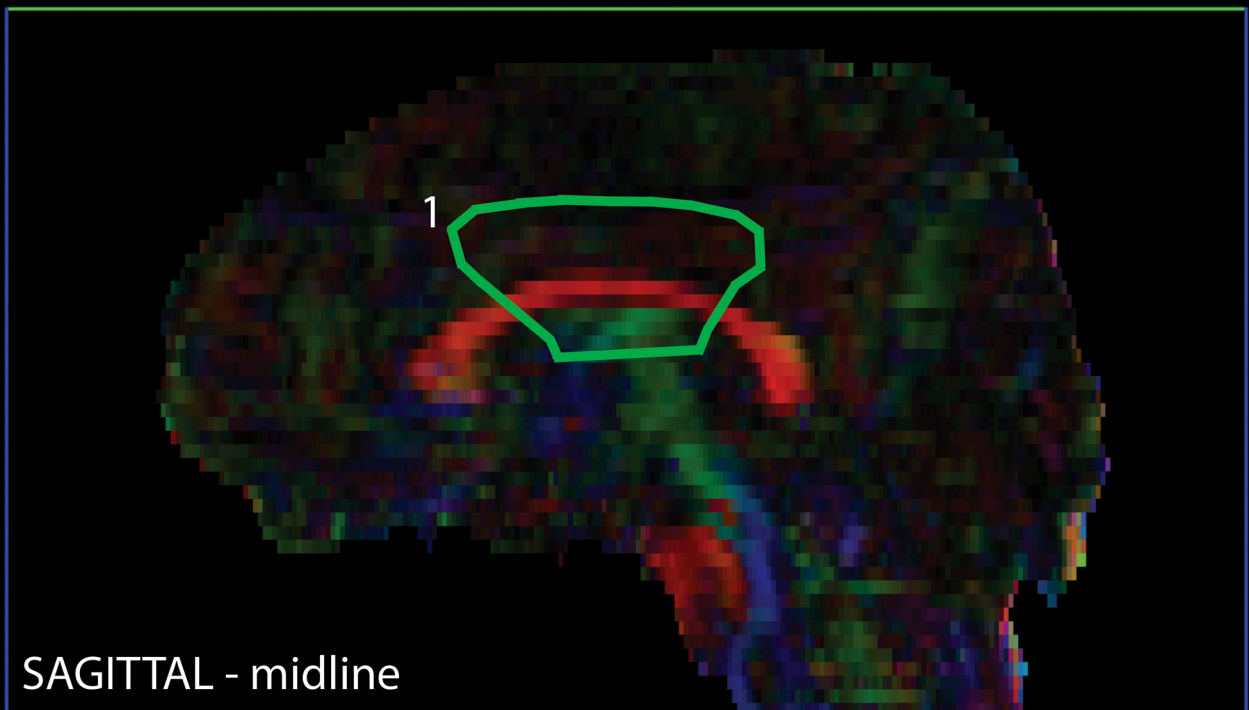
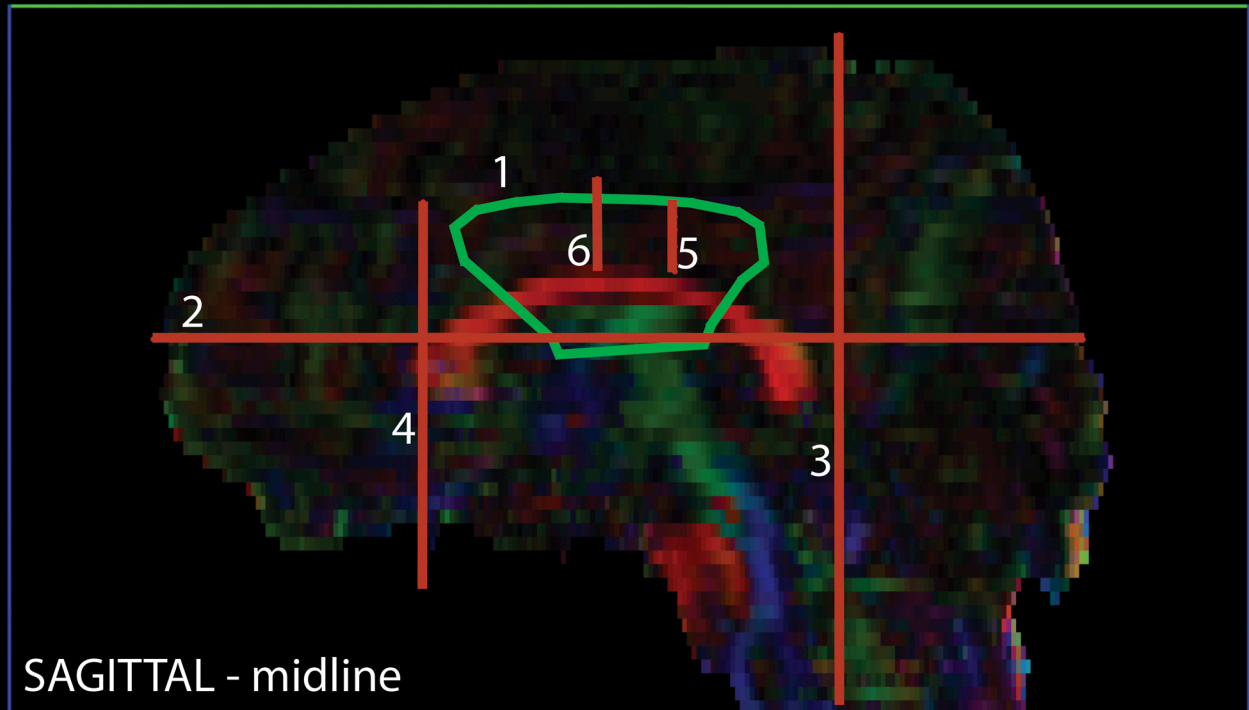
### Axial ROIs:

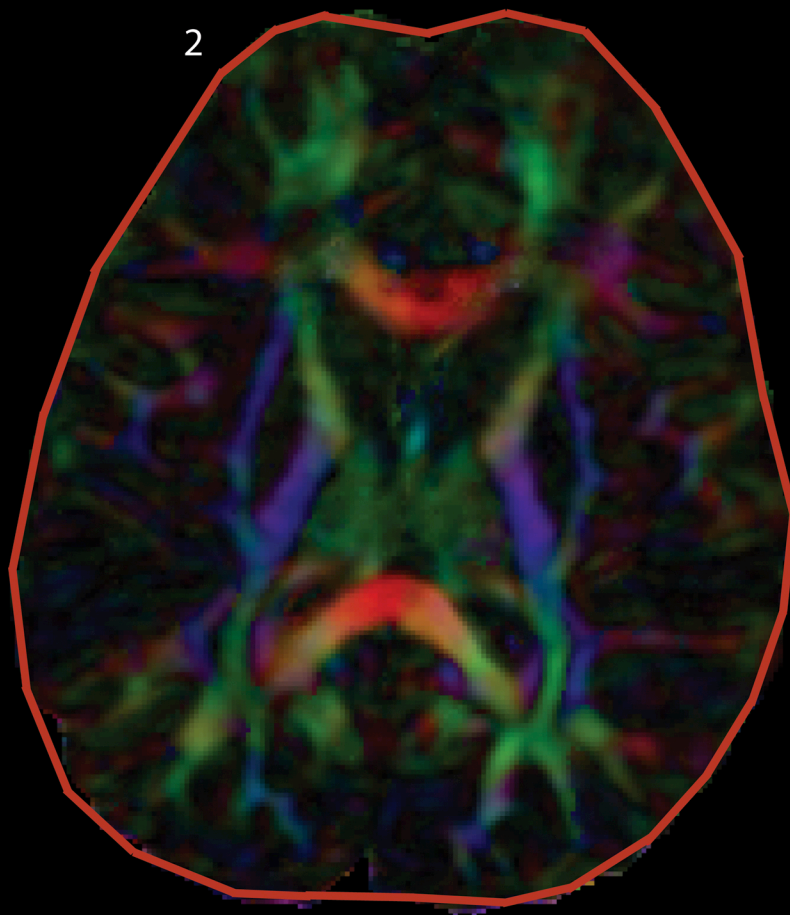
2. **NOT** ROI placed below the lowest axial level of the sagittal AND ROI (1).

### Coronal ROIs:

3. **NOT** ROI placed posterior to the sagittal AND ROI (1). Covers the entire coronal slice.
4. **NOT** ROI placed anterior to the sagittal AND ROI (1). Does not cover the entire coronal slice.
5. **NOT** ROI placed around both cingulum bundles to remove cingulum fibers.
6. **NOT** ROI placed around both cingulum bundles to remove cingulum fibers.  
\* ROI 5 & 6 are within 5-10 coronal slices of each other

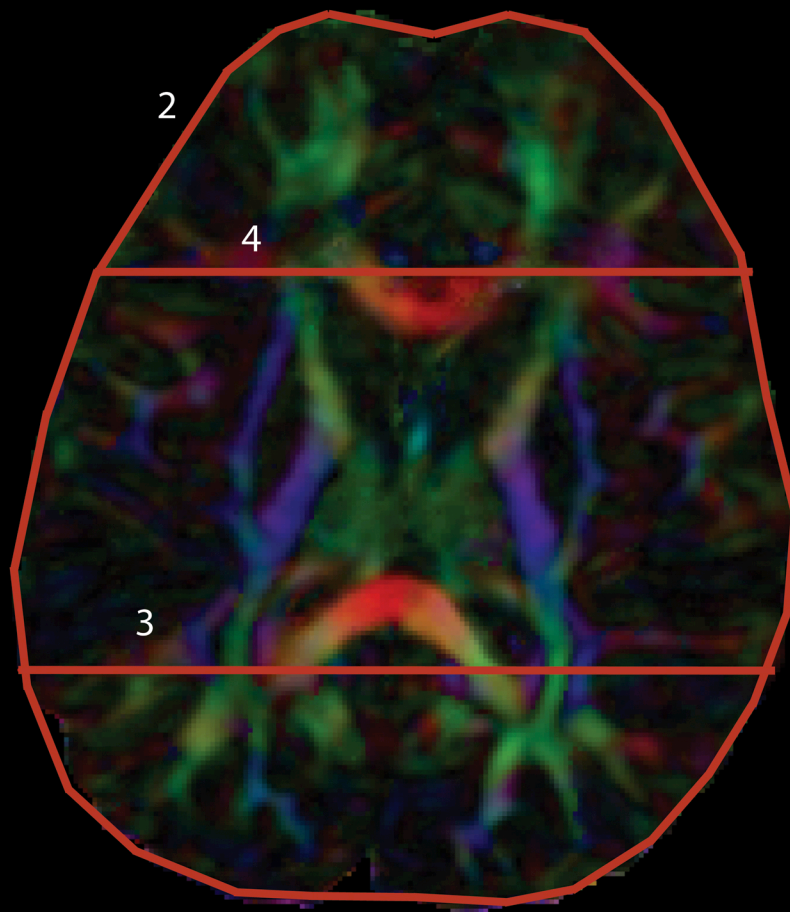
# Corpus Callosum - Body



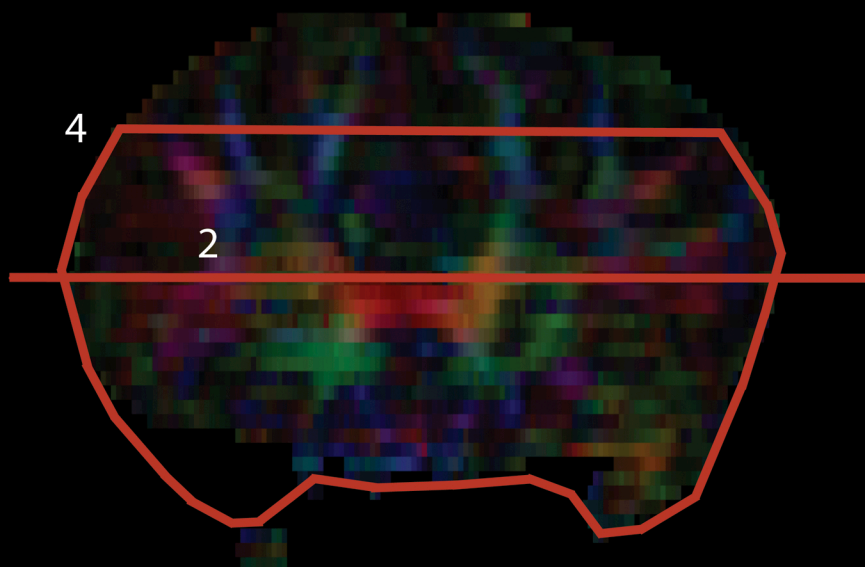


AXIAL - midline

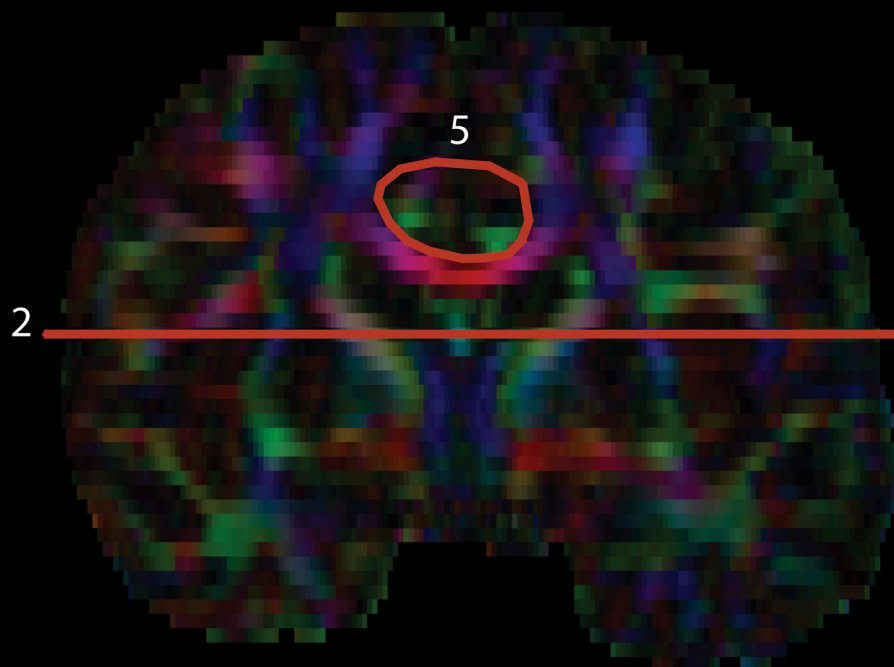




AXIAL - midline



CORONAL -  
anterior



CORONAL - posterior

