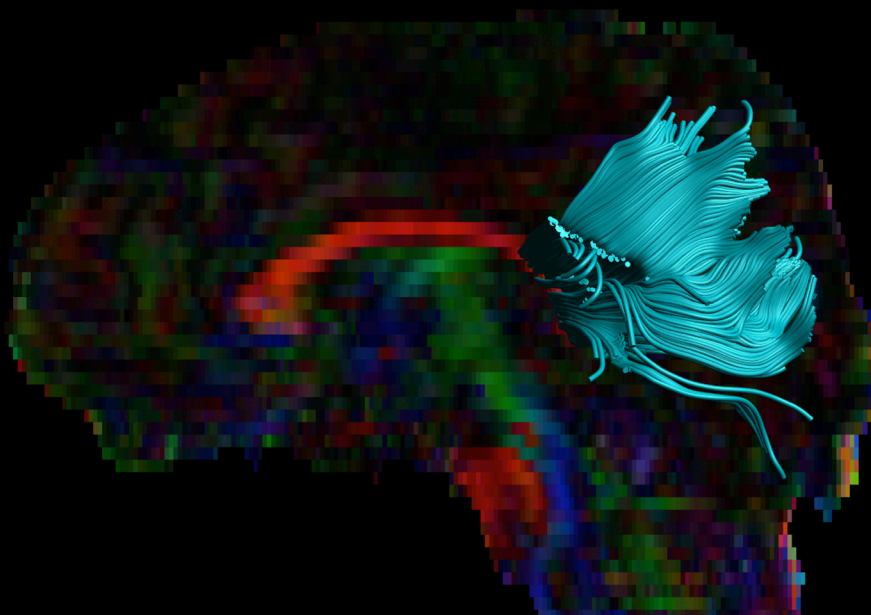
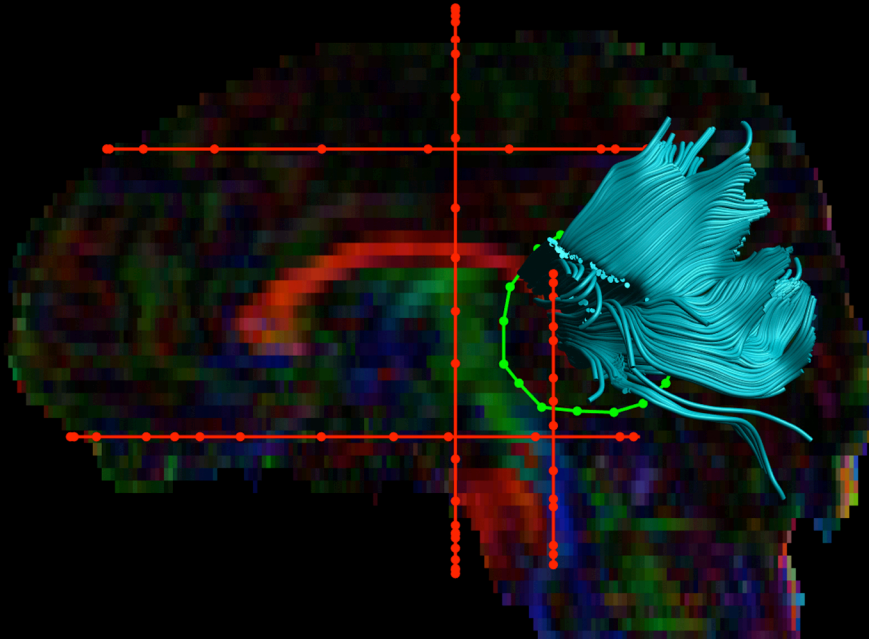


Corpus Callosum - Splenium



Corpus Callosum - Splenium

Regions of Interest (ROI):

RED regions of interest: exclusion regions (fibers cannot pass through these regions).

GREEN regions of interest: inclusion regions (fibers must pass through these regions).

Descriptions of ROIs:

*Please note that these ROIs may need to be modified for different data sets, and are not displayed in a standardized space/template.

Sagittal ROIs:

1. **AND** ROI placed on the posterior portion of the corpus callosum (body **AND** ROI should be loaded to ensure no overlapping fibers).

Axial ROIs:

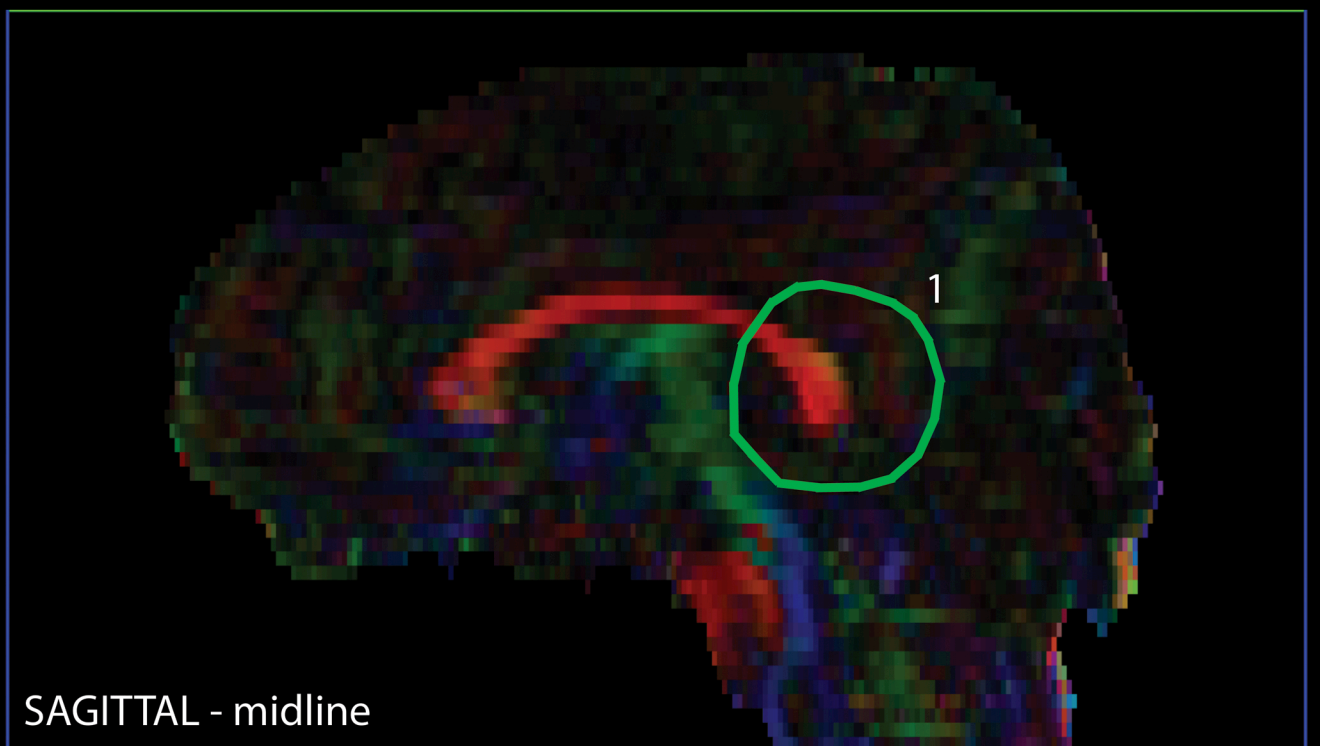
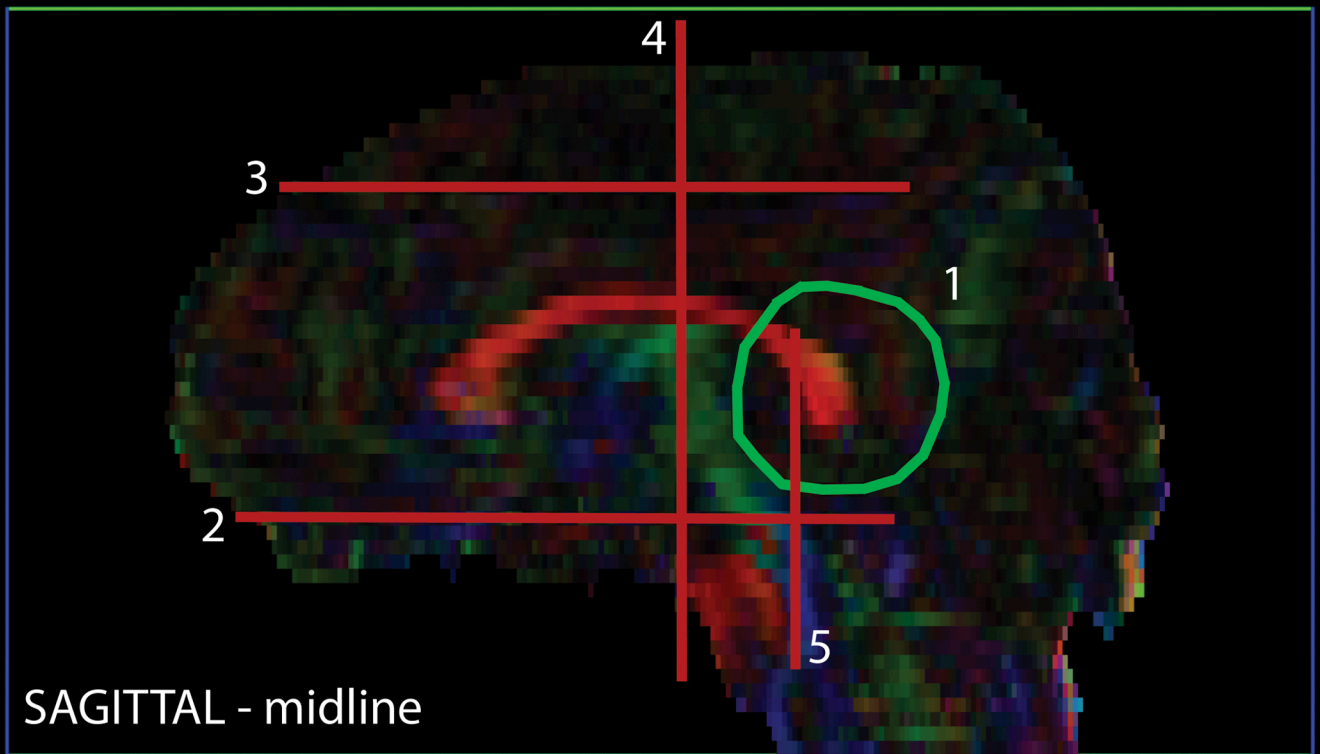
2. **NOT** ROI placed below ROI 1, from posterior bound of ROI, to the anterior bound of the brain, to ensure fibers are projecting to posterior/occipital location.
3. **NOT** ROI placed above ROI 1, from posterior bound of ROI, to the anterior bound of the brain, to ensure fibers are projecting to posterior/occipital location. This ROI (3) is placed along the edge of (and including) the somatosensory/postcentral gyri, to ensure fibers are NOT projecting to the pre- or post-central gyri (motor and sensory cortices).

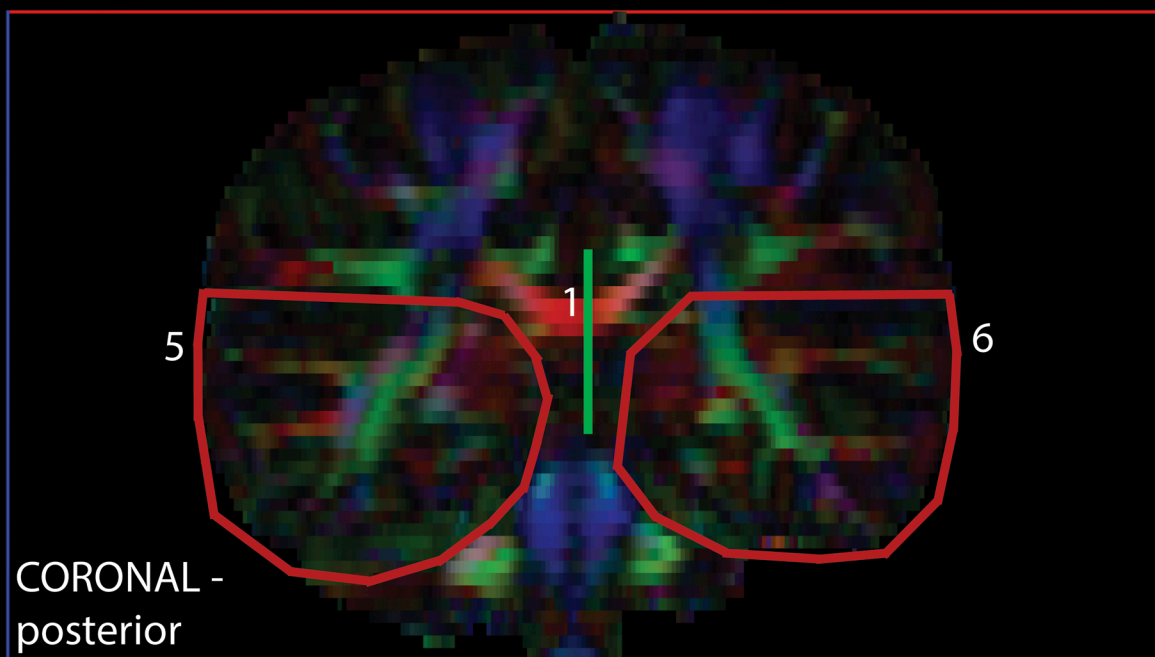
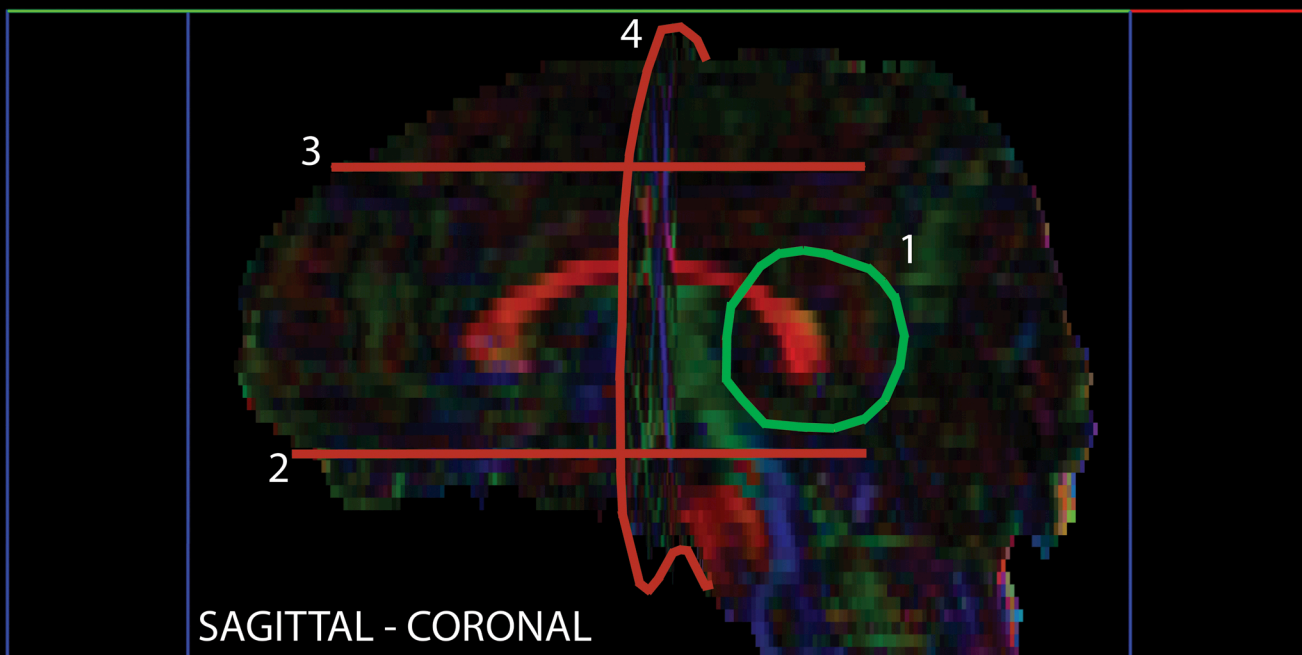
Coronal ROIs:

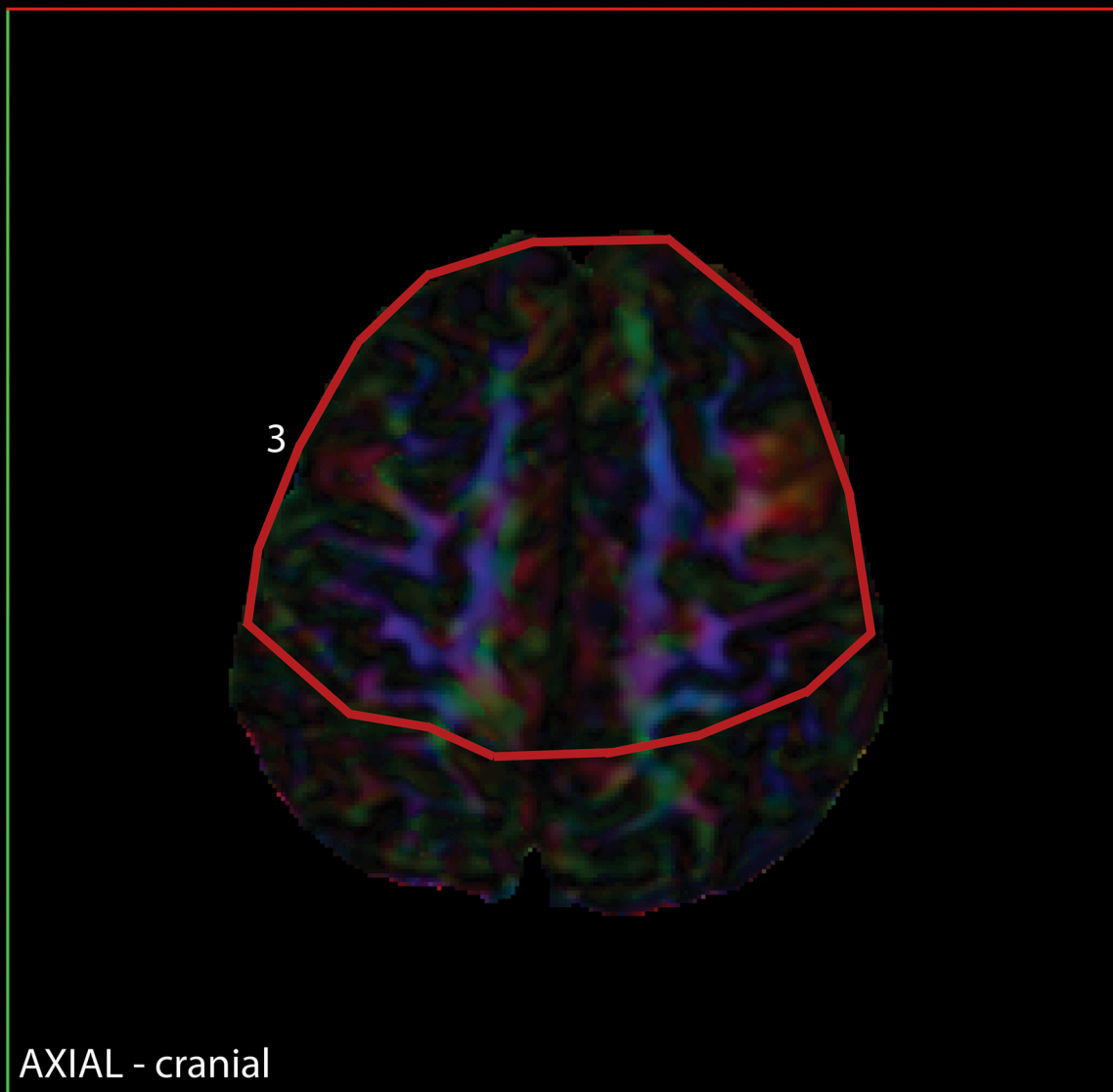
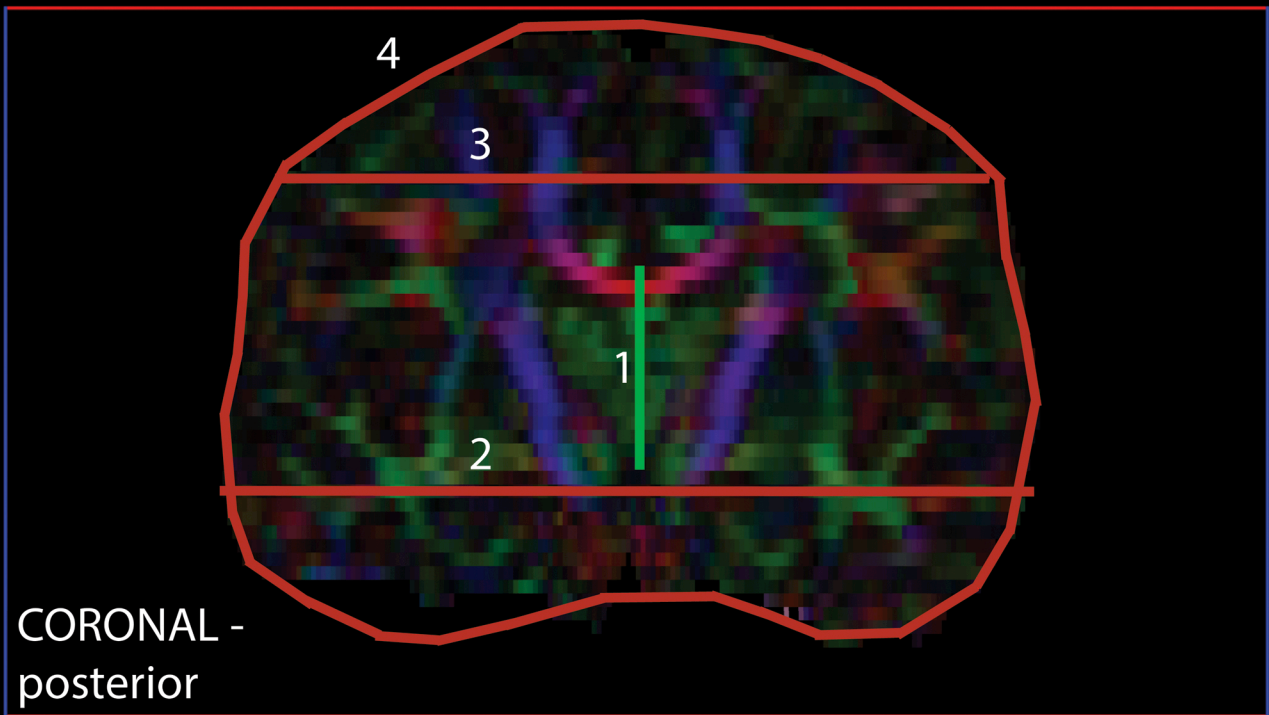
5. **NOT** ROI placed just below the level of the corpus callosum to the base of the brain, on the left side of the brain.
6. **NOT** ROI placed just below the level of the corpus callosum to the base of the brain, on the right side of the brain.

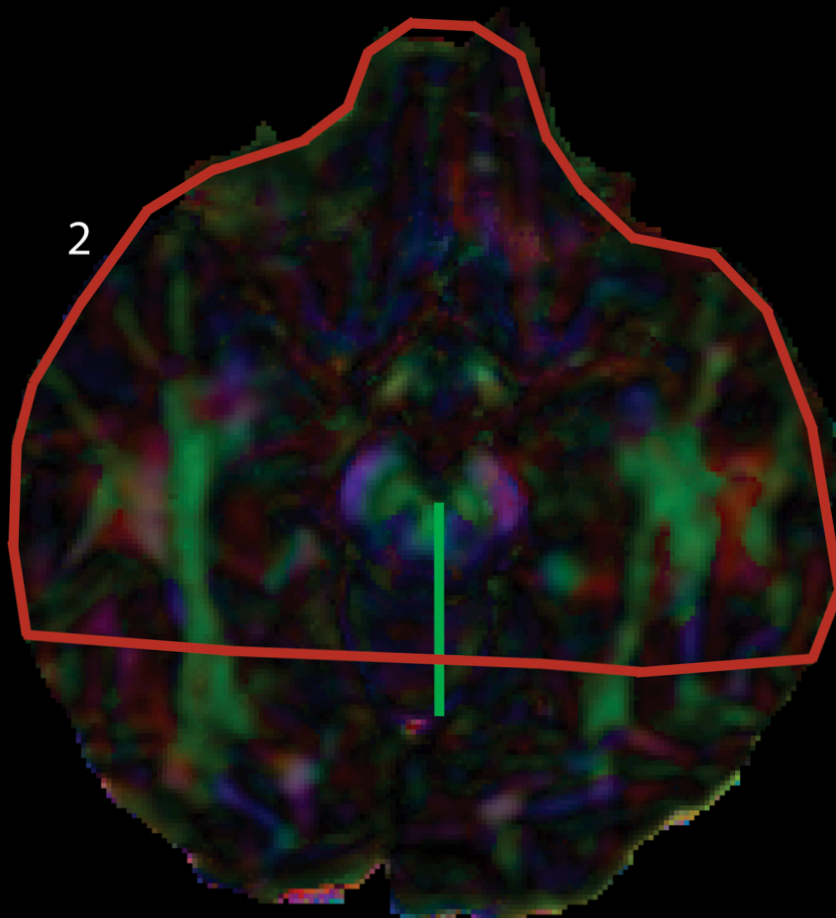
* Remove these ROIs to include temporal projecting splenium fibers

Corpus Callosum - Splenium









AXIAL - caudal