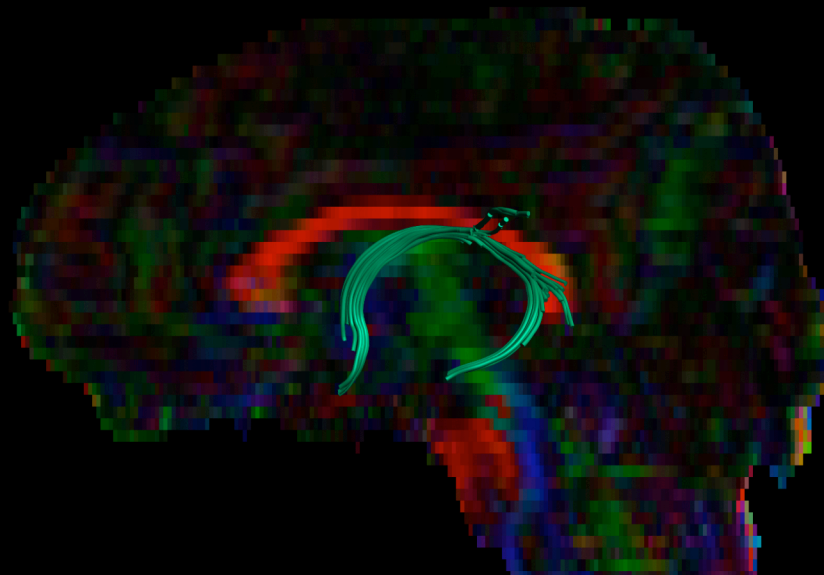
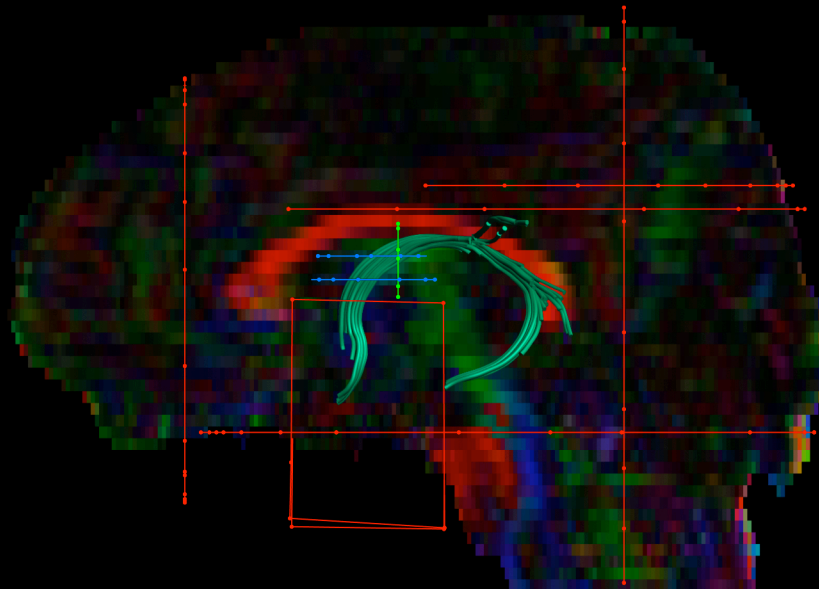


# Fornix



# Fornix

## Regions of Interest (ROI):

**RED** regions of interest: exclusion regions (fibres cannot pass through these regions).

**GREEN** regions of interest: inclusion regions (fibers must pass through these regions).

**BLUE** regions of interest: seed regions (act as an or, so fibers can go one or another seed region, but are not required to pass through both).

## Descriptions of ROIs:

\*Please note that these ROIs may need to be modified for different data sets, and are not displayed in a standardized space/template.

### Coronal ROIs:

1. **AND** ROI placed over the body of the fornix (green/pale blue bulb).
10. **NOT** ROI drawn anterior to the fornix.
11. **NOT** ROI drawn posterior to the fornix.

### Sagittal ROIs:

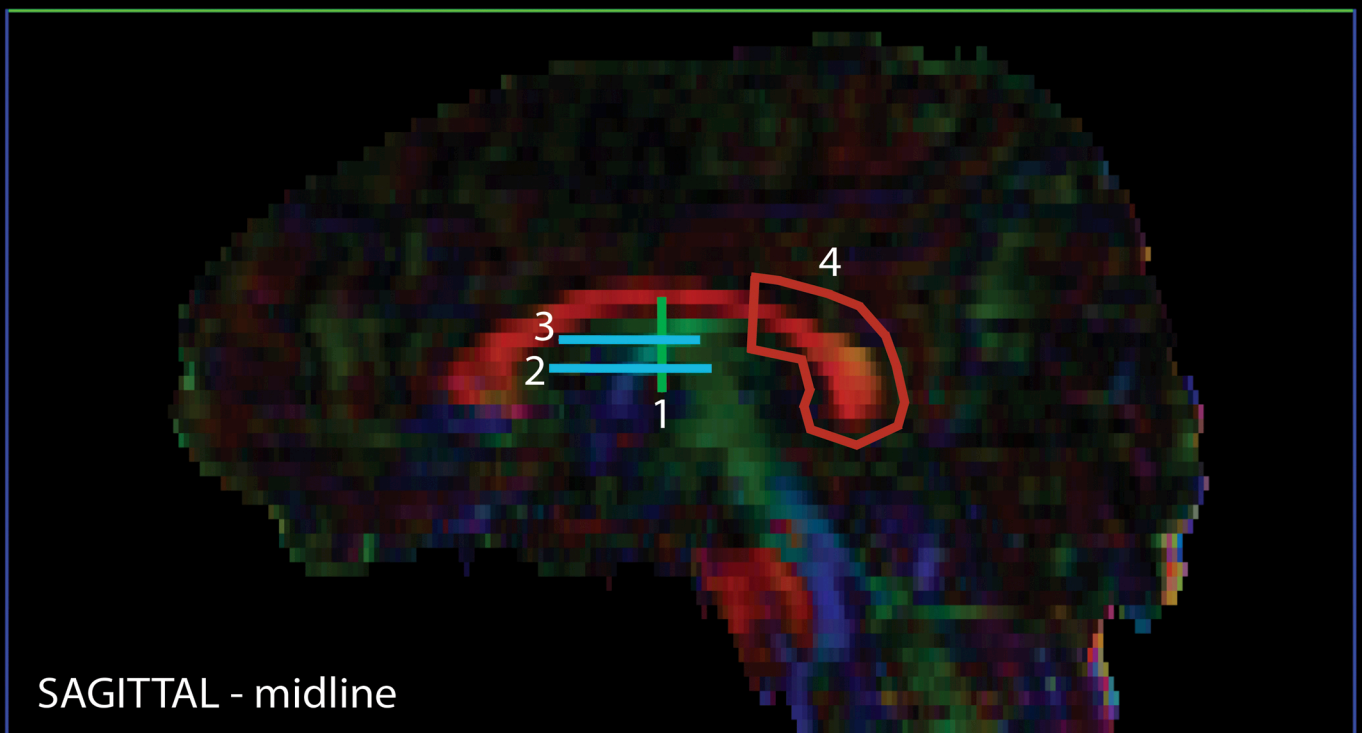
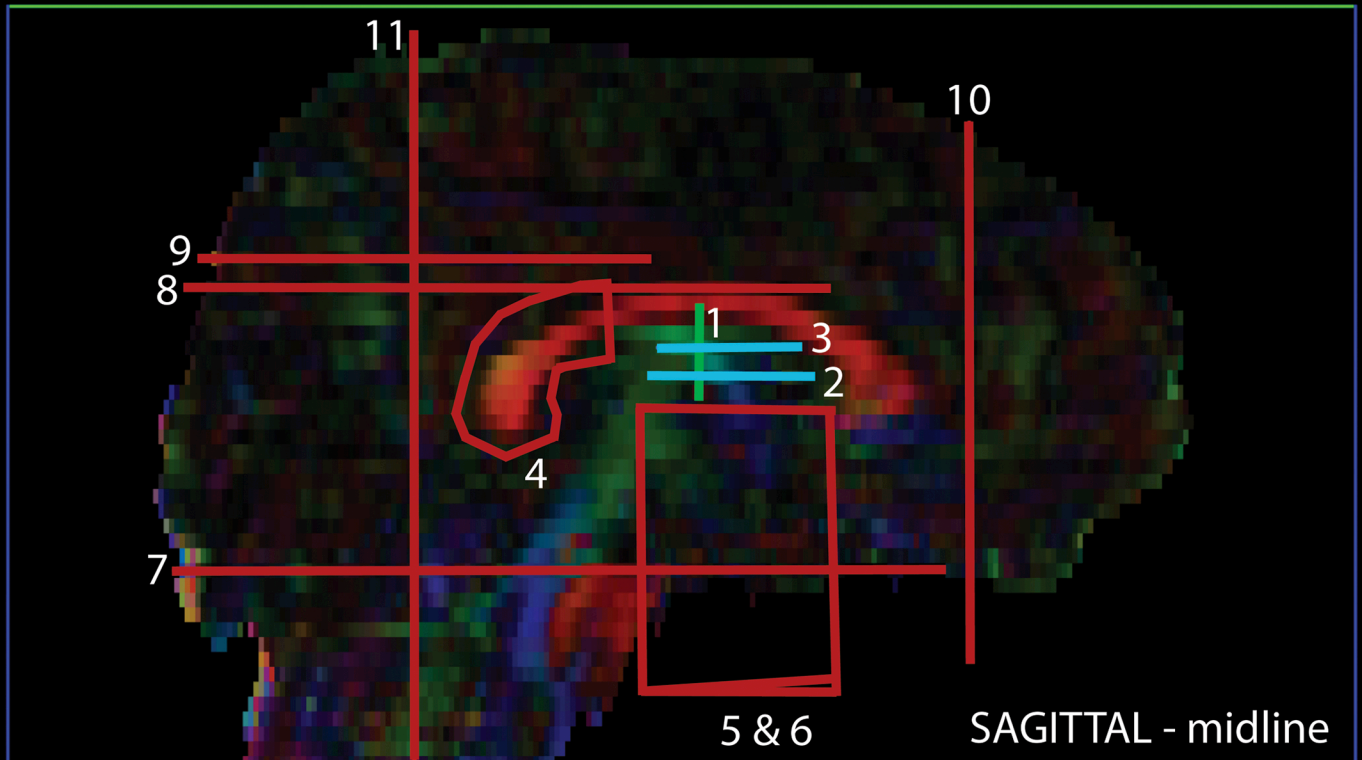
4. **NOT** ROI drawn over the splenium segment of the corpus callosum to prevent fibers crossing the midline.
  5. **NOT** ROI lateral to the column of the fornix.
  6. **NOT** ROI lateral to the column of the fornix.
- \* NOT ROIs 5 & 6 prevent tracts passing through the anterior commissure

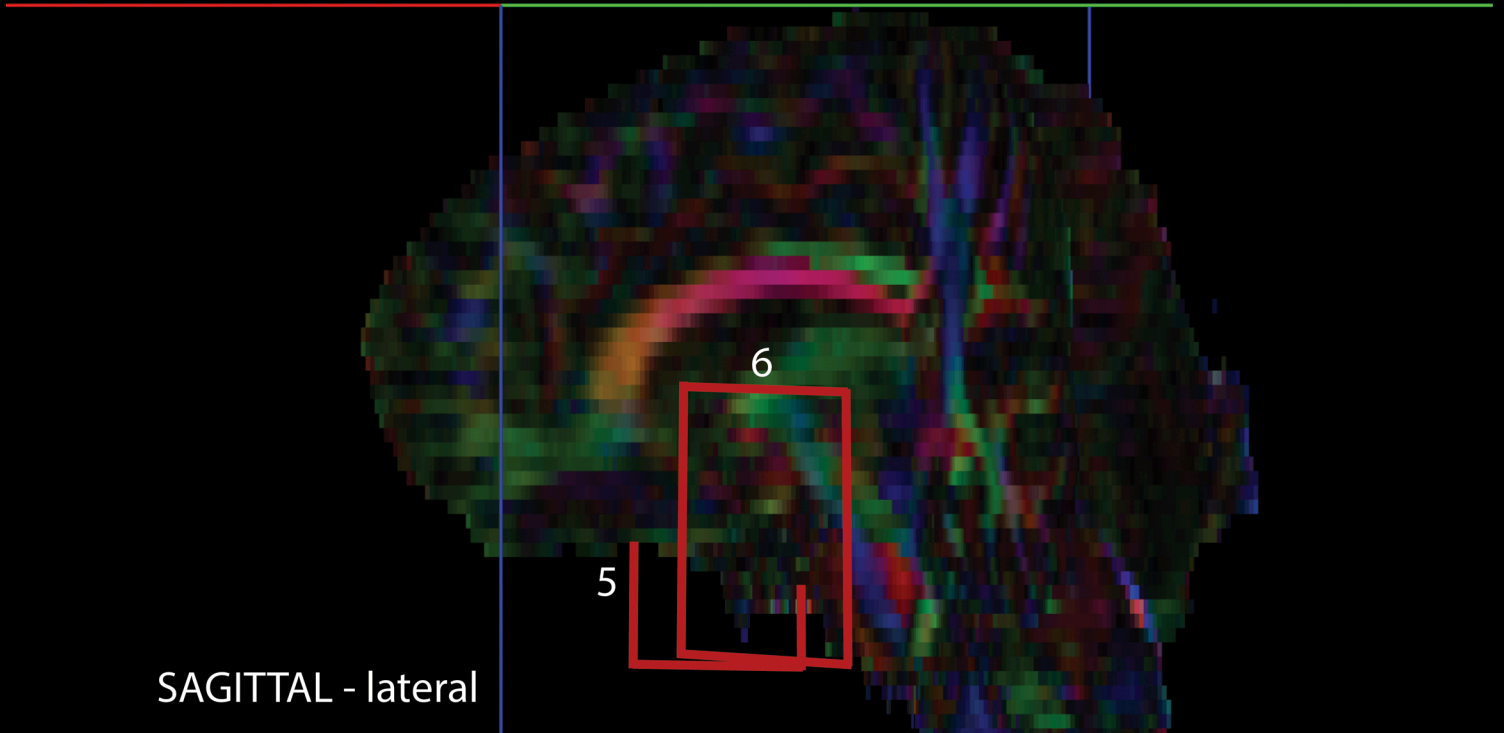
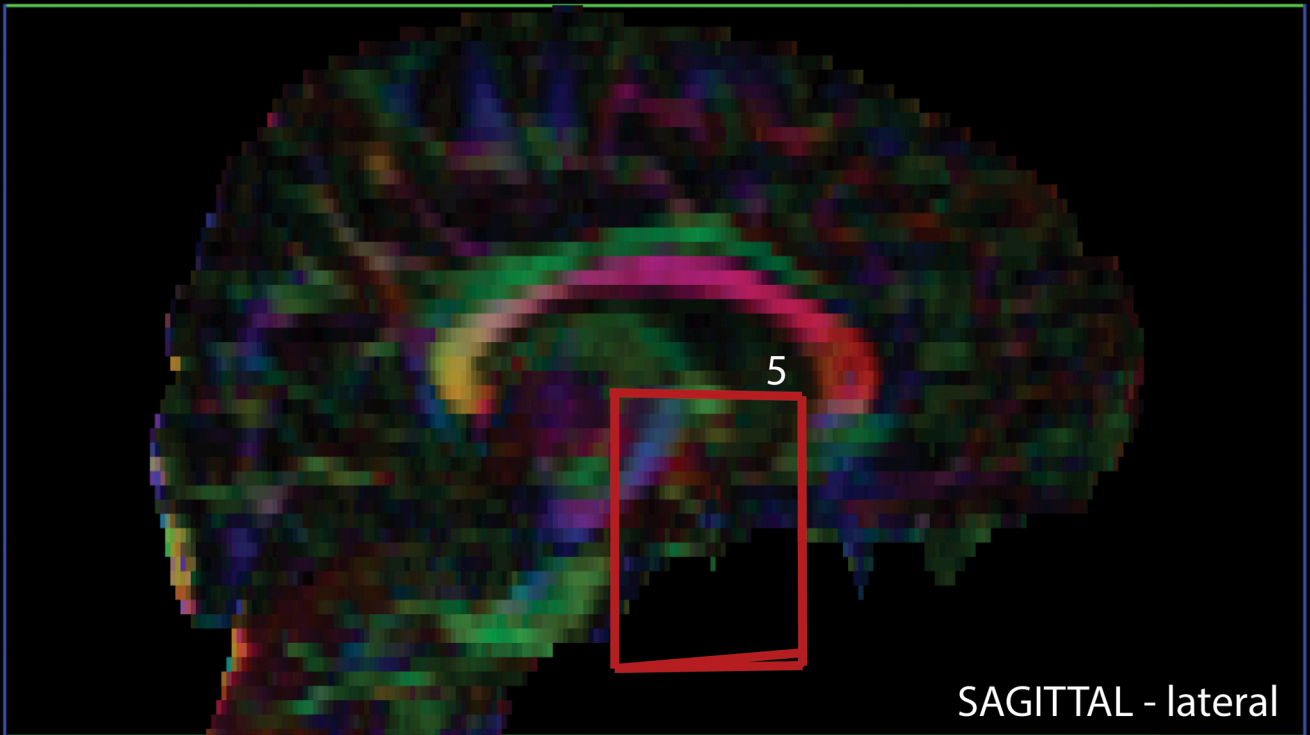
### Axial ROIs:

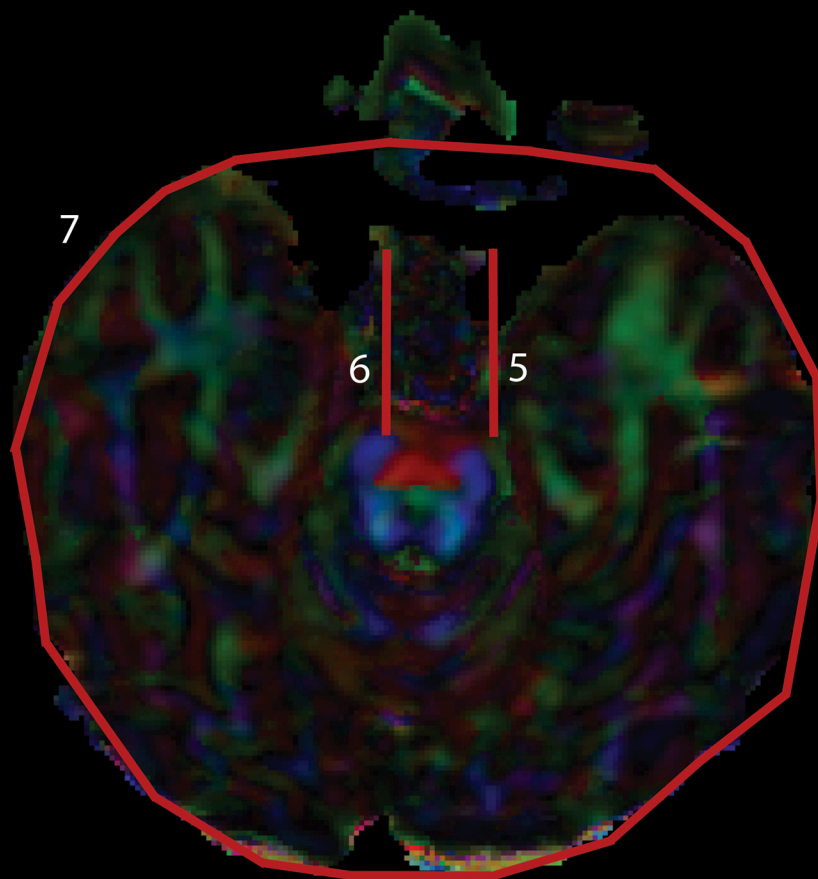
2. **SEED** ROI placed over the column of the fornix.
3. **SEED** ROI placed over the column of the fornix.
7. **NOT** ROI drawn below the fornix, covering a whole slice around the level of the decussation of the cerebral peduncles.
8. **NOT** ROI drawn above the fornix.
9. **NOT** ROI drawn above the fornix.



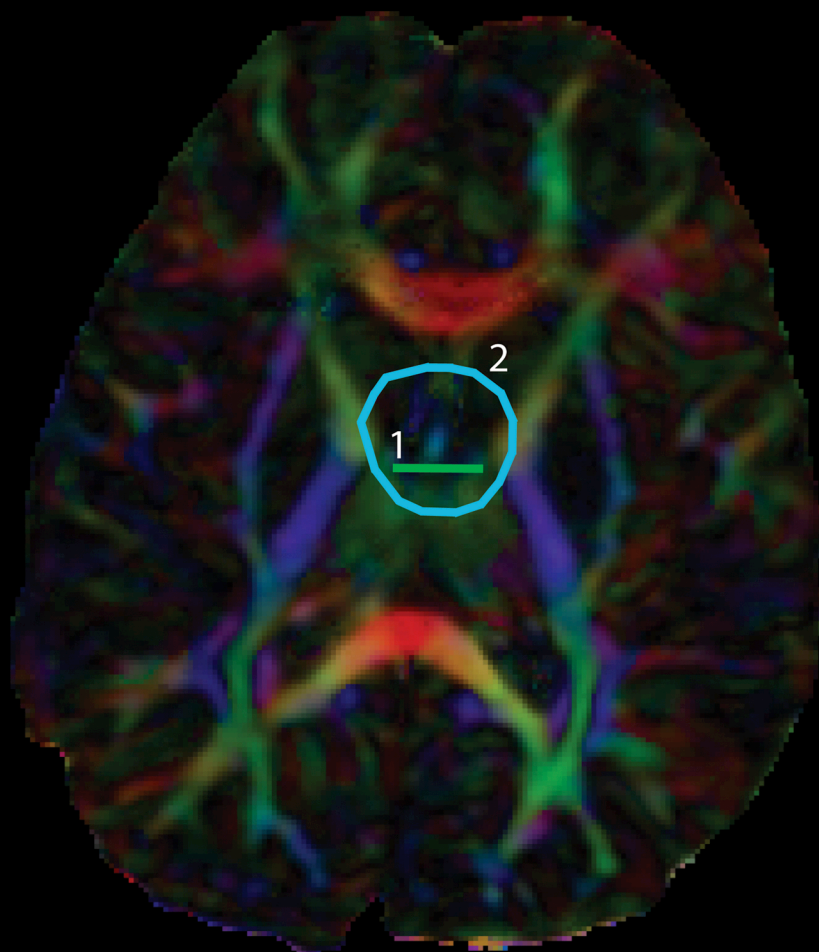
# Fornix



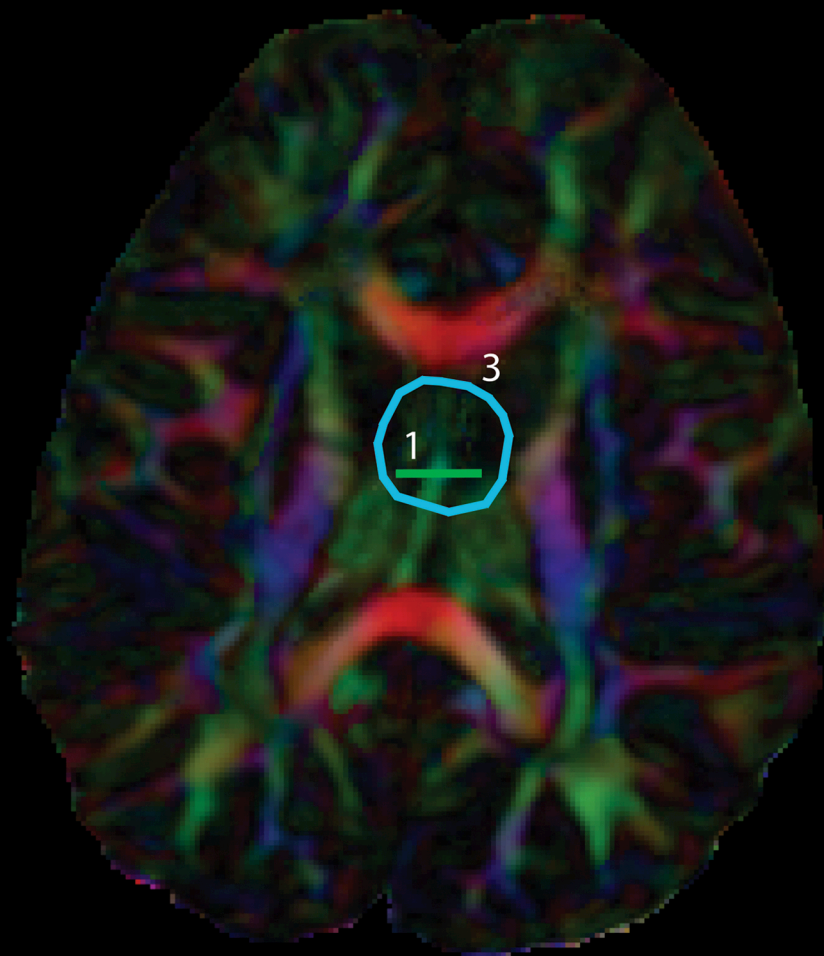




AXIAL - caudal

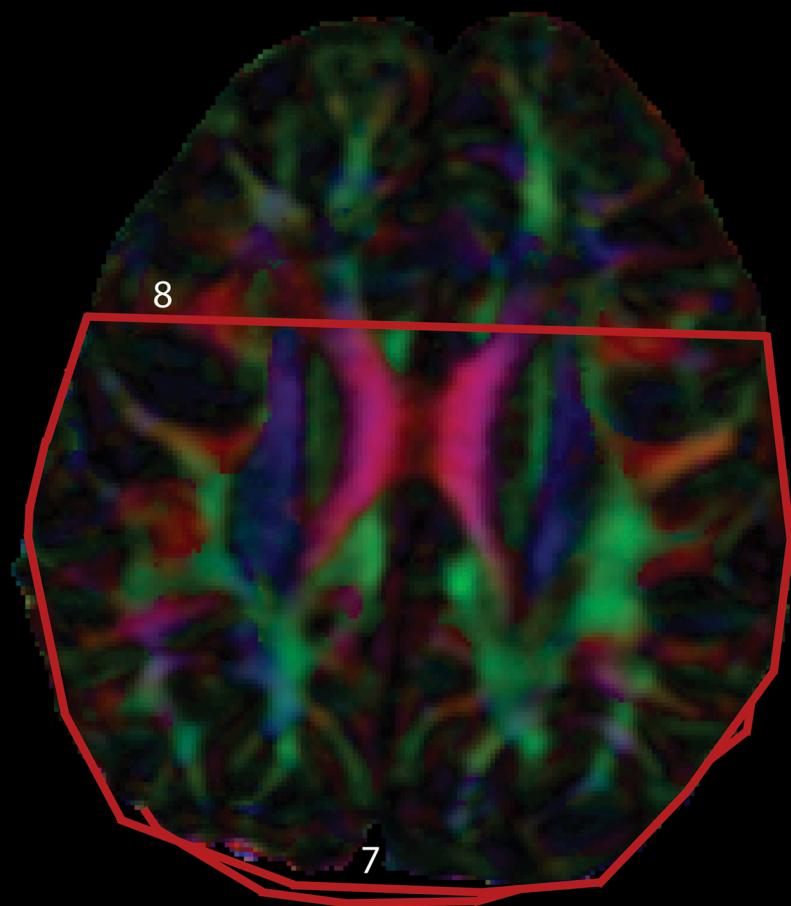


AXIAL - midline

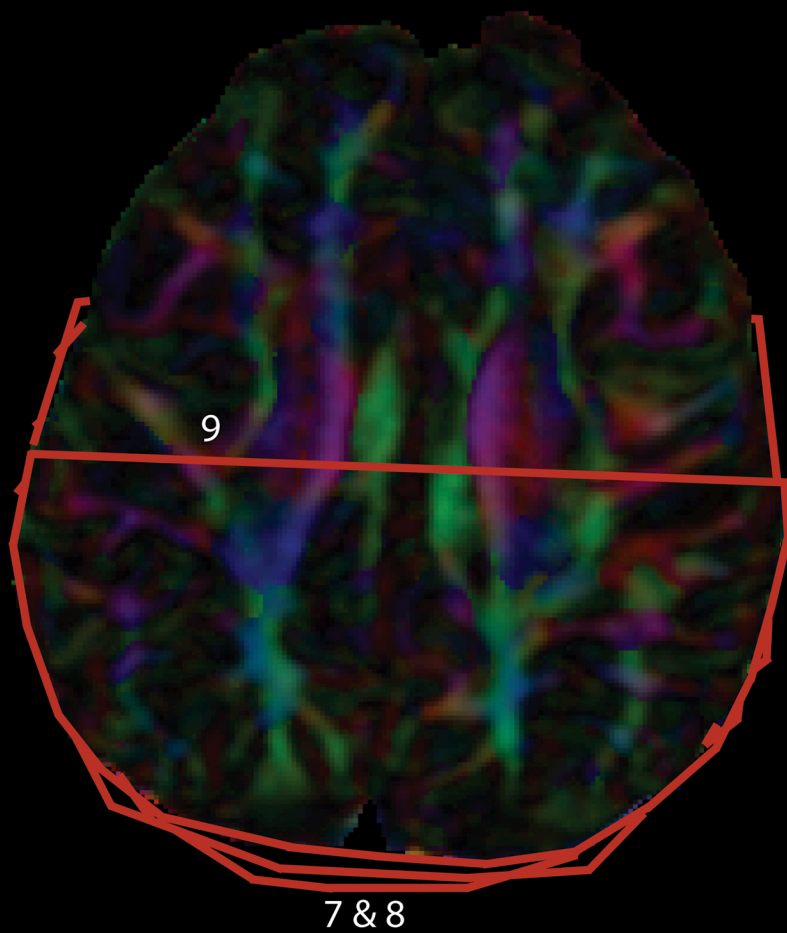


AXIAL - cranial

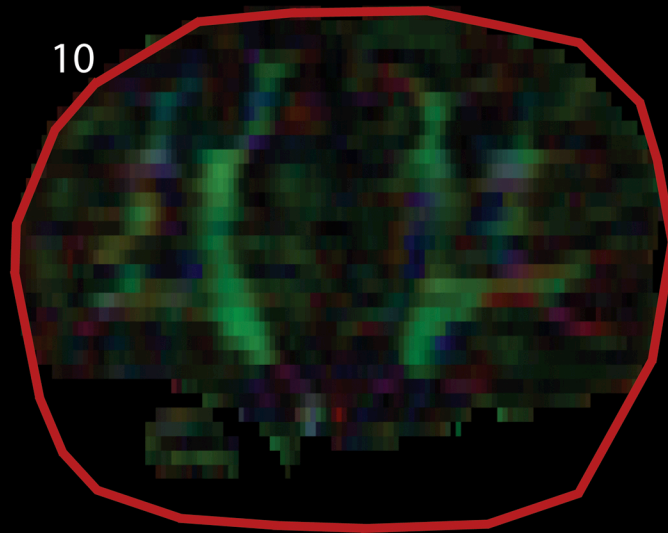




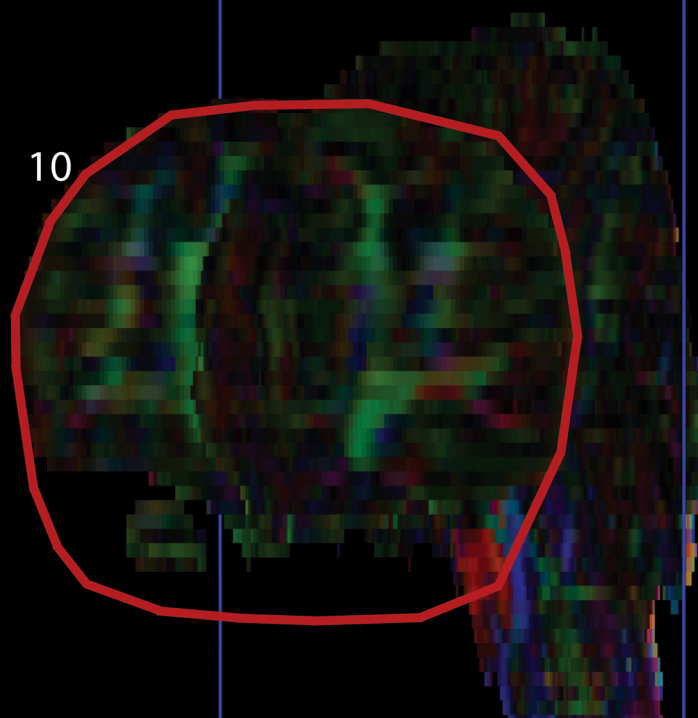
AXIAL - cranial



AXIAL - cranial

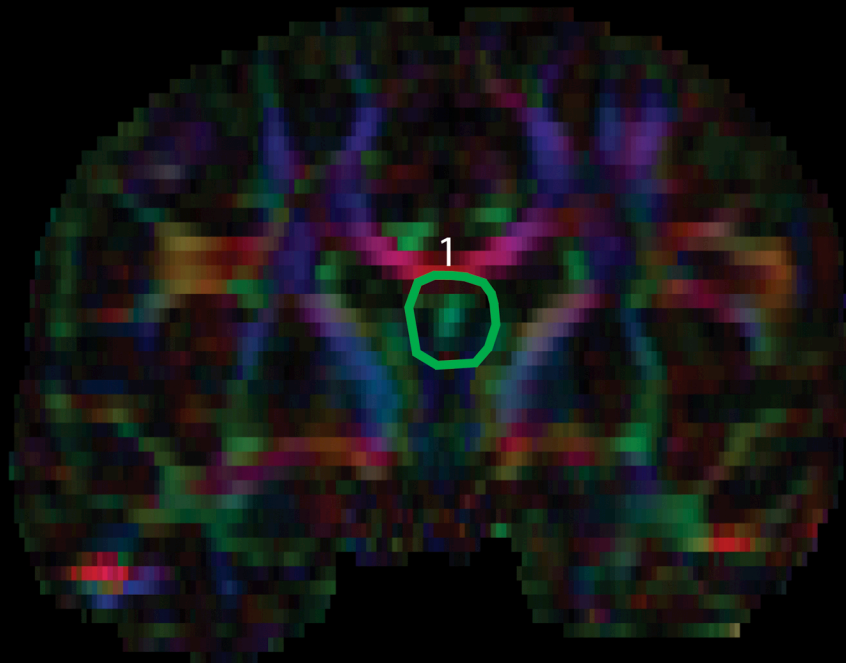


CORONAL - anterior

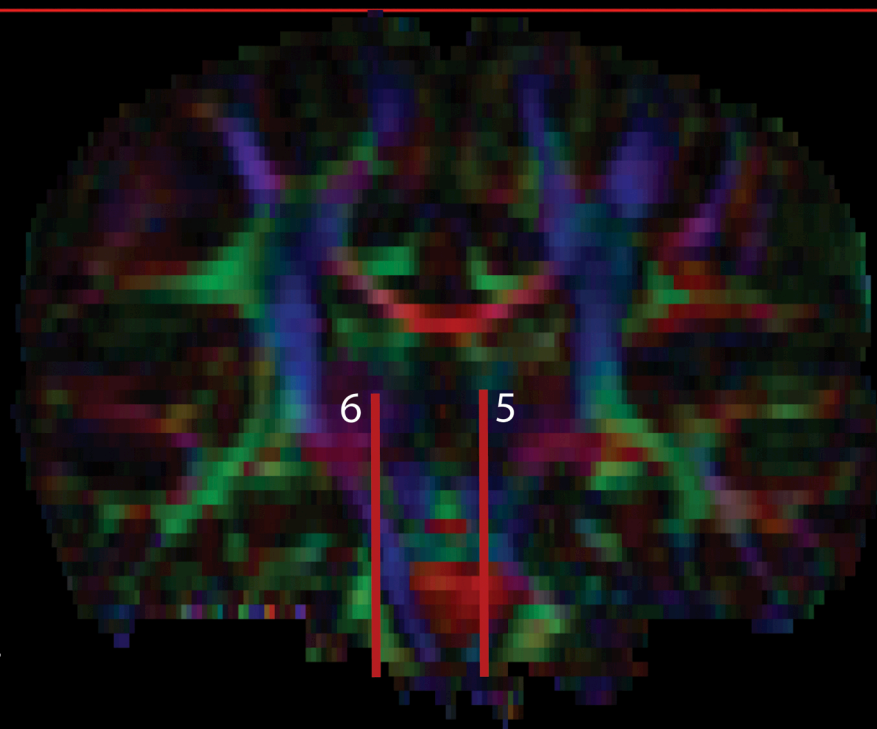


CORONAL - anterior  
SAGITTAL





CORONAL -  
midline



CORONAL -  
posterior

