



Implementing a Data Sharing Policy

Figshare Webinar on: Ensuring your data policies are up to date and cover the FAIR principles

Caroline Sutton,
Director of Open Research

11 July 2019

Taylor & Francis Data Sharing Policies



	Basic	Share upon reasonable request	Publicly available	Open data	Open and fully FAIR
Level of data sharing	Authors are encouraged to share or make open the data associated with the paper, where this does not violate the protection of human subjects or other valid privacy concerns.	Authors publishing with the journal agree to make their data available upon reasonable request. It's up to the author to determine whether a request is reasonable.	Authors make their data freely available to the public, but under a license that limits re-use, or under unclear re-use conditions.	Authors must make their data freely available to the public, under a license allowing re-use by any third party for any lawful purpose. Data shall be findable and fully accessible.	Authors must make their data freely available to the public, under a license allowing re-use by any third party for any lawful purpose. Additionally, data shall meet with FAIR standards as established in the relevant subject area.
Data availability statement	Highly encouraged	Mandatory	Mandatory	Mandatory	Mandatory
Data citation	Highly encouraged	Highly encouraged	Highly encouraged	Mandatory	Mandatory
Persistent identifier for data	Highly encouraged	Highly encouraged	Highly encouraged	Mandatory	Mandatory
License applied to data set	Author's choice	Author's choice	Author's choice	CC0, CCBY or equivalent	CCBY, CC0 or equivalent





- Research & Draft Policies
- Review internally and with selected editors and societies
- Sense check the policies with researchers and colleagues; Sense check our knowledge of data sharing in different subject areas; Sense check how policies would work in different geographic locations
 - Internal capacity-building,
 - Comms, webinars, sessions
 - Tools & resources for guiding discussions





- Creation of Cross-departmental project group
 - Production, Global Peer Review, Editorial, Marketing, Communications, and identified a lead with strong operational knowledge
 - Review current workflows and new workflows (publisher and author)
 - Submission system scripting and integration
 - IFAs (different for different policies), template DAS, etc. (how to structure info, and where to place it)
 - Instructions/process documentation to editorial offices
 - Instructions to typesetters (e.g. placement of DAS, data citations, etc)
 - Instructions to peer reviewers
 - Integration with data repositories? (e.g. Figshare, Dryad, etc.)
 - Analyse portfolio readiness
 - Master tracking sheet
 - Where are there existing policies? TOP guideline signatories?
 - Open Science badges
 - Where can we move quickly onto a policy? What are potential blockers?
 - Which journals need to be put on hold
 - Design roll-out strategy





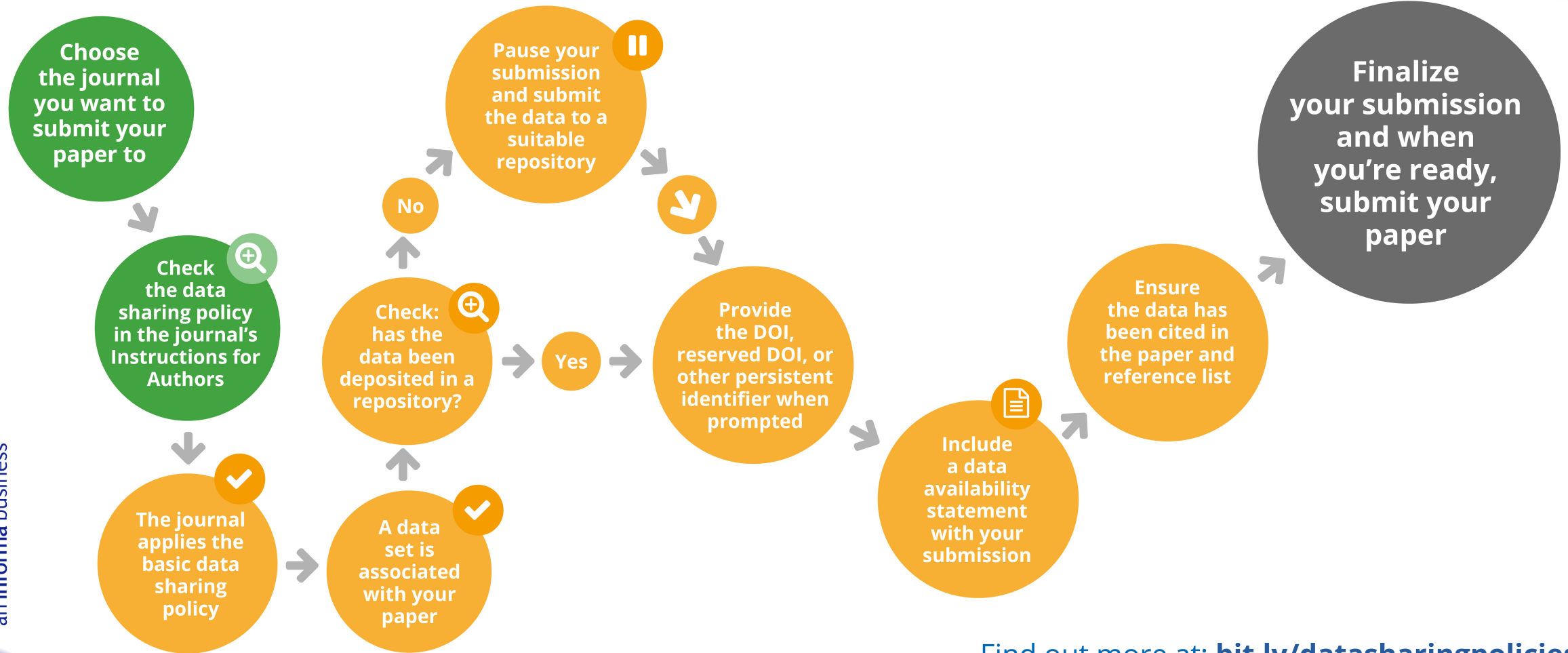
- Communications!
 - Editors
 - Societies
 - Editorial Boards
 - Author resources (templates, repository list, links, further reading, explanations, and more)
 - FAQs and updating of FAQs
 - Help desk/Inbox
- Implementing in batches of journals
 - New IFAs
 - New routines implemented
 - “Turn on” functionality in the submission system



Understanding the basic data sharing policy



- ✓ Submitting your article to a Taylor & Francis, Routledge or Cogent OA journal
- ✓ A data set is associated with your paper



Find out more at: bit.ly/datasharingpolicies



Support for researchers



AUTHORSERVICES

Supporting Taylor & Francis authors

Choosing a journal Writing your paper

Home Making your submission Understanding peer review

Understanding



Click to view infographic

- Sharing data p

AUTHORSERVICES

Supporting Taylor & Francis authors

Choosing a journal Writing your paper Making your submission Understanding peer review

Uncategorised Data sharing F

Data sharing F

Are you submitting your pa
associated with your work?
Francis, and find answers to

What is a data availability

These statements provide i
directly supporting the pub
data more findable and dis

You can find template data

Where can I deposit data?

Authors can choose from a
deposit your data, we've pr

What data should be share

The minimum data set is th
With the **basic policy**, it's up
shared. Some authors might
manipulated sub-set of the

Data Sharing Policy

This journal applies the Taylor & Francis Basic Data Sharing Policy. Authors are encouraged to share or make open the data supporting the results or analyses presented in their paper where this does not violate the protection of human subjects or other valid privacy or security concerns.

Authors are encouraged to deposit the dataset(s) in a recognized data repository that can mint a persistent digital identifier, preferably a digital object identifier (DOI) and recognizes a long-term preservation plan. If you are uncertain about where to deposit your data, please see [this information](#) regarding repositories.

Authors are further encouraged to cite any data sets referenced in the article and provide a Data Availability Statement.

At the point of submission, you will be asked if there is a data set associated with the paper. If you reply yes, you will be asked to provide the DOI, pre-registered DOI, hyperlink, or other persistent identifier associated with the data set(s). If you have selected to provide a pre-registered DOI, please be prepared to share the reviewer URL associated with your data deposit, upon request by reviewers.

Where one or multiple data sets are associated with a manuscript, these are not formally peer reviewed as a part of the journal submission process. It is the author's responsibility to ensure the soundness of data. Any errors in the data rest solely with the producers of the data set(s).



- Communications!
 - Editors
 - Societies
 - Editorial Boards
 - Author resources (templates, links, further reading, explanations, and more)
 - FAQs and updating of FAQs
 - Help desk/Inbox
- Implementing in batches of journals
 - New IFAs
 - New routines implemented
 - “Turn on” functionality in the submission system



- Working to move more journals to more progressive policies
- Journals on hold due to existing policies now merging policies
- Translation of author resources to additional languages
- Small adjustments to policies
- Integrating with TOP guidelines
- Ongoing monitoring of feedback, experiences, uptake
- DAS moved in front of Paywall on subscription titles
- Analysis of policies in light of HSS research workflows



THANK YOU!

Contact us: datasharing@tandf.co.uk

@CarolineSutton
Caroline.Sutton@informa.com