

glue

multidimensional data exploration

NSF CSSI PI Meeting Seattle, WA, Feb. 13-14, 2020

SI2-SSE: A Sustainable Future for the Glue Multi-Dimensional Linked Data Visualization

Alyssa Goodman (PI, Harvard)
Michelle Borkin (PI, Northeastern)
Thomas Robitaille (Lead Architect)
Catherine Zucker (Senior Personnel)



The **glue** project was founded in 2012, with funding from **NASA's James Webb Space Telescope (JWST)** project. NASA contracts continue to support development of JWST-related (Astronomy) functionality.

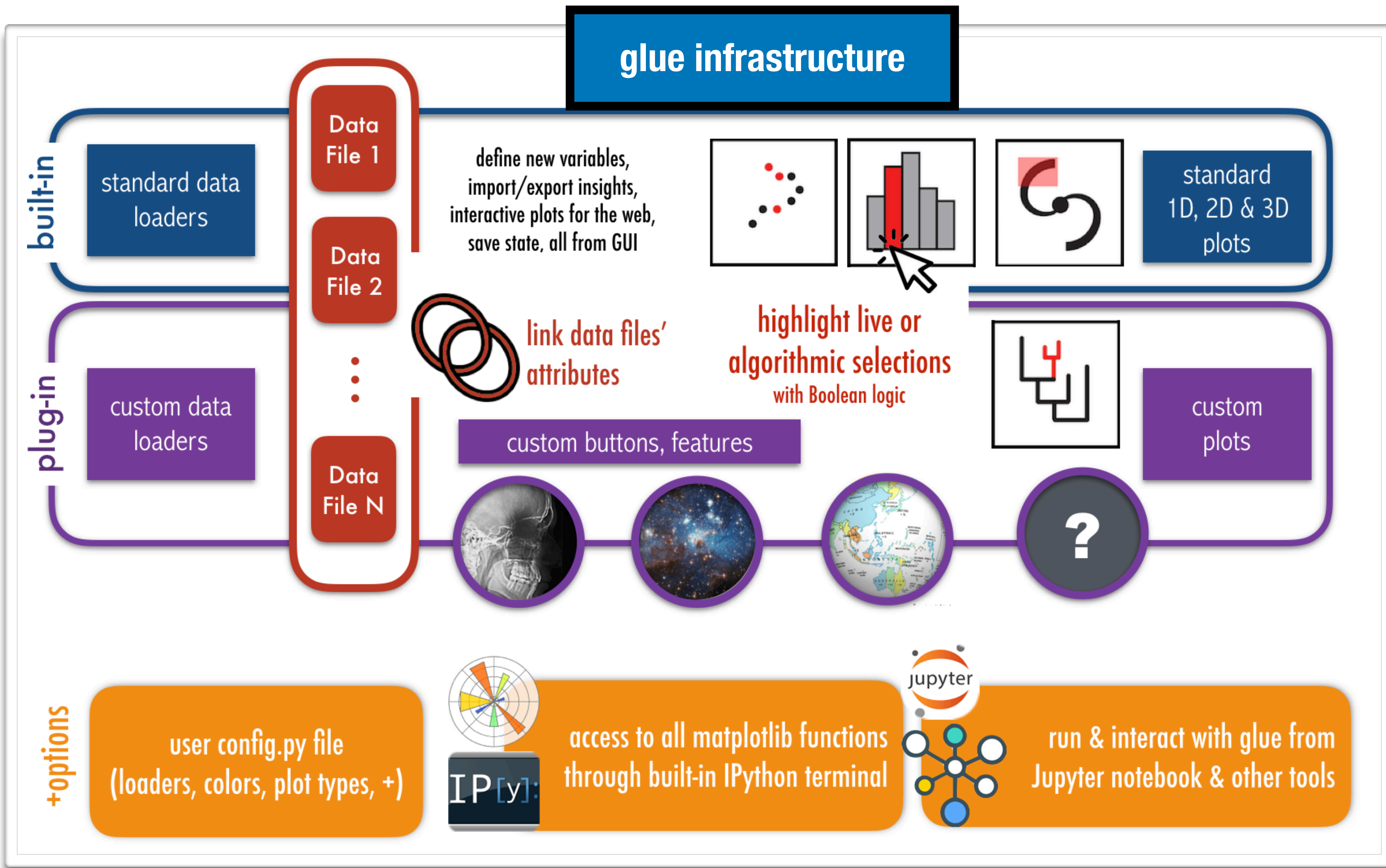


Beginning in 2017, glue has also been funded by the **National Science Foundation**, under *SI2-SSE: Collaborative Research: A Sustainable Future for the Glue Multi-Dimensional Linked Data Visualization Package* (Award #: 1739657). The goal of the NSF SSE funding is to expand glue's functionality into domains beyond its traditional strengths in Astronomy and Medicine, by broadening both its user and developer communities.
All glue code is Open Source, at github.com/glue-viz

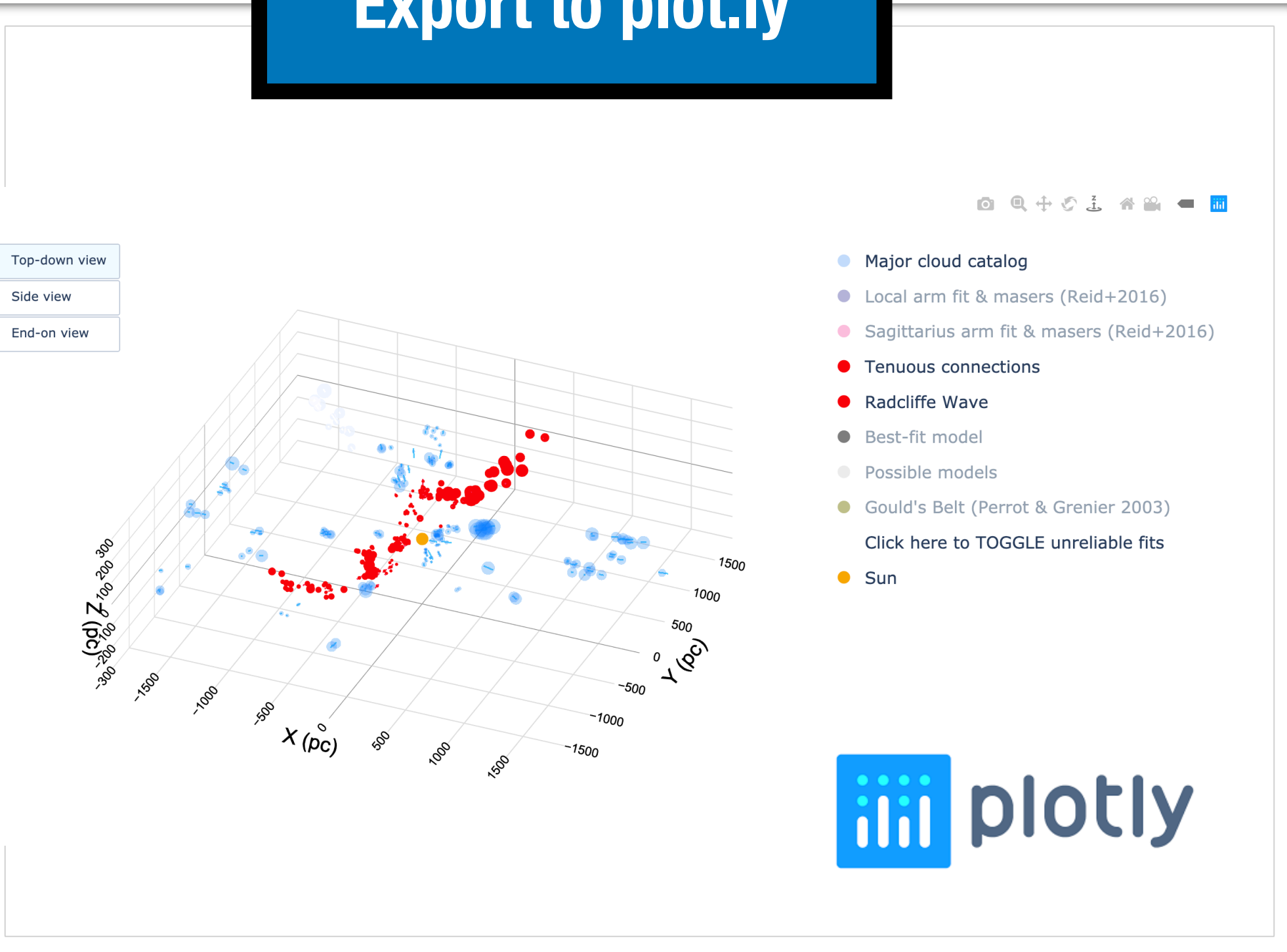
glueviz.org

github.com/glue-viz

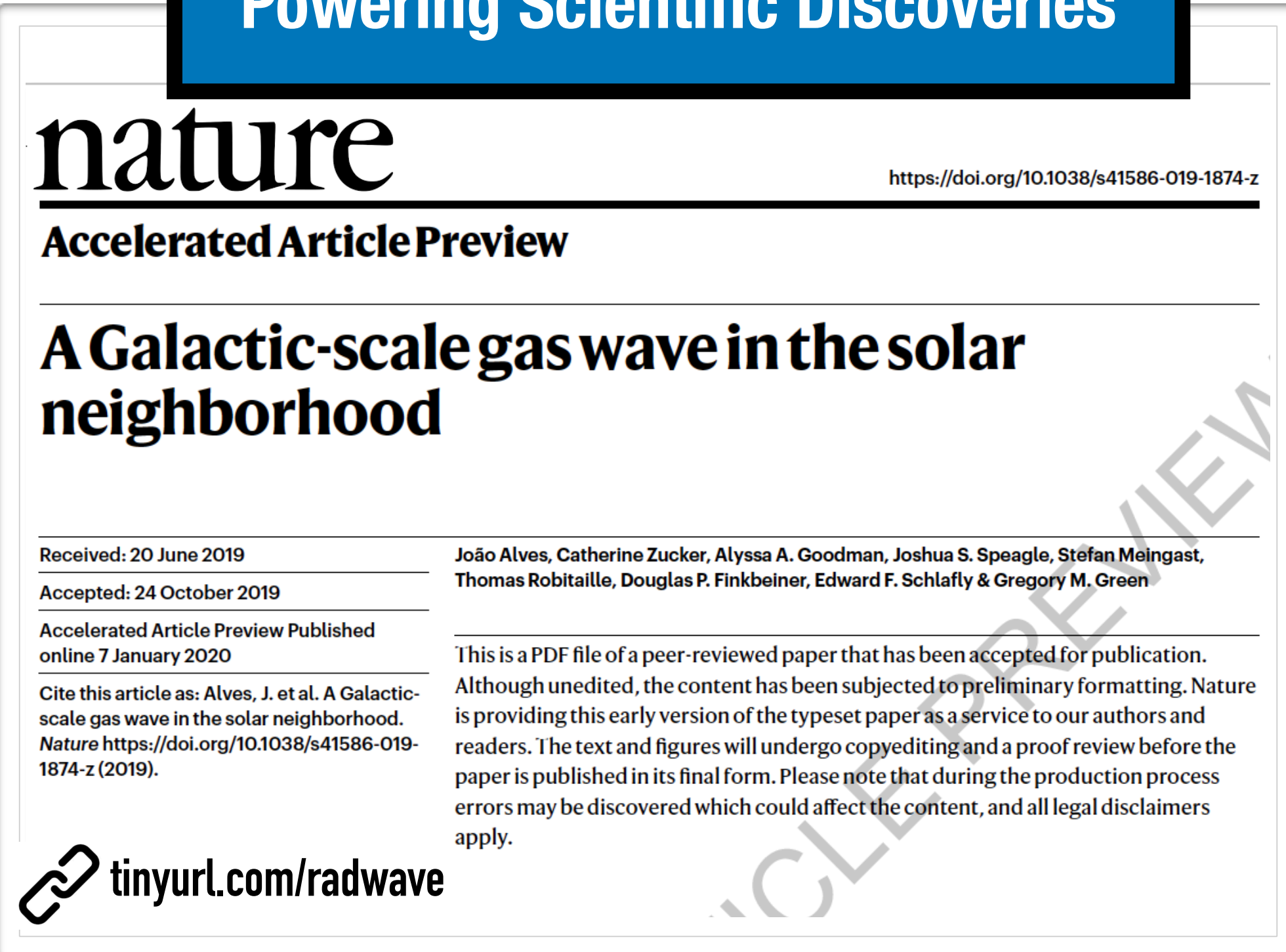
glueviz.slack.com



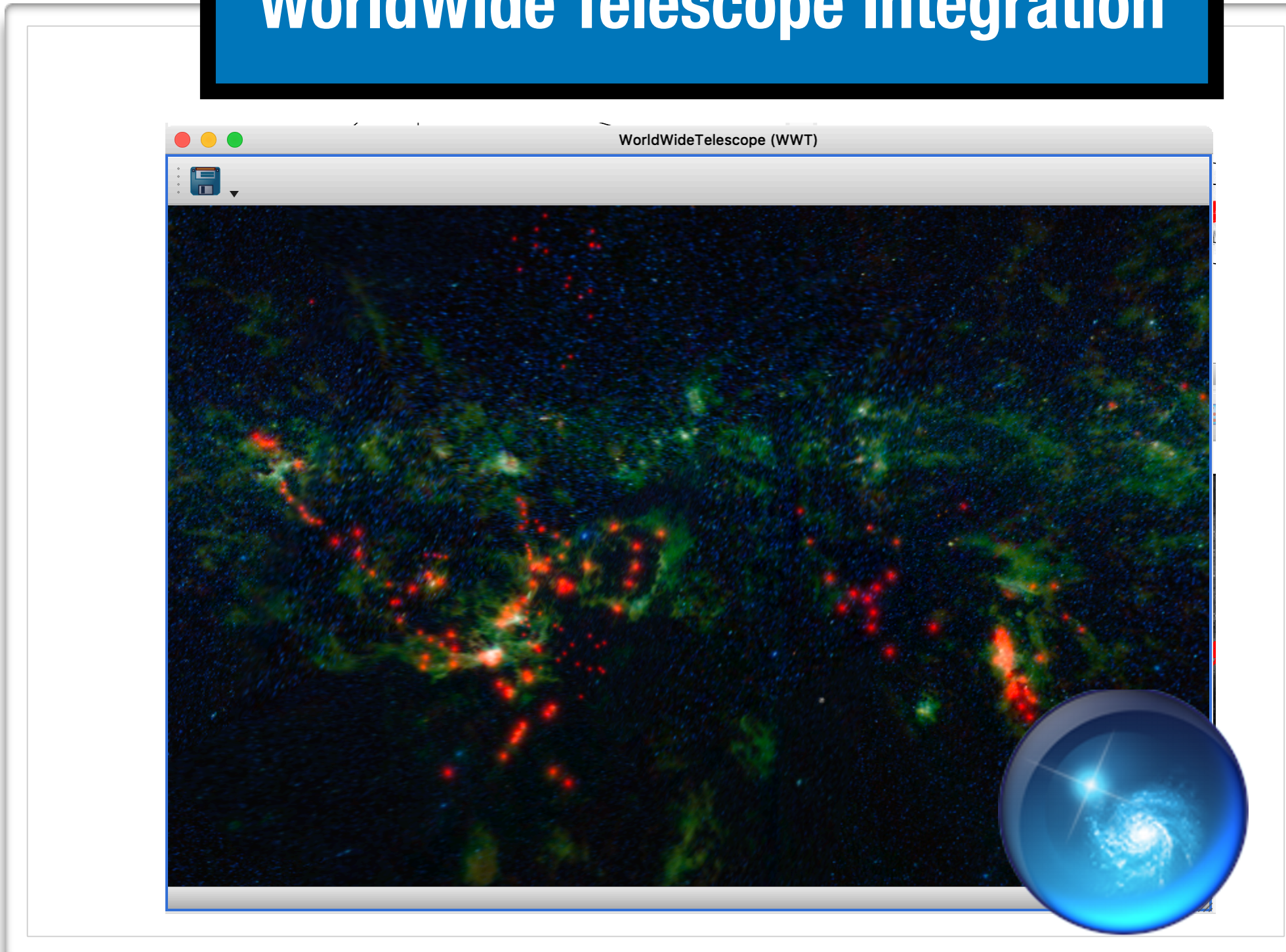
Export to plot.ly



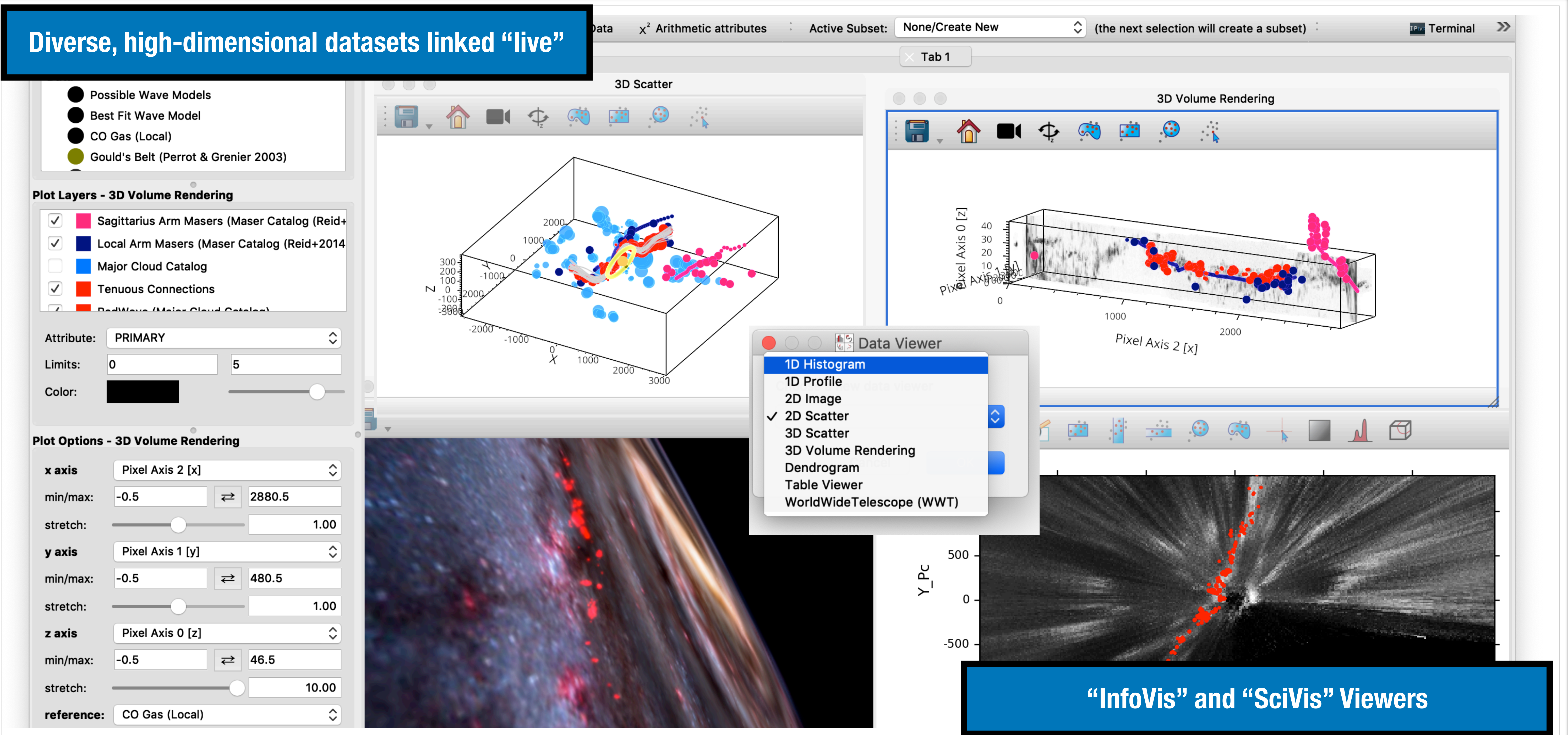
Powering Scientific Discoveries



WorldWide Telescope Integration



Diverse, high-dimensional datasets linked "live"

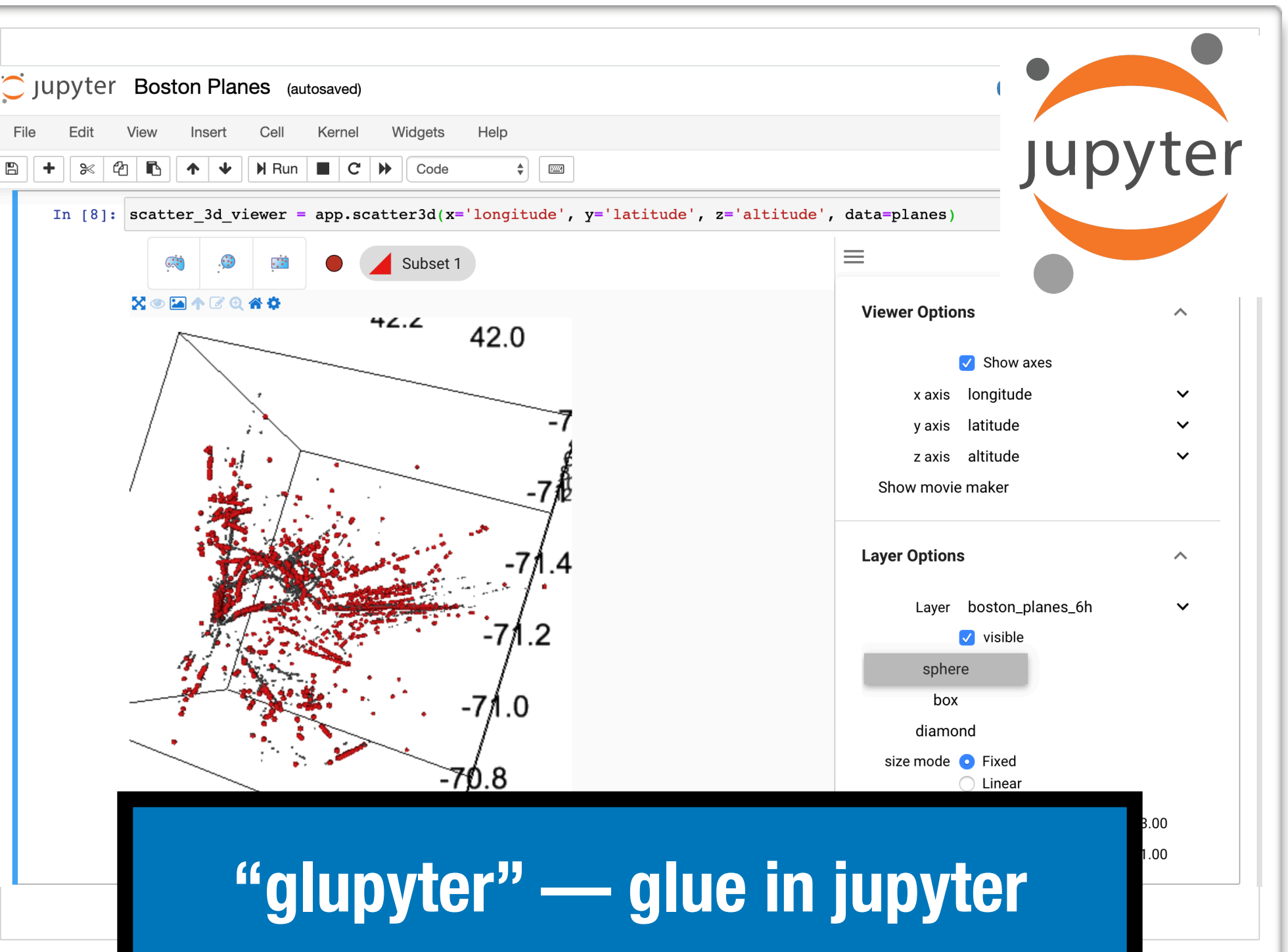


"InfoVis" and "SciVis" Viewers

GIS-Enabled



"glupyter" — glue in jupyter



Remote Data Access

