

## SUPPLEMENTARY MATERIAL

### A new steroidal glycoside from *Corypha taliera* Roxb., a globally endangered species

Mohammad Shoeb<sup>a\*</sup>, Moniruzzaman Khondker<sup>b</sup> and Nilufar Nahar<sup>a</sup>

<sup>a</sup>Department of Chemistry, University of Dhaka, Dhaka-1000, Bangladesh

<sup>b</sup>Department of Botany, University of Dhaka, Daka-1000, Bangladesh

**Abstract:** The reversed-phased HPLC analysis of the methanol extract of the pericarp of *Corypha taliera* Roxb (Talipalm), a rare species of Arecaceae family, afforded a new steroidal glycoside,  $\beta$ -sitosterol-3-*O*- $\alpha$ -L-rhamnopyranosyl-(1 $\rightarrow$ 4)- $\beta$ -D-xylopyranosyl-(1 $\rightarrow$ 4)- $\beta$ -D-glucopyranosyl-(1 $\rightarrow$ 4)- $\beta$ -D-glucopyranoside (**1**). The structure of the compound was elucidated unequivocally by UV, IR, HR-ESIMS, <sup>1</sup>H and <sup>13</sup>C NMR spectroscopic studies.

**Keywords:** *Corypha taliera*; beta-sitosterol; steroid; HPLC; rhamnose; glucoside

## List of Supplemental Material

- ◆ Figure S1.  $^1\text{H}$ -NMR Spectrum of Compound **1** (page 3).
- ◆ Figure S2.  $^{13}\text{C}$  NMR and DEPT Spectra of Compound **1** (page 4).
- ◆ Figure S3. HSQC Spectrum of Compound **1** (page 5).
- ◆ Figure S4. COSY Spectrum of Compound **1** (page 6).
- ◆ Figure S5. HMBC Spectrum of Compound **1** (page 7).
- ◆ Figure S6. 1D-TOCSY Spectrum of Compound **1** (page 8).
- ◆ Figure S7. 2D-TOCSY Spectrum of Compound **1** (page 9).
- ◆ Figure S8. HR-ESIMS Spectrum of Compound **1** (page 10).

Figure S1.  $^1\text{H}$ -NMR Spectrum of Compound **1**

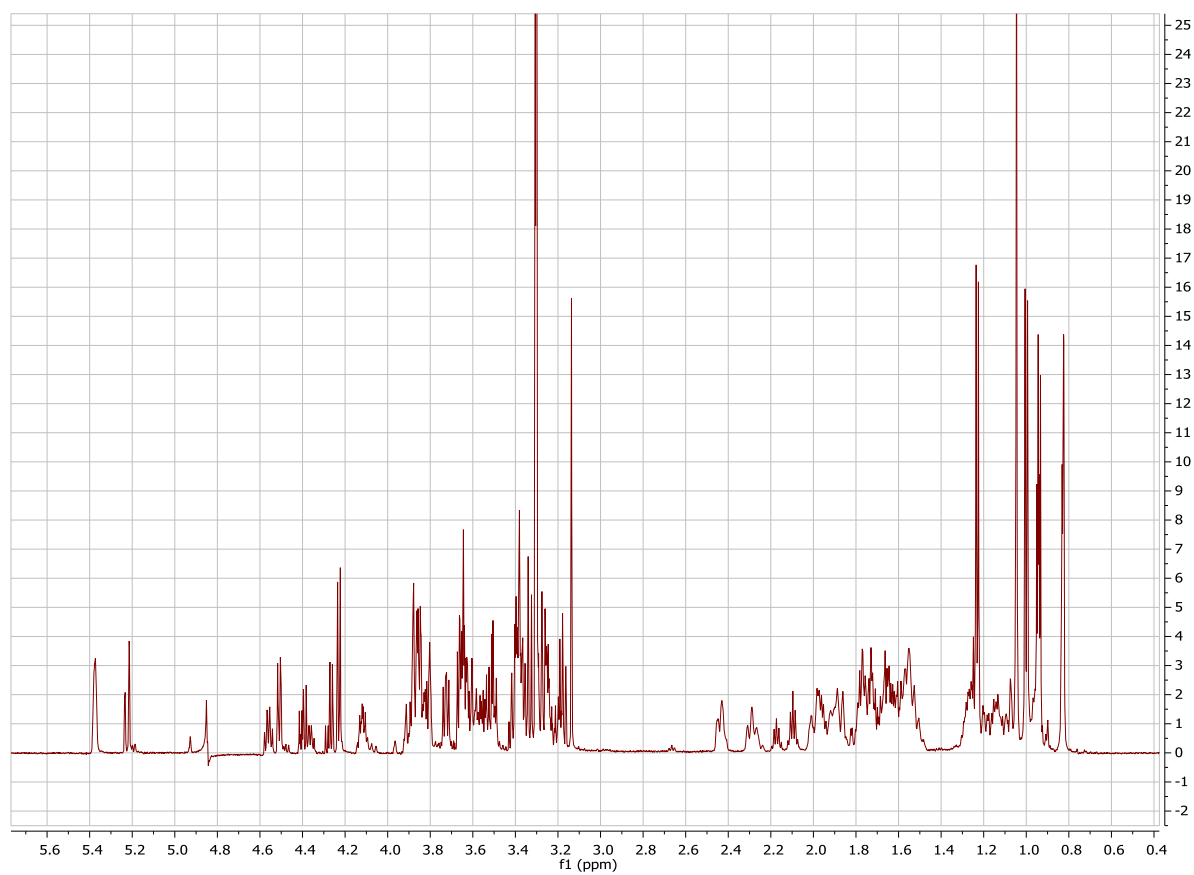


Figure S2.  $^{13}\text{C}$  NMR and DEPT Spectra of Compound **1**

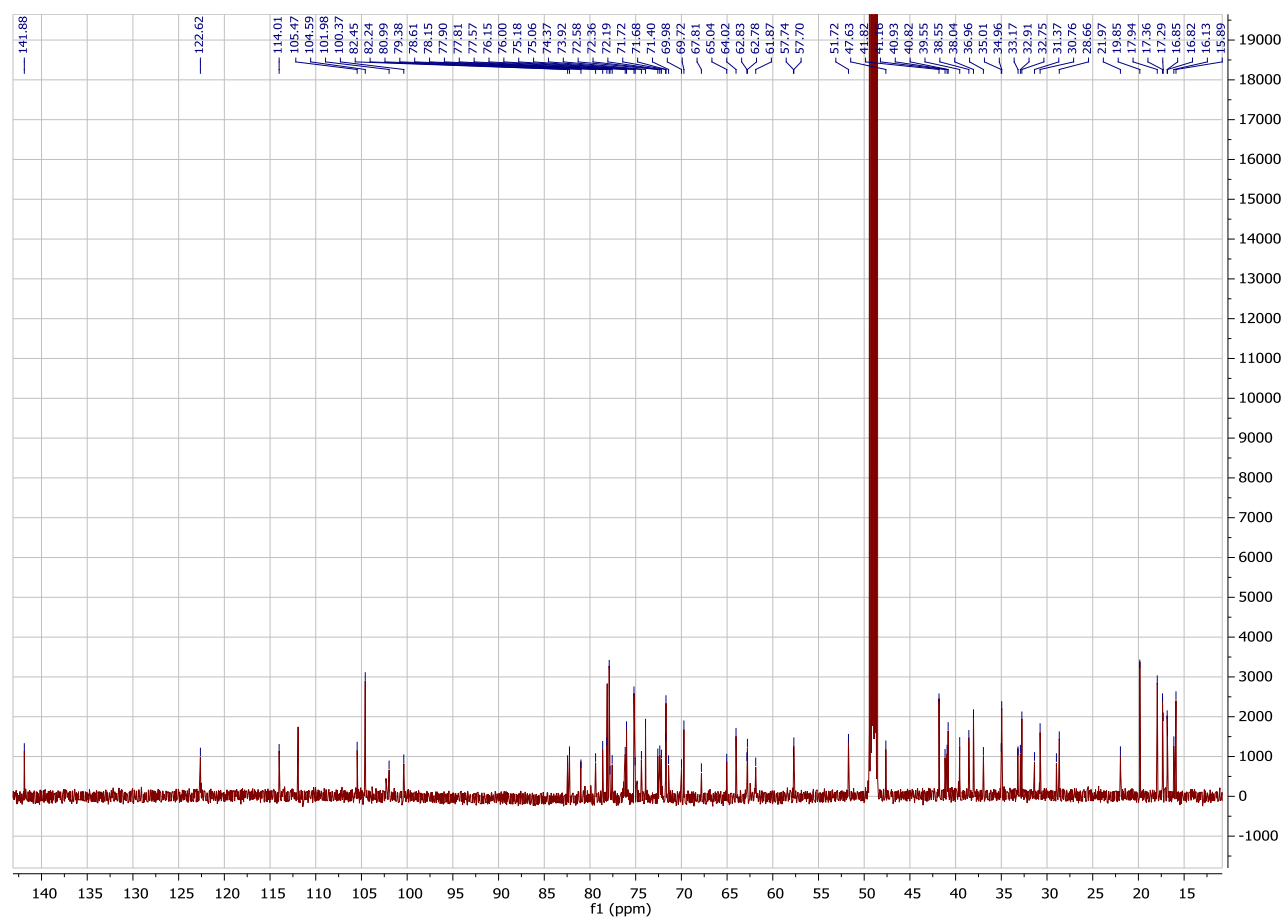


Figure S3. HSQC Spectrum of Compound **1**

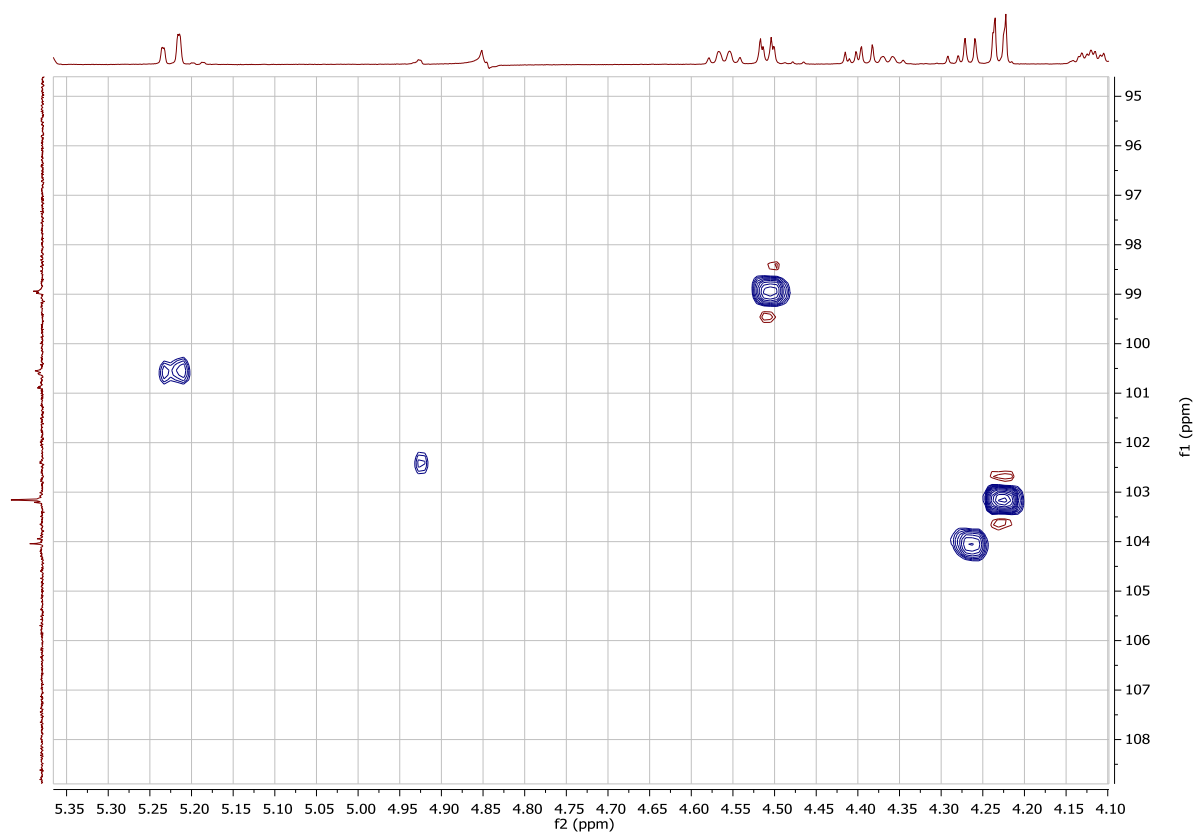


Figure S4. COSY Spectrum of Compound **1** (page 5)

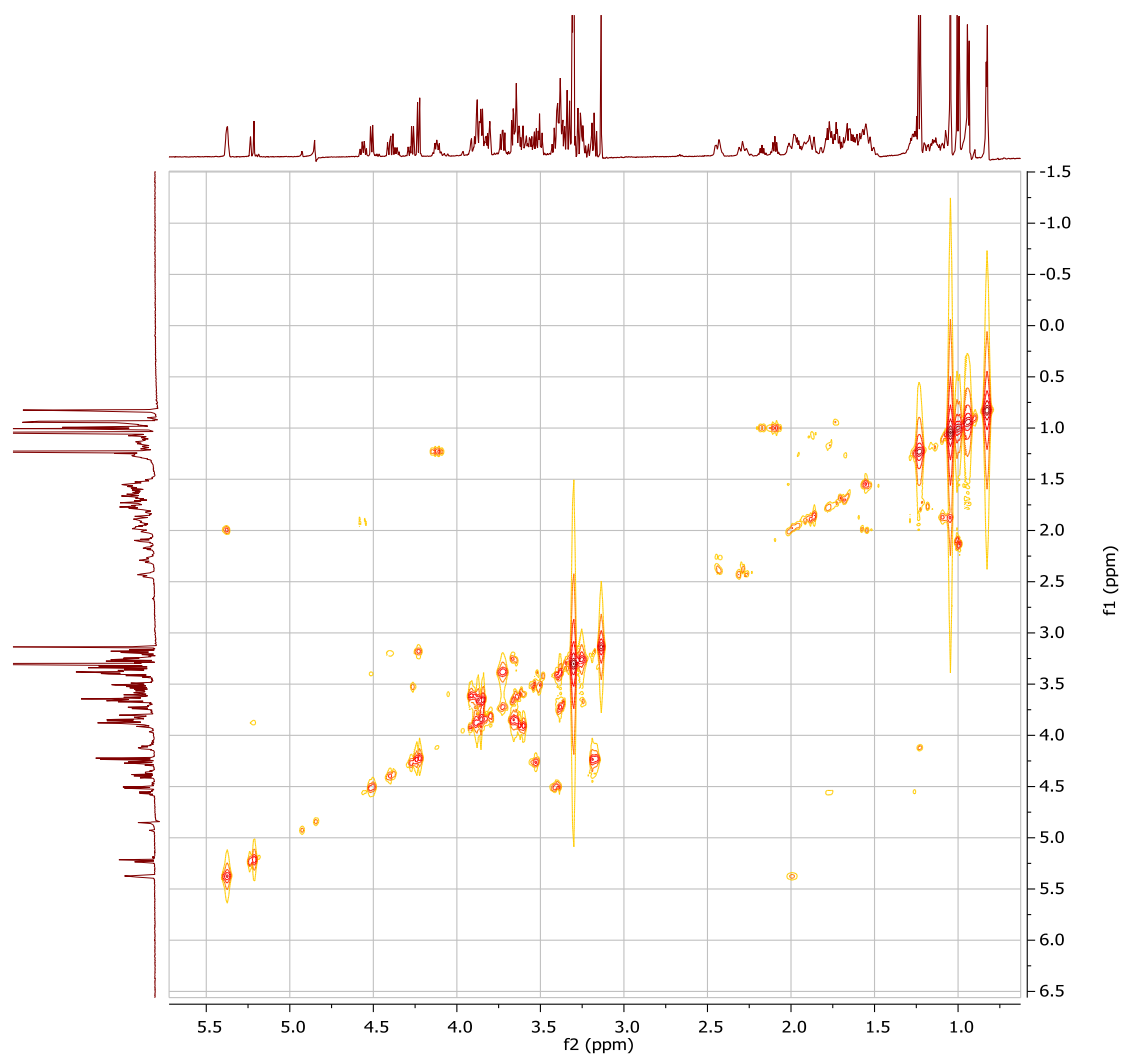


Figure S5. HMBC Spectrum of Compound **1**



Figure S6. 1D TOCSY Spectrum of Compound **1**

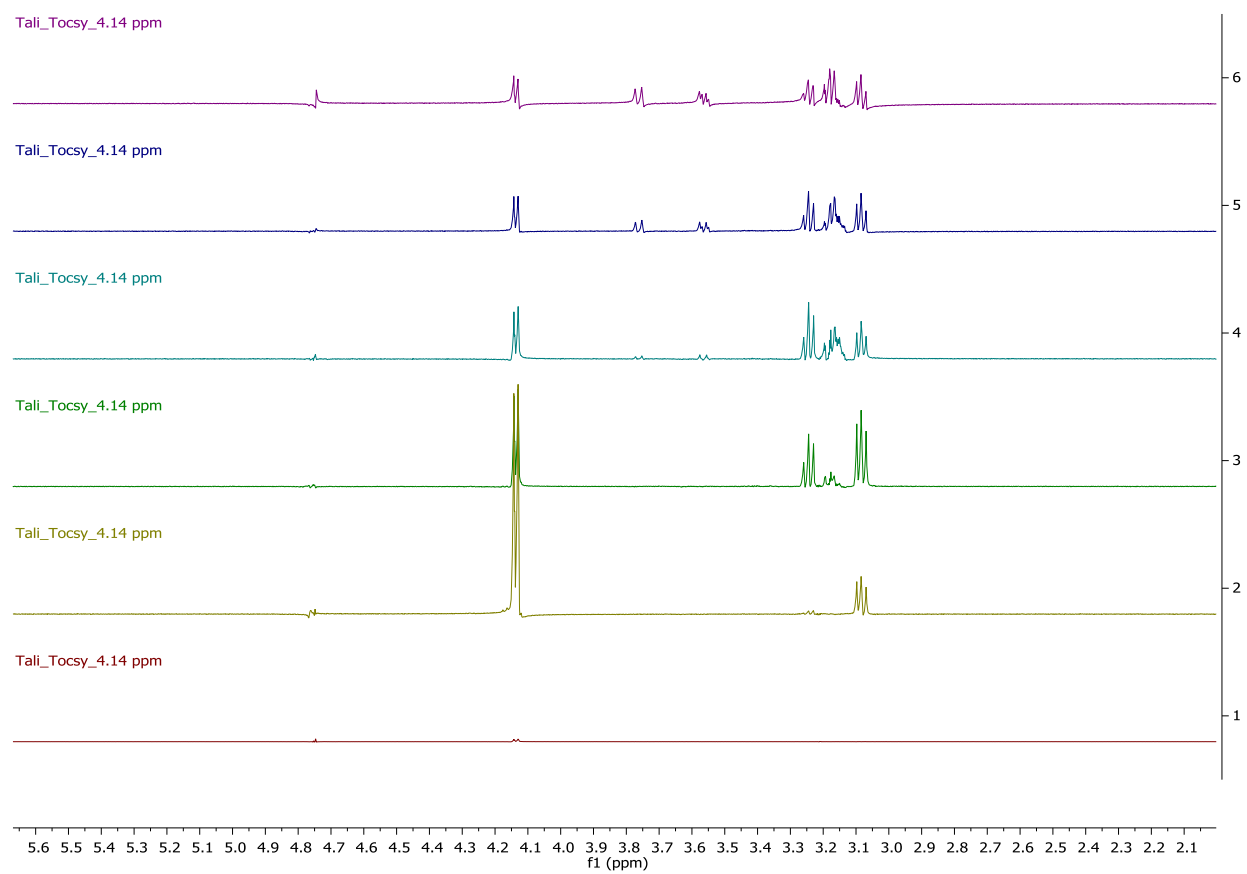




Figure S7. 2D TOCSY Spectrum of Compound **1**

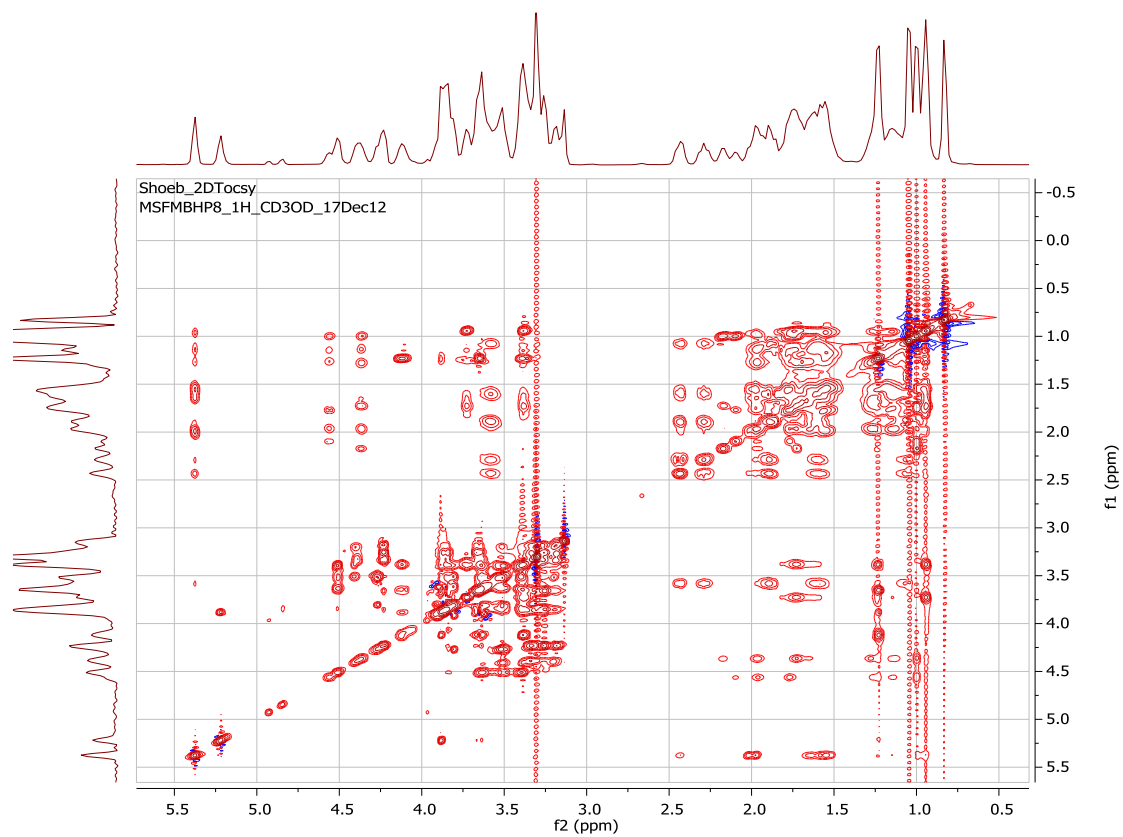


Figure S8. HRESI-MS Spectrum of Compound 1

MS15#974 RT: 17.80 AV: 1 NL:

F:

