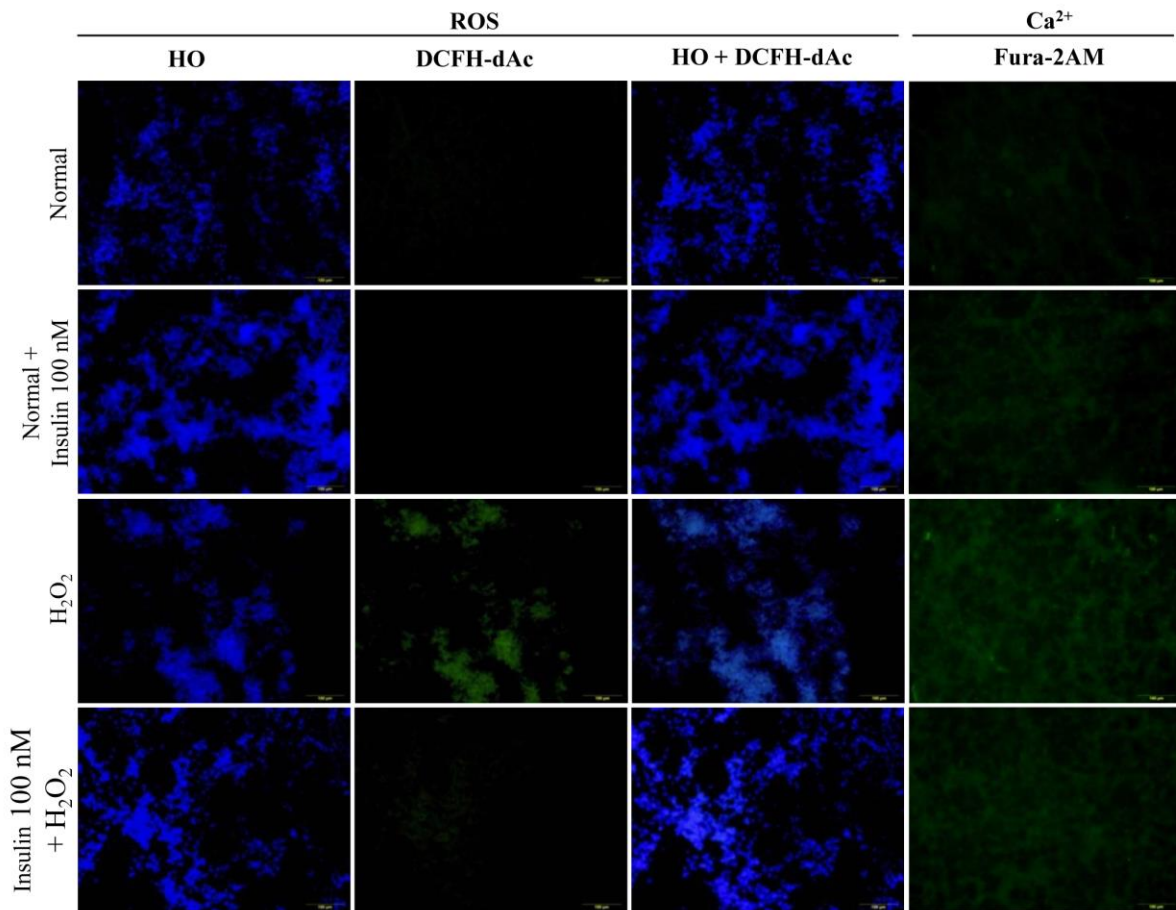
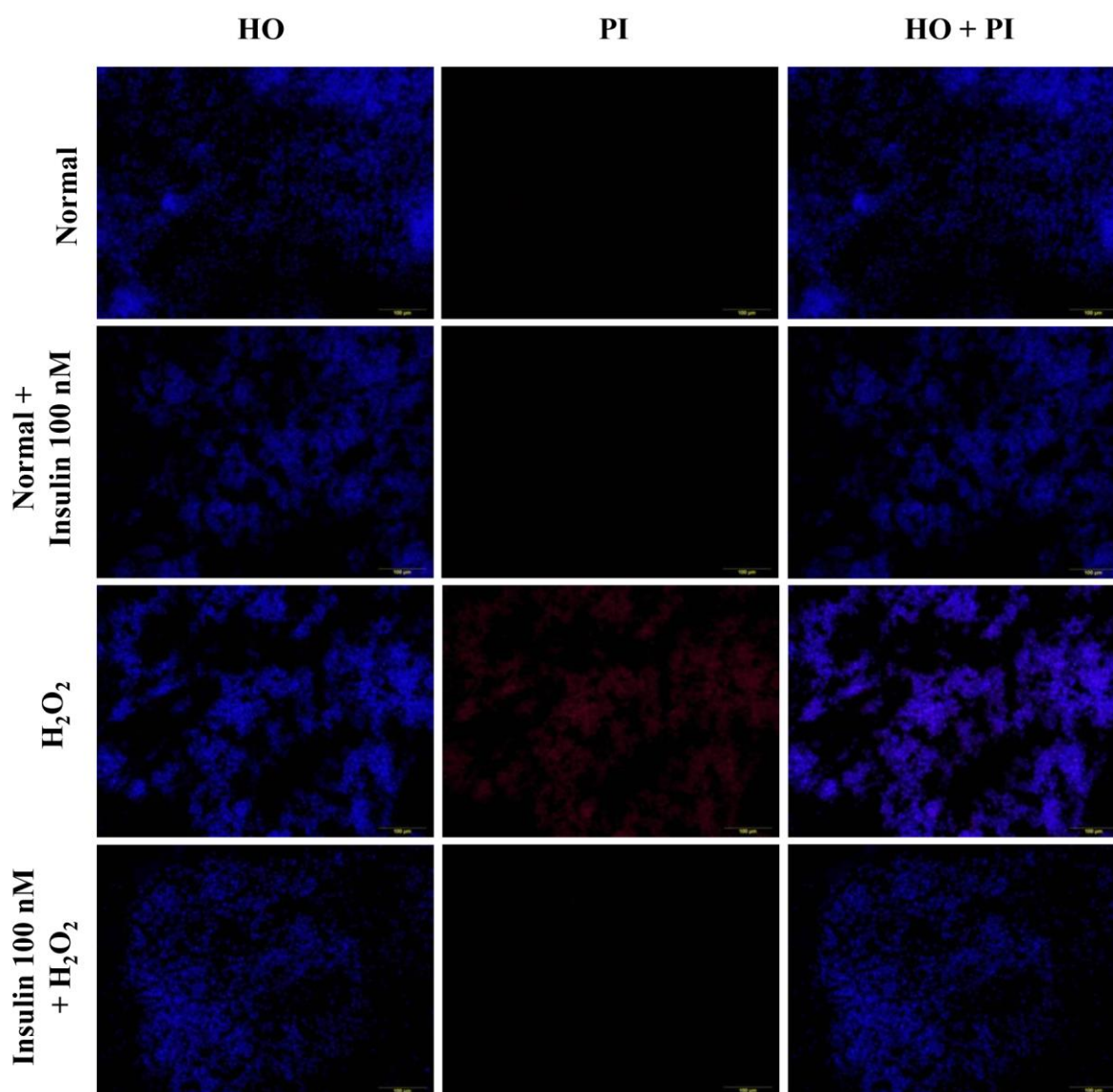


Supplemental Figure 1.



Supplemental Figure 1. C6 glial cells were treated with insulin for 1 h pre-treatment and another 24 h with or without H₂O₂ and assessed for ROS or Ca²⁺ influx by fluorescence microscopy. All assays were performed at least three independent experiments (n=3).

Supplemental Figure 2.



Supplemental Figure 2. C6 glial cells were treated with insulin for 1 h pre-treatment and another 24 h with or without H₂O₂ and stained with Hoechst and PI. All assays were performed at least three independent experiments (n=3).