

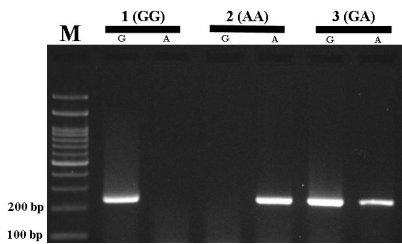
## SUPPLEMENTARY MATERIAL

### SUPPLEMENTARY TABLE 1

**Table 1.** Primers sequence for detection of lysyl oxidase (LOX) gene polymorphisms

| Primers            | Sequence (5'→3')     | Amplicon size |
|--------------------|----------------------|---------------|
| LOX; rs1800449 G>A |                      |               |
| F1 (A allele)      | CCTGCGCTCAGTAACCTTCA | 244 bp        |
| F2 (G allele)      | CTGCGCTCAGTAACCTTCG  |               |
| R                  | ACGTCGAGAAGCCACATAGC |               |
| LOX; rs2288393 C>G |                      |               |
| F1 (G allele)      | AATCCAGTGCAAACCCCG   | 439 bp        |
| F2 (C allele)      | AATCCAGTGCAAACCCCC   |               |
| R                  | CAGCTCTTGTCCTTCCT    |               |

SUPPLEMENTARY FIGURE 1. Photograph of the PCR products of the LOX rs1800449 G>A polymorphism M: DNA marker; Sample 1: GG; Sample 2: AA; Sample 3: GA.



SUPPLEMENTARY FIGURE 2. Photograph of the PCR products of the LOX rs2288393 C>G polymorphism M: DNA marker; Sample 1: CG; Sample 2: CC; Sample 3: GG. The first line is the positive control.

