

Fig S1 Calibration curve for TMRM derived as described in Methods

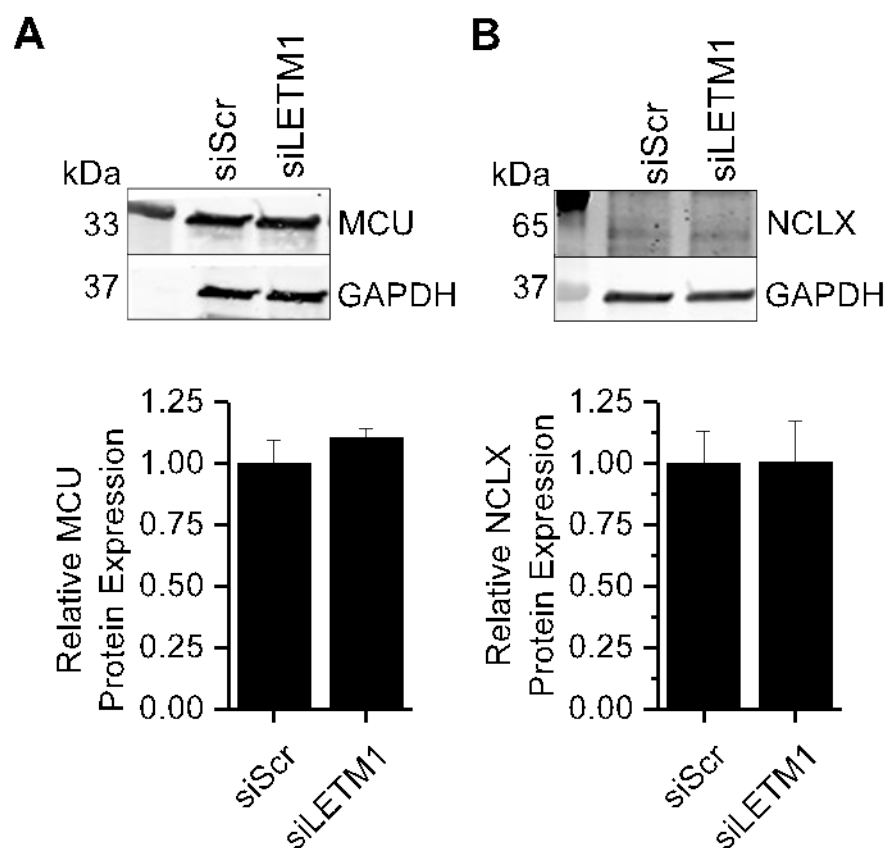


Figure S2. The protein expression of MCU (A) and NCLX (B) determined in H9c2 cells treated with scrambled (siScr) and LETM1 siRNA (siLETM1) by western blotting. GAPDH was used as a loading control. Bars represent mean \pm SEM from three independent experiments.