

Research Data Management: The 2021 review

Christiana McMahon | James Houghton | Kirsty Wallis

Foreword



To mark the start of Love Data week, it has become a UCL tradition for the research data management team to publish an annual review.

Our collective efforts to advocate for the embedding of data management best practice into policy and working environments, joined with actively participating in teaching activities and initiatives to support open science and scholarship were - and still are - priorities for the research data management team.

So let us look back over 2021, before sharing plans for going forwards.

Contents



Foreword	2
Research Data Management	4
Data management & sharing plans	9
Training	12
UCL Research Data Repository	14
Open science policy and practice	19
Going forwards	23

Research Data Management



Managing data and other research outputs at UCL

Research Data Management (RDM) covers the decisions made - and actions taken - to manage research outputs across the research data lifecycle.

RDM sits within Open Science and Scholarship complementing other areas of open research such as Open Access, Bibliometrics, Research Integrity and Citizen Science.

www.ucl.ac.uk/library/open-science-research-support/research-data-management

www.ucl.ac.uk/library/open-science-research-support/ucl-office-open-science-and-scholarship



The RDM team are now associate staff at the Centre for Advanced Research Computing

We are working even more closely with colleagues in the Research Data group to support individuals in managing their research outputs whilst they are actively researching and then once the project is complete and outputs need longer-term archiving and preservation.



WHO offers UCL a contract to host drug-resistant TB database

The RDM team participated in an interview with the WHO which contributed to UCL-TB from the MRC Clinical Trials Unit being offered a contract to curate data from around 10,000 patients.

Study documentation will be published and shared using the UCL Research Data Repository in due course.

www.who.int/news/item/17-11-2021-global-individual-patient-data-platform-for-drug-resistant-tuberculosis-treatment
<https://www.ucl.ac.uk/tb/resources-and-services/dr-tb-ipd-platform>



**“...data are facts,
observations or
experiences on which
an argument or
theory is constructed
or tested...”**

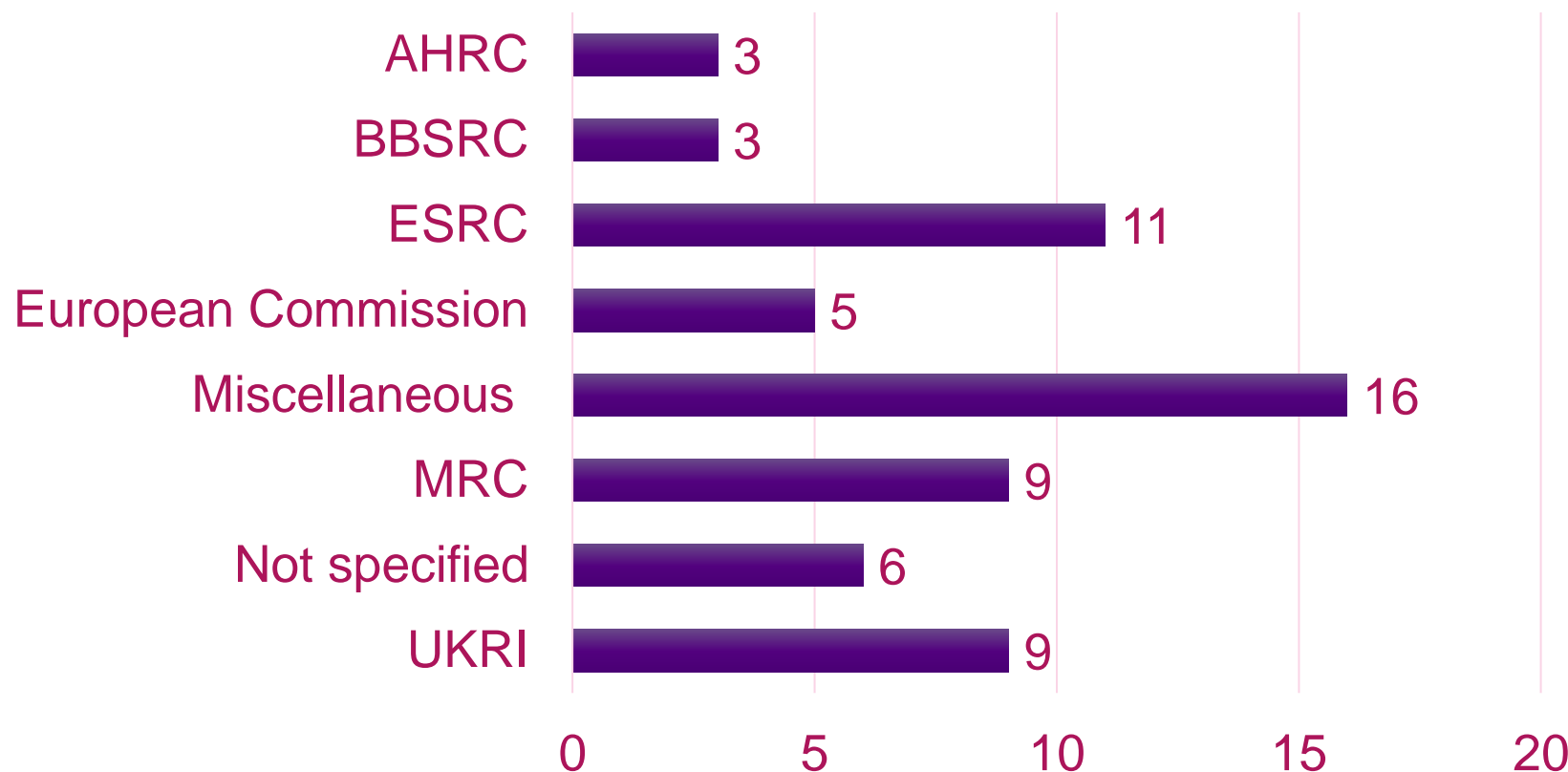
As part of our advocacy activities, we continued to promote the idea that ‘data’ refers to any output of research relevant to research findings - and the view that ‘data’ only refers to numbers in a spreadsheet stems from a historical bias towards STEM subjects.

A background image of pink flowers, likely oleander, with green leaves, set against a clear blue sky. The flowers are in various stages of bloom and are slightly out of focus, creating a soft, naturalistic backdrop.

Data management and sharing plans

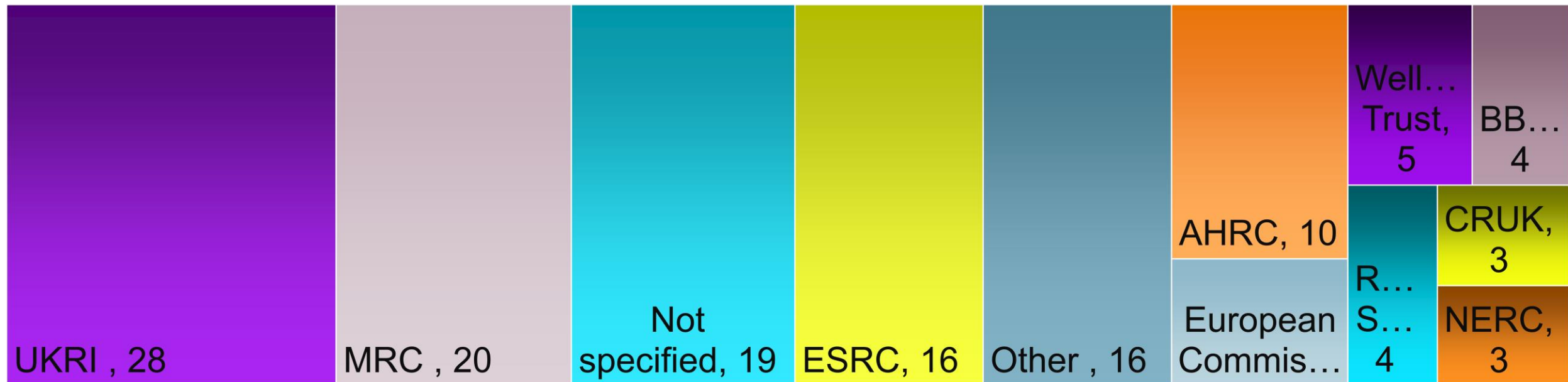


We reviewed 66 data management and sharing plans





133 Plans were reviewed between 1 January 2019 and 31 December 2021





UCL

Training



**We continued
to provide
training via
online Moodle
modules**

293 individuals have completed the **Writing data management plans** module so far as led by the RDM team <https://bit.ly/3mZ6d0v>

242 individuals have completed the **Open Science and Scholarship** module so far as led by the RDM, Open Access and Bibliometrics teams <https://bit.ly/3pVYgLq>

UCL Research Data Repository





204 published items

97000+ item downloads

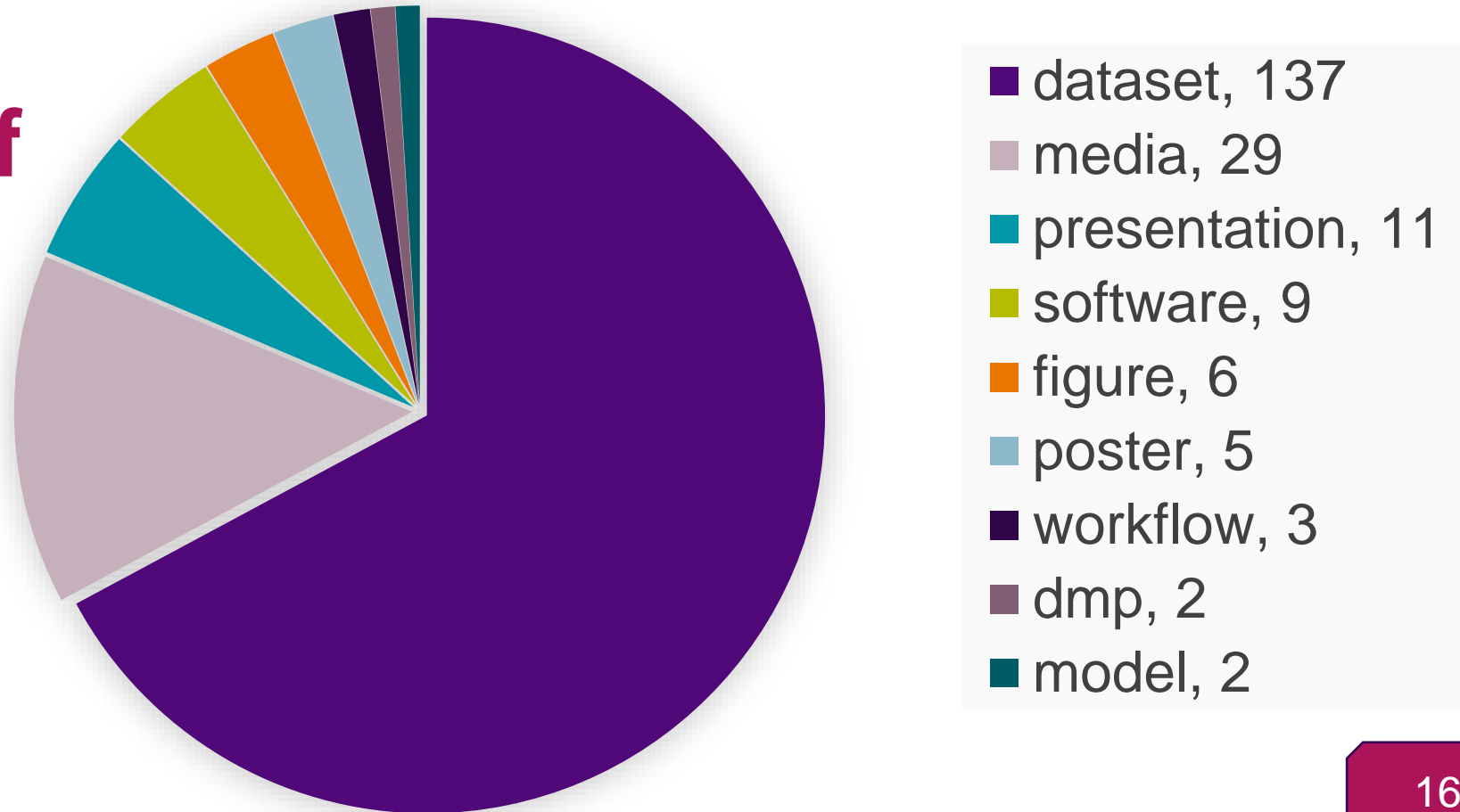
UCL staff and research students can...

- Assign a DOI to published items
- Enable discovery, access and data sharing
- Preserve & curate items for the longer-term
- Help meet UCL / journal publishers' / funders' requirements
- Create and share FAIR research outputs
- Apply embargos where necessary

www.ucl.ac.uk/library/open-science-research-support/research-data-management/ucl-research-data-repository
<https://rdr.ucl.ac.uk/>

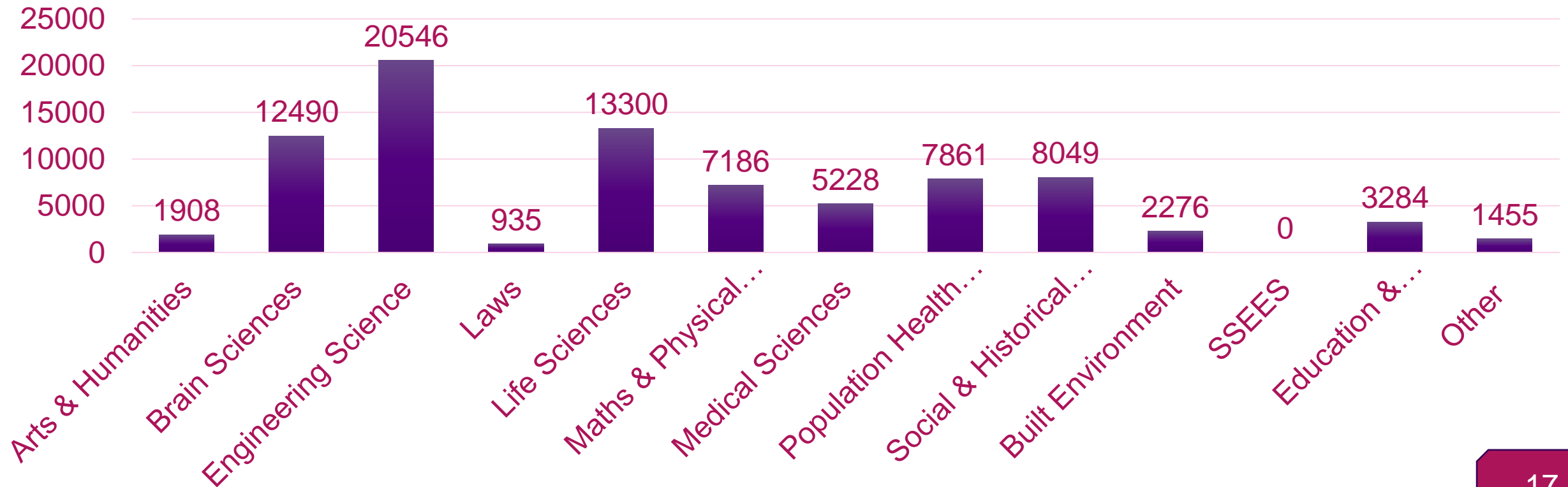


Total number of uploads to the Research Data Repository by item type





Total record views by UCL faculty





Most downloaded record in 2021

Robertson, James L; Martin, Elly; Cox, Ben; Treeby, Bradley (2021): Sensitivity of simulated transcranial ultrasound fields to acoustic medium property maps. University College London. Dataset. <https://doi.org/10.5522/04/14200220.v1>

Most viewed record in 2021

Boehm, Jan; Panella, Fabio; Melatti, Victor (2019): FireNet. University College London. Dataset. <https://doi.org/10.5522/04/9137798.v1>



UCL

Open science policy and practice



UCL signs the LERU Data Statement addressing HEIs' dependence on platform companies

Globally, stakeholders are being encouraged to build and utilise infrastructures alleviating universities' reliance on certain architectures to carry out research.

Dr Paul Ayris, Pro-Vice-Provost LCCOS said, *"...we have developed new ways to make our research and educational resources openly accessible, but there is a lot more the sector can do..."*

<https://www.ucl.ac.uk/library/news/2021/dec/new-data-statement-endorsed-european-universities>
https://www.leru.org/files/LERU-Data-Statement_12.2021.pdf



Complying with the UKRI Open Access Policy at UCL

Data access statements are key to pointing individuals to where the underlying research data are and if there are any applicable data access protocols.

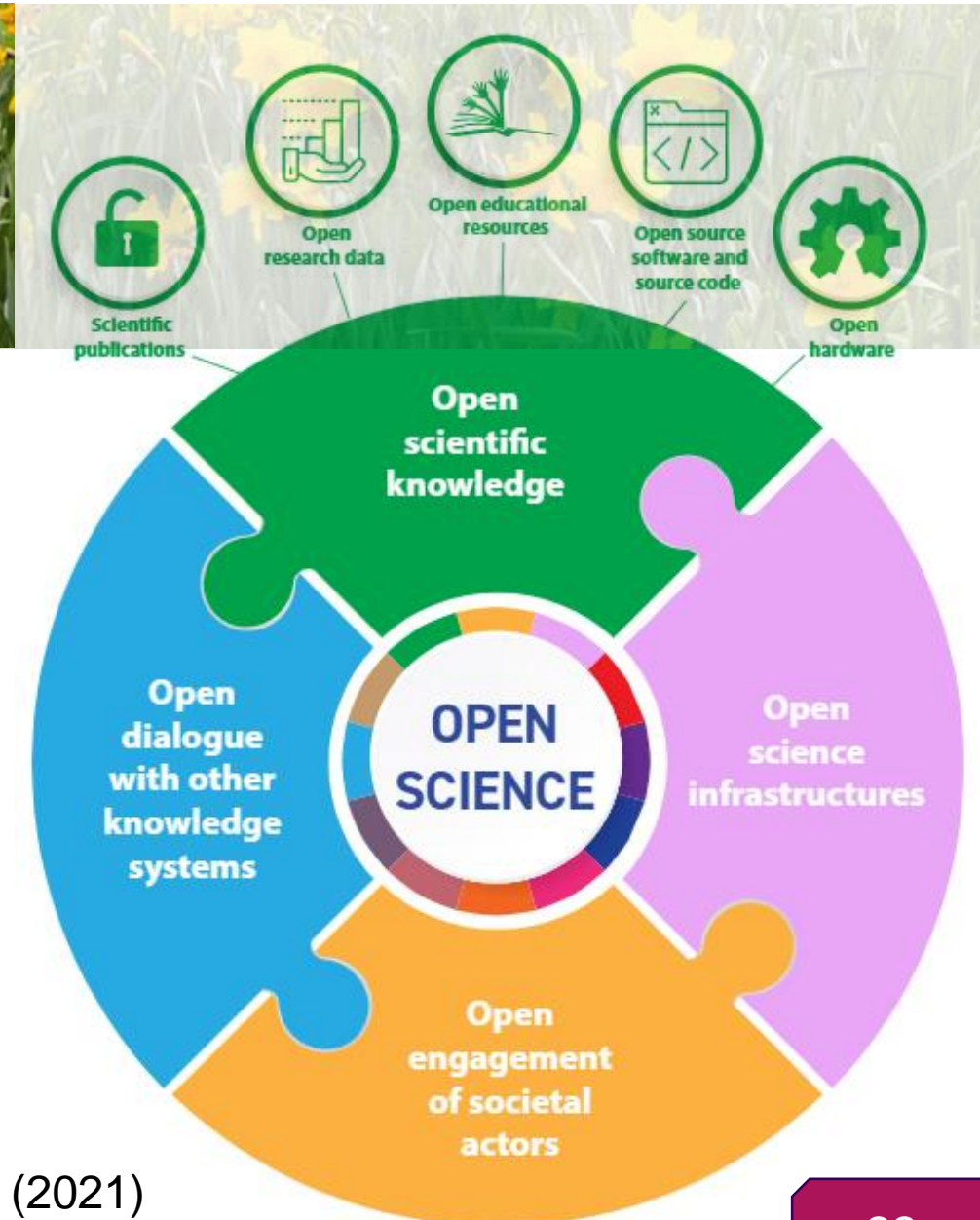
At UCL, the RDM team have continued to advocate for the inclusion of data citations in these statements and routinely issue researchers with DOIs to help meet these requirements via the UCL Research Data Repository.



UNESCO Recommendation on Open Science

The Recommendation provides guidance on carrying out open science research and the responsibilities of stakeholders across academia.

The Office for Open Science and Scholarship is continuing to coordinate activities across UCL bringing together open science policy and practice.



A close-up photograph of pink flowers with green leaves, serving as the background for the slide.

Going forwards



Library, Culture, Collections & Open Science

UCL Library Services is now known as LCCOS - Library, Culture, Collections and Open Science. LCCOS is a part of the new Office of the UCL Vice-Provost (Research, Innovation & Global Engagement) which is dedicated to, “supporting people, crossing boundaries and enabling responsible impact – for the greater good, locally, nationally and internationally.”

RDM plans for 2022

Work even more closely with colleagues across UCL to enhance data management services to support individuals across the research data lifecycle

Continue advocating for changes to policy and practice relating to the way UCL manages credit; rewarding all contributors of research and better acknowledging and including those in non-academic roles such as librarians, technicians and administrators.

Contact the RDM team

Kirsty Wallis | Head of Research Liaison & Office for Open Science and Scholarship coordinator

Christiana McMahon & James Houghton | Research Data Support Officers

Email: lib-researchsupport@ucl.ac.uk

Twitter: [@UCLopenscience](https://twitter.com/UCLopenscience)

Web: www.ucl.ac.uk/library/open-science-research-support/research-data-management