

**Tailoring 3D-Single-Walled Carbon Nanotubes Anchored to Indium Tin Oxide for  
Natural Cellular Uptake and Intracellular Sensing**

**F. J. Rawson, C. L. Yeung, S. K. Jackson, P. M. Mendes**

**SUPPORTING INFORMATION**

---

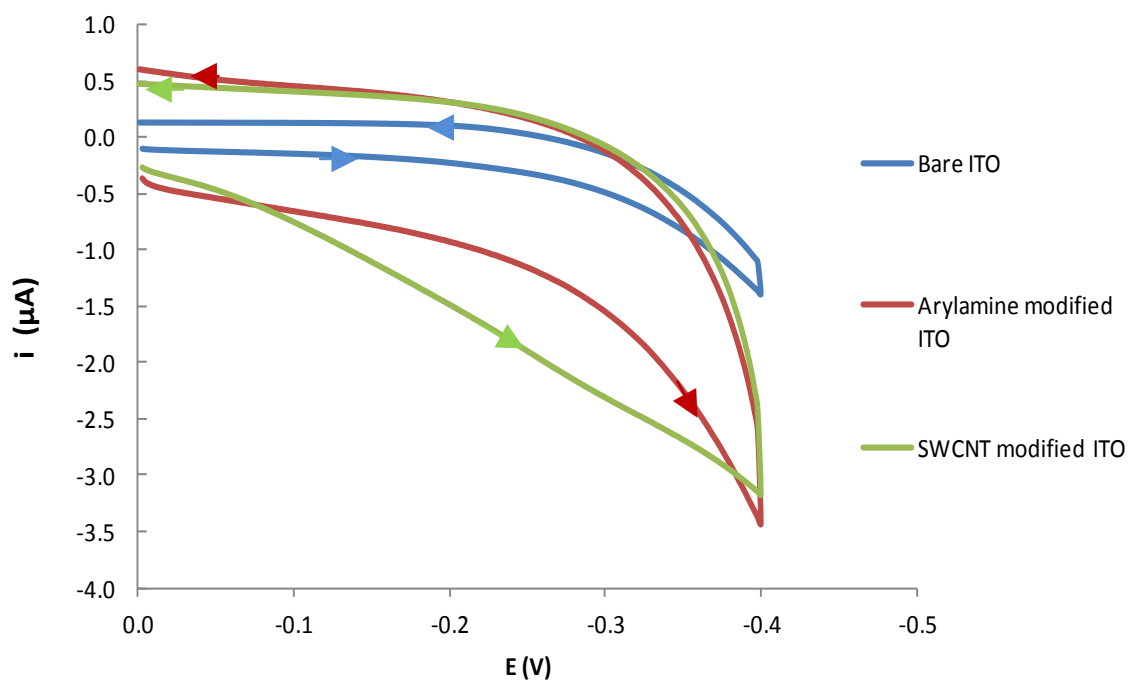


Fig S1. Typical CVs of PBS at bare ITO, arylamine modified ITO and SWCNT modified ITO, at a scan rate of  $0.1 \text{ V s}^{-1}$ .

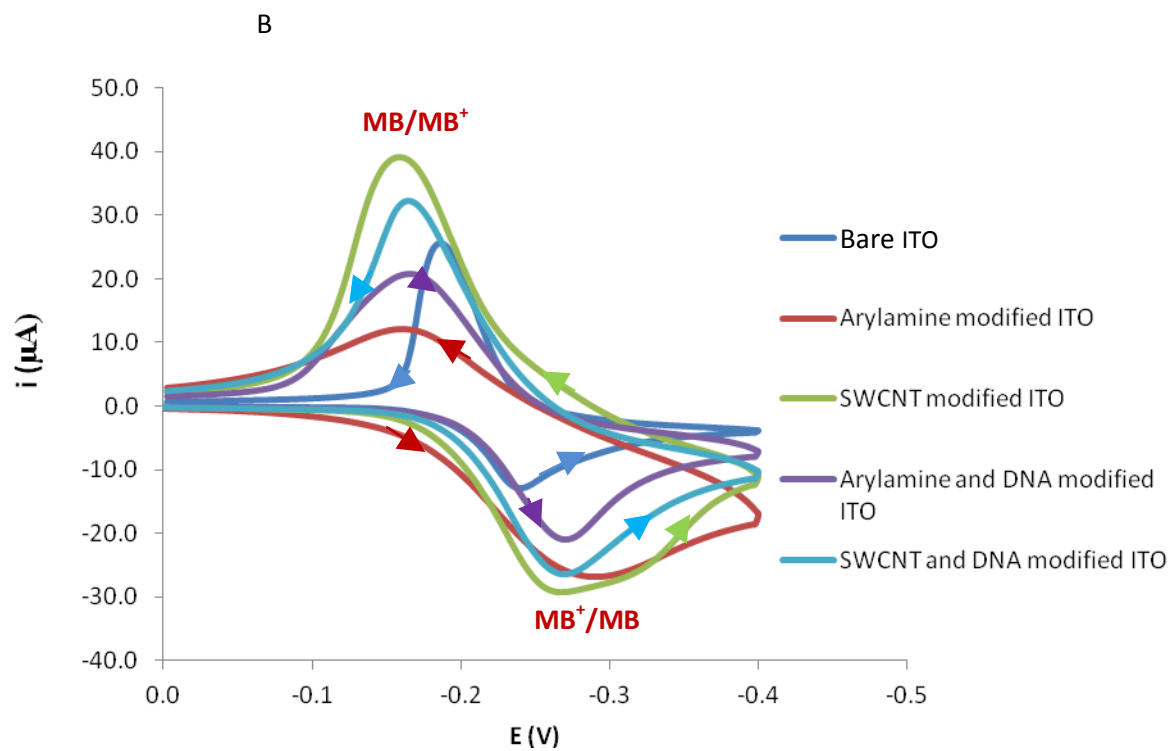


Fig S2. Typical CVs of 500  $\mu\text{M}$  solutions of MB in PBS at bare ITO, arylamine modified ITO and SWCNT modified ITO, and the latter two surfaces modified with DNA at a scan rate of  $0.1 \text{ V s}^{-1}$ .