

Supporting Information

Lithium Ion Diffusion in a Metal–Organic Framework Mediated by an Ionic Liquid

Kazuyuki Fujie^{*,a,b}, Ryuichi Ikeda^{b,c}, Kazuya Otsubo^b, Teppei Yamada^{b,†}, and Hiroshi Kitagawa^{*,b,d,e,f}

^aR&D Center Kagoshima, Kyocera Corporation, 1-4 Kokubuyamashita-cho, Kirishima, Kagoshima 899-4312, Japan

^bDivision of Chemistry, Graduate School of Science, Kyoto University, Kitashirakawa Oiwake-cho, Sakyo-ku, Kyoto 606-8502, Japan

^cDepartment of Chemistry, University of Tsukuba, Tsukuba 305, Japan

^dCore Research for Evolutional Science and Technology (CREST), Japan Science and Technology Agency (JST), 5 Sanban-cho, Chiyoda-ku, Tokyo 102-0075, Japan

^eInstitute for Integrated Cell-Material Sciences (iCeMS), Kyoto University, Yoshida, Sakyo-ku, Kyoto 606-8501, Japan

^fINAMORI Frontier Research Center, Kyushu University, 744 Motooka, Nishi-ku, Fukuoka 819-3095, Japan

[†]Present addresses: Department of Chemistry and Biochemistry, Graduate School of Engineering, Kyushu University, Nishi-ku, Fukuoka 819-0395, Japan; International Research Center for Molecular Systems (IRCMS), Kyushu University, Nishi-ku, Fukuoka 819-0395, Japan

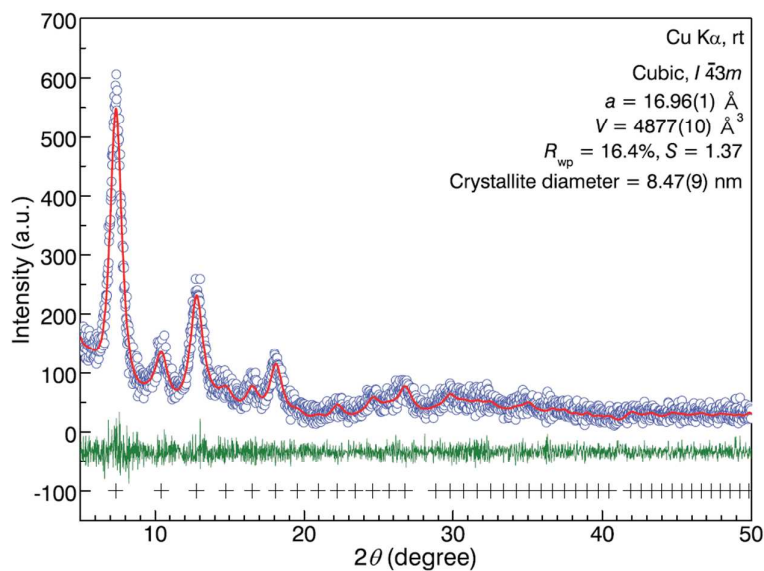


Figure S1. Le Bail analysis for ZIF-8 nanoparticles (Cu- $K\alpha$, rt). Blue open circles, red solid line, green solid line, and black crosses show the observed, calculated, difference profiles, and Bragg peaks, respectively. The obtained lattice parameters, R_{wp} factor goodness-of-fit (S), and crystallite diameter are also shown.

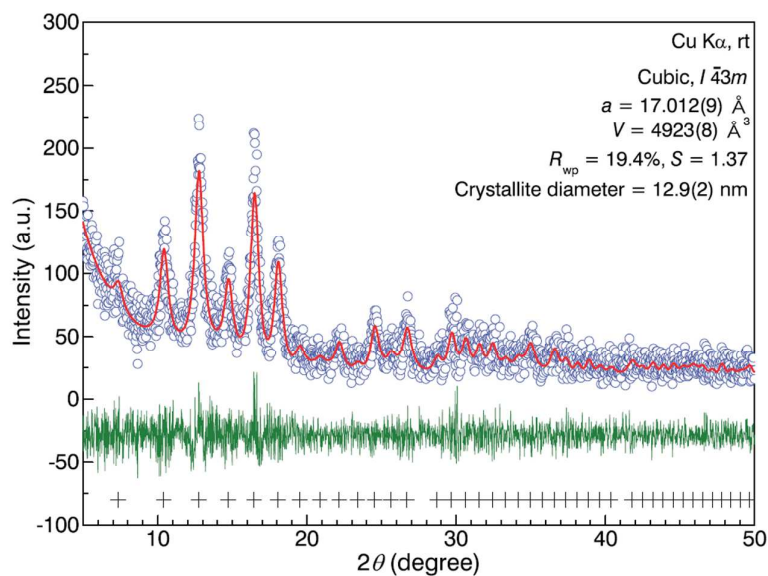


Figure S2. Same as Figure S1 but for ELT@Z₇₅.

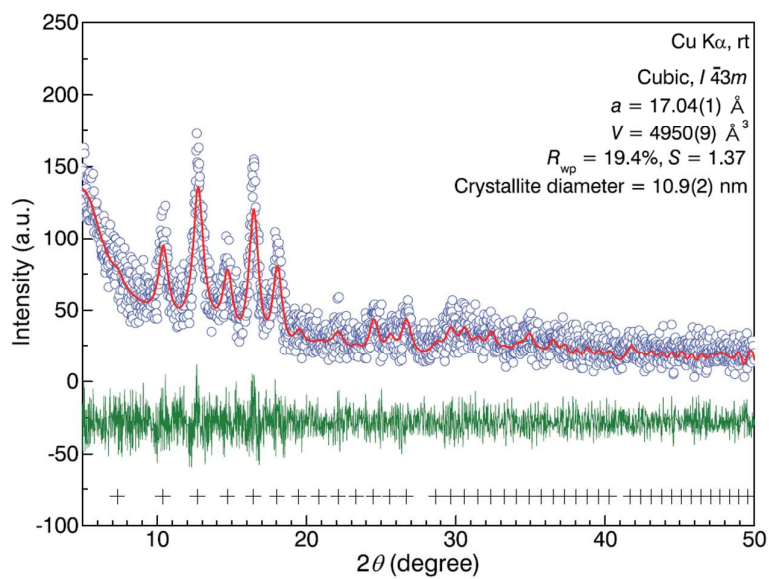


Figure S3. Same as Figure S1 but for ELT@Z₁₀₀.

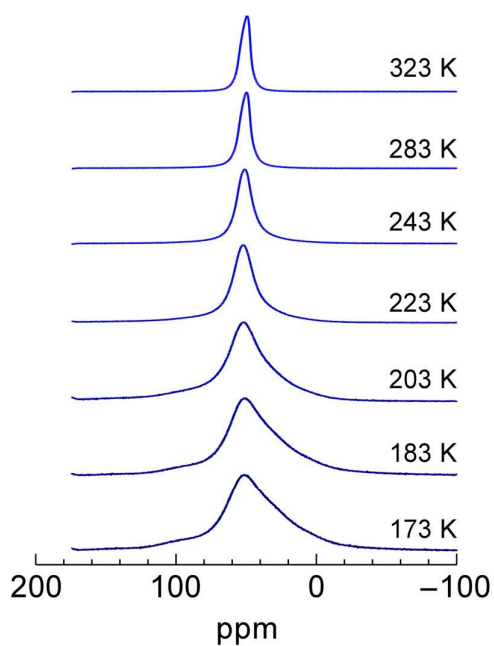


Figure S4. Solid-state static ^{19}F NMR spectra of ELT@Z_{75} . The NMR spectra were obtained stepwise during heating.

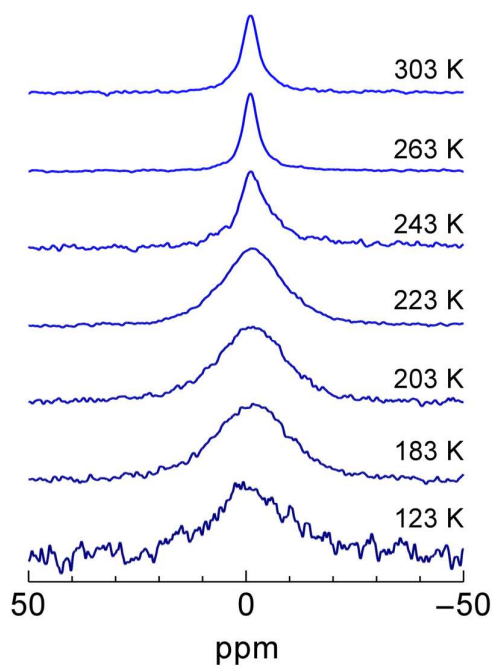


Figure S5. Solid-state static ^7Li NMR spectra of ELT@Z_{75} . The NMR spectra were obtained stepwise during heating.

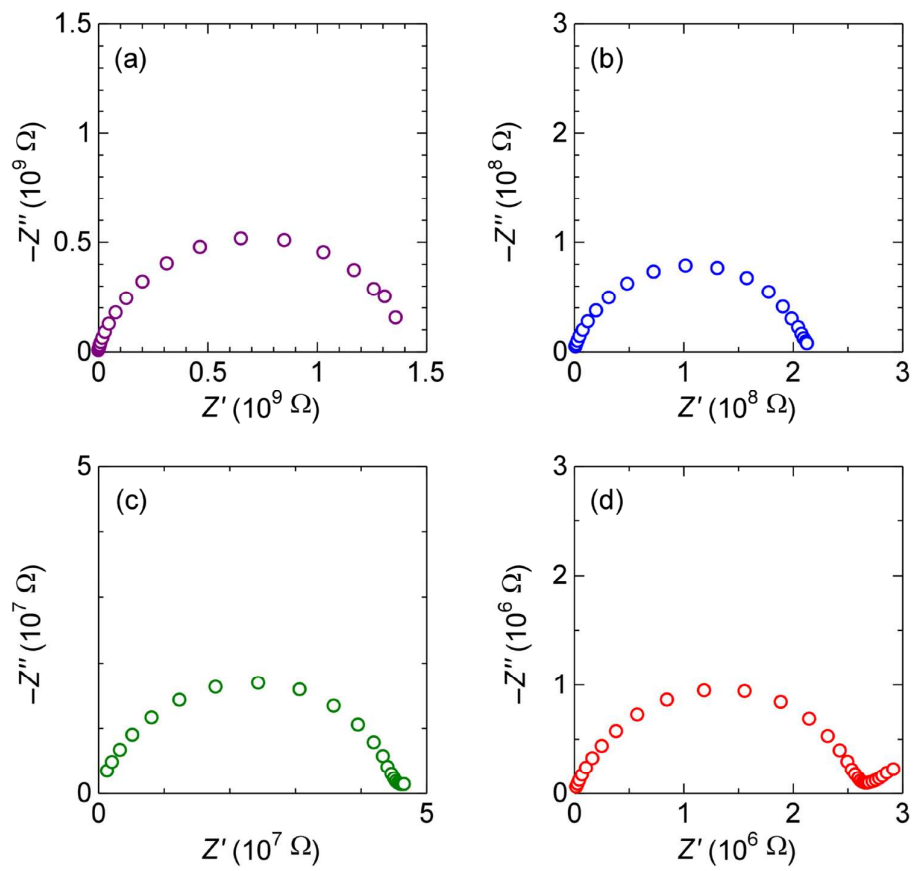


Figure S6. Nyquist plots of ELT@Z₇₅ at 282 K (a), 296 K (b), 309 K (c), and 344 K (d).

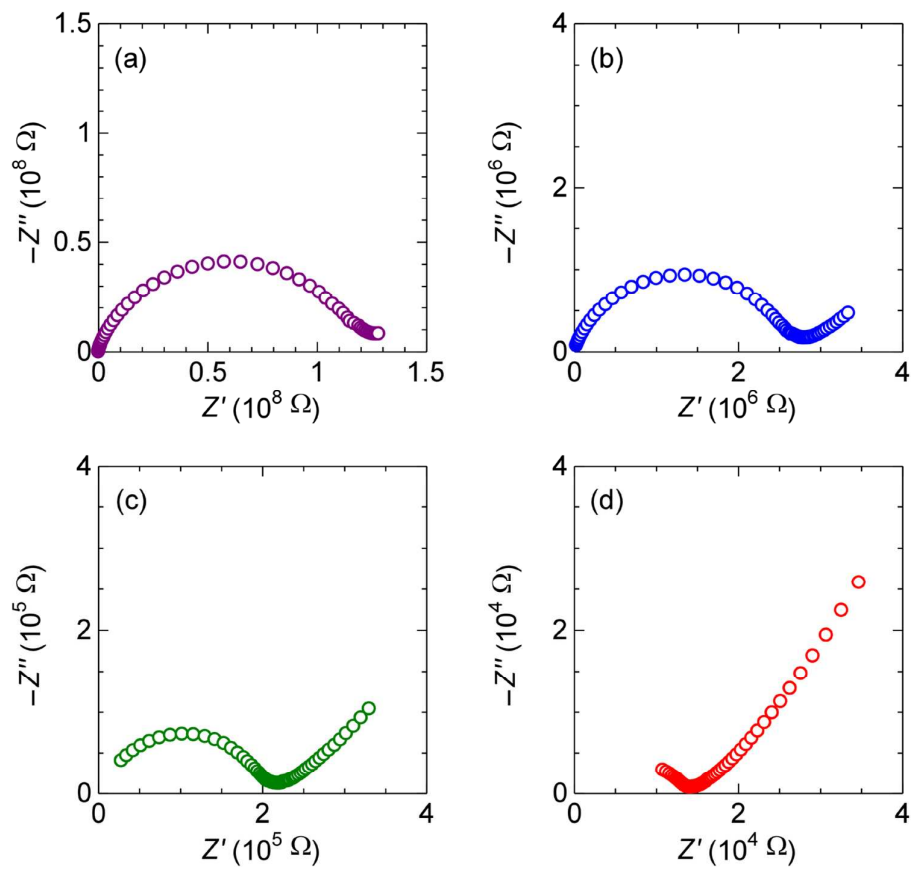


Figure S7. Nyquist plots of ELT@Z₁₀₀ at 241 K (a), 268 K (b), 295 K (c), and 343 K (d).