

## Supporting Information

# Construction of chitin/PVA composite hydrogels with jellyfish gel-like structure and their biocompatibility

Meng He, Zhenggang Wang, Yan Cao, Yanteng Zhao, Bo Duan,

Yun Chen, Min Xu and Lina Zhang<sup>\*</sup>

## FIGURE CAPTIONS

**Table S1.** Chemical shift of PCP powder and RCP gels from  $^{13}\text{C}$ NMR.

**Scheme S1.** Scheme S1. Preparation process of RCP gels (a), SEM micrograph of the freeze-dried jellyfish1 (b) and putative crosslinking reaction (c). b is reproduced from reference 1 with permission of the Royal Society of Chemistry.  
<http://dx.doi.org/10.1039/C0SM00632G>.

**Figure S1.** Photographs of raw chitin powder (a) and PCP powder (b).

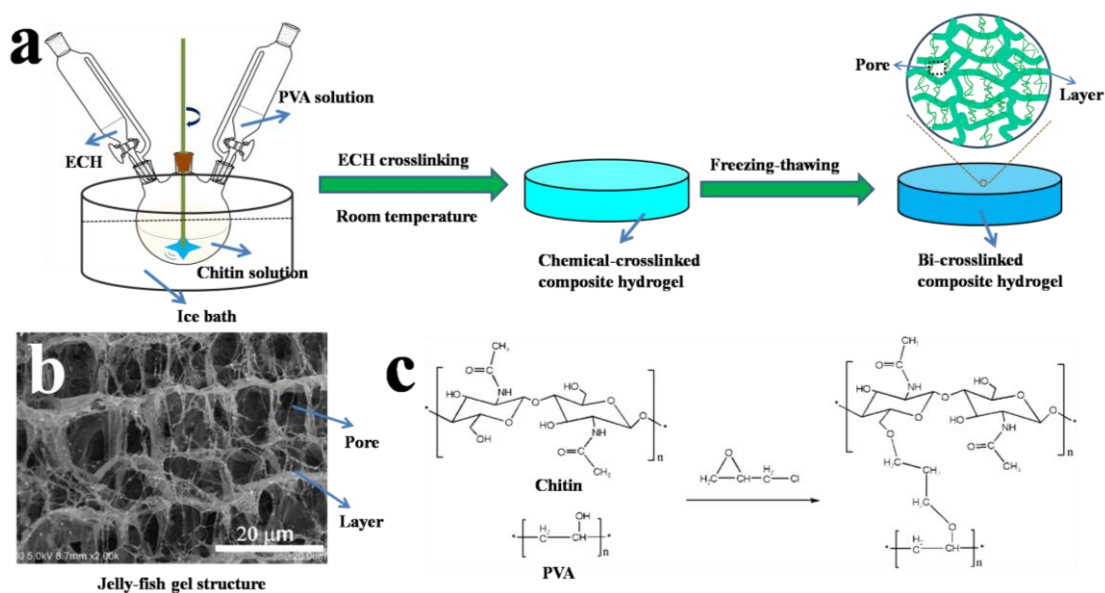
**Figure S2.** FESEM images of raw chitin powder (a) and PCP powder (b).

**Figure S3.** Expanded FTIR spectrum of PCP powder.

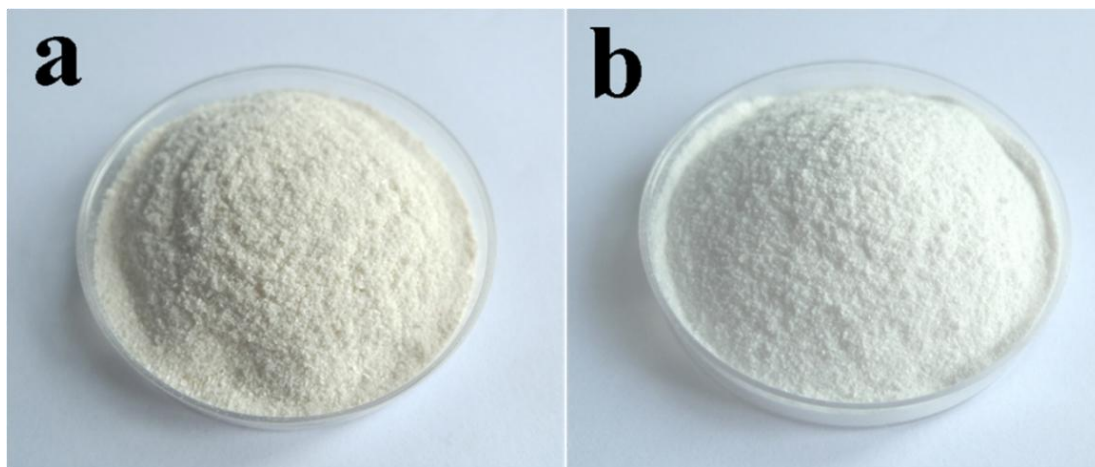
**Figure S4.** FESEM images of cross-section for the RCP79 (a) and RCP70 (b) gels.

**Table S1.** Chemical shift of PCP powder and RCP gels from  $^{13}\text{C}$ NMR.

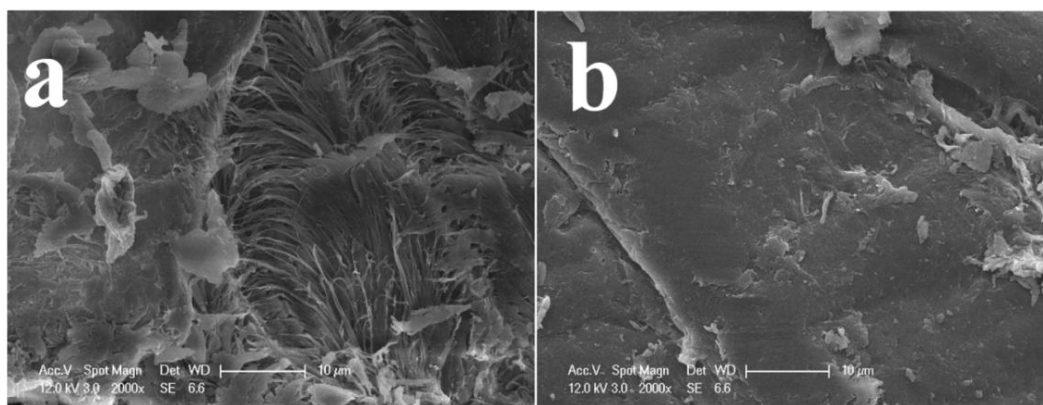
Samples	Chemical Shift (ppm)							
	C1	C2	C3	C4	C5	C6	C7 (C=O)	C8 (CH <sub>3</sub> )
PCP	104.5	58.1	73.6	83.9	76.0	61.3	174.0	23.5
RCP100	104.5	58.6	75.5	84.3	75.5	62.7	175.9	25.0
RCP75	103.9	55.1	74.6	83.3	74.6	61.8	173.2	23.0
RCP50	102.4	54.1	72.8	81.7	68.7	63.3	173.0	21.6
RCP25	102.2	53.9	69.2	81.5	69.2	63.4	173.0	21.3



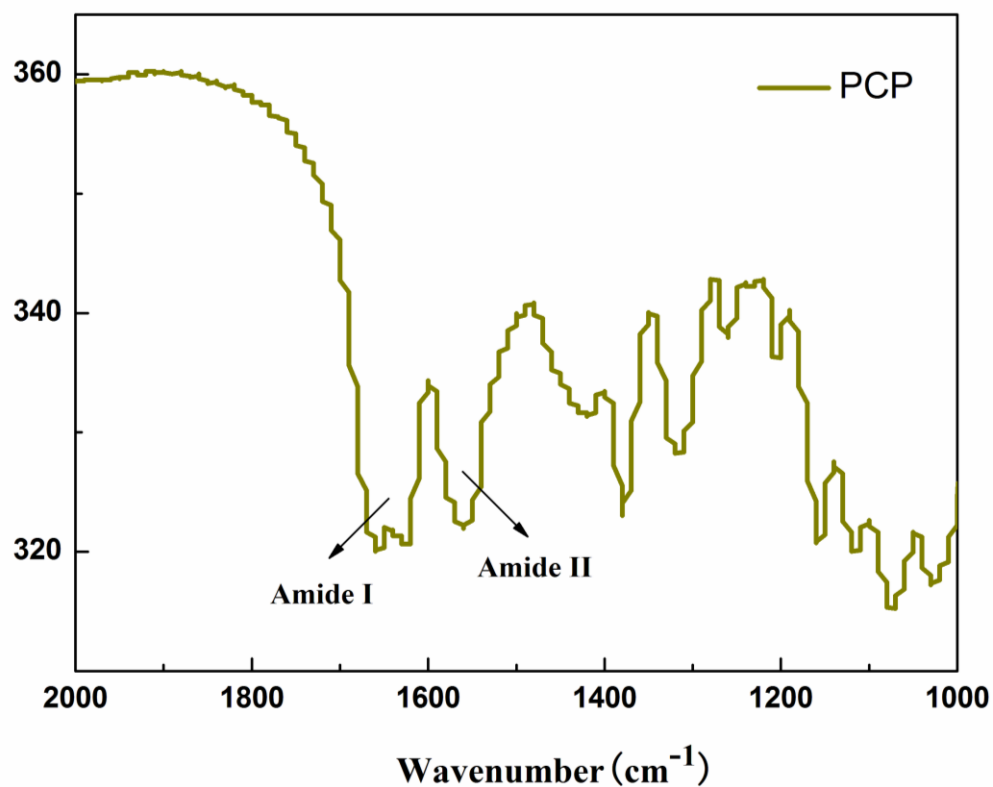
**Scheme S1.** Scheme S1. Preparation process of RCP gels (a), SEM micrograph of the freeze-dried jellyfish1 (b) and putative crosslinking reaction (c). b is reproduced from reference 1 with permission of the Royal Society of Chemistry. <http://dx.doi.org/10.1039/C0SM00632G>.



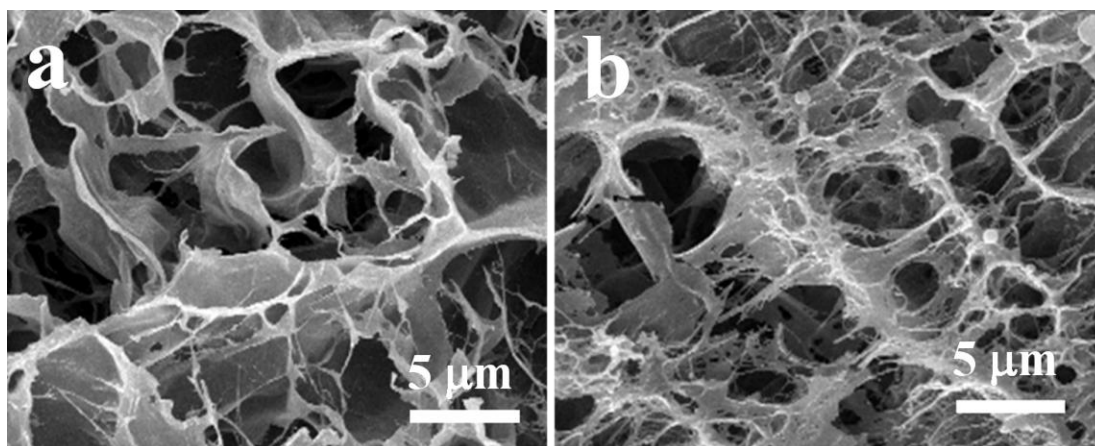
**Figure S1.** Photographs of raw chitin powder (a) and PCP powder (b).



**Figure S2.**FESEM images of raw chitin powder (a) and PCP powder (b).



**Figure S3.** Expanded FTIR spectrum of PCP powder.



**Figure S4.** FESEM images of cross-section for the RCP79 (a) and RCP70 (b) gels.

## References

1. Wang, X.; Wang, H.; Brown, H.R. *Soft Matter* **2011**, 7, 211-219.