

# Investigation of the Effect of Extra Lithium Addition and Post-annealing on the Electrochemical Performance of High-voltage Spinel $\text{LiNi}_{0.5}\text{Mn}_{1.5}\text{O}_4$ Cathode Material

*Yunxian Qian,<sup>†</sup> Yuanfu Deng,<sup>\*,‡,§</sup> Lina Wan,<sup>‡</sup> Hongjie Xu,<sup>⊥</sup> Xusong Qin,<sup>§</sup> and Guohua Chen<sup>\*,†</sup>,*

*§,⊥*

<sup>†</sup> Fok Ying Tung Graduate School, the Hong Kong University of Science and Technology, Clear Water Bay, Kowloon, Hong Kong, China

<sup>‡</sup> The Key Laboratory of Fuel Cell Technology of Guangdong province, School of Chemistry and Chemical Engineering, South China University of Technology, Guangzhou, China

<sup>§</sup> Center for Green Products and Processing Technologies, Guangzhou HKUST Fok Ying Tung Research Institute, Guangzhou 511458, China

<sup>⊥</sup> Department of Chemical and Biomolecular Engineering, the Hong Kong University of Science and Technology, Clear Water Bay, Kowloon, Hong Kong, China

Figure S1. SEM images of the samples: (a) 0%, (b) 2%, (c) 5%, (d) 8%, (e) A-2% and (f) A-5%.

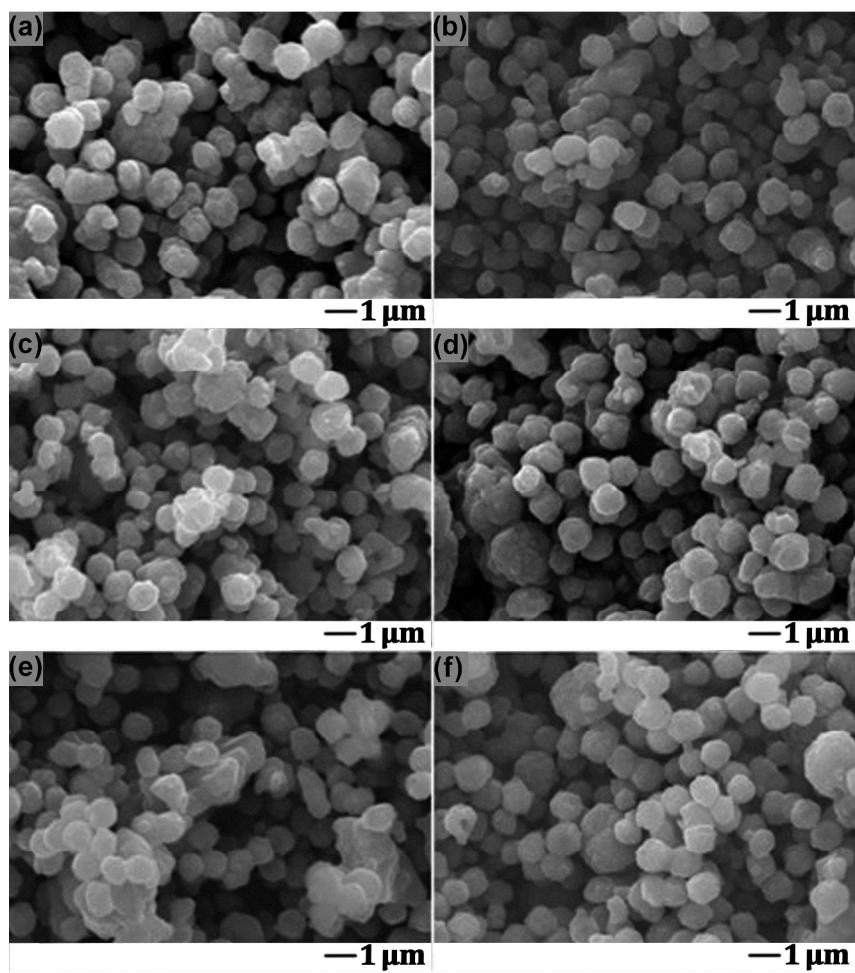


Figure S2. The cyclic voltammetric curves of the Sample 0%, 2%, 5%, 8%, A-2% and A-5% at a sweeping rate of  $0.1 \text{ mV s}^{-1}$ .

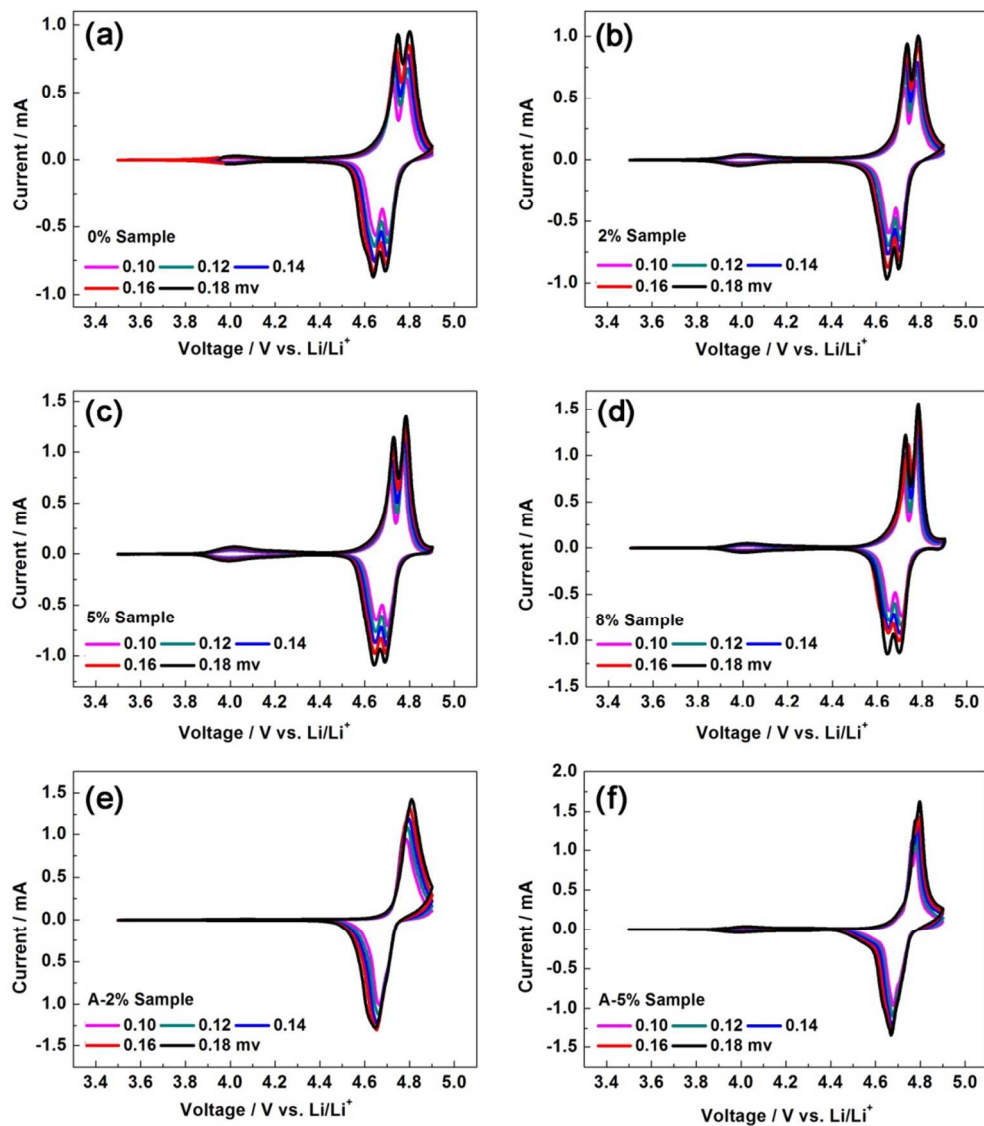


Figure S3. The cycling performance of Sample 0%, 2%, 5%, 8%, A-2% and A-5% at a 2 C rate and 55 °C.

