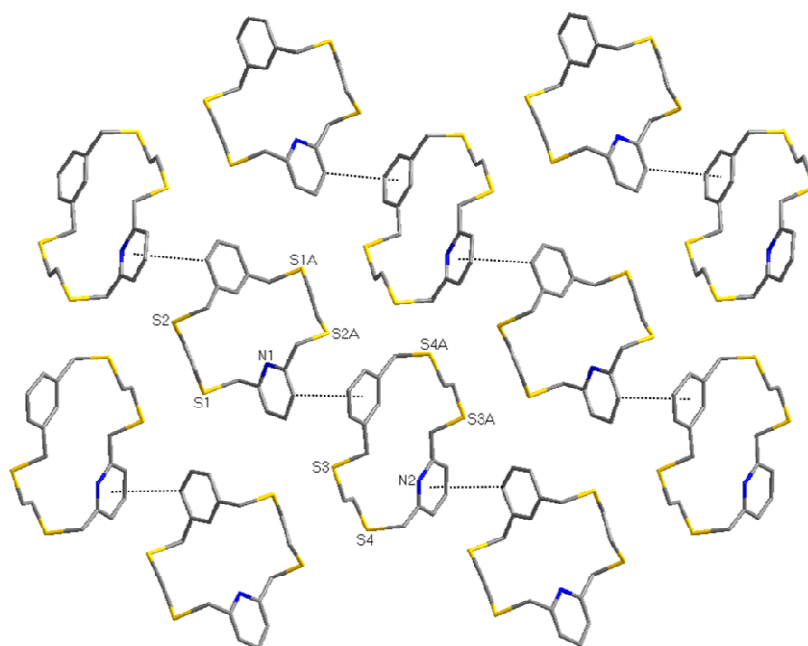


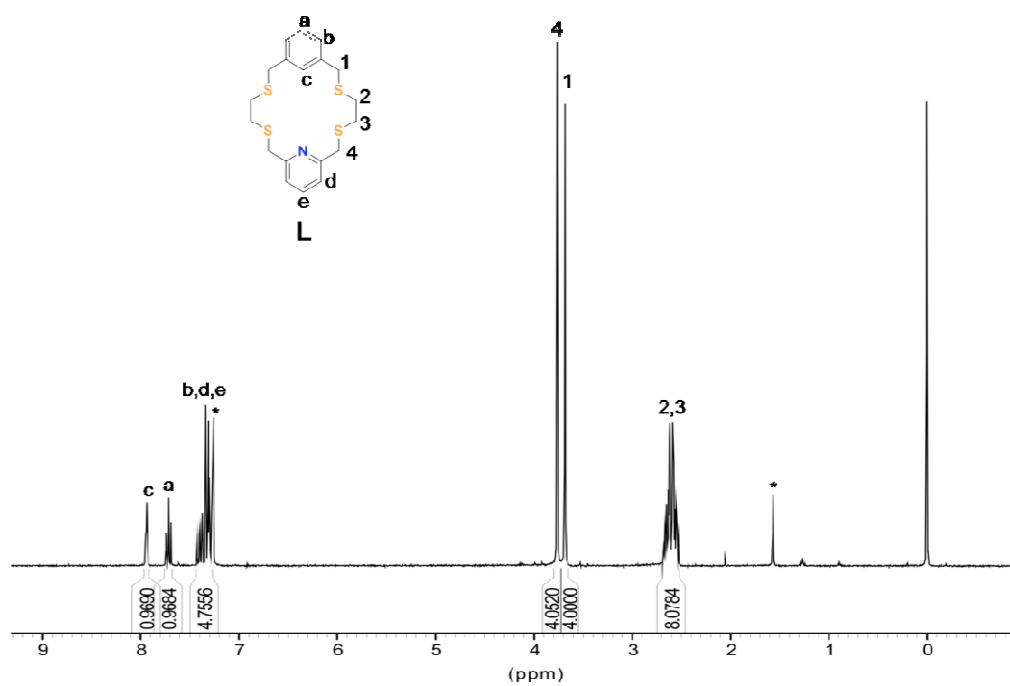
**Supporting Information**  
**for**  
A Rational Approach to Endo/Exocoordinated  
Heteronuclear Macrocyclic Network: Supramolecular  
Hg(II), Cu(II), and Hg(II)/Cu(II) Complexes of an NS<sub>4</sub>  
Macrocycle

Eunji Lee and Shim Sung Lee\*

*Department of Chemistry and Research Institute of Natural Sciences,  
Gyeongsang National University, Jinju 660-701, S. Korea*



**Figure S1.** Crystal packing diagram of **L**, showing intermolecular C-H... $\pi$  interaction (dashed lines, C...centroid distance 4.08 Å).



**Figure S2.**  $^1\text{H}$  NMR spectrum of **L** in  $\text{CDCl}_3$ .