

Supporting Information

Electrodeposition of Cu(In,Ga)Se₂ crystals on high-density CdS nanowire arrays for photovoltaic applications

Woo-Chul Kwak,[†] Sung-Hwan Han,[‡] Tae Geun Kim,[#] Yun-Mo Sung^{†,*}

[†]Department of Materials Science & Engineering, Korea University, Seoul 136-713, South Korea

[‡]Department of Chemistry, Hanyang University, Seoul 133-791, South Korea

[#]Department of Electronic Engineering, Korea University, Seoul 136-713, South Korea

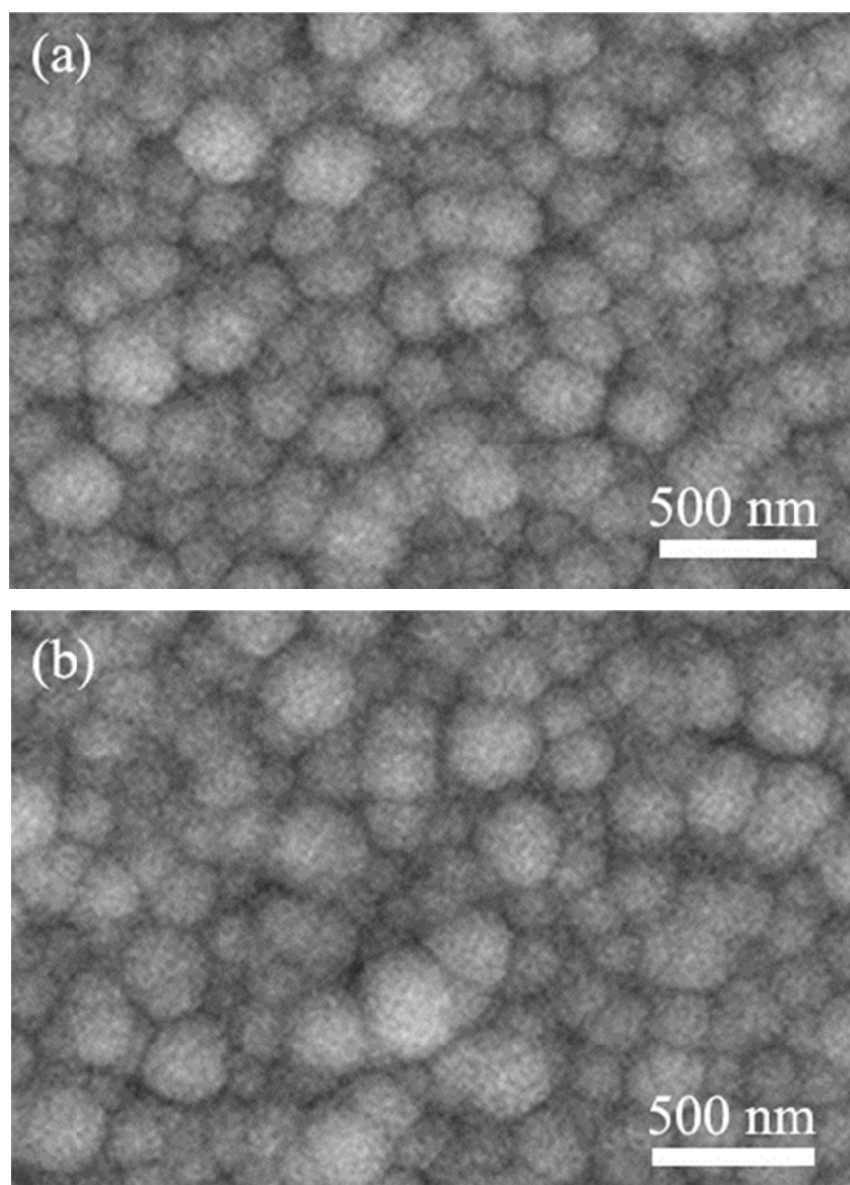


Fig. S1. FESEM images of selenized CIGS/CdS nanowires (a) and CIGS/CdS film (b).

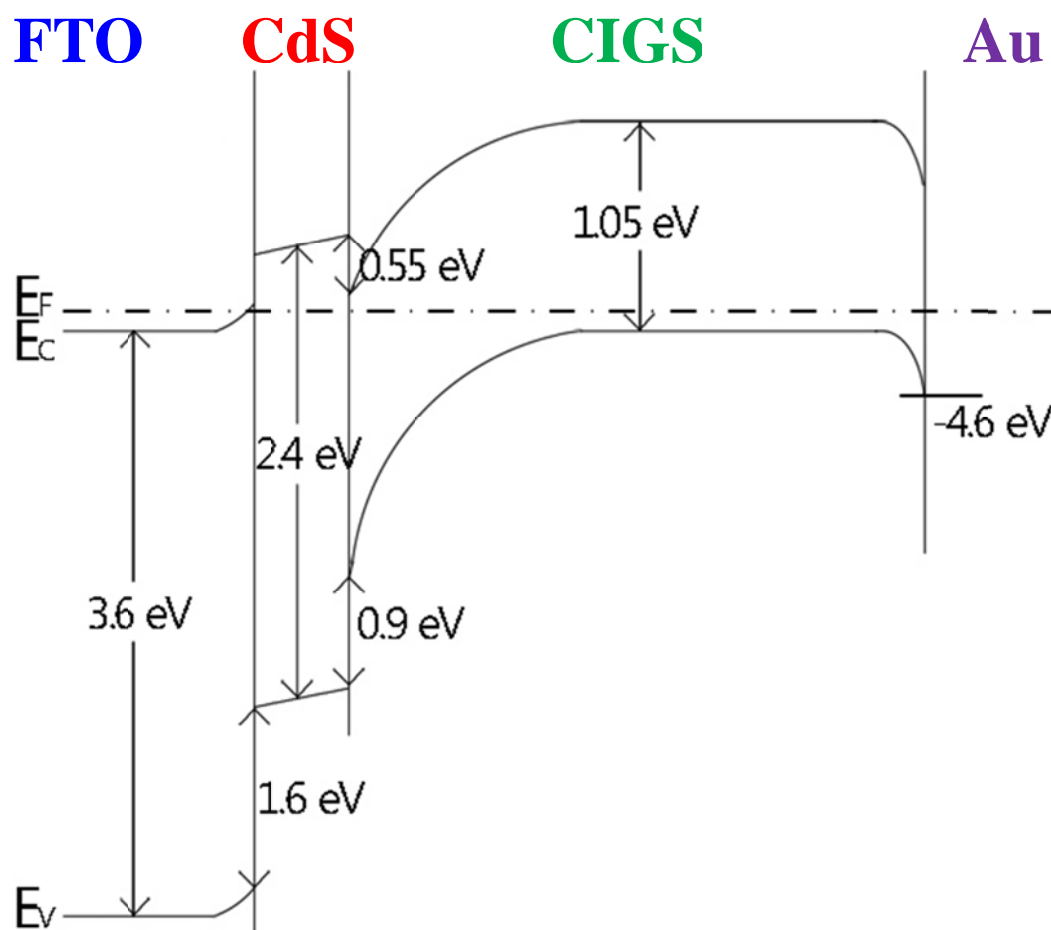


Fig. S2. Energy band structure of Au/CIGS/CdS/FTO system.