

Figure S1. Optical microscopic image of crystallized PMF emulsion taken at 5 °C, which was subjected to microbeam small-angle X-ray diffraction (μ -SAXD).

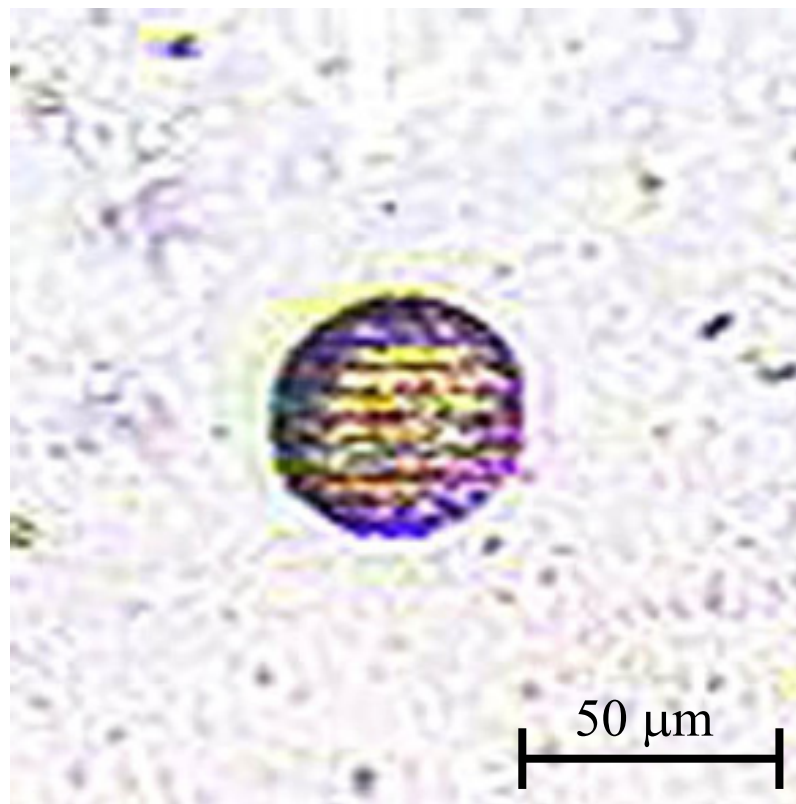


Figure S2. μ -SAXD patterns of PMF crystals taken at different positions in emulsion droplets emulsified with Tween 80. A dotted line and solid allow lines indicates emulsion droplet interface and lamella plane directions.

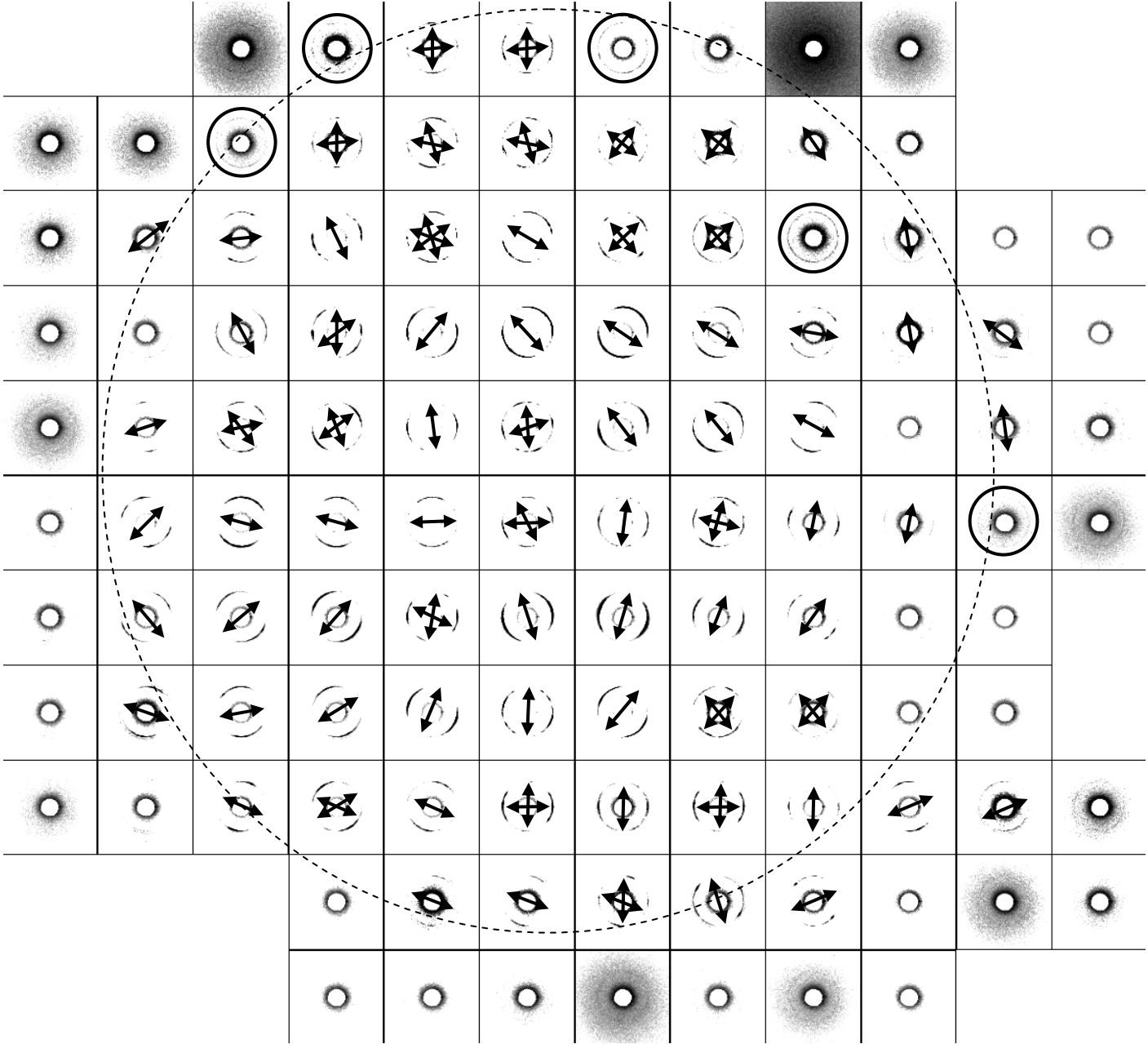


Figure S3. μ -SAXD patterns of PMF crystals taken at different positions in emulsion droplets emulsified with Tween 80 and P-170 additive. A dotted line and solid allow lines indicates emulsion droplet interface and lamella plane directions.

