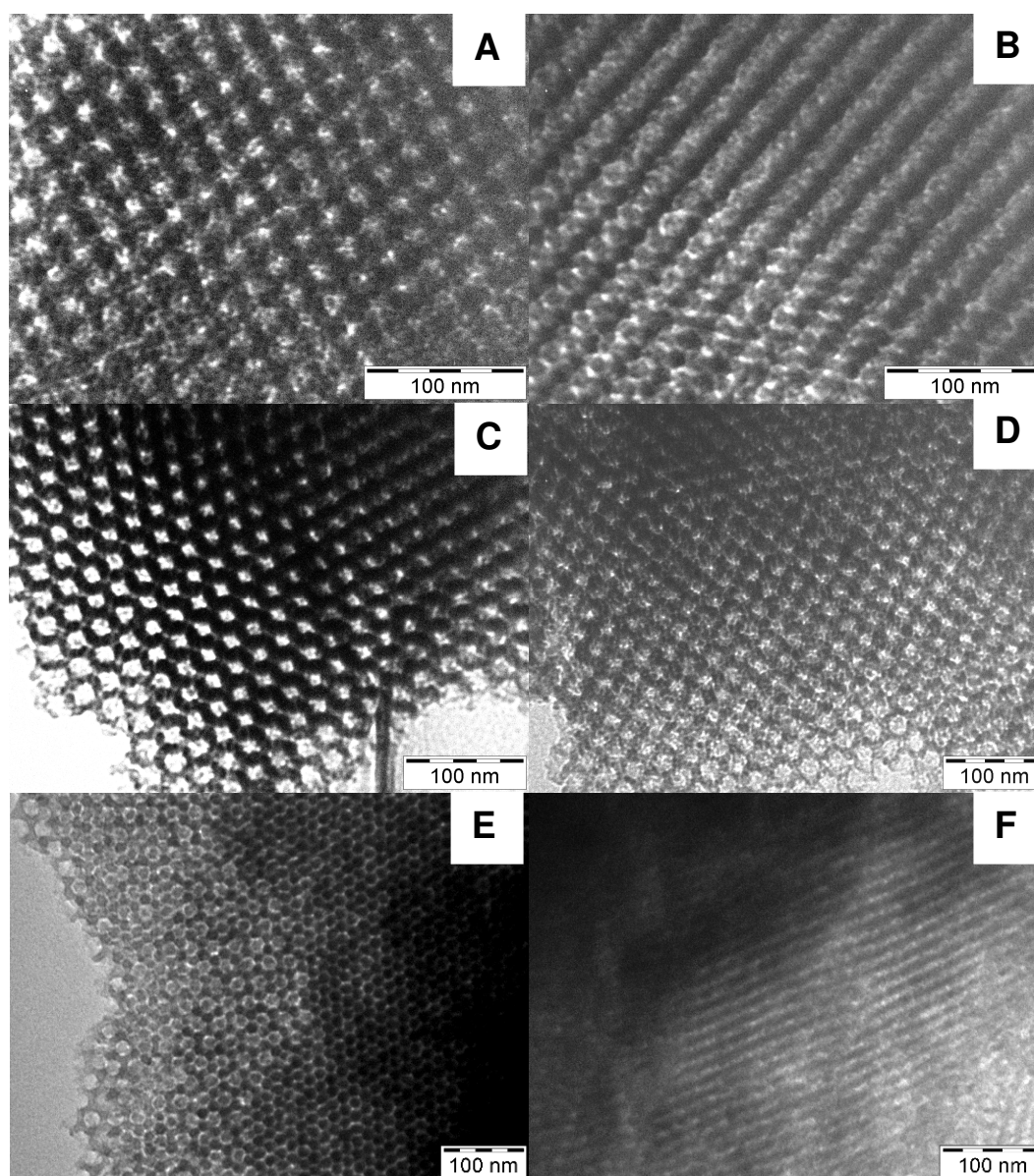


Supporting Information

Improving adsorbent properties of cage-like ordered amine functionalized mesoporous silica with very large pore for bio-adsorption

Sandy Budi Hartono, Shi Zhang Qiao*, Kevin Jack, Bradley P. Ladewig, Zhengping Hao and Gao Qing (Max) Lu*



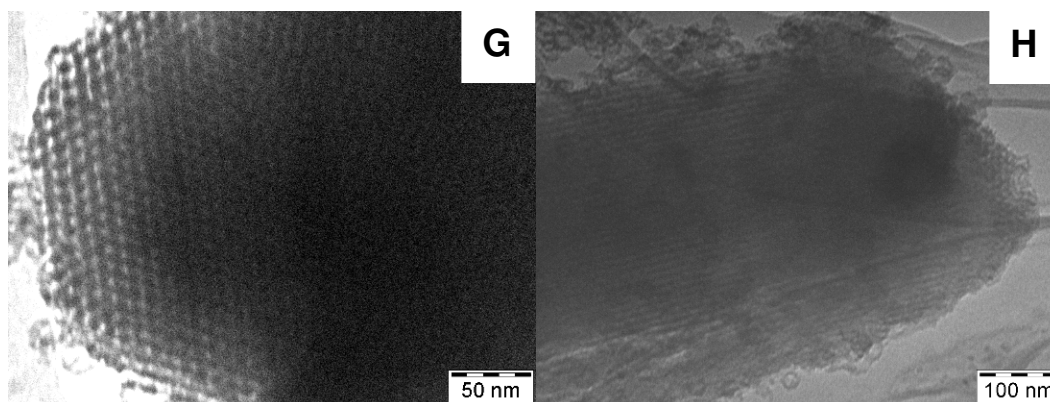


Figure S1 TEM images of Amine FDU-12 samples synthesized with different amount of APTES (A, B) APTES 15-160-1/20, (C, D) APTES 15-160-1/15, (E, F) APTES 15-160-1/10, (G, H) APTES 15-160-1/7.5

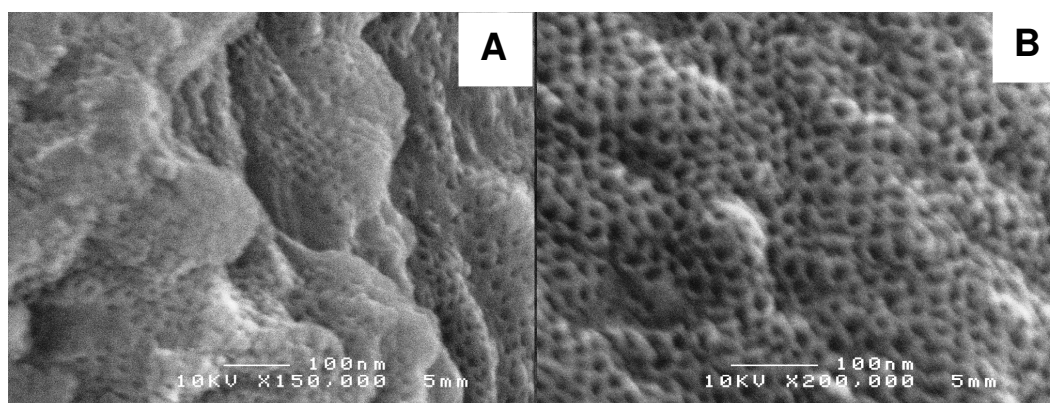


Figure S2 High resolution SEM images of (A) as-synthesized Amine FDU-12, and (B) Amine FDU-12 sample.