

Supplemental Information

Contents:

Supplemental Figure 1. Growth inhibition/stimulation of *B. cinerea* after 48 hrs and 72 hrs

Supplemental Figure 2. Growth inhibition/stimulation of *C. fragariae* after 48 hrs and 72 hrs

Supplemental Figure 3. Growth inhibition/stimulation of *C. gloesporioides* after 48 hrs and 72 hrs

Supplemental Figure 4. Growth inhibition/stimulation of *F. oxysporum* after 48 hrs and 72 hrs

Supplemental Figure 5. Growth inhibition/stimulation of *P. obscurans* after 120 hrs

Supplemental Figure 6. Growth inhibition/stimulation of *P. viticola* after 120 hrs

Supplemental Figure 7. Six point inhibition curve of *B. cinerea*

Supplemental Figure 8. Six point inhibition curve of *C. acutatum*

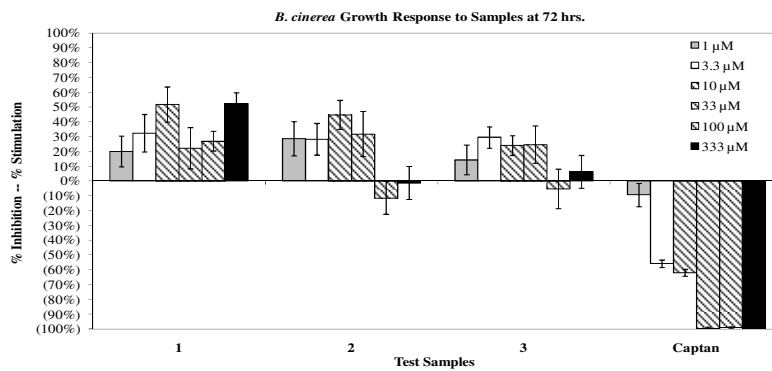
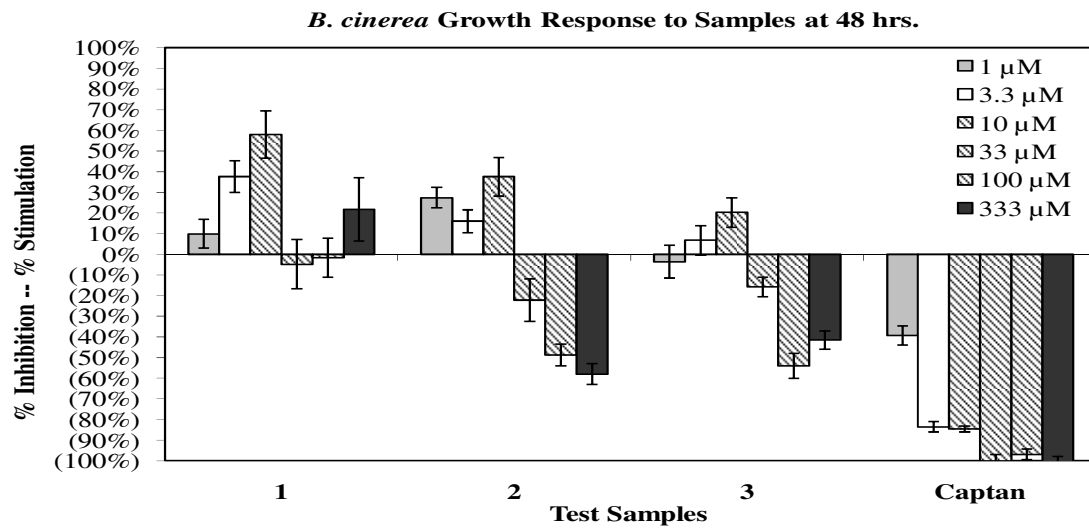
Supplemental Figure 9. Six point inhibition curve of *C. fragariae*

Supplemental Figure 10. Six point inhibition curve of *C. gloesporioides*

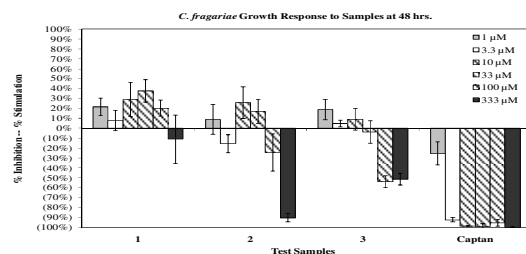
Supplemental Figure 11. Six point inhibition curve of *F. oxysporum*

Supplemental Figure 12. Six point inhibition curve of *P. obscurans*

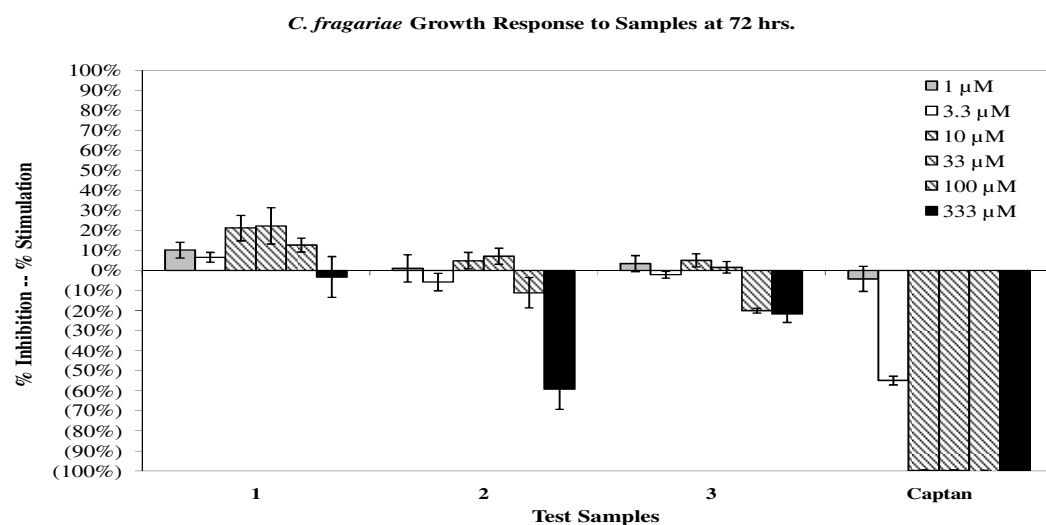
Supplemental Figure 13. Six point inhibition curve of *P. viticola*



Supplemental Figure 1. Growth inhibition/stimulation of *B. cinerea* after 48 hrs and 72 hrs using 96-well microtiter format in a dose-response to **1**, **2**, **3** and the commercial fungicide standard captan. Means from percent growth inhibition/stimulation were pooled from two experiments replicated in time.



42



43

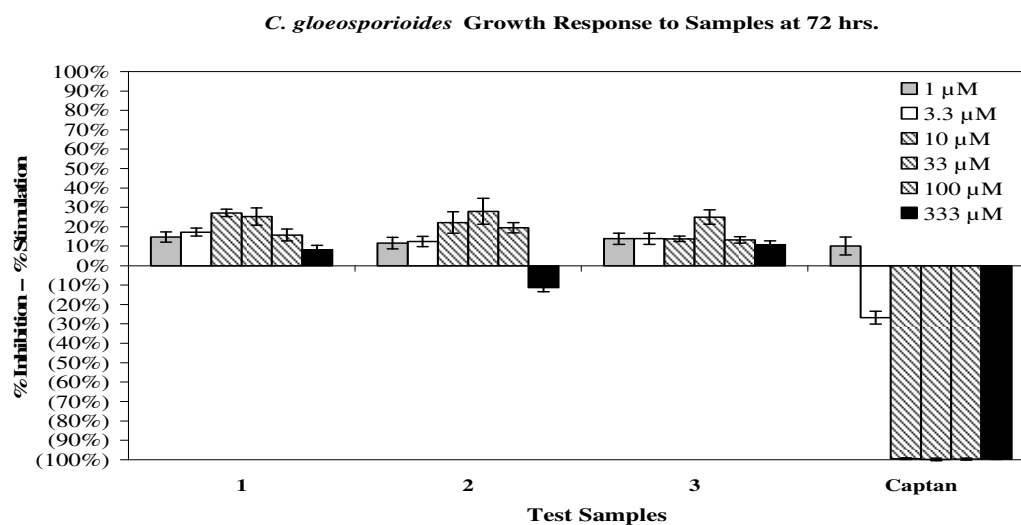
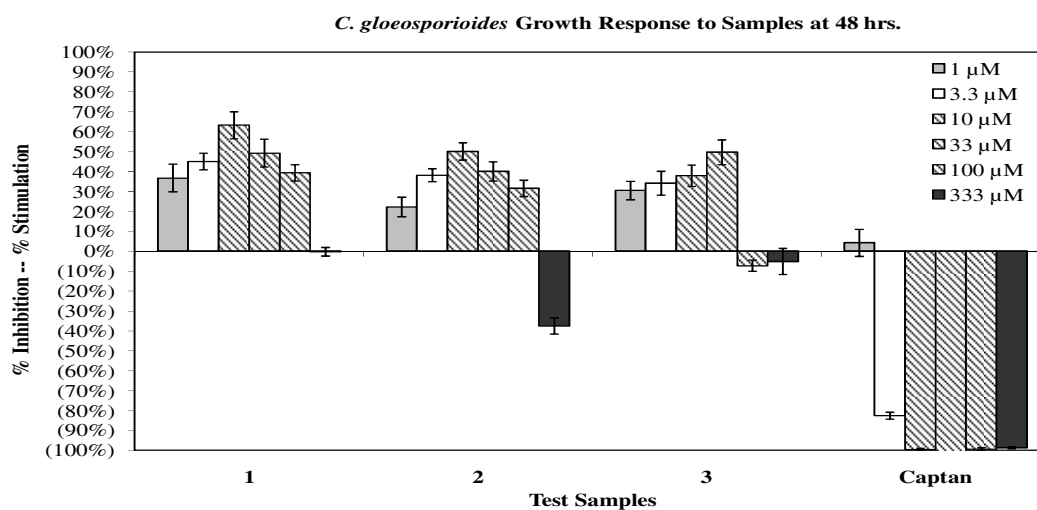
44 **Supplemental Figure 2.** Growth inhibition/stimulation of *C. fragariae* after 48 hrs and 72 hrs

45 using 96-well microtiter format in a dose-response to **1, 2, 3** and the commercial fungicide

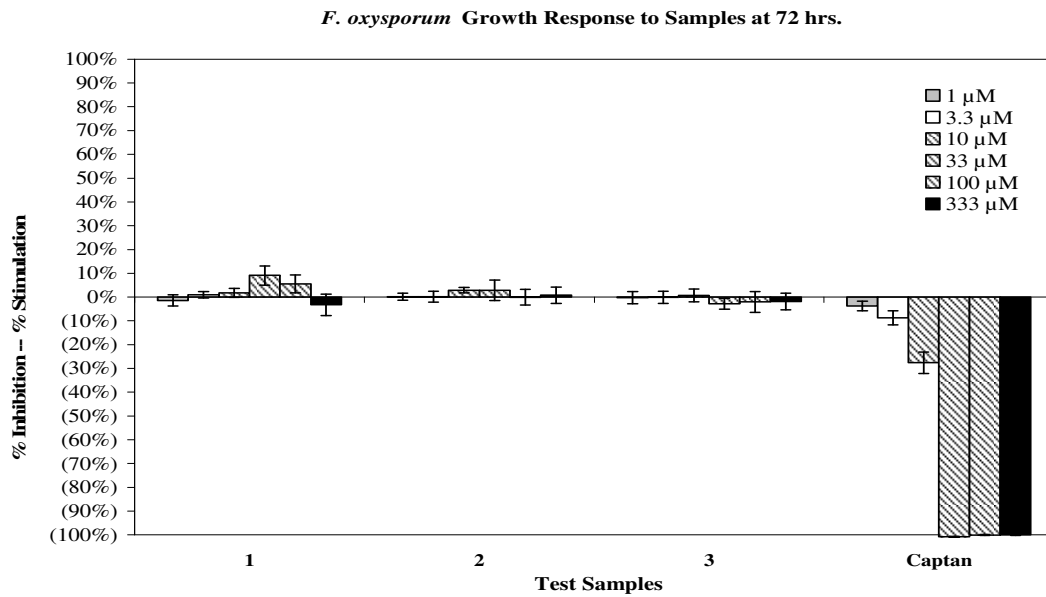
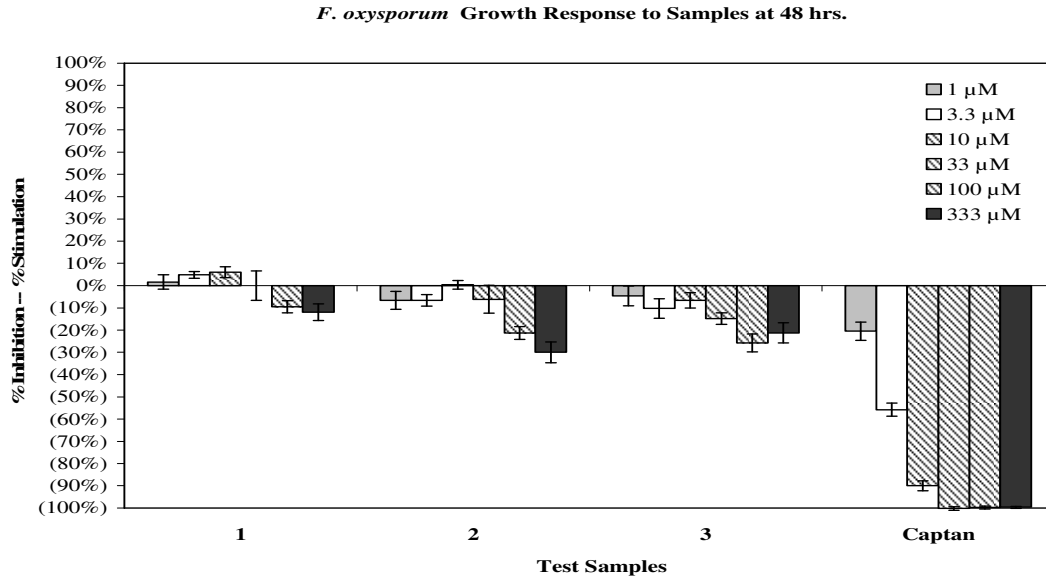
46 standard captan. Means from percent growth inhibition/stimulation were pooled from two

47 experiments replicated in time.

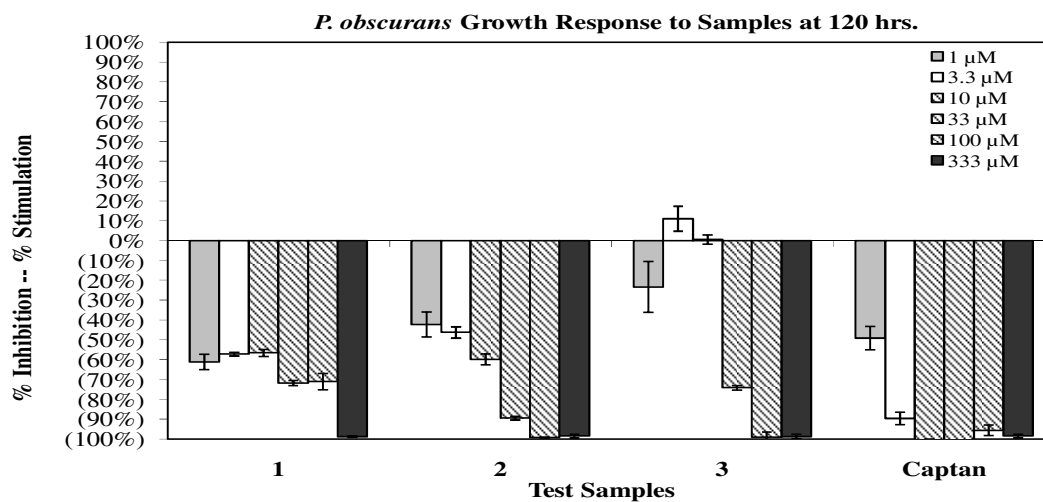
48



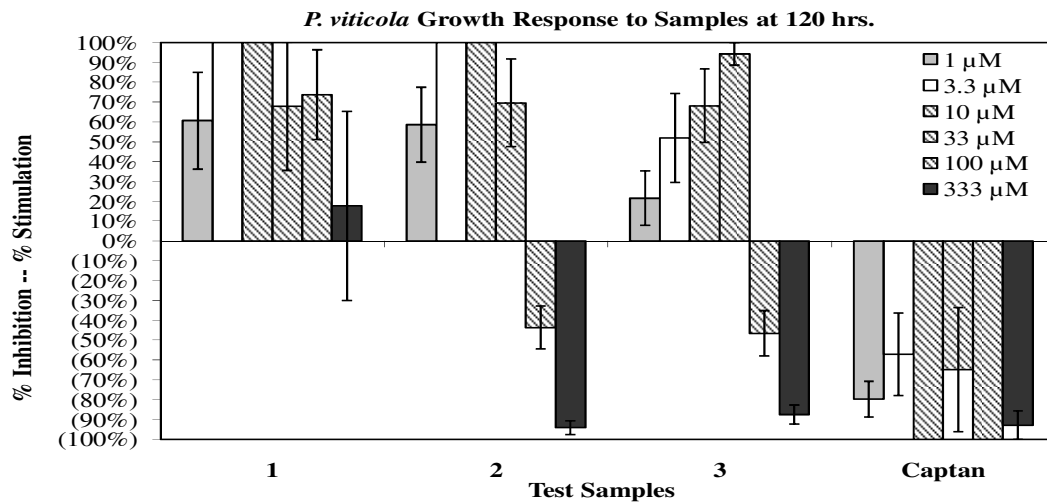
Supplemental Figure 3. Growth inhibition/stimulation of *C. gloeosporioides* after 48 hrs and 72 hrs using 96-well microtiter format in a dose-response to **1**, **2**, **3** and the commercial fungicide standard captan. Means from percent growth inhibition/stimulation were pooled from two experiments replicated in time.



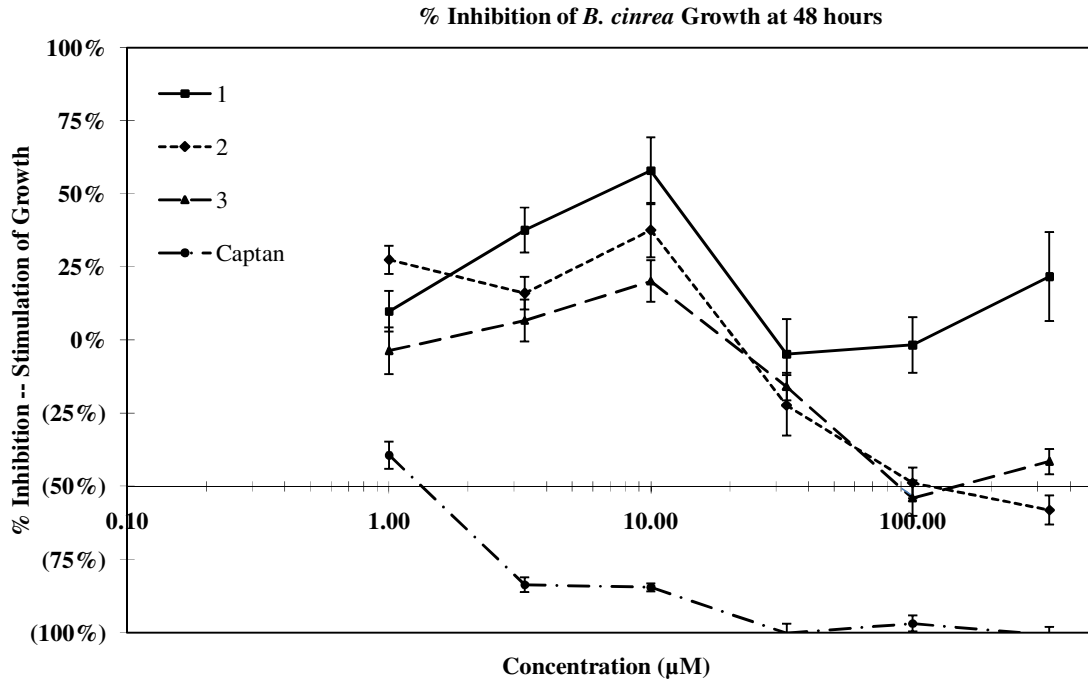
Supplemental Figure 4. Growth inhibition/stimulation of *F. oxysporum* after 48 hrs and 72 hrs using 96-well microtiter format in a dose-response to **1**, **2**, **3** and the commercial fungicide standard captan. Means from percent growth inhibition/stimulation were pooled from two experiments replicated in time.



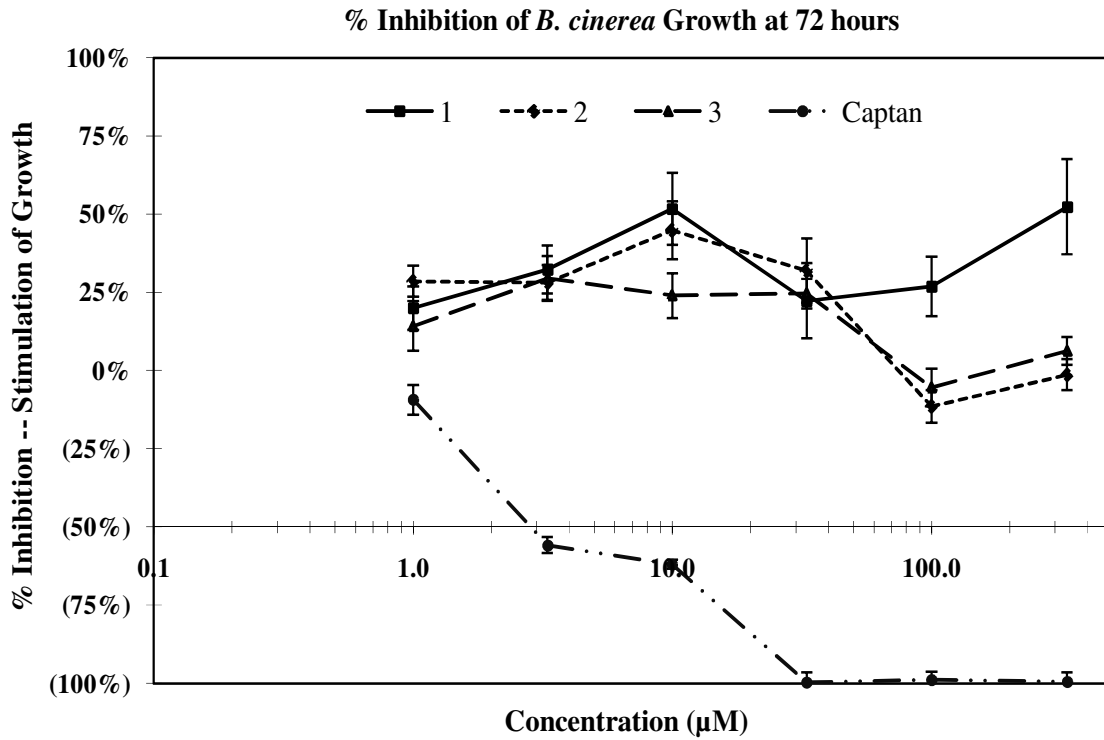
Supplemental Figure 5. Growth inhibition/stimulation of *P. obscurans* after 120 hrs using 96-well microtiter format in a dose-response to **1, 2, 3** and the commercial fungicide standard captan. Means from percent growth inhibition/stimulation were pooled from two experiments replicated in time.



Supplemental Figure 6. Growth inhibition/stimulation of *P. viticola* after 120 hrs using 96-well microtiter format in a dose-response to **1, 2, 3** and the commercial fungicide standard captan. Means from percent growth inhibition/stimulation were pooled from two experiments replicated in time.



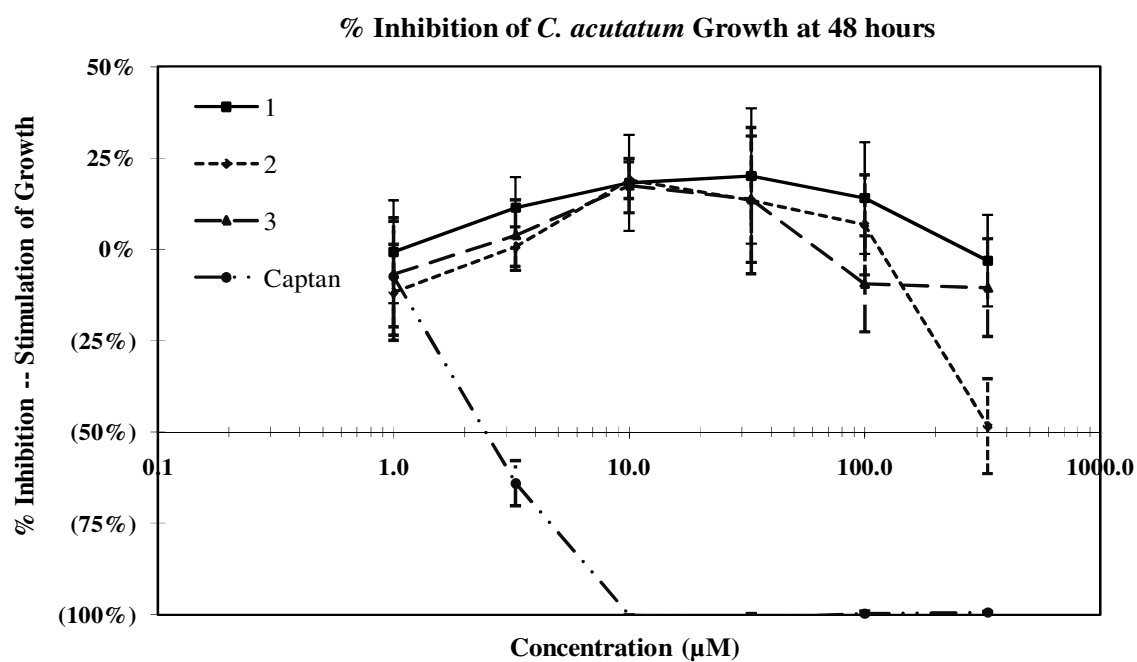
95



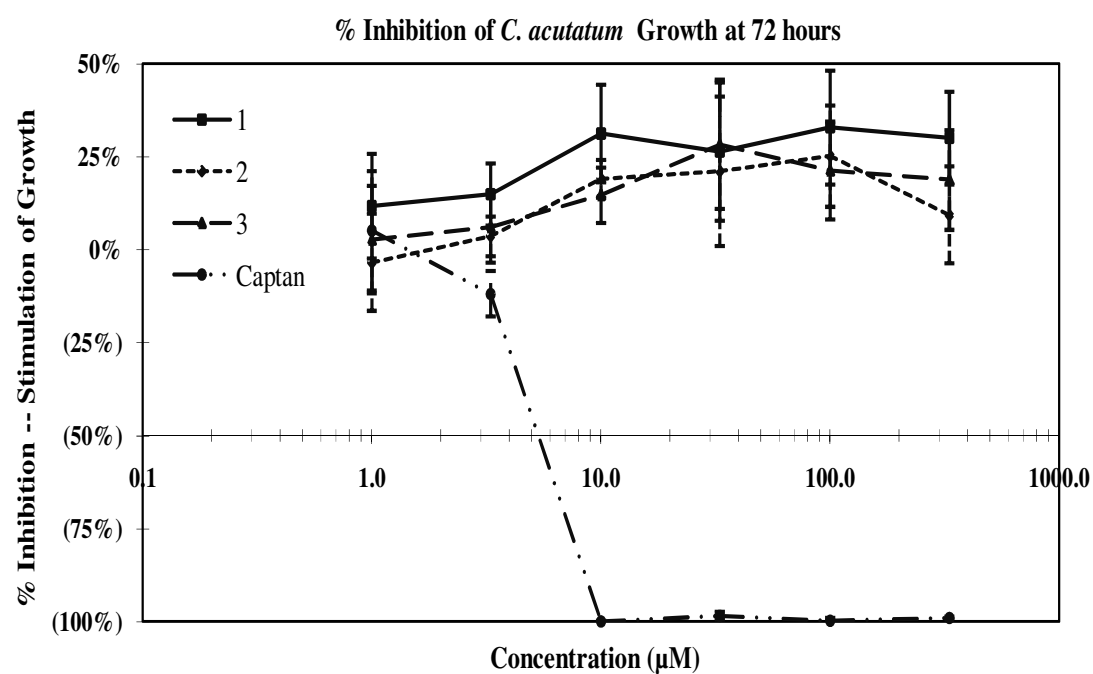
96

97

Supplemental Figure 7. Six point inhibition curve of *B. cinerea* after 48 and 72 hrs.

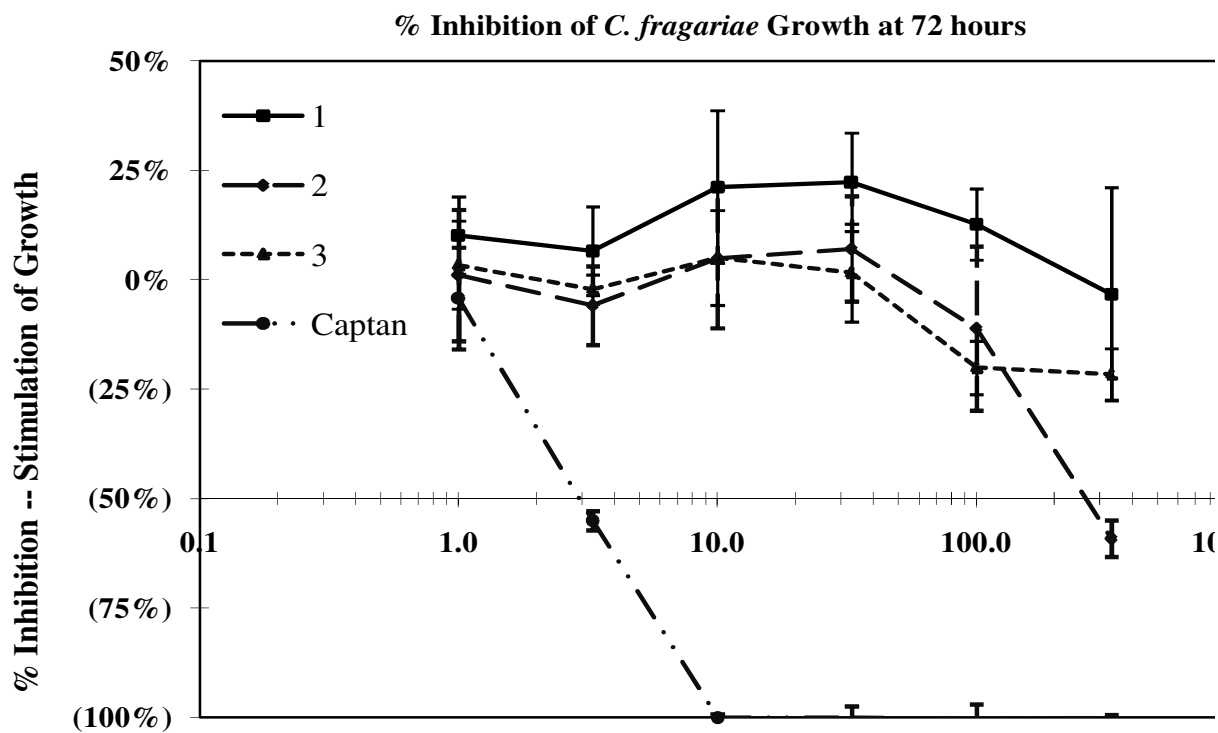
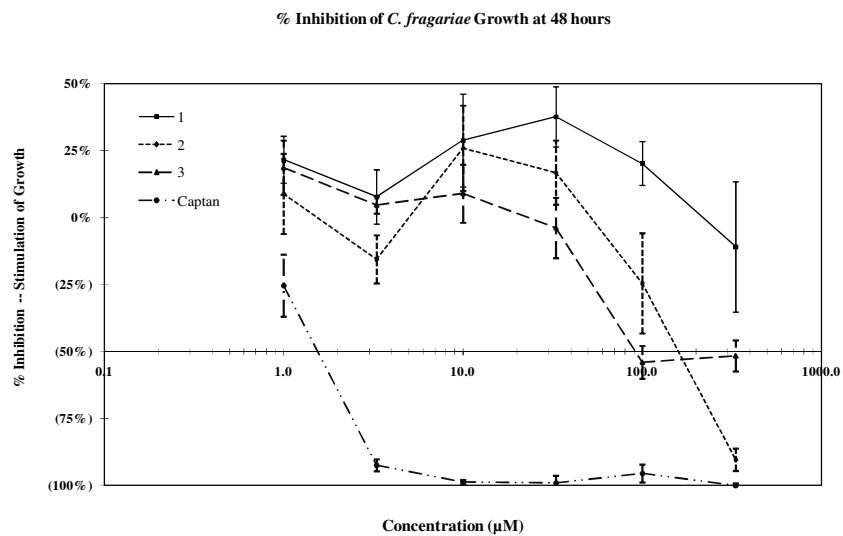


98

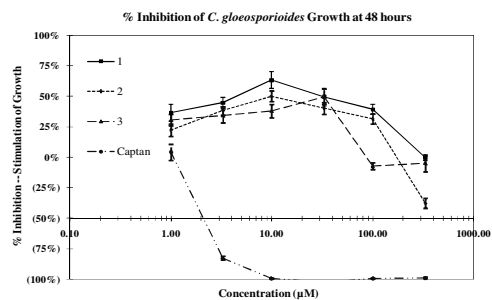


99
100 **Supplemental Figure 8.** Six point inhibition curve of *C. acutatum* after 48 and 72 hrs.

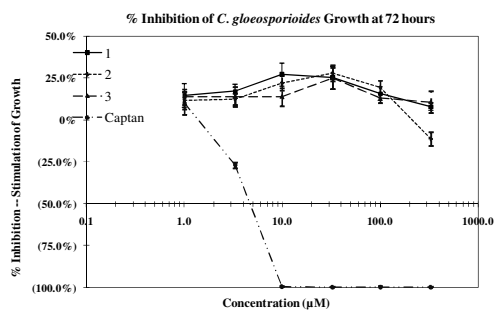
101



Supplemental Figure 9. Six point inhibition curve of *C. fragariae* after 48 and 72 hrs.



106

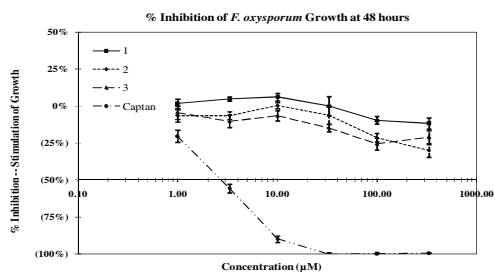


107

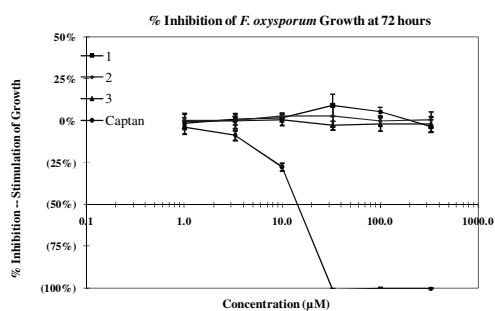
108

109

Supplemental Figure 10. Six point inhibition curve of *C. gloeosporioides* after 48 and 72 hrs.



110

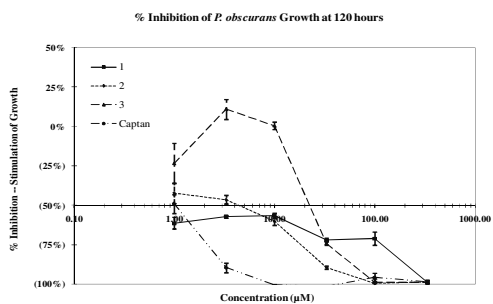


111

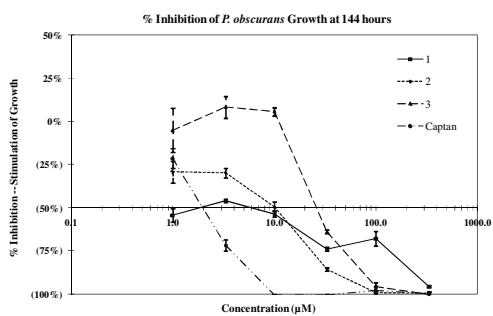
112

113 **Supplemental Figure 11.** Six point inhibition curve of *F. oxysporum* after 48 and 72 hrs.

114



115

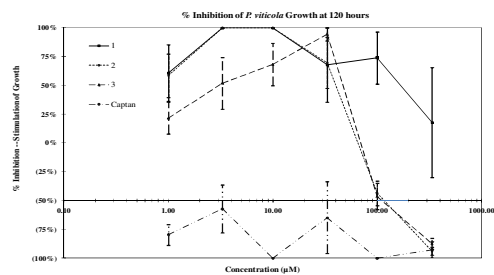


116

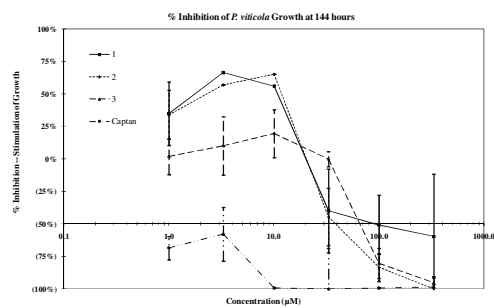
117

118

Supplemental Figure 12. Six point inhibition curve of *P. obscurans* after 120 and 144 hrs.



119



120

121

122

Supplemental Figure 13. Six point inhibition curve of *P. viticola* after 120 and 144 hrs.