

Supporting Information

Single Cell Analysis using Drop-on-demand Inkjet Printing and Probe

Electrospray Ionization Mass Spectrometry

Fengming Chen,[†] Yao Lu Lin,[†] Jie Zhang,[†] Ziyi He,[†] Katsumi Uchiyama,[‡] and Jin-Ming Lin,^{†,§}

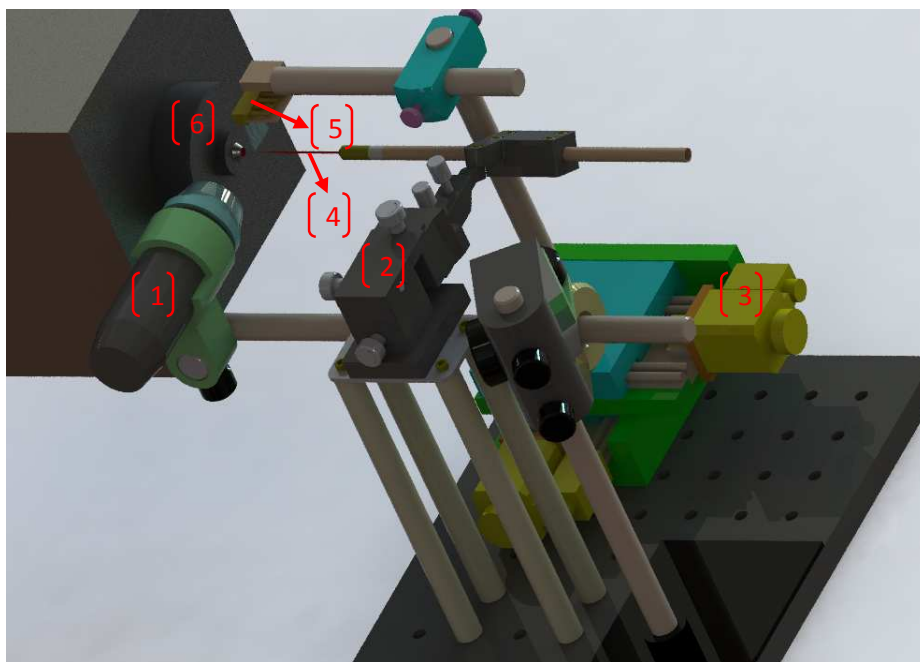
*

[†]Department of Chemistry, Beijing Key Laboratory of Microanalytical Methods and Instrumentation, The Key Laboratory of Bioorganic Phosphorus Chemistry & Chemical Biology, Tsinghua University, Beijing 100084, China

[‡] Department of Applied Chemistry, Graduate School of Urban Environmental Sciences, Tokyo Metropolitan University, Minamiohsawa, Hachioji, Tokyo 192-0397, Japan

[§]Collaborative Innovation Center of Functionalized Probes for Chemical Imaging in University of Shandong, Shandong Normal University, Jinan 250014, China

17 1.Single-cell-manipulator system for inkjet printing.

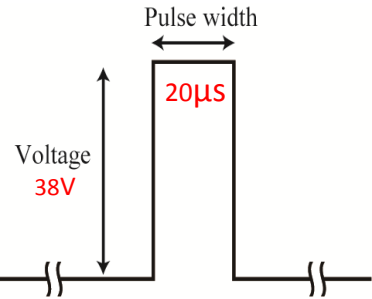


18

19 Fig. S1. Single-cell-manipulator system for inkjet printing single-cells consists of (1)image capture device, a
20 digital microscope focused on the tungsten tip showing the cell ESI approaching to the MS nozzle orifice, (2)
21 manual XYZ platform, (3) automatic XY platform, (4) tungsten, (5) inkjet chip, (6) MS detector.

22

23 2. Optimization of the inkjet driving waveform for drop on demand.



24
25 Fig. S2. Optimization of the inkjet driving waveform
26

27

3. Optimized cell distribution for single-cell dispensing experiment.

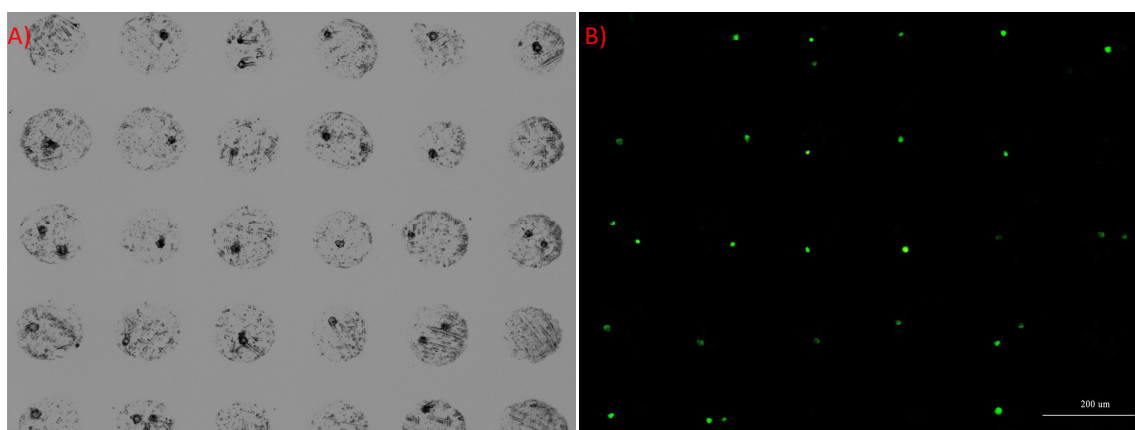
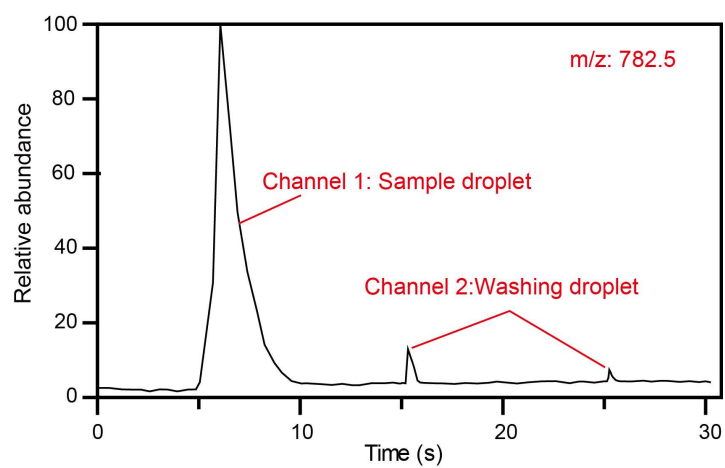


Figure S3. A) Optimized cell distribution for single-cell dispensing experiment. Cell array formed on glass slides with 200 μ m spacing between each single cell. and, B) Fluorescence images of cell array, stained by the Calcein-AM assay for viability test. Scale bar 200 μ m.

31

32 4. The analysis/washing cycle in mass spectra

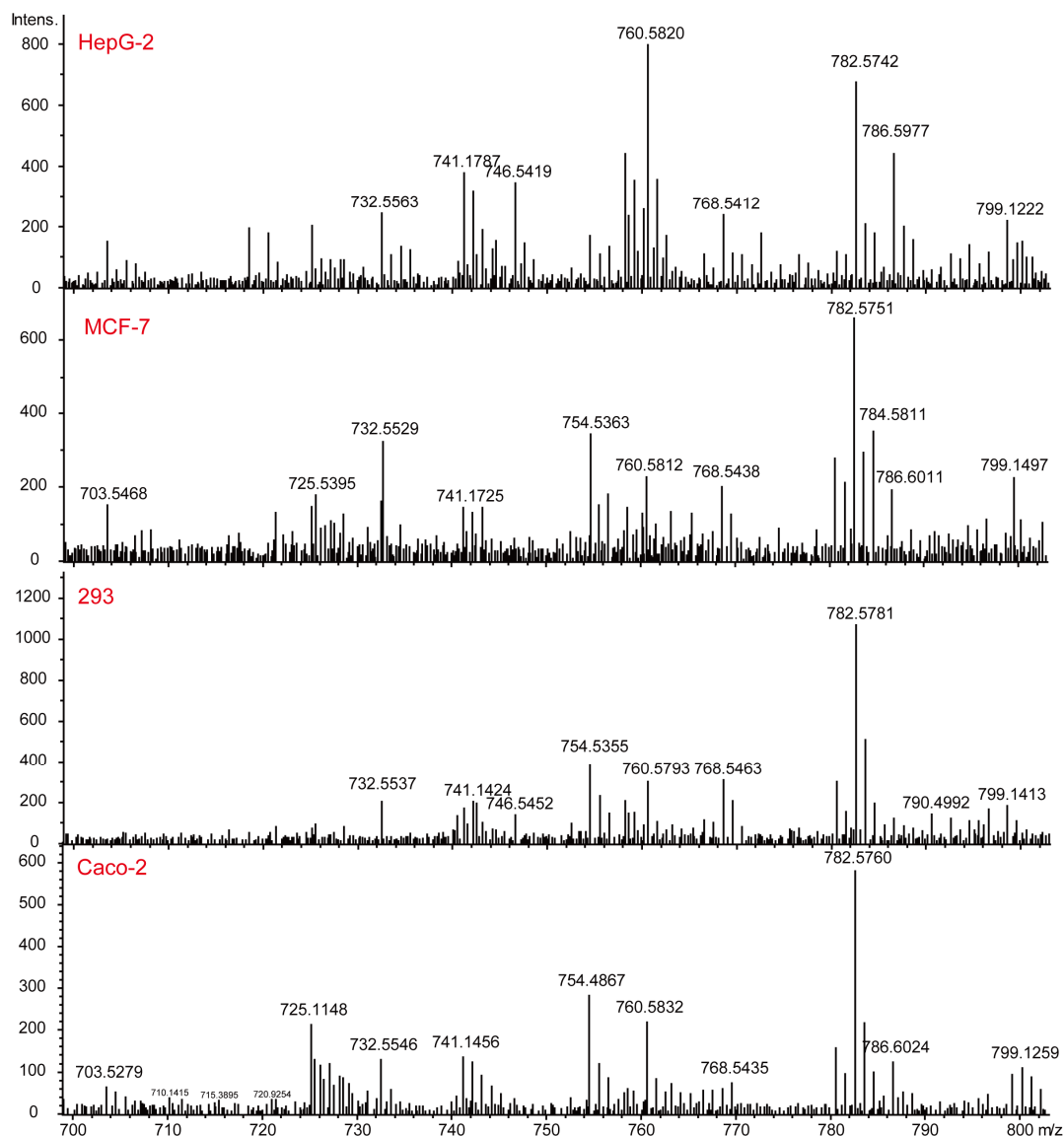


33

34 Figure S4. The analysis/washing cycle in mass spectra

35

36 5. Mass spectrum of U-87 cells, U251 cells, HepG2 cells, MCF-7 cells, 293 cells, Caco-2 cells,
37 HUVEC cells and 3T3 cells.



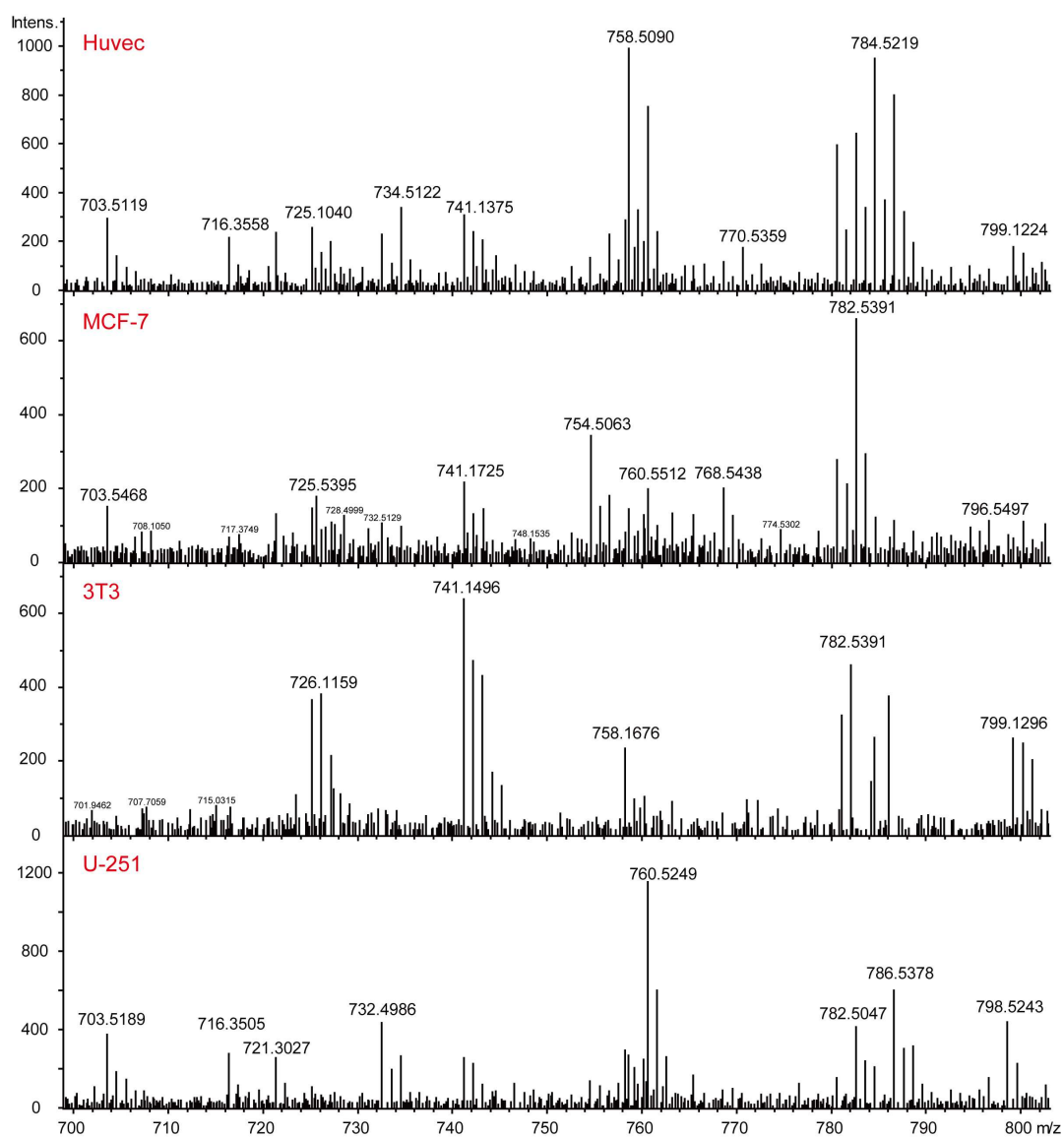
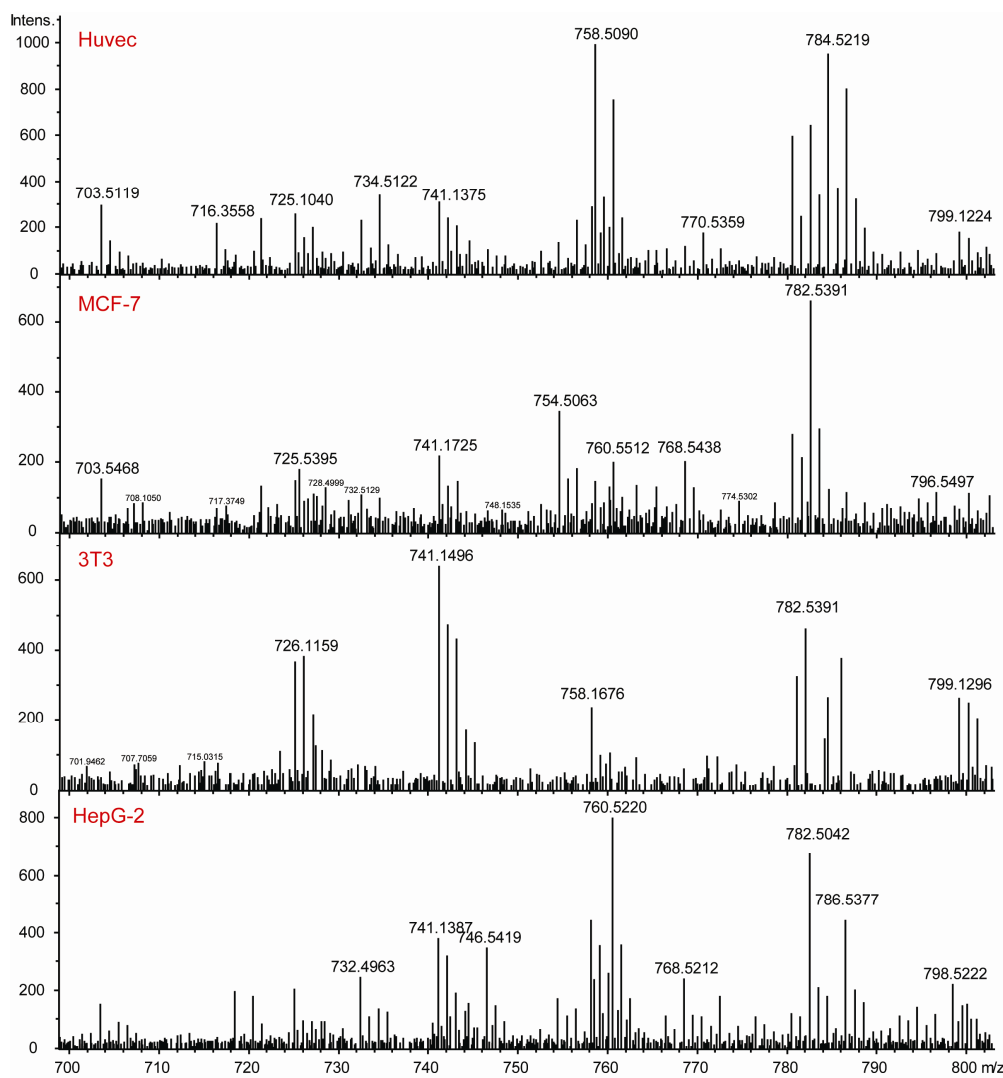


Figure S5. Mass spectrum of U-87 cells, U251 cells, HepG2 cells, MCF-7 cells, 293 cells, Caco-2 cells, HUVEC cells and 3T3 cells.

42 6. Mass spectrums of major phospholipids detected from different target cells.



43
44 **Figure S6.**Mass spectrumsofmajor phospholipids detected from different target cells.

45 Table S1. Optimization of inkjet printing droplets volumes.

Droplet number	1	2	5	10
Drop volume (pL)	486	972	2430	4860
Mass RSD% (N=10)	8.7	4.8	2.0	1.8

46

47