

Supporting Information

Photophysics and Photochemistry of Stilbene Containing Platinum Acetylides

Ksenija Haskins-Glusac, Ion Ghiviriga, Khalil A. Abboud and Kirk S. Schanze*

Department of Chemistry, University of Florida
PO Box, 117200, Gainesville, FL 32611-7200

* Author to whom correspondence should be addressed

TEL: 352-392-9133

FAX: 352-392-2395

e-mail: kschanze@chem.ufl.edu

Scheme S-1. Assignment of ^1H and ^{13}C NMR resonances for complex **2**. The spectrum was obtained with the sample dissolved in $\text{CDCl}_3/\text{C}_6\text{D}_6$ (2:1) solvent mixture.

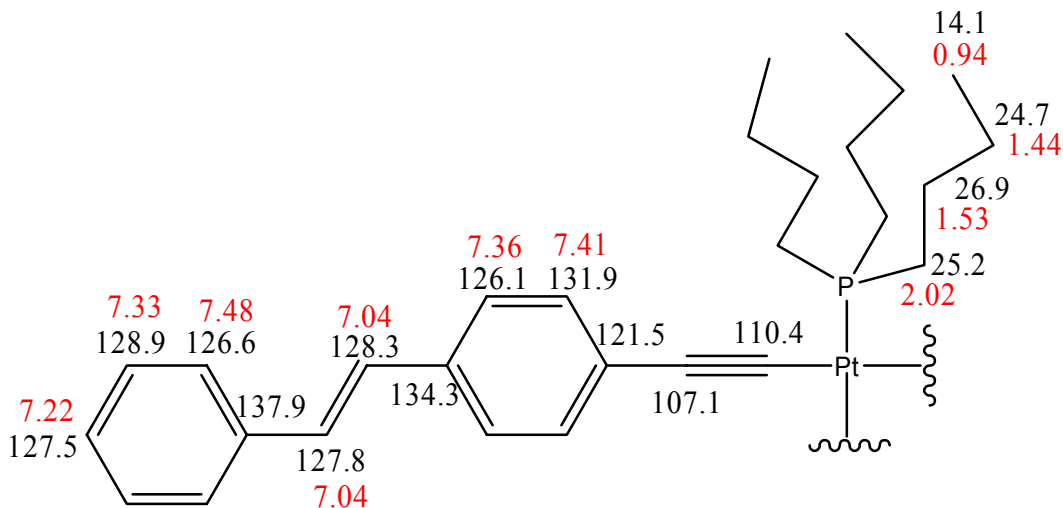
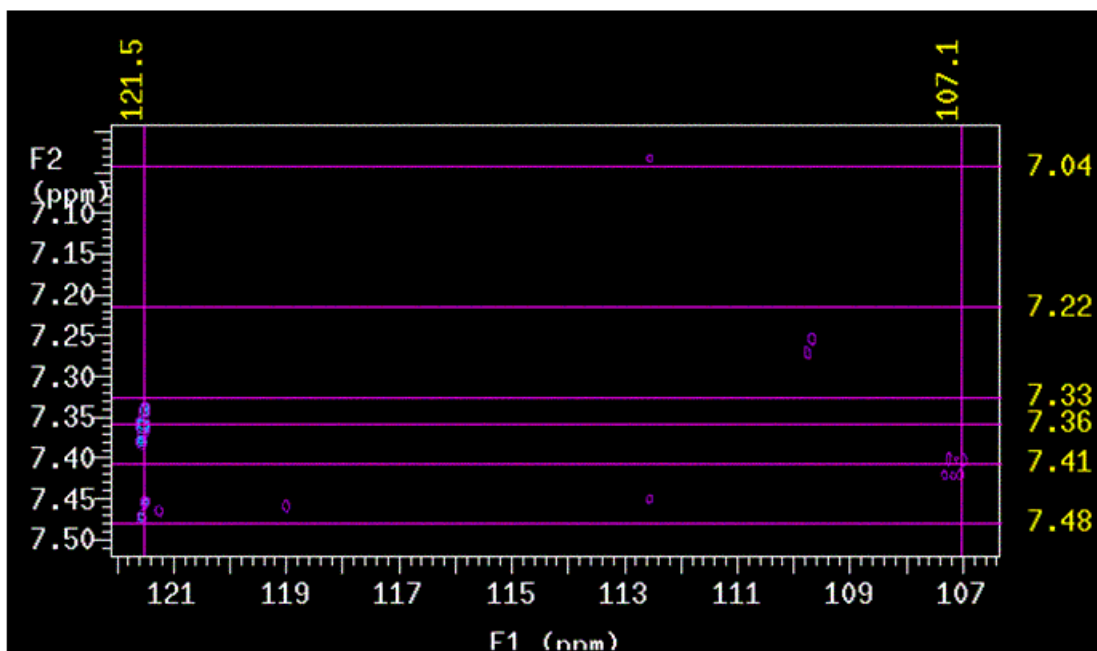


Figure S-1. Expansion of the ghmbc spectrum of complex **2**. (a) The expanded region includes spectra of ^{13}C atoms in the 107-121 ppm region and (b) the expanded region includes spectra of ^{13}C atoms in the 126-138 ppm region.

a)



b)

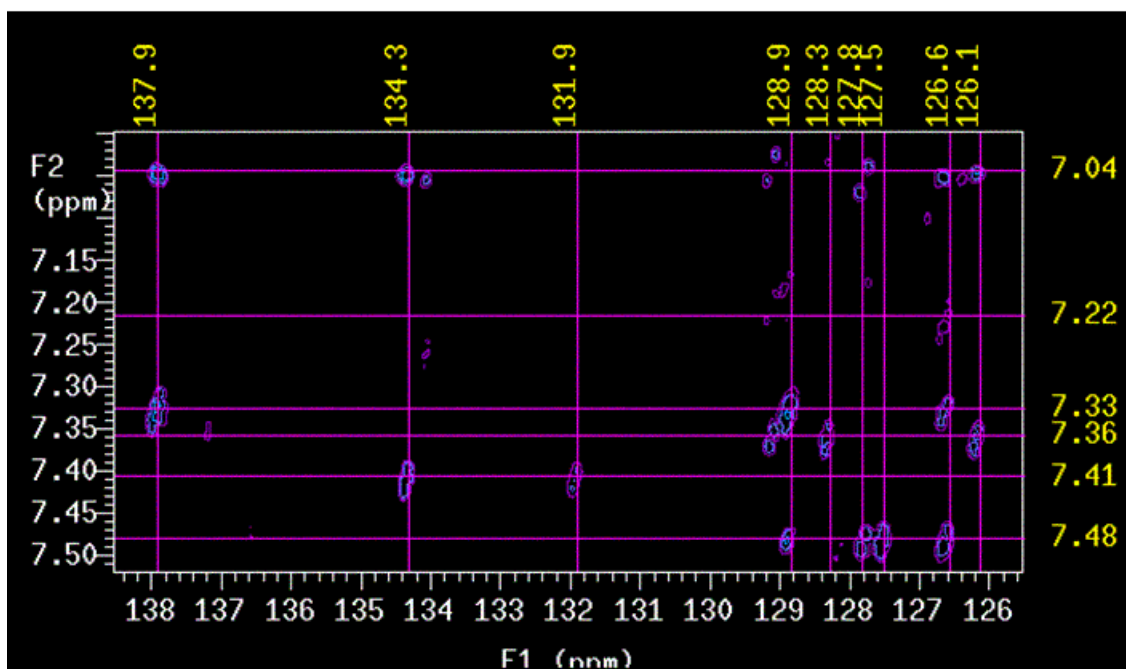


Figure S-S2. ghmqc spectrum of complex 2 with broadband ^{13}C decoupling.

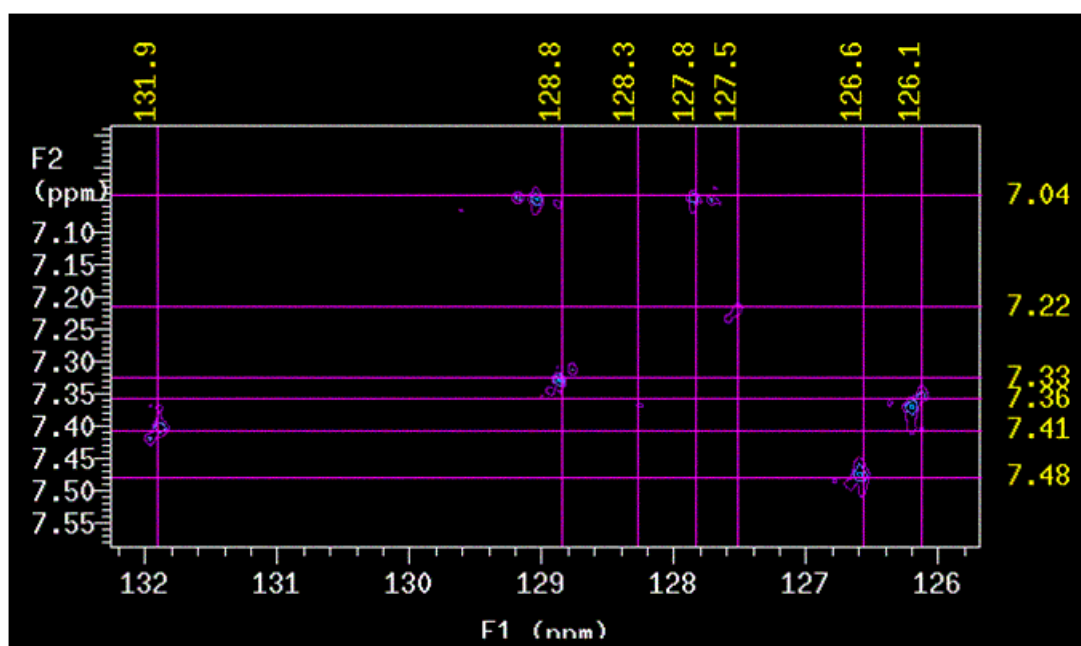


Figure S-3. dqcosy spectrum of complex 2.

