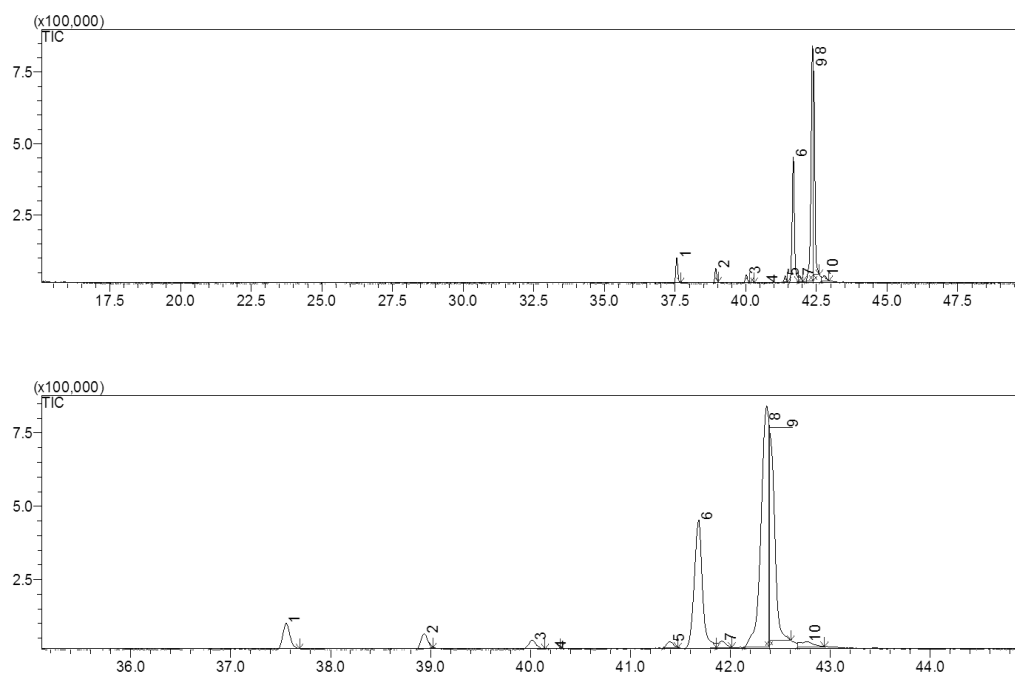


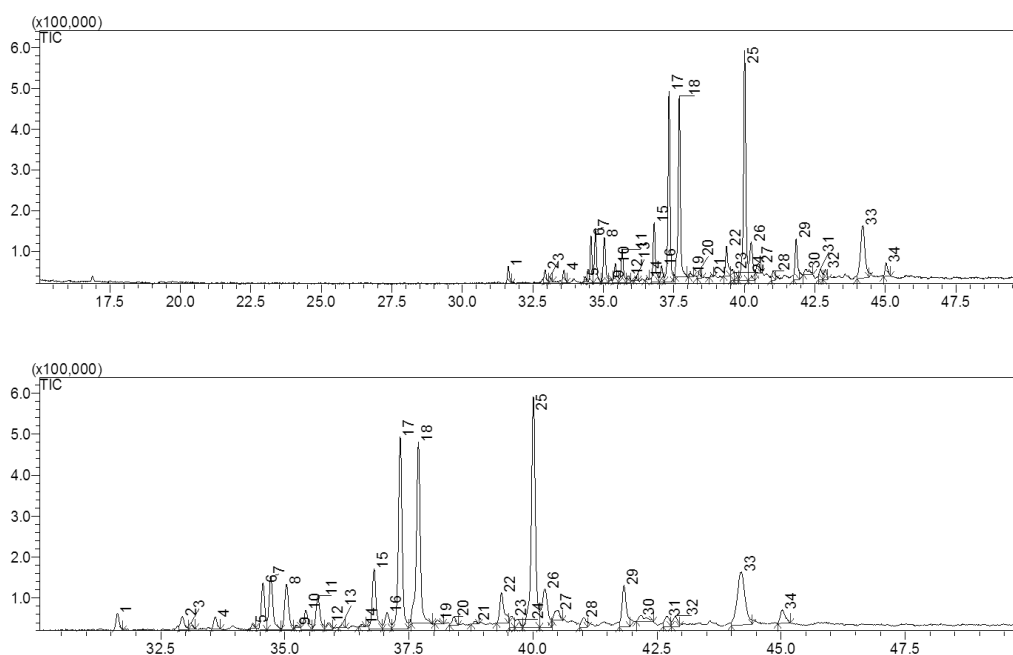
Annex

Figure 1. GC/MS total ion chromatogram (TIC) of the essential oil of *G. friesiana*



Identification of essential oil: 1 (unknown), 2 (elemol), 3 (spathulenol), 4 (caryophyllene oxide), 5 (10-epi- γ -eudesmol), 6 (γ -eudesmol), 7 (alloaromadendrene epoxide), 8 (β -eudesmol), 9 (α -eudesmol) and 10 (unknown).

Figure 2. GC/MS total ion chromatogram (TIC) of the essential oil of *G. pogonopus*



Identification of essential oil: 1 (α -ylangene), 2 (α -copaene), 3 (unknown), 4 (β -elemene), 5 (unknown), 6 ((Z)-caryophyllene), 7 ((E)-caryophyllene), 8 (γ -elemene), 9 (unknown), 10 (cis-muurolo-3,5-diene), 11 (spirolepechinene), 12 (unknown), 13 (unknown), 14 (unknown), 15 (γ -muurolene), 16 (unknown), 17 (germacrene D), 18 (γ -amorphene), 19 (bicyclogermacrene), 20 (γ -patchoulene), 21 (d-cadinene), 22 (germacrene B), 23 (unknown), 24 (unknown), 25 (spathulenol), 26 (caryophyllene oxide), 27 (globulol), 28 (unknown), 29 (alloaromadendrene epoxide), 30 (unknown), 31 (unknown), 32 (unknown), 33 (unknown) and 34 (unknown).