

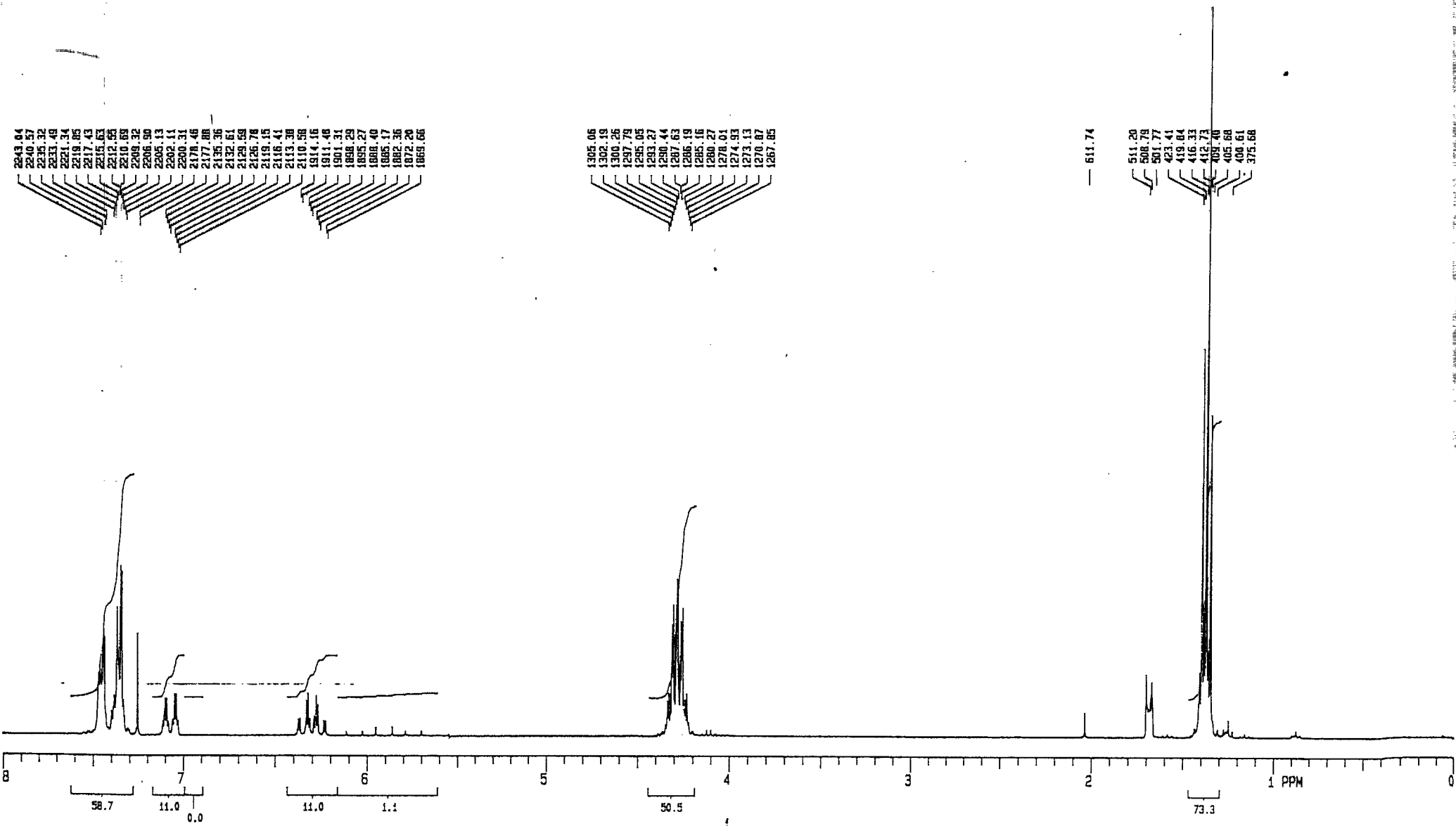
Terms & Conditions

Electronic Supporting Information files are available without a subscription to ACS Web Editions. The American Chemical Society holds a copyright ownership interest in any copyrightable Supporting Information. Files available from the ACS website may be downloaded for personal use only. Users are not otherwise permitted to reproduce, republish, redistribute, or sell any Supporting Information from the ACS website, either in whole or in part, in either machine-readable form or any other form without permission from the American Chemical Society. For permission to reproduce, republish and redistribute this material, requesters must process their own requests via the RightsLink permission system. Information about how to use the RightsLink permission system can be found at <http://pubs.acs.org/page/copyright/permissions.html>

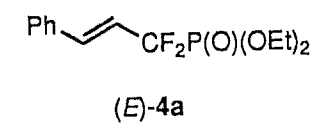


ACS Publications

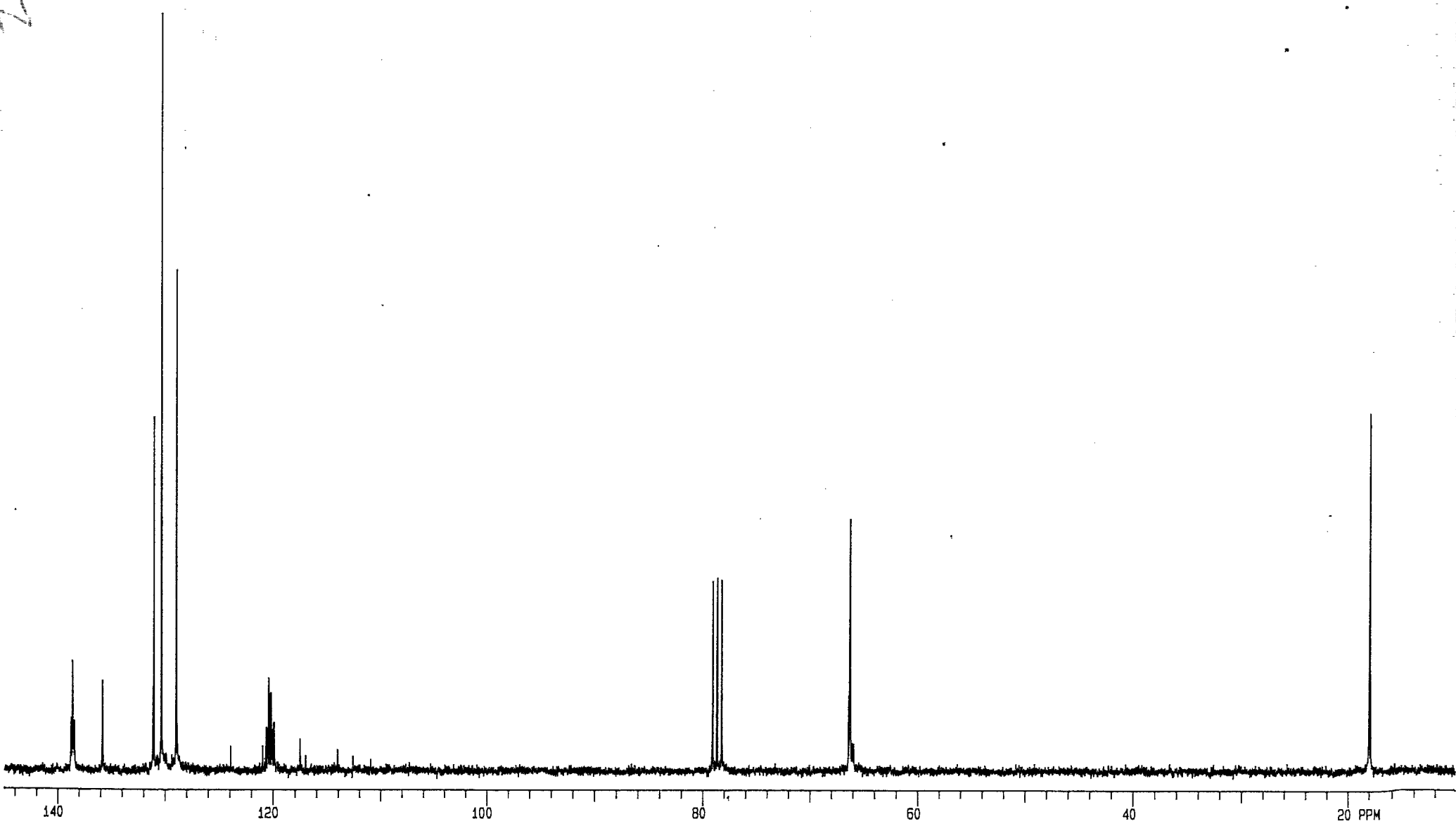
MOST TRUSTED. MOST CITED. MOST READ.



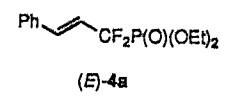
1.000	300	1.000	-450.0	32	---	---	S2PUL
4500.5	0	NMN	1800.0	---	---	---	
3.335	1.600	C	200	2400.6	0	---	
12.7	32		1.0				COCL3



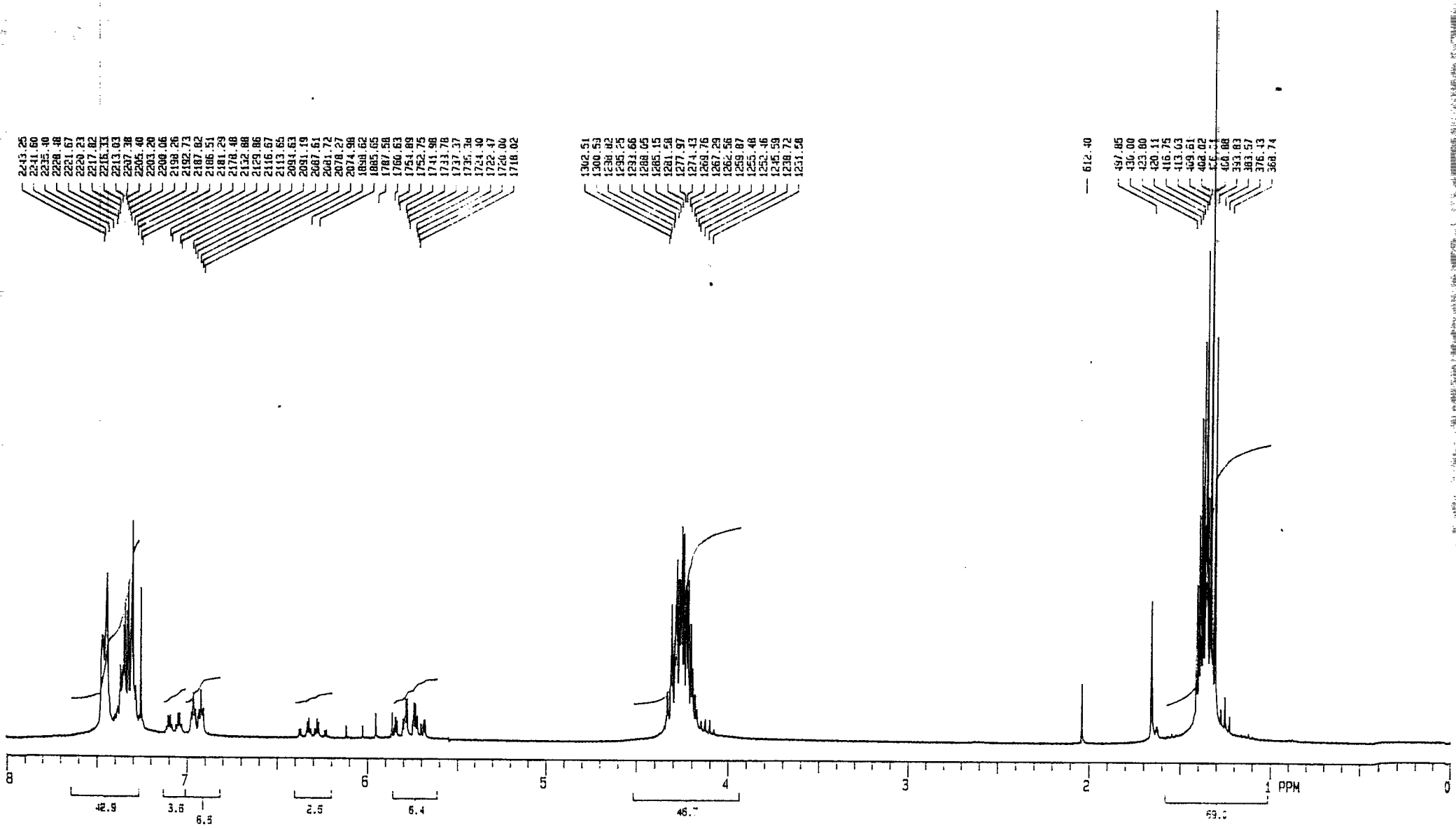
H
 01-04-95
 08:11:14
 GEM 300



13.000	75	1.000	-450.0	32	---	---	S2PUL
18781.7	0	YYY	20.0	1.000	---	---	
0.800	1.200	S	10200	10187.7	754.7	---	
9.3	320	25.0	1.0			CDCL3	



C
 05-08-96
 00:10:09
 SEM 300

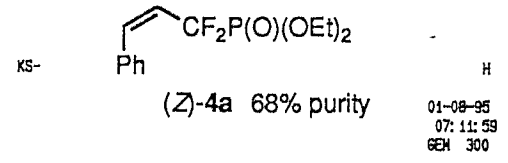


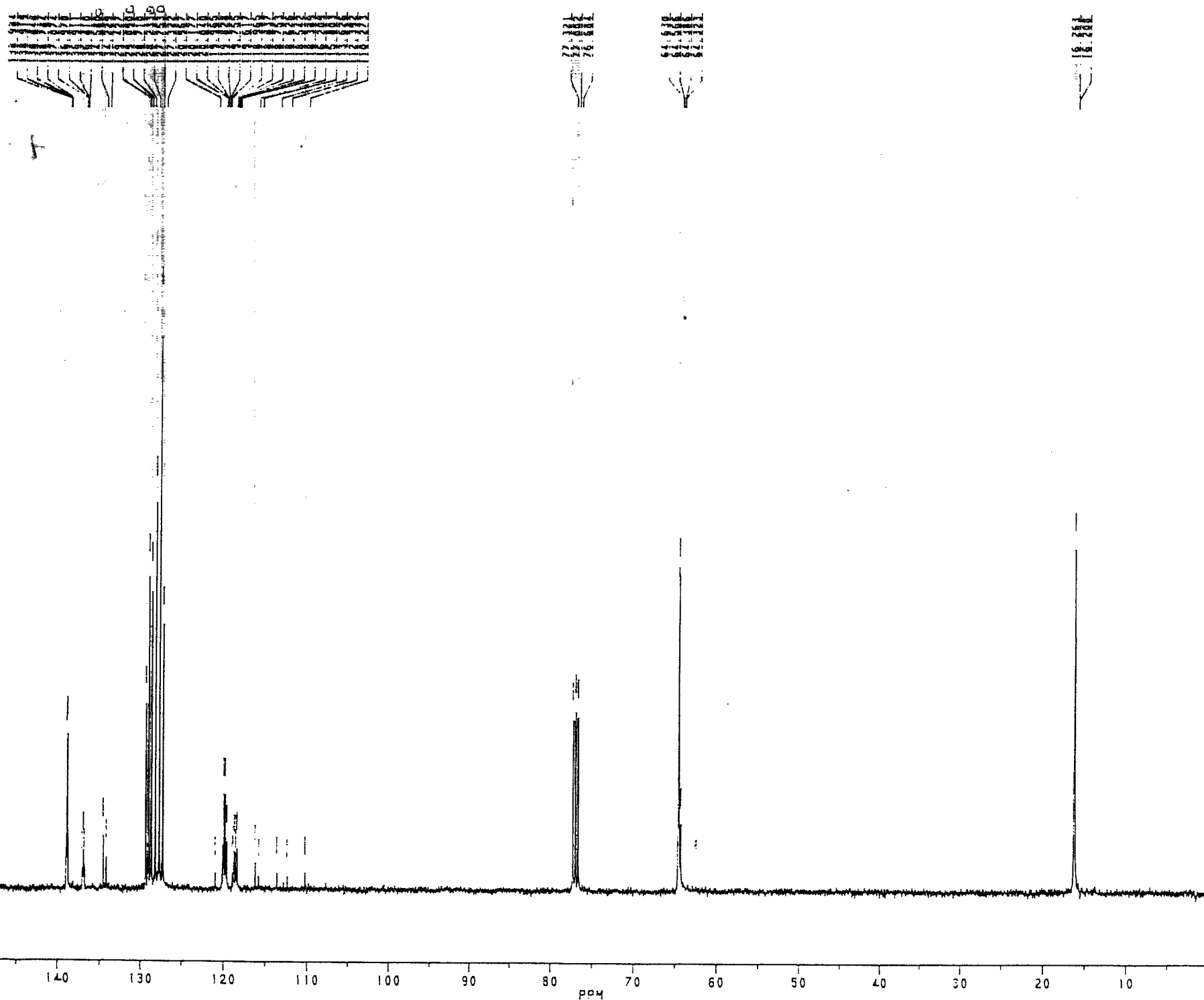
2443.25
2341.60
2325.40
2298.40
2231.67
2229.23
2217.82
2216.33
2213.03
2207.38
2205.40
2203.20
2200.06
2198.26
2192.73
2187.82
2185.51
2181.29
2178.46
2152.88
2129.86
2116.67
2113.65
2084.63
2081.19
2067.61
2061.72
2078.27
2074.98
1898.62
1885.65
1787.58
1760.63
1754.89
1752.75
1741.98
1733.78
1737.37
1735.39
1724.40
1722.47
1720.00
1716.02


1302.51
1300.59
1298.82
1295.25
1291.66
1288.05
1285.15
1281.58
1277.97
1274.43
1268.76
1267.29
1264.56
1259.87
1253.48
1252.46
1245.59
1236.72
1231.58

612.40
497.85
436.00
433.60
428.11
416.75
413.03
409.61
408.02
406.11
406.88
393.83
383.57
376.43
368.74

1.000	300	1.000	-450.0	32	---	---	S2PUL
4500.5	0	NNN	1800.0	---	---	---	KS-
3.335	1.600	C	200	2400.6	0	---	---
12.7	32		1.0				CDCL3






 BRUKER

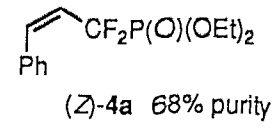
DHTA.007
 AU PROG.
 POWGATE.AU
 DATE 2'-55-2'

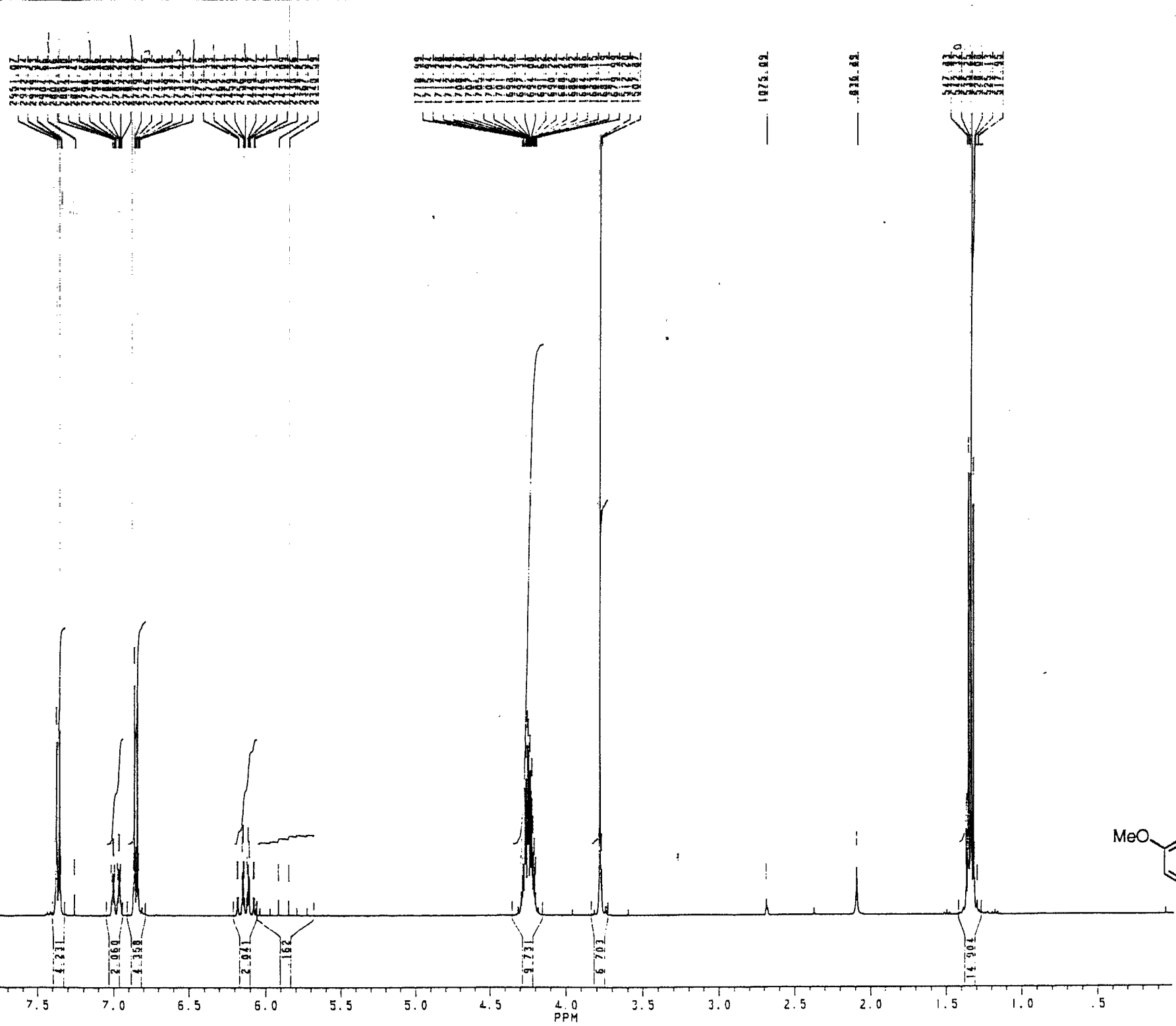
SF 100.614
 SY 74.8775000
 O1 5500.000
 SI 32768
 TD 32768
 SW 25000.000
 HZ/PT 1.526


PW 5.0
 RD 0.0
 AQ .655
 RO 800
 NS 366
 TE 297

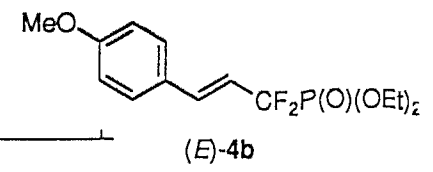
FW 31300
 O2 6500.000
 DP 16H 00

LB 2.000
 GB 0.0
 CX 35.00
 CY 0.0
 F1 150.008P
 F2 .004P
 HZ/CM 431.213
 PPM/CM 4.286
 SR -6118.42





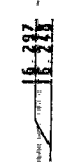
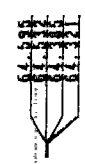
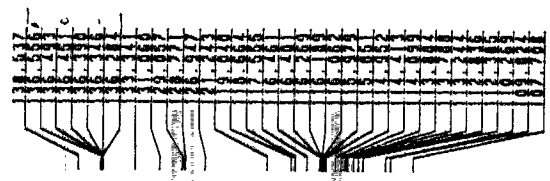

 OHTA.006
 SF 400.134
 SY 0.0
 QI 6200.000
 SI 32768
 TD 32768
 SW 5000.000
 HZ/P 305
 PW 5.0
 RD 0.0
 AQ 3.277
 RG 10
 NS 32
 TE 297
 FW 6300
 QZ -2000.000
 DP 63L PO
 LB 0.150
 OB 0.0
 CX 35.00
 CY 0.0
 F1 8.001P
 F2 0.000P
 HZ/CM 91.466
 PPM/CM 0.229
 SR 4394.27



160.622

160 150 140 130 120 110 100 90 80 70 60 50 40 30 20 10

PPM



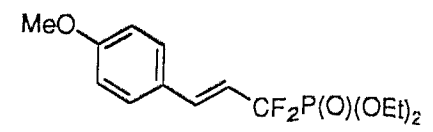
OHTA.006
 AU PROC
 POWGATE. AU

SF 100.614
 SY 74.8775000
 OI 5500.000
 SI 32768
 TD 32768
 SW 25000.000
 HZ/PT 1.526

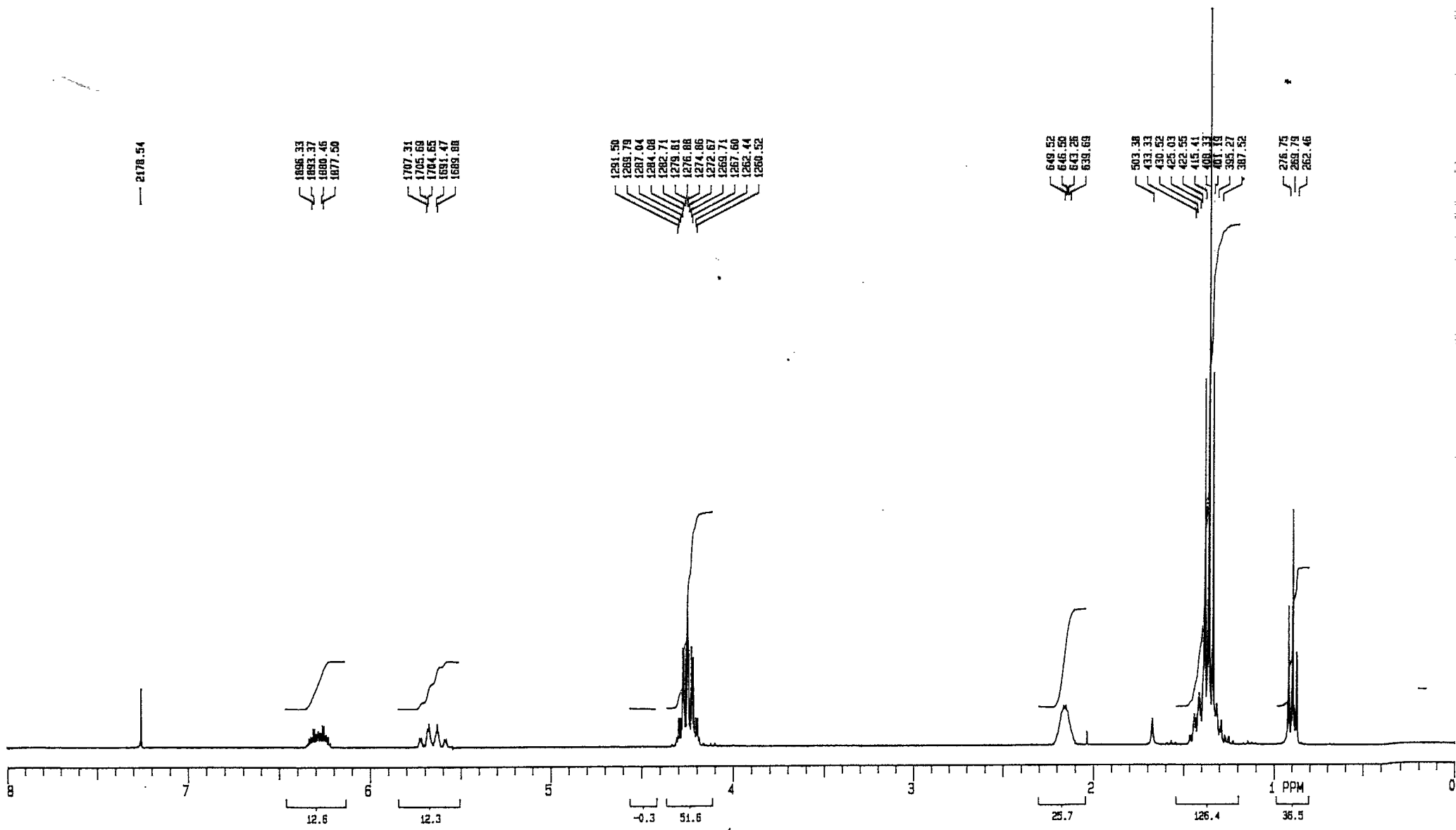
PW 5.0
 RD 0.0
 AQ .655
 RG 800
 NS 1656
 TE 297

FW 31300
 DZ 6500.000
 DP 16H DD

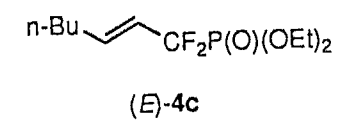
LB 2.000
 GB 0.0
 CX 35.00
 CY 0.0
 F1 170.011P
 F2 .004P
 HZ/CM 488.717
 PPM/CM 4.857
 SR -6118.42



(E)-4b

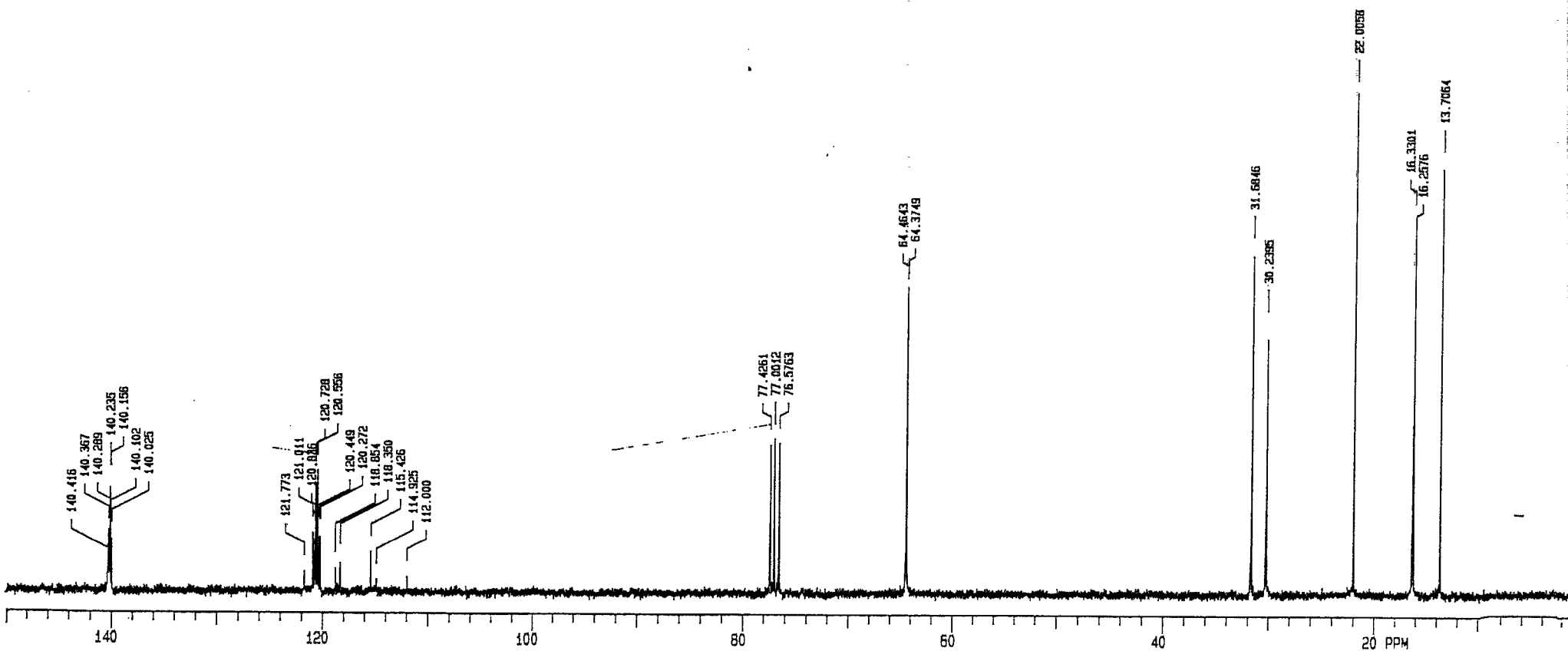


1.000	300	1.000	-450.0	32	—	—	S2PUL
4500.5	0	MNH	1800.0	—	—	—	
3.335	1.500	C	200	2400.6	0	—	
12.7	32		1.0				CDCL3



H

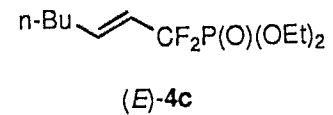
01-09-95
07:47:20
SEM 300



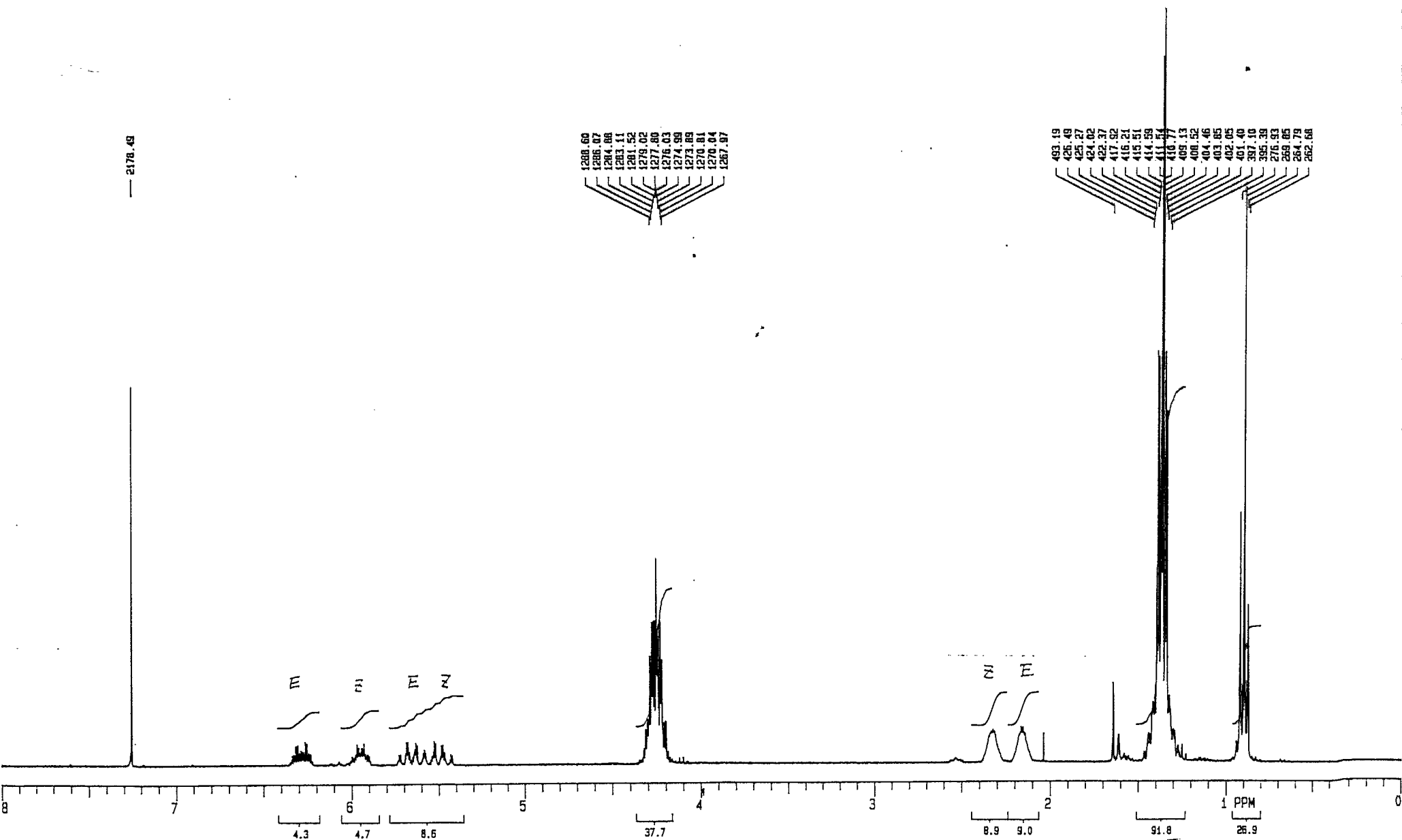
13.000	75	1.000	-450.0
18761.7	0	YY	20.0
0.800	0.200	S	9000
8.2	640	19.0	0.5

32	—	—
1.000	—	—
11319.1	0	

S2PUL
—
CDCl3



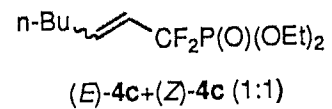
2178.49



1.000	300	1.000	-450.0	32	—	—
4500.5	0	NNN	1800.0	—	—	—
3.335	1.600	C	200	2400.6	0	—
11.8	16		1.0			

S2PUL

COCL3

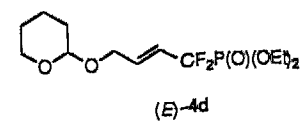
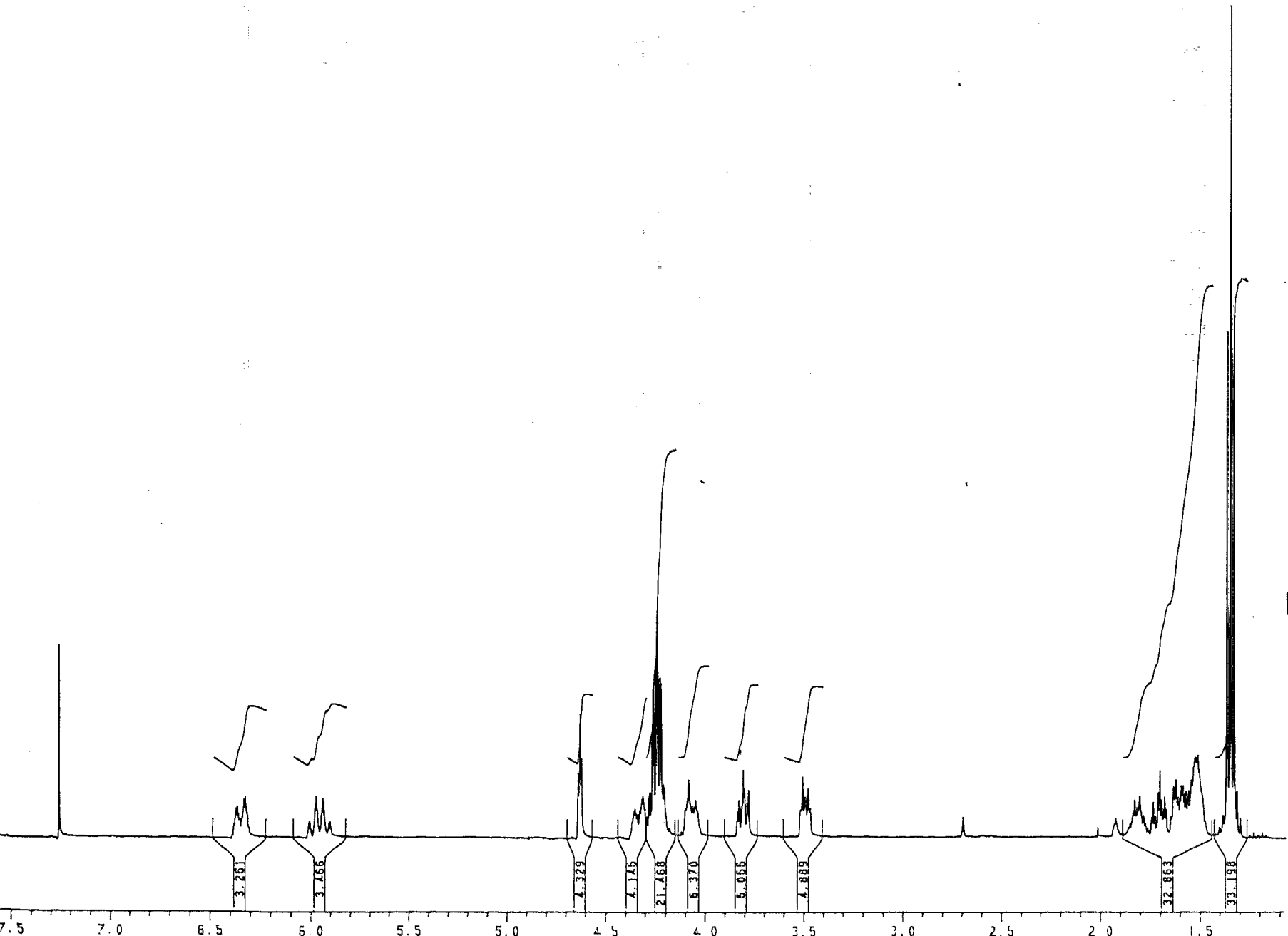


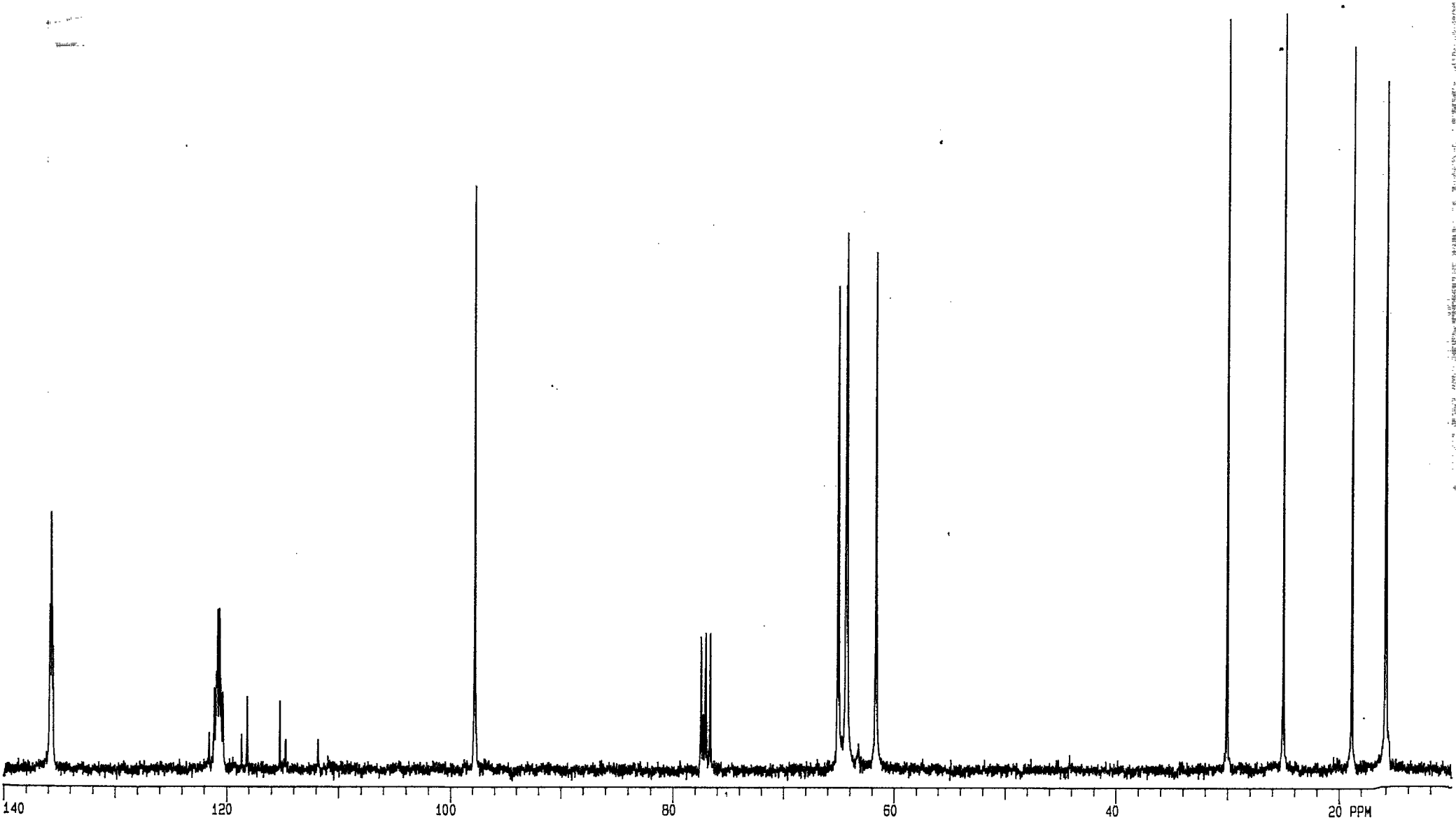
07-29-95
16:15:59
8EM 300

FM-2-1-2

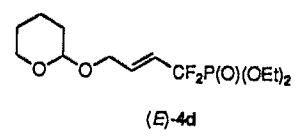
~~BRUKER~~

DHTA.007
DATE 30-5-'6
SF 400.134
SY 0.0
OI 6200.000
SI 32768
TD 32768
SW 5000.000
HZ/P1 .305
PW 5.0
RD 0.0
AQ 3.277
RG 32
NS 32
TE 297
FW 6300
O2 -2000.000
DP 63L PD
LB .150
GB 0.0
CX 35.00
CY 0.0



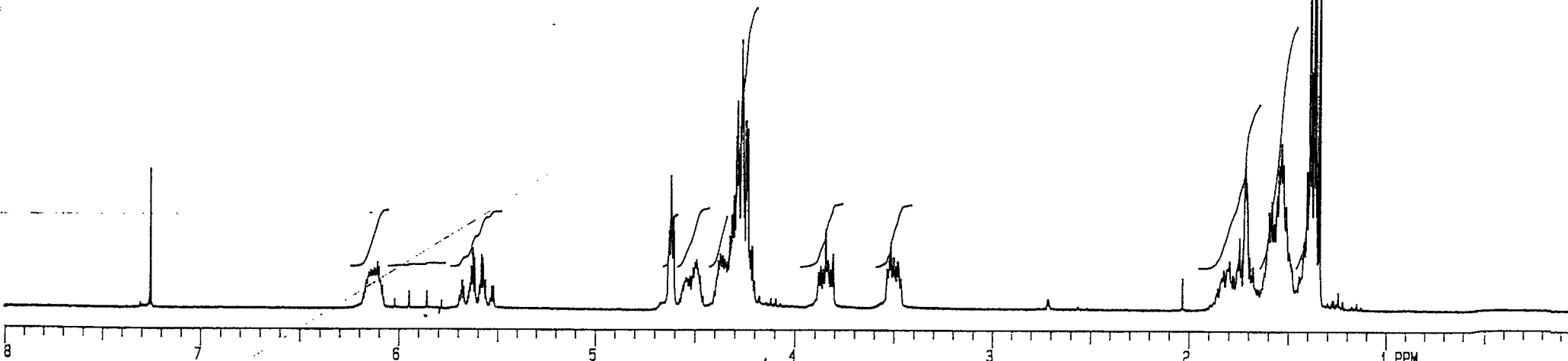
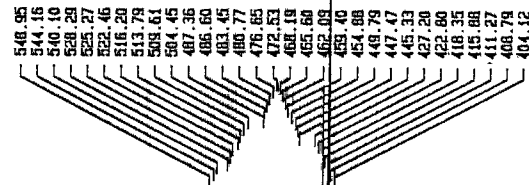
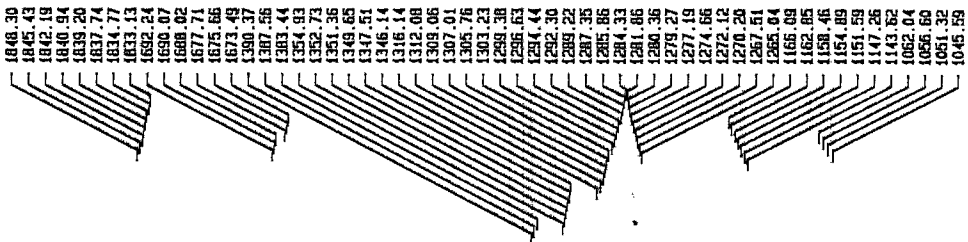


13.000	75	1.000	-450.0	32	---	---	S2PUL
18761.7	0	YYY	20.0	1.000	---	---	
0.800	1.200	S	10200	9903.7		754.7	
9.3	448	25.0	1.0				CDCL3



c
 05-07-96
 23: 48: 27
 6EM 300

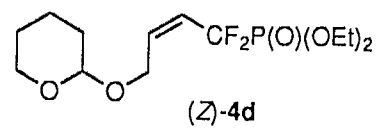
2178.95



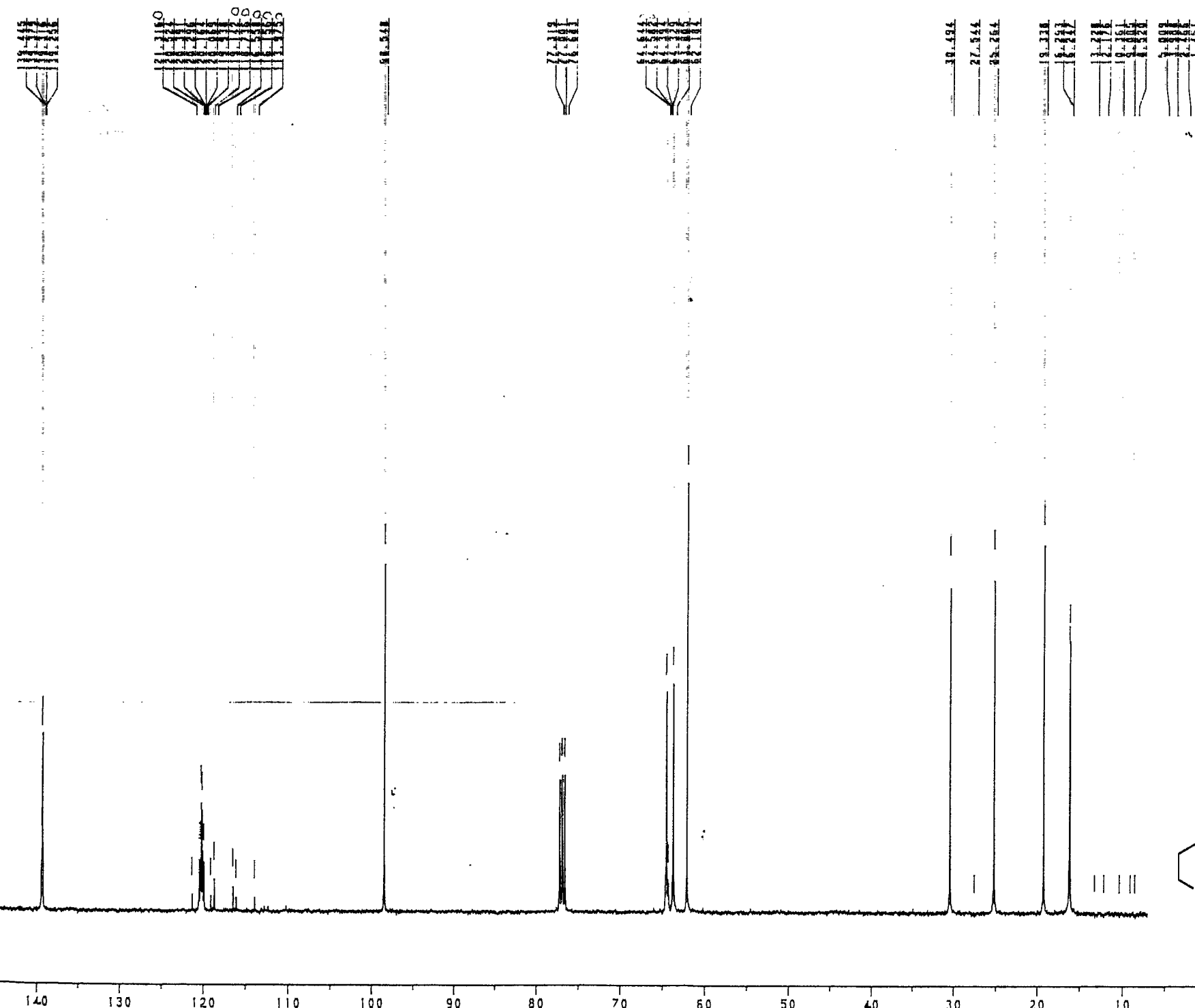
1.000	300	1.000	-450.0
4500.5	0	MM	20.0
3.335	0	C	200
9.0	32		1.0

32	—	—
2400.5	—	0

SCPUL
—
CDCl3



H
02-19-95
02:34:21
824 300



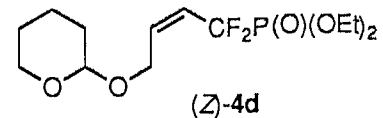
SASHIDA.003
 AU PROG:
 POWGATE.AU

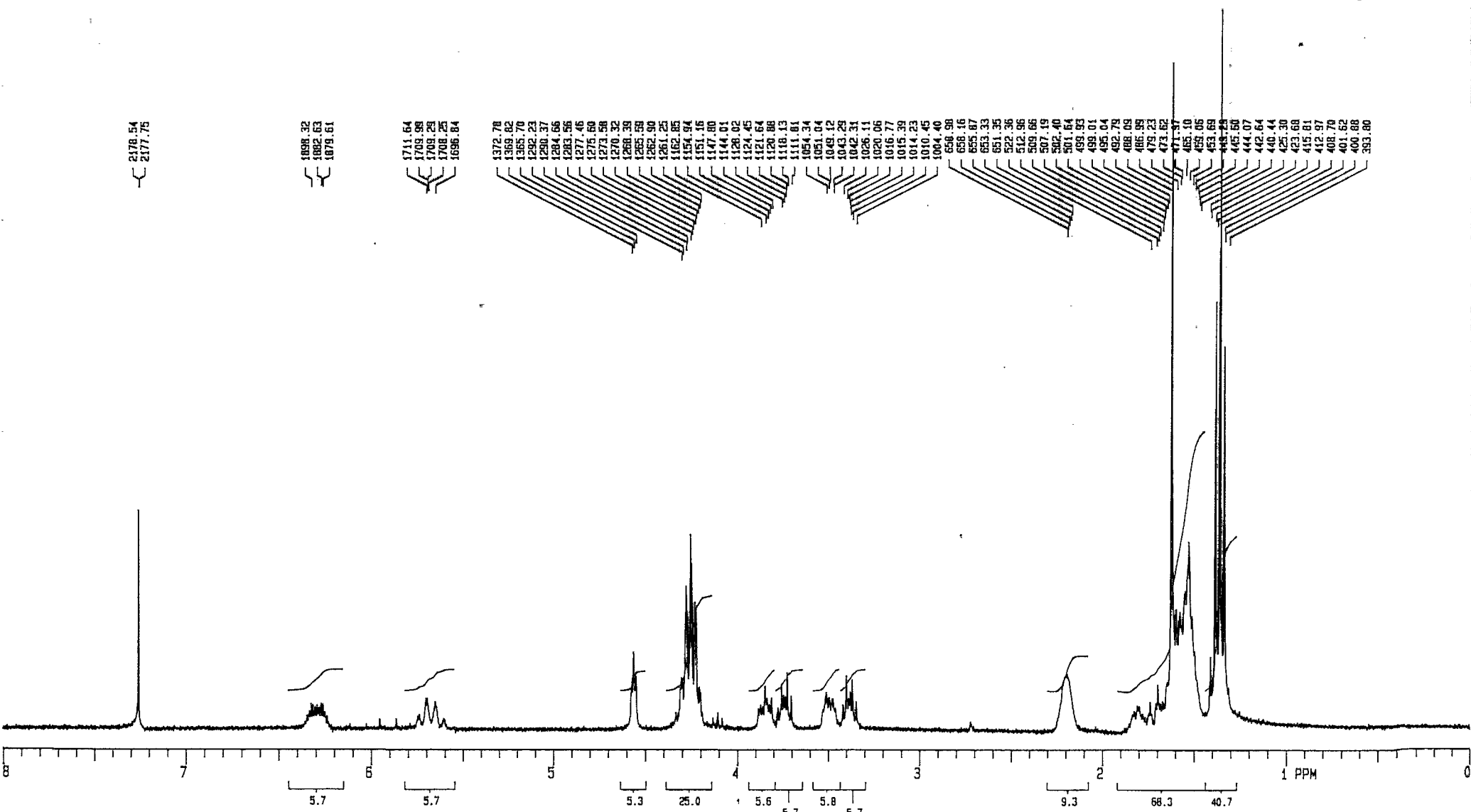
SF 100.614
 SY 74.8775000
 O1 5500.000
 SI 32768
 TD 32768
 SW 25000.000
 HZ/PT 1.526

PW 5.0
 RD 0.0
 AQ .655
 RG 800
 NS 632
 TE 297

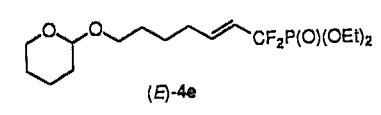
FW 31300
 O2 6500.000
 DP 16H DD

LB 2.000
 GB 0.0
 CX 35.00
 CY 0.0
 F1 150.008P
 F2 .019P
 HZ/CM 431.170
 PPM/CM 4.285
 SR -6121.48



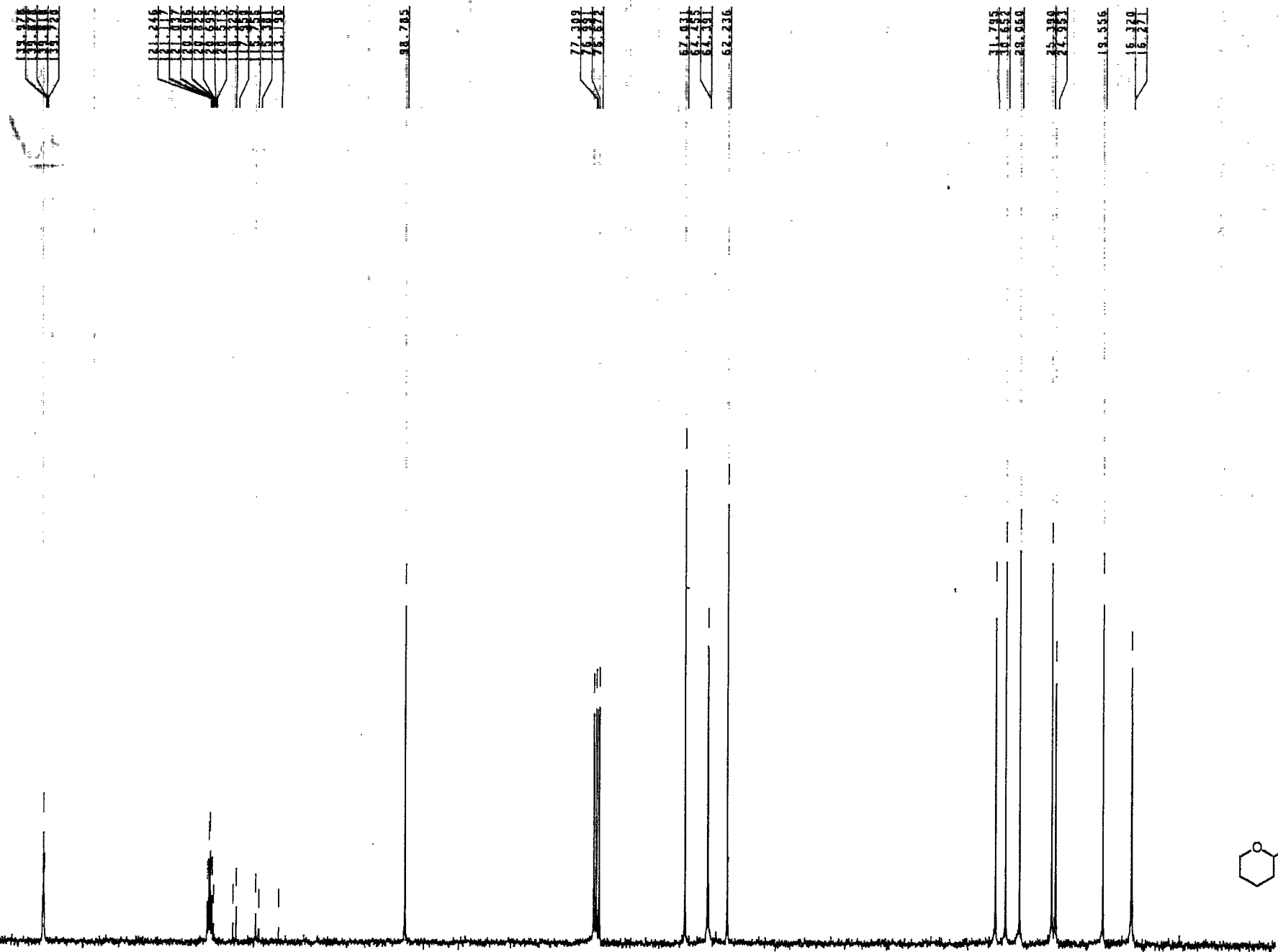


1.000	300	1.000	-450.0	32	--	--	S2PUL
4500.5	0	NNN	1800.0	--	--	--	
3.335	1.500	C	200	2400.6	0		
12.7	16		1.0				CDCL3



H
01-16-95
00:52:35
6EM 300

14-1-42-1



21.246
21.077
20.906
20.828
20.695
20.515
19.319
18.943
16.756
16.311
16.190

98.765

77.309
76.941
76.672

67.031
66.789
66.381
66.236

31.789
31.652
29.980

27.389
27.311

19.556

16.389
16.271



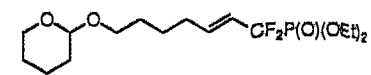
FID1
AU PROG:
POWGATE.AU

SF 100.624
SY 74.8775000
D1 5500.000
SI 32768
TD 32768
SW 25000.000
HZ/PT 1.526

PW 5.0
RD 0.0
AQ .655
RG 800
NS 440
TE 297

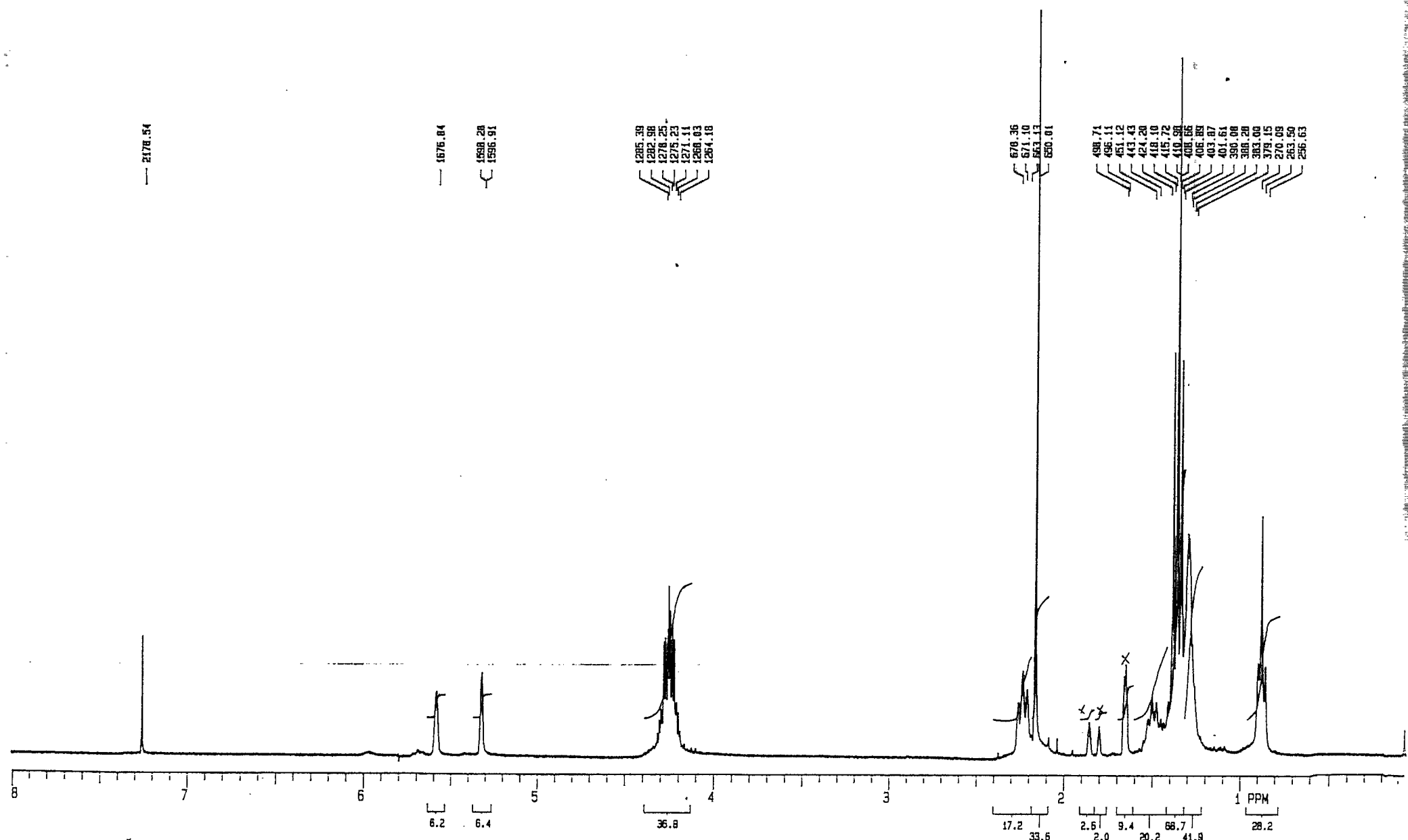
FW 31300
D2 6500.000
DP 16H D0

LB 2.000
OB 0.0
CX 35.00
CY 0.0
F1 150.007P
F2 .019P
HZ/CM 431.213
PPM/CM 4.285
SR -6123.00



(E)-4e

140 130 120 110 100 90 80 70 60 50 40 30 20 10



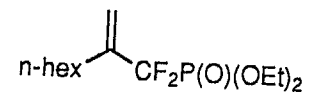
1.000
4500.5
3.335
8.0'

300
0
-0
15

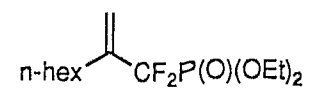
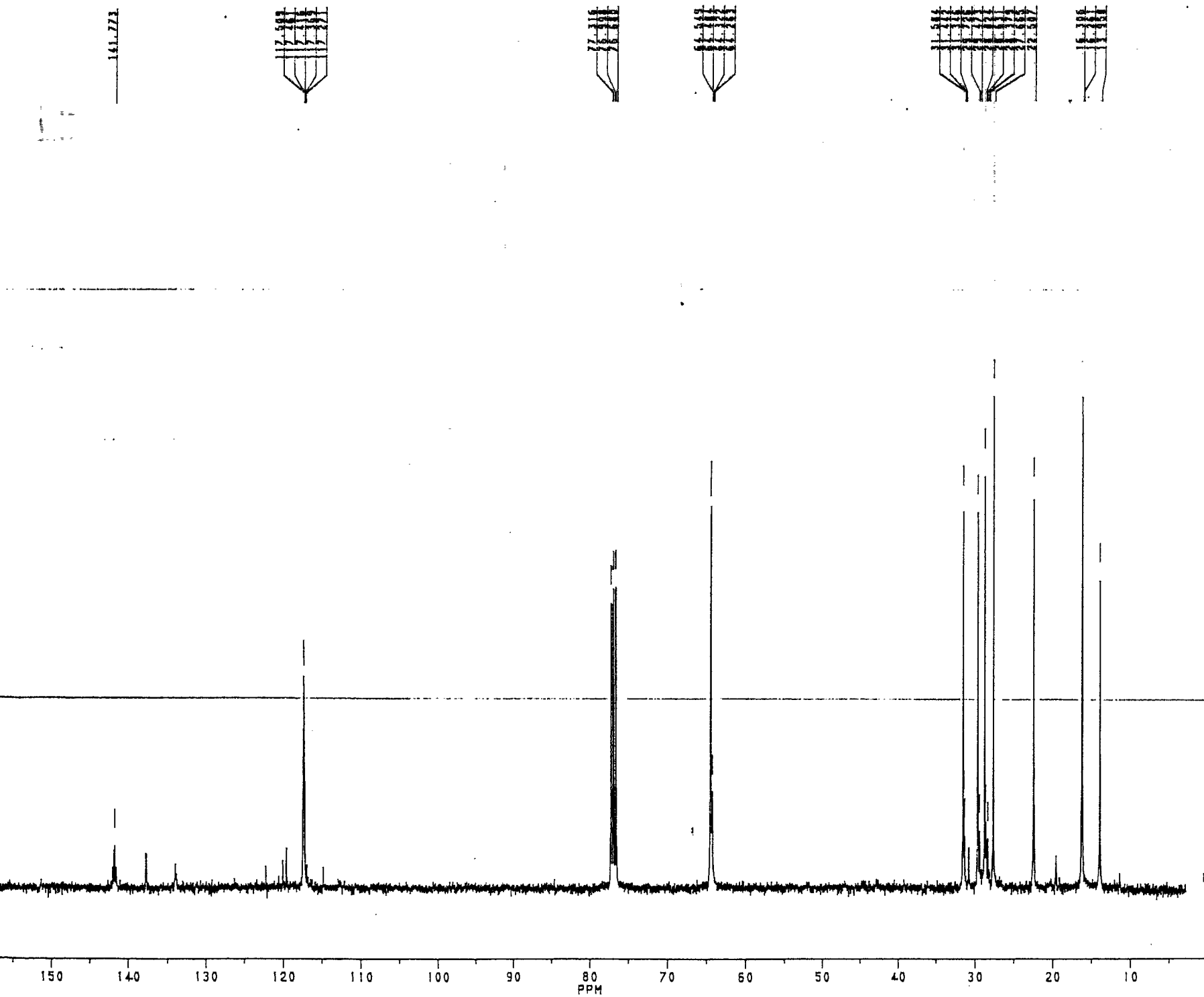
1.000
NMN
C
-450.0
20.0
200
1.0

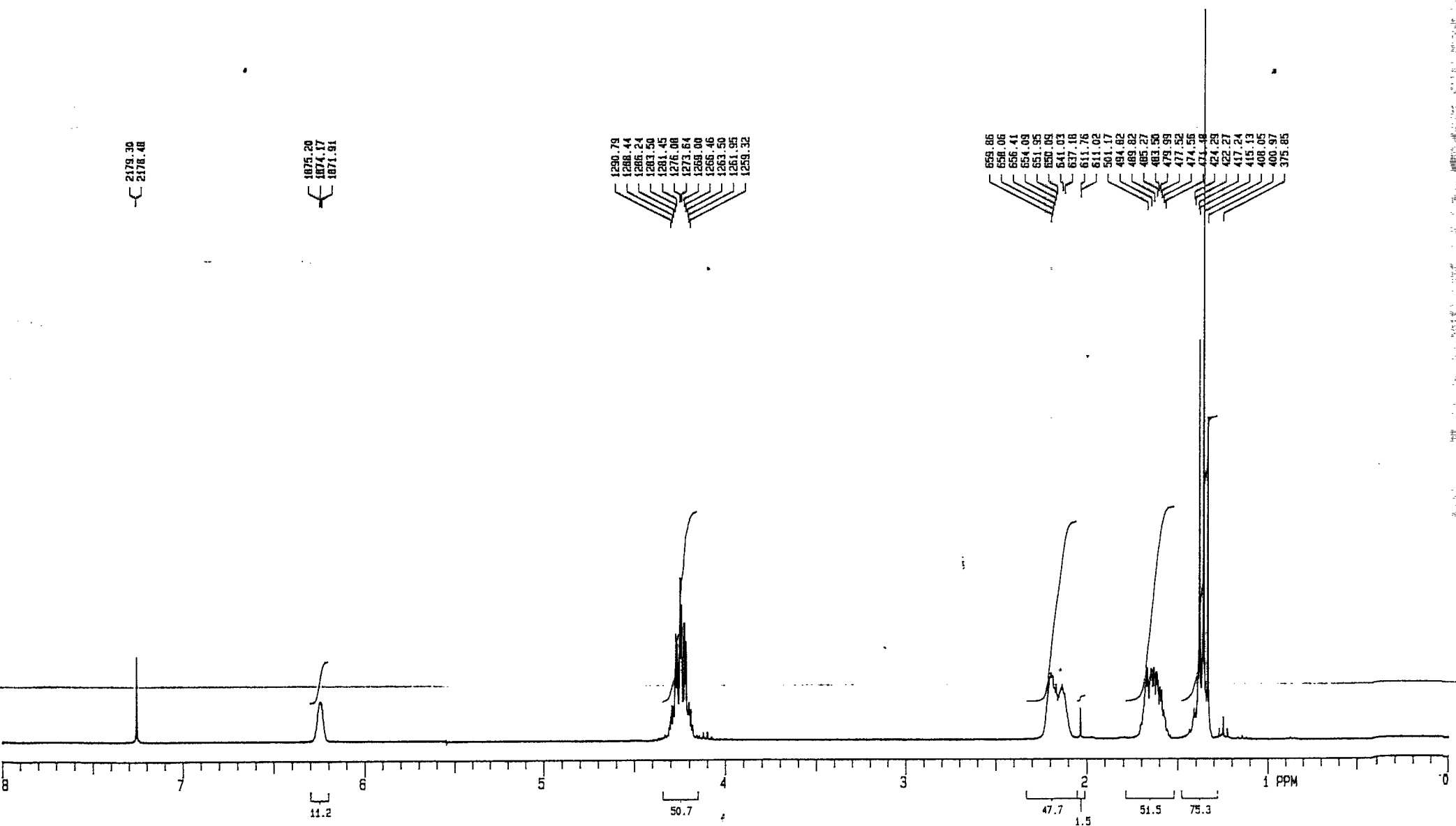
32
2400.5
0

32PUL
CDCl3



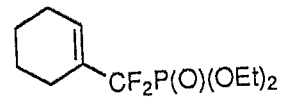
H
02-21-85
09:32:14
GEN 300





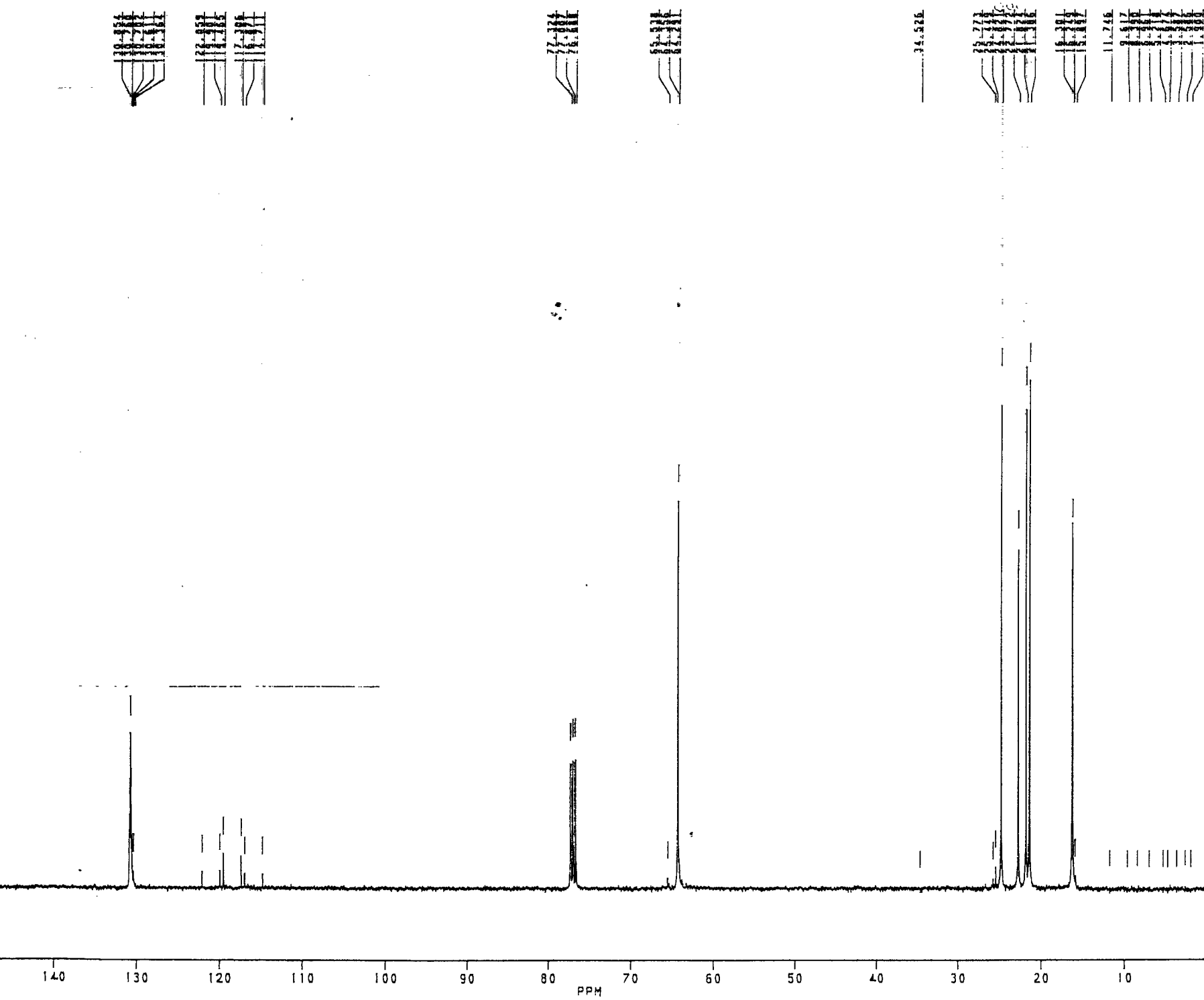
1.000	300	1.000	-450.0	32	---	---
4500.5	0	HNH	1800.0	---	---	---
3.335	1.600	C	200	2400.6	0	---
12.7	15		1.0			


S2PUL
COCL3



4g

H
01-05-95
09:49:33
6EM 300



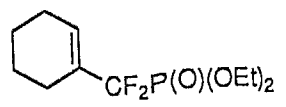

 OHTA.005
 AU PROG
 P0WGATE. AU

SF 100.614
 SY 74.8775000
 O1 5500.000
 SI 32768
 TD 32768
 SH 25000.000
 HZ/PT 1.526

PW 5.0
 RD 0.0
 AQ .655
 RG 800
 NS 750
 TE 297

FW 31300
 O2 6500.000
 DP 16H D0

LB 2.000
 OB 0.0
 CX 35.00
 CY 0.0
 F1 150.008P
 F2 .019P
 HZ/CM 431.170
 PPM/CM 4.285
 SR -6123.00



4g