

Supporting Information

Ruthenium/graphene-like layered carbon composite as efficient hydrogen evolution reaction electrocatalyst

Zhe Chen,^{a, b} Jinfeng Lu^b, Yuejie Ai^a, Yongfei Ji^c, Tadafumi Adschiri^{b*} and Lijun Wan^d

^aSchool of Environmental and Chemical Engineering, North China Electric Power University, Beijing, 102206, China

^bWPI, Advanced Institute for Materials Research, Tohoku University, Sendai, 980-8577, Japan

^cDepartment of Theoretical Chemistry and Biology, School of Biotechnology, Royal Institute of Technology, SE-10691 Stockholm, Sweden

^dBeijing National Laboratory for Molecular Sciences, Institute of Chemistry Chinese Academy of Sciences, Beijing 100190, P. R. China

Corresponding Author

*E-mail: ajiri@tagen.tohoku.ac.jp

Computational models and methods

In this work, Plane-wave-based DFT calculations on slab models are carried out by the exchange-correlation functional GGA-PBE.¹ The projector-augmented wave (PAW) method are employed to describe the electron-ion interaction.² The cutoff energy was used at 400 eV in present calculations. First-order Methfessel-Paxton smearing technique with a width of 0.1 eV was invoked. The self-consistent field iterations were considered converged when the total energy changed by $<10^{-5}$ eV. To model the Ru (001) surface and Pt (111) surface, we used a slab of five close packed layers in a 5×5 hexagonal supercell with a vacuum layer of 1.5nm. The optimized bulk geometry was kept except the top two layers which were relaxed for optimization. For geometry optimizations, the Brillouin zone was sampled with a Monkhorst-Pack mesh³ of $3 \times 3 \times 1$ k-points. All the atoms were allowed to relax until the maximum force becomes less than 2×10^{-4} eV/pm. All the calculations are performed using the program Vienna ab initio simulation package (VASP ,version 5.3.3) ⁴⁻⁶. To model the Ru(001) surface and Pt(111) surface, we used a slab of five close packed layers in a 5×5 hexagonal supercell with a vacuum layer of 1.5nm with the H₂ coverage is 0.04ML. The optimized bulk geometry was kept except the top two layers which were relaxed for optimization. In our work, we defined the adsorption energy E_{ad} to describe the HER performance of catalyst Ru or Pt^{7,8}.

$$\Delta E_{ad} = E_{\text{surface-H}} - (E_{\text{surface}} + E_{H_2}/2) + 0.24 \text{ eV}$$

Where E_{surface} is the energy of super-cell for Ru(001) and Pt(111) surfaces; $E_{\text{surface-H}}$ is the total energy of complex of hydrogen adsorption on surfaces; E_{H_2} is the energy of hydrogen molecule. 0.24 eV is added to the calculated binding energies (with respect to gaseous H₂) to give adsorption free energies.⁸

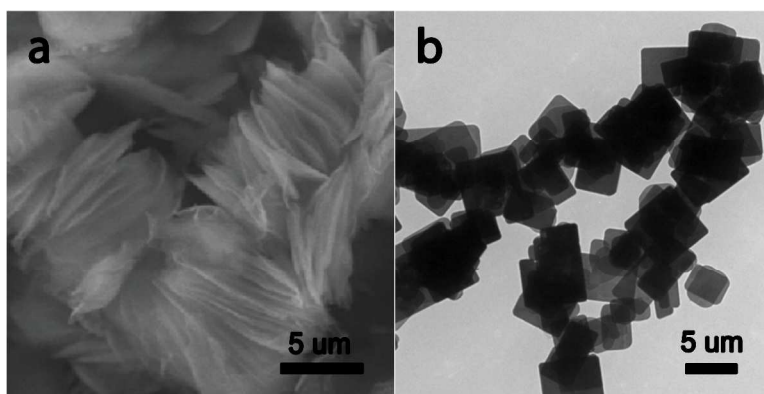


Figure S1 a) SEM and b) TEM images of RUB-15

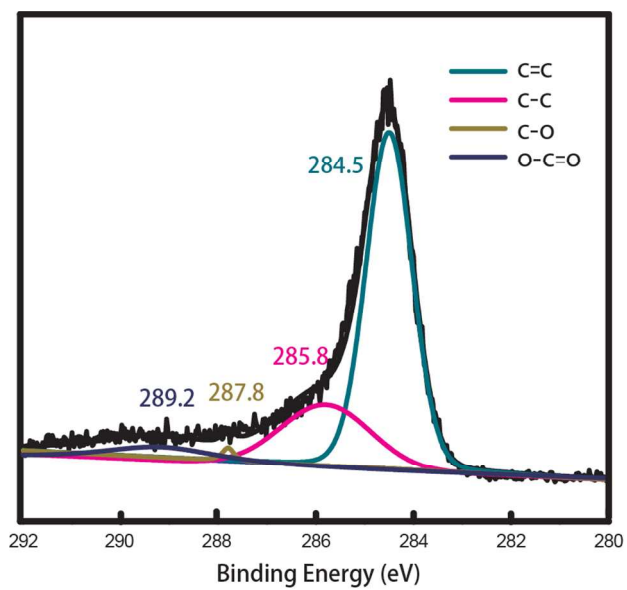


Figure S2 XPS spectra of GLC

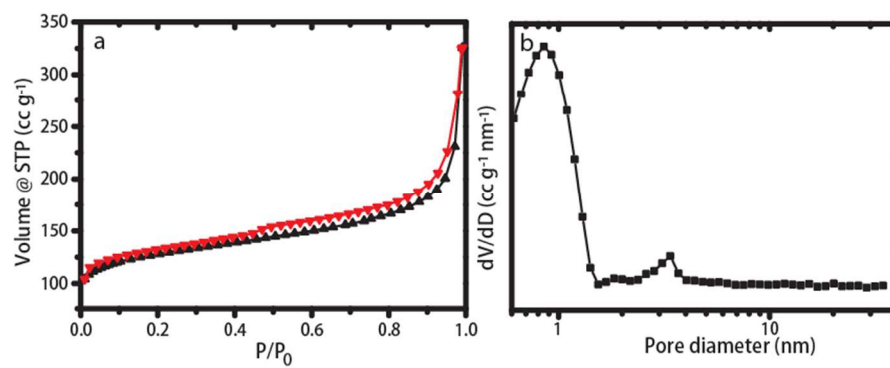


Figure S3 a) N₂ adsorption-desorption curve and b) NLDFT pore diameter distribution of GLC

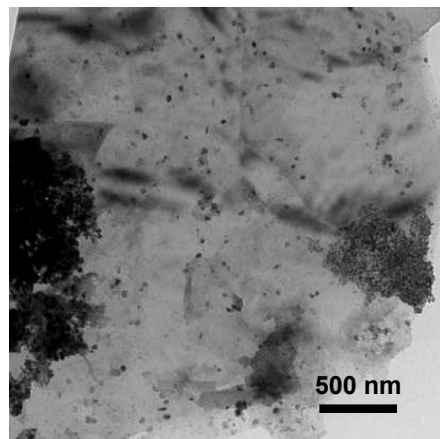


Figure S4 TEM image of Ru/commercial graphene

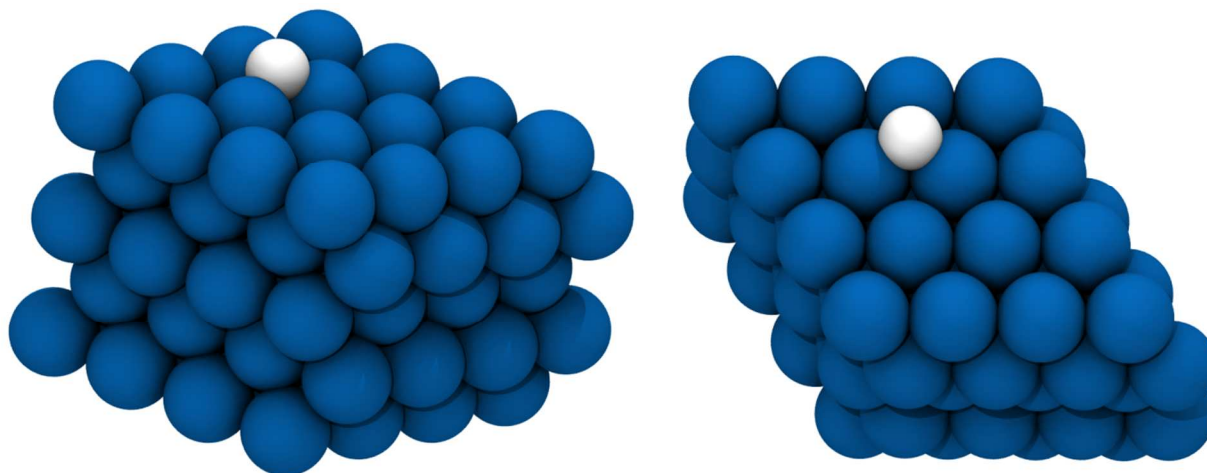


Figure S5. The super-cell structure of hydrogen adsorption on Ru(001) surface. Left: side view, right: top view. Blue ball: Ru atom, white ball: H atom.

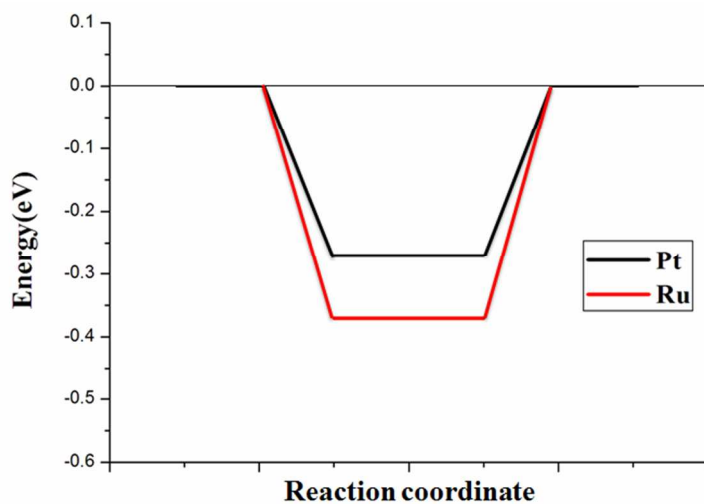


Figure S6. HER energy diagram calculated at the equilibrium potential for Ru and Pt metal electrocatalysts.

References

- (1) Perdew, J. P.; Burke, K.; Ernzerhof, M. Generalized Gradient Approximation Made Simple. *Phys. Rev. Lett.* **1996**, 77, 3865-3868.

- (2) Methfessel, M.; Paxton, A. T. High-Precision Sampling for Brillouin-Zone Integration in Metals. *Phys. Rev. B* **1989**, *40*, 3616-3621.
- (3) Monkhorst, H. J.; Pack, J. D. Special Points for Brillouin-Zone Integrations. *Phys. Rev. B* **1976**, *13*, 5188-5192.
- (4) Kresse, G.; Hafner, J. Ab-initio Molecular-Dynamics Simulation of the Liquid-metal Amorphous-Semiconductor Transition in Germanium. *Phys. Rev. B* **1994**, *49*, 14251-14269.
- (5) Kresse, G.; Furthmüller, J. Efficient Iterative Schemes for Ab-initio Total-Energy Calculations Using a Plane-Wave Basis Set. *Phys. Rev. B* **1996**, *54*, 11169-11186.
- (6) Kresse, G.; Furthmüller, J. Efficiency of Ab-initio Total Energy Calculations for Metals and Semiconductors Using a Plane-Wave Basis Set. *Comput. Mater. Sci.* **1996**, *6*, 15-50.
- (7) Norskov, J. K.; Bligaard, T.; Rossmeisl, J.; Christensen, C. H. Towards the Computational Design of Solid Catalysts. *Nature Chem.* **2009**, *1*, 37-46.
- (8) Norskov, J. K.; Bligaard, T.; Logadottir, A.; Kitchin, J. R.; Chen, J. G.; Pandelov, S.; Norskov, J. K. Trends in the Exchange Current for Hydrogen Evolution. *J. Electrochem. Soc.* **2005**, *152*, J23-J26.