

The following supplement accompanies the article

Does behaviour affect the dispersal of flatback post-hatchlings in the Great Barrier Reef?

Natalie Wildermann^{1,2}, Kay Critchell^{1,2}, Mariana MPB Fuentes³, Colin Limpus⁴, Eric Wolanski^{1,2}, and Mark Hamann^{1,2}.

<http://dx.doi.org/10.1098/rsos.170164>

Author for correspondence:

Natalie Wildermann

E-mail: natalie.wildermann@my.jcu.edu.au

Figure S1a. Time series of current velocity and direction between 1995 and 2012. Grey areas represent the flatback hatching season (December – February). Current data provided by Jodie Schlaefer.

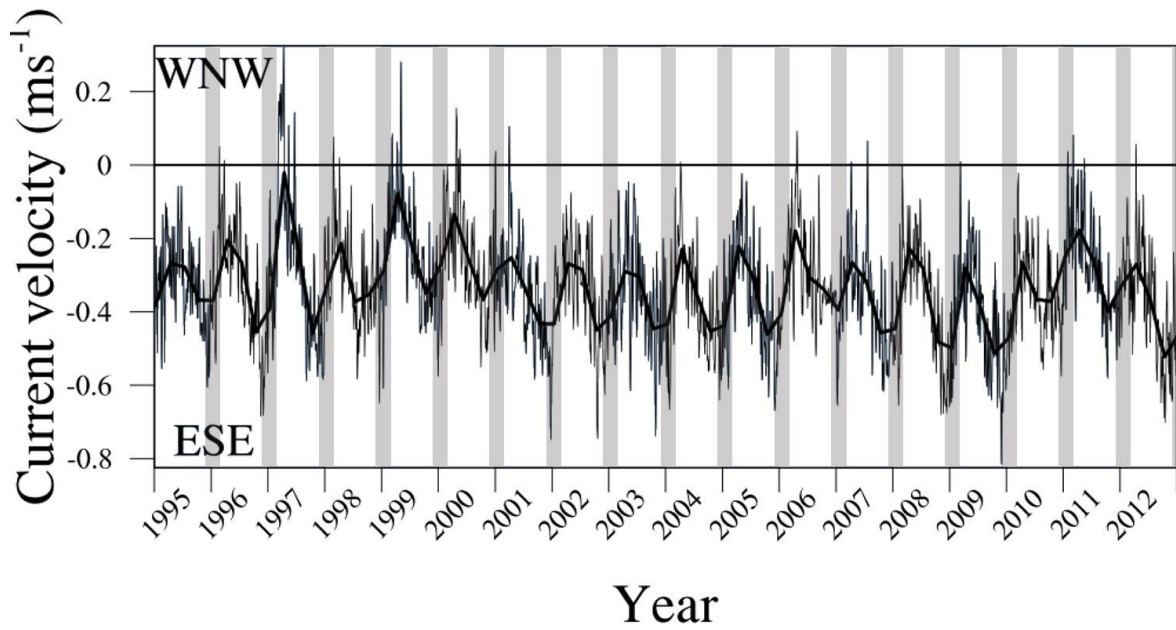


Figure S1b. Time series of wind speed and direction between 1995 and 2012. Blue areas represent the flatback hatching season (December – February). Wind data provided by the Australian Bureau of Meteorology (BoM).

