

SUPPLEMENTAL DATA

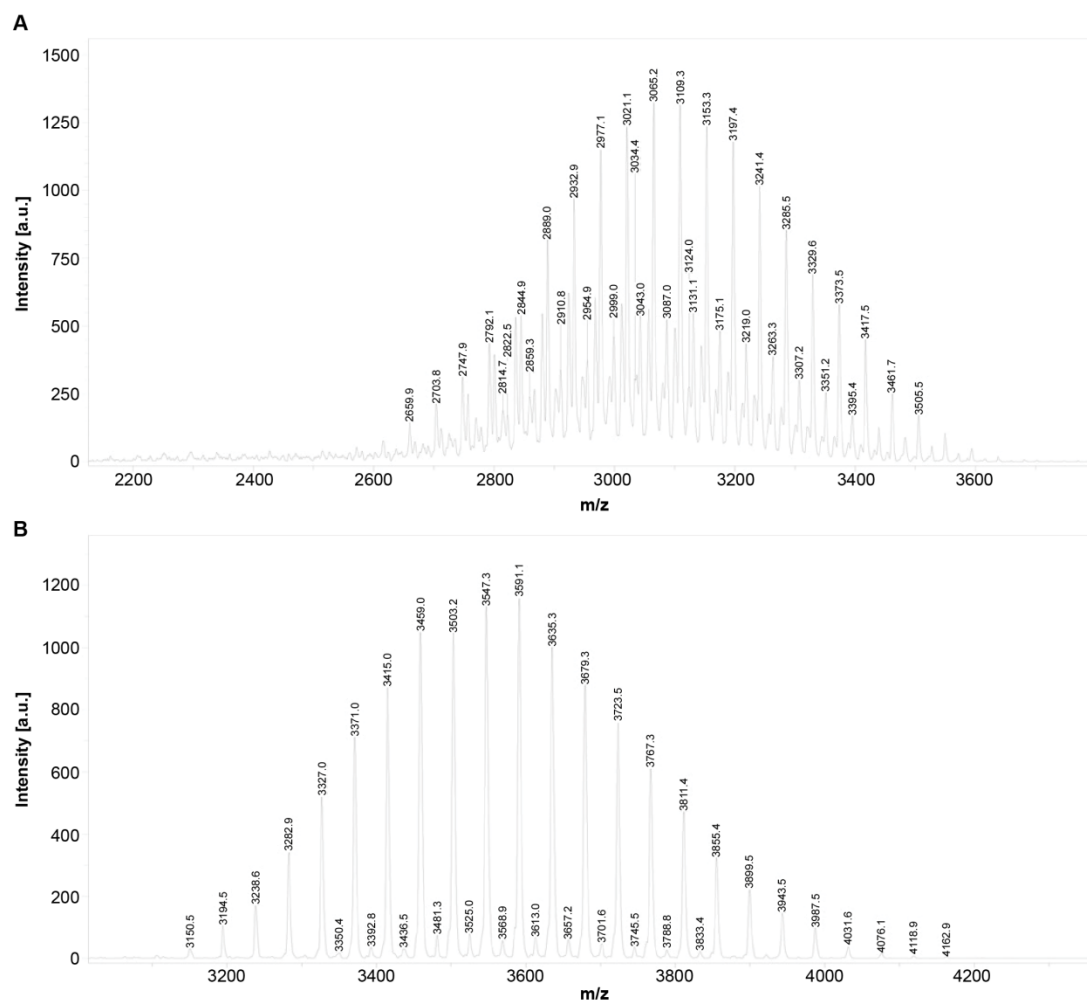


Figure S1. Matrix-assisted laser desorption ionization-time-of-flight mass spectra of 1,2-distearoyl-phosphatidylethanolamine-methyl-polyethyleneglycol conjugate-2000 (DSPE-PEG₂₀₀₀)-NHS (A) and DSPE-PEG₂₀₀₀-c[RGDyK] (B). For abbreviations, please see Table 1.

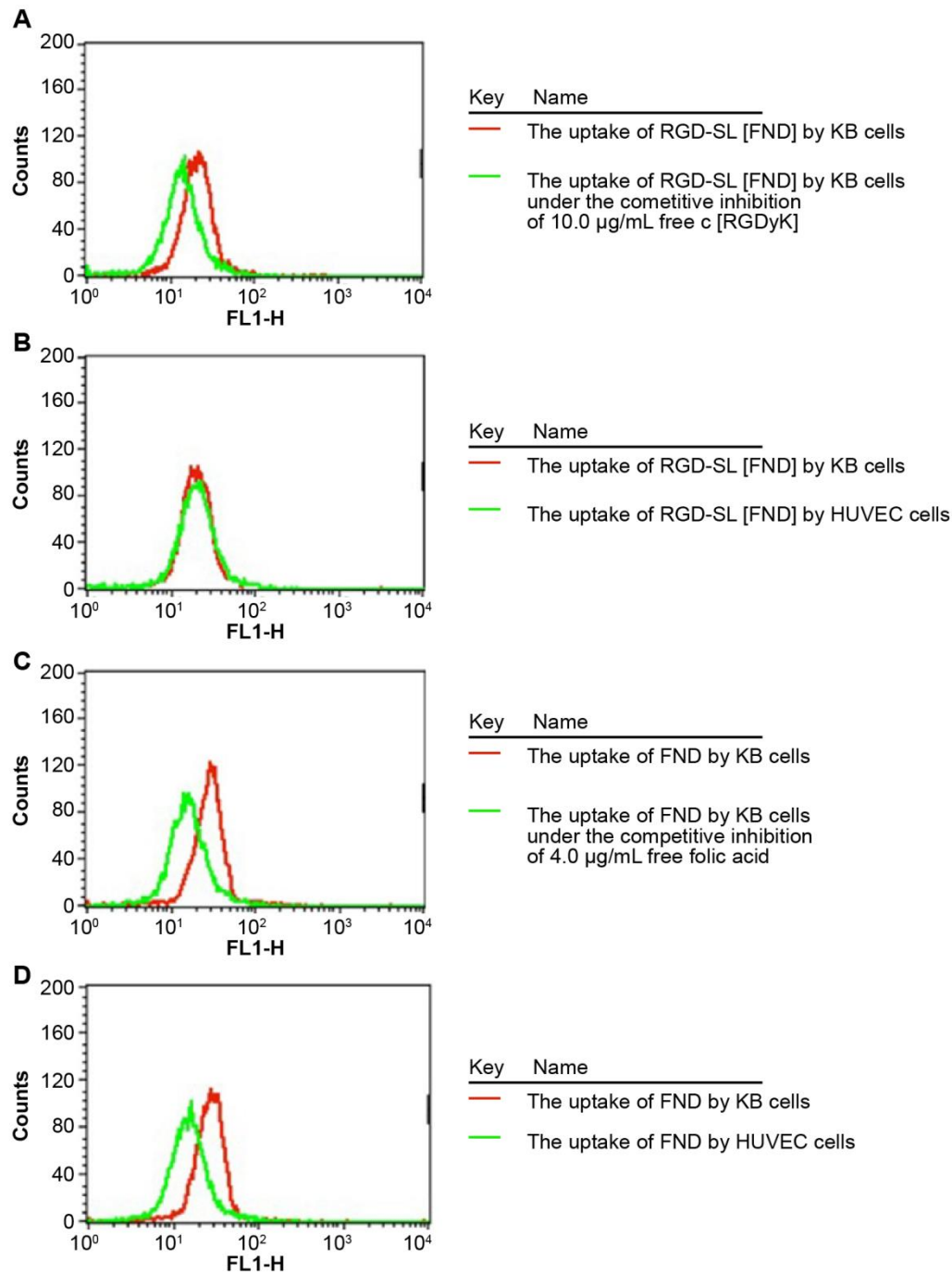


Figure S2. The uptake of RGD-SL[FND] and FND by KB cells or human umbilical vein endothelial cells (HUVECs) was examined by flow cytometry. The panels show the influence of competitive inhibition by 10.0 µg/mL free c[RGDyK] on the uptake of RGD-SL[FND] by KB cells (A), a comparison of RGD-SL[FND] uptake by KB cells and HUVECs (B), the influence of competitive inhibition by 4.0 µg/mL free folic acid (FA) on the uptake of FND by KB cells (C), and a comparison of FND

uptake by KB cells and HUVECs (D). Excitation: 405 nm; emission: 505 nm; 1×10^4 cells collected for each sample. For abbreviations, please see Table 1.

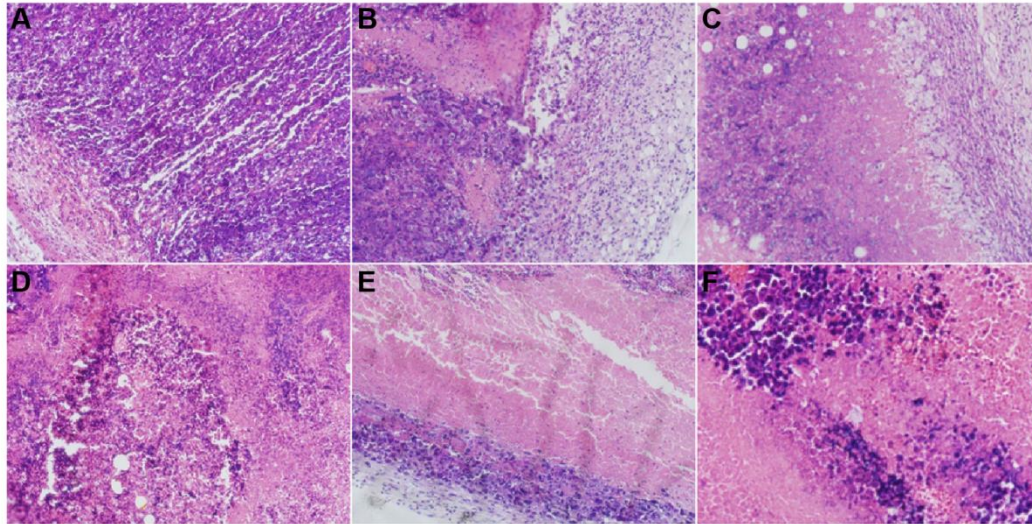


Figure S3. Histopathological images of haematoxylin- and eosin-stained tumours from S180 tumour-bearing mice treated with normal saline (A), DOX·HCl (B), FND/DOX (C), L[FND/DOX] (D), SL[FND/DOX] (E), or RGD-SL[FND/DOX] (F). Original magnification: $\times 40$. For abbreviations, please see Table 1.