

Figure S1. Western blot of CFBE cells stably expressing E92K, L1077P and M1101K compared to parental CFBE cells.

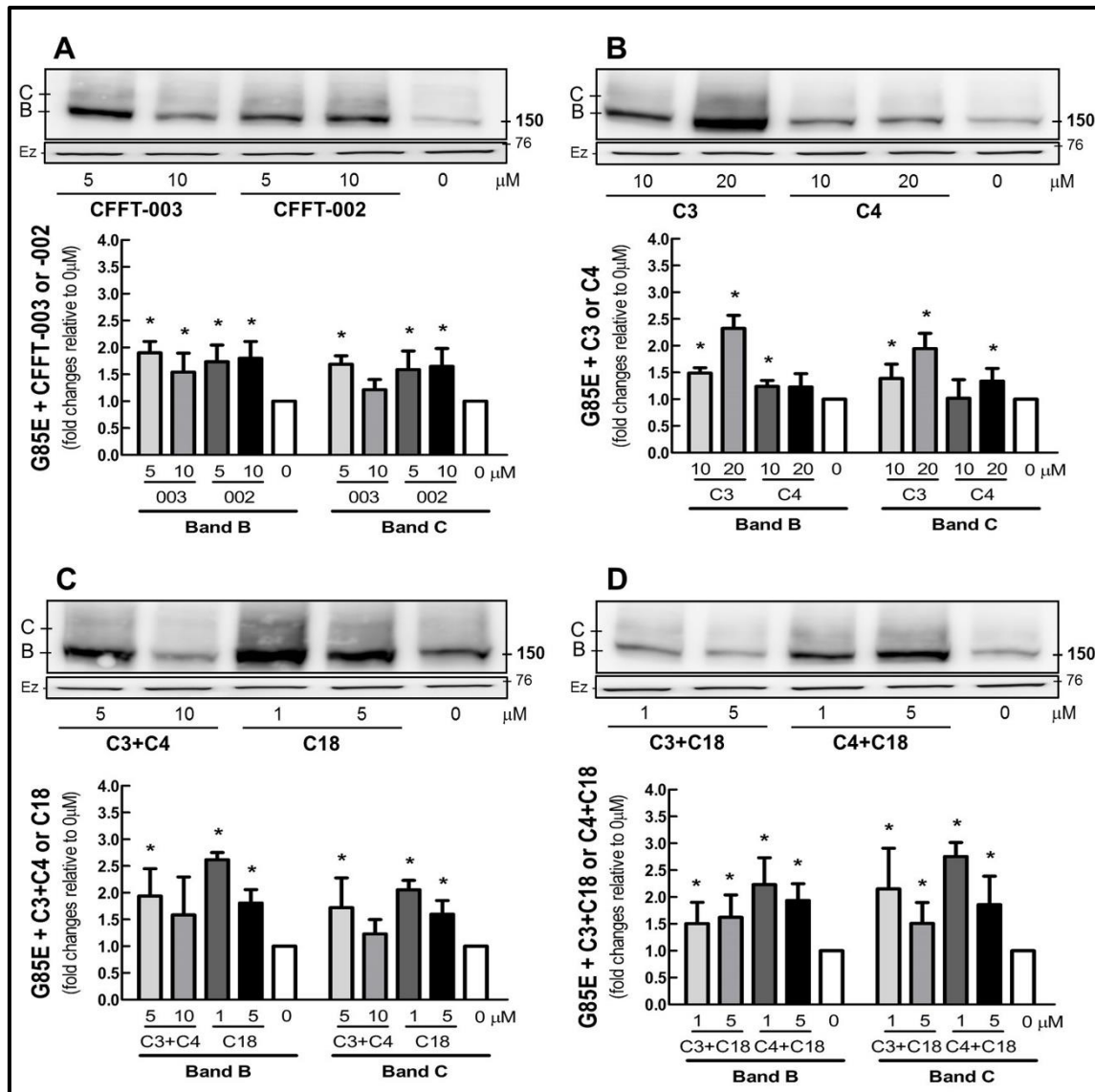


Figure S2. Effect of correctors on CFTR bearing G85E. Cos-7 cells transfected with 4μg of CFTR construct bearing G85E for 48h were treated for 16h with (A) CFFT-003, CFFT-002, (B) C3, C4, (C) C3+C4, C18, (D) C3+C18 or C4+C18. Immunoblots and quantification of CFTR immature (band B) and mature (band C) forms (ANOVA, n=3-4). Data normalized for 0μM (control); vs. 0μM: *P<0.05. Ezrin (Ez) was used as a loading control. C: control.

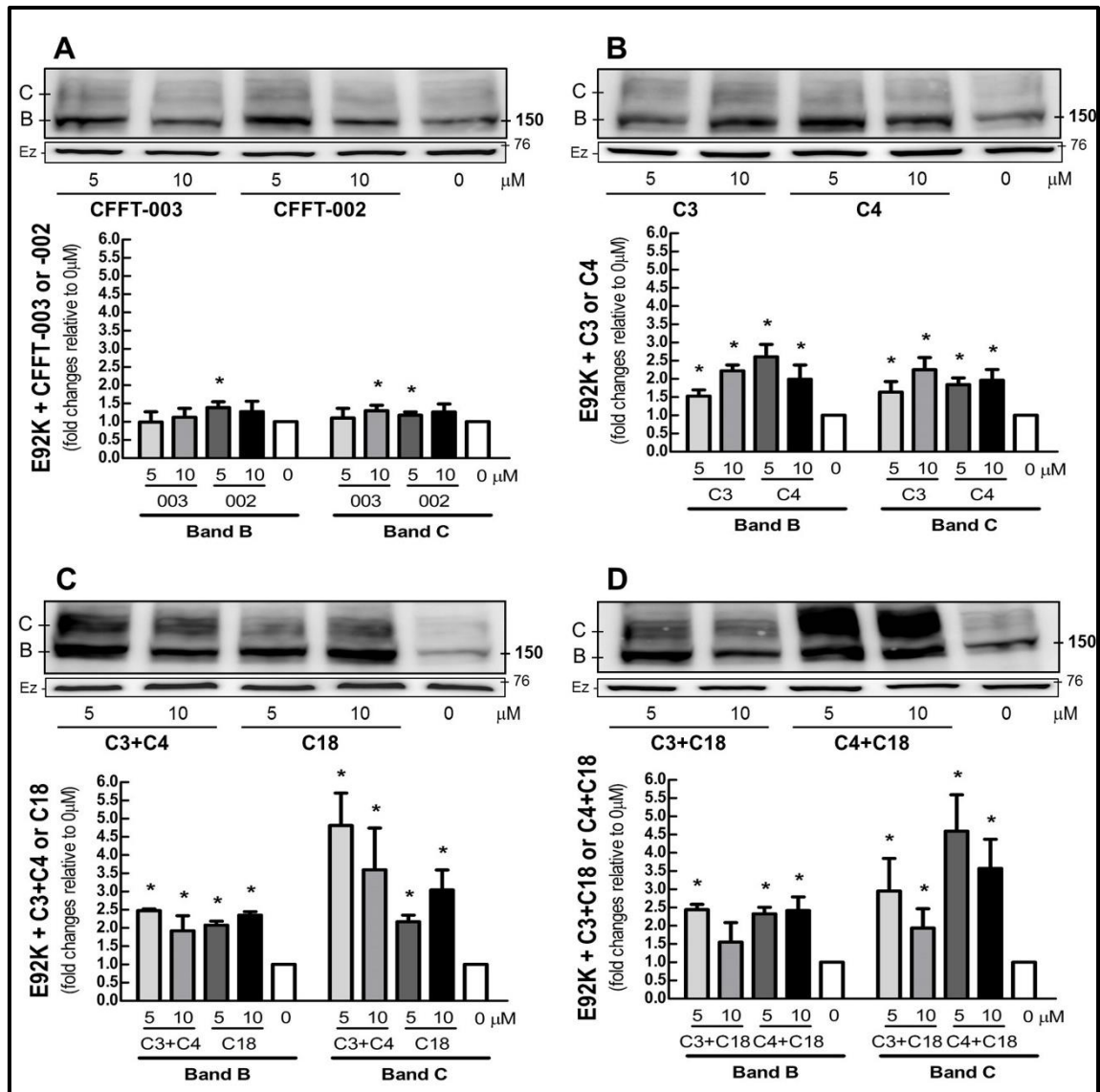


Figure S3. Effect of correctors on CFTR bearing E92K. Cos-7 cells transfected with 4μg of CFTR construct bearing E92K for 48h were treated for 16h with (A) CFFT-003, CFFT-002, (B) C3, C4, (C) C3+C4, C18, (D) C3+C18 or C4+C18. Immunoblots and quantification of CFTR immature (band B) and mature (band C) forms (ANOVA, n=3-4). Data normalized for 0μM (control); vs. 0μM: *P<0.05. Ezrin (Ez) was used as a loading control. C: control.

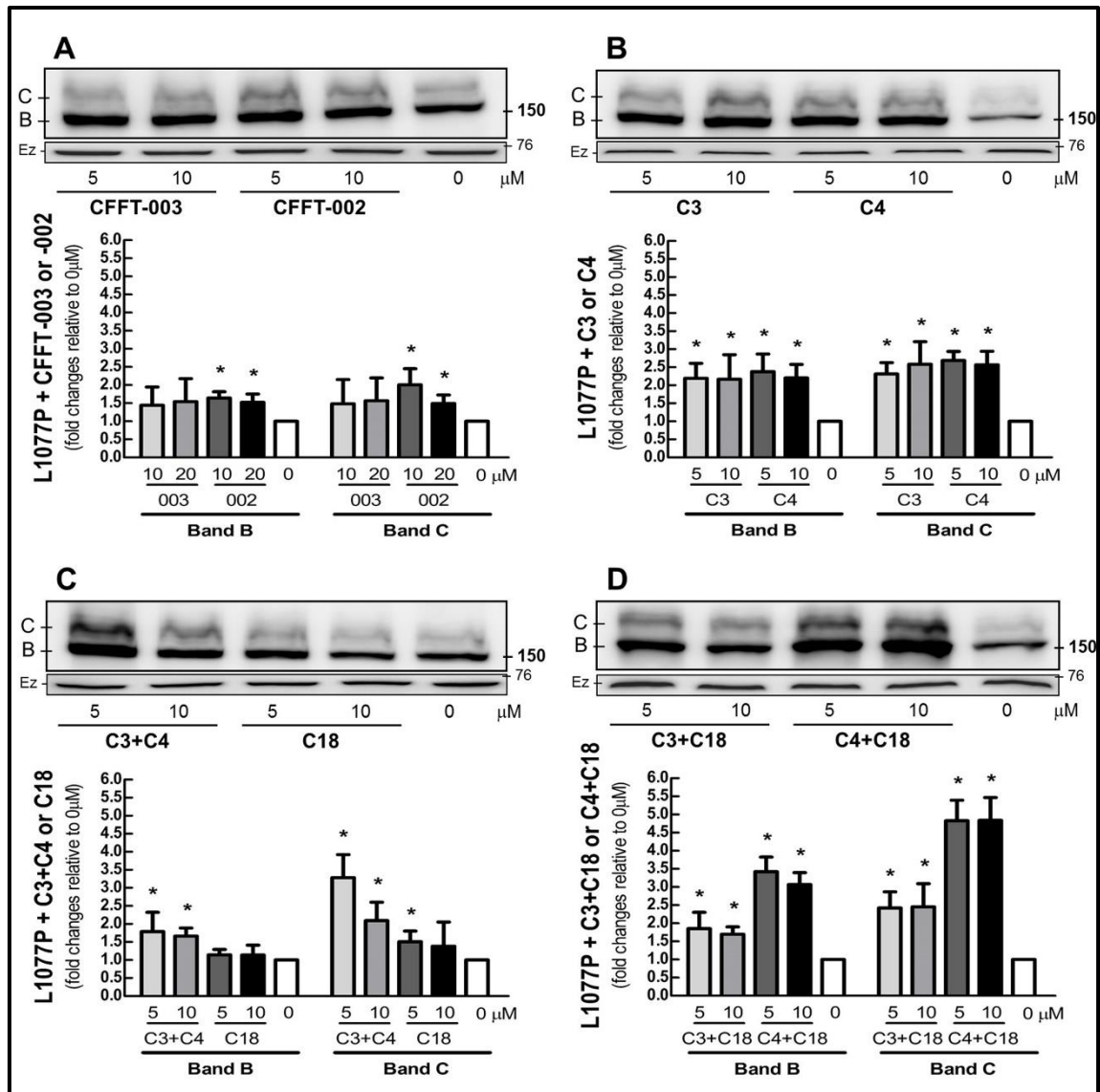


Figure S4. Effect of correctors on CFTR bearing L1077P. Cos-7 cells transfected with 4 μg of CFTR construct bearing L1077P for 48h were treated for 16h with (A) CFFT-003, CFFT-002, (B) C3, C4, (C) C3+C4, C18, (D) C3+C18 or C4+C18. Immunoblots and quantification of CFTR immature (band B) and mature (band C) forms (ANOVA, n=3-4). Data normalized for 0 μM (control); vs. 0 μM: *P<0.05. Ezrin (Ez) was used as a loading control. C: control.

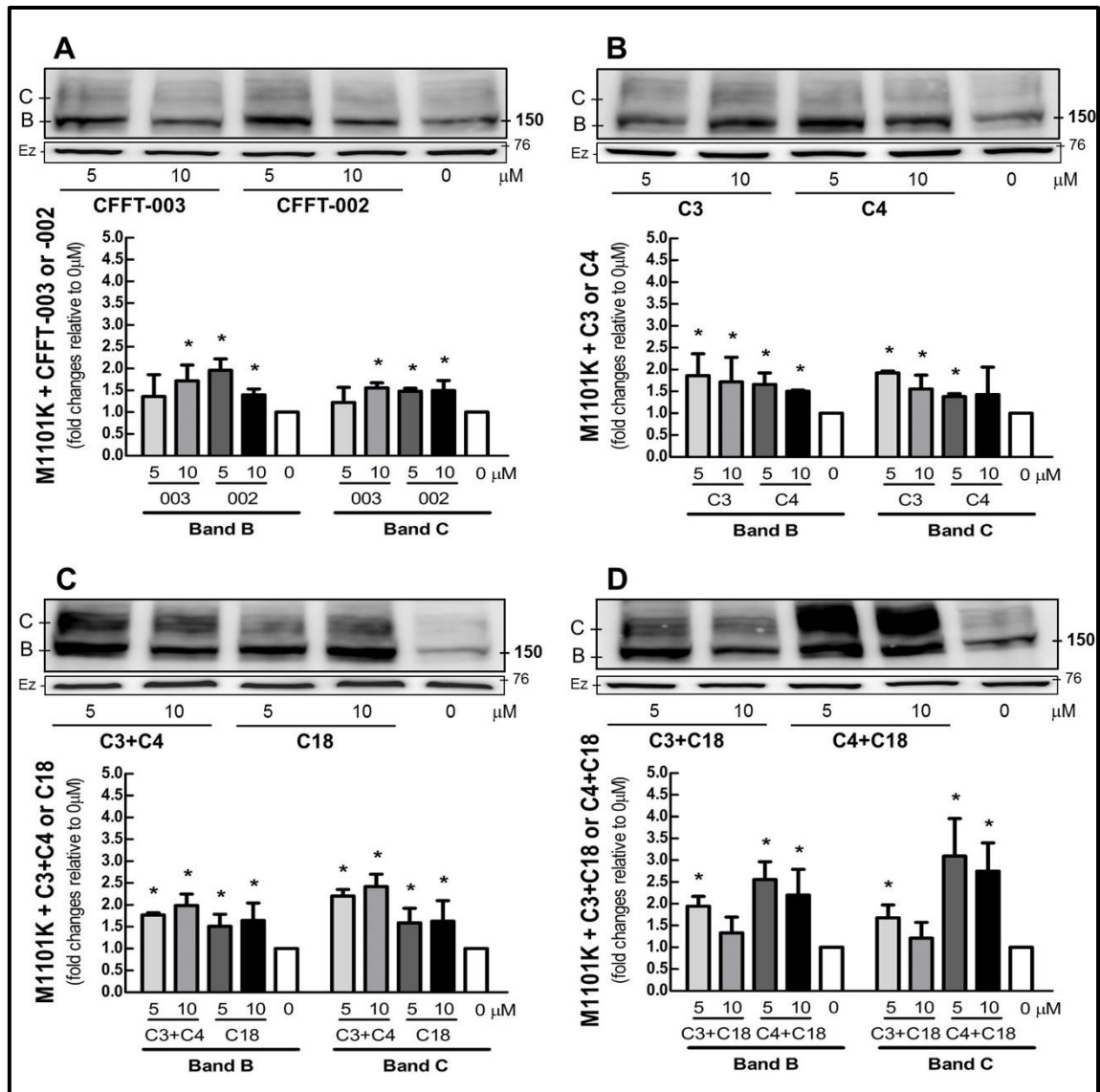


Figure S5. Effect of correctors on CFTR bearing M1101K. Cos-7 cells transfected with 4μg of CFTR construct bearing M1101K for 48h were treated for 16h with (A) CFFT-003, CFFT-002, (B) C3, C4, (C) C3+C4, C18, (D) C3+C18 or C4+C18. Immunoblots and quantification of CFTR immature (band B) and mature (band C) forms (ANOVA, n=3-4). Data normalized for 0μM (control); vs. 0μM: *P<0.05. Ezrin (Ez) was used as a loading control. C: control.