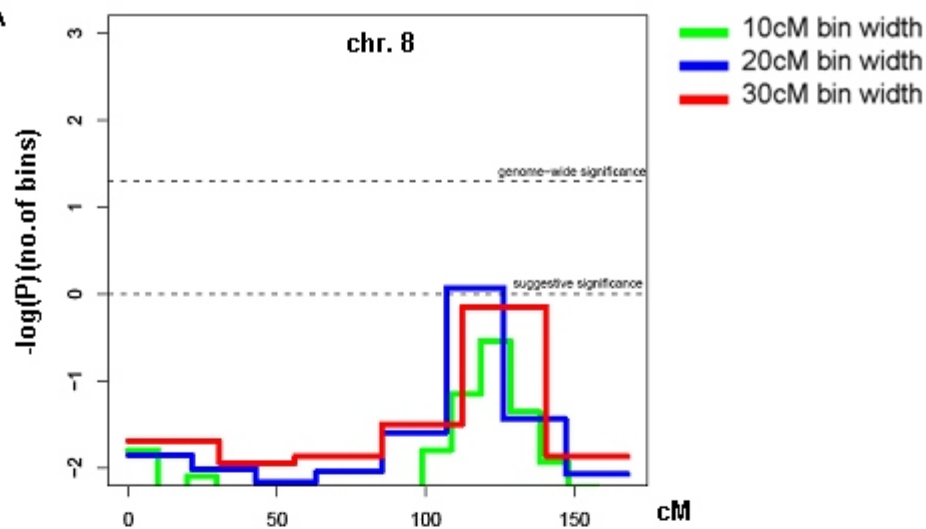
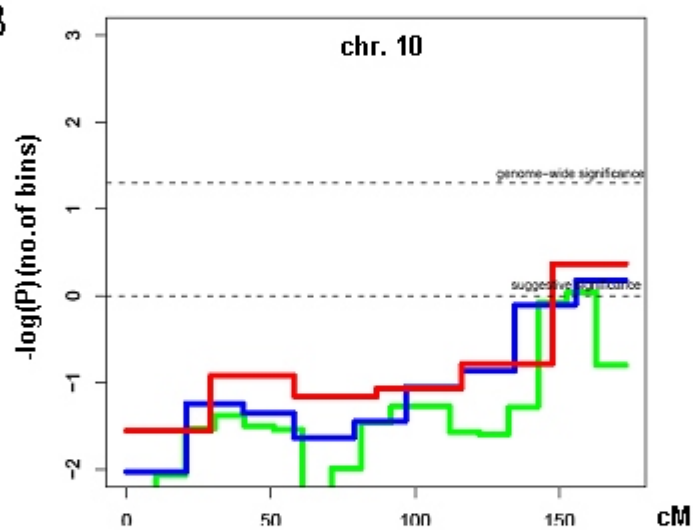


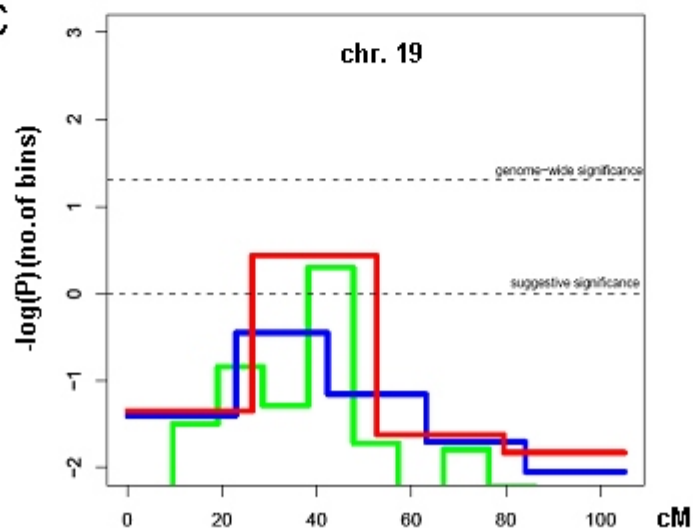
A



B



C



## Figure Legend

**Supplementary figure** Results obtained for chromosome 8 (A) and 10 (B) using also smaller bin widths (10cM and 20cM, in addition to the traditional 30cM size) for the weighted GSMA on all 8 studies and for chromosome 19 (C) for the weighted GSMA on the 5 studies for classic CD. The Y-axis is the log base 10 of the p value, multiplied by the total number of bins, to give a consistent definition for genome-wide and suggestive significance for all bin widths.