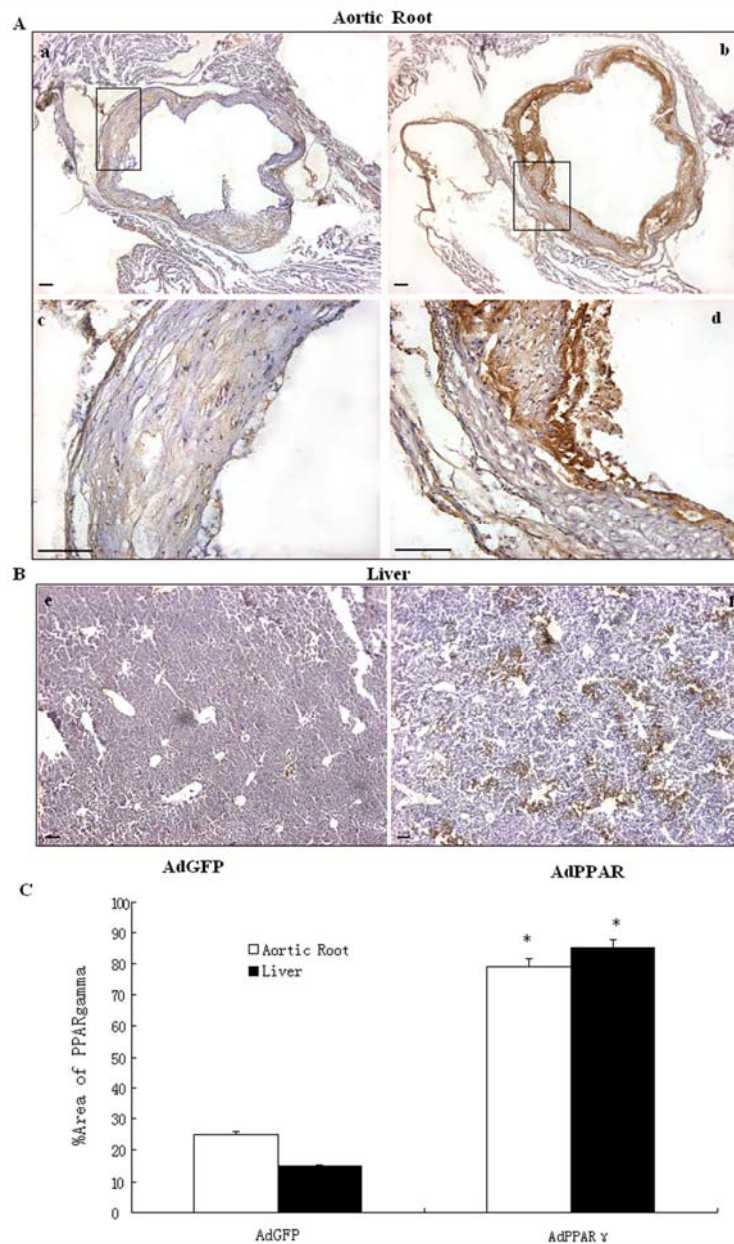


**Online suppl. Fig. 1.** Immunolocalization of caveolin-1 in RAW264.7 cell. RAW264.7 cells were immunostained with mouse monoclonal antibody directed against caveolin-1. Bound primary antibodies were visualized by incubation with distinctly tagged fluorescent secondary antibodies (see “Experimental Procedures”). Plasma membrane localization of caveolin-1 (A) in RAW264.7 cell is shown. The nucleus (visualized by using the blue 4',6-diamidino-2-phenylindole-DNA dye) of Raw264.7 cell is shown in B. Localization of caveolin-1 on the cell surface and to some degree in the intracellular compartments can be visible when both images are superimposed (C). Images in A-C were taken at  $\times 40$  magnification. Scale bar 10  $\mu\text{m}$ . (*Experimental Procedures* Cell monolayers were grown on sterile glass coverslips. They were washed in PBS, fixed in 4% paraformaldehyde for 10 min at room temperature. The cells were permeabilized with 0.5% Triton X-100 for 5 min and blocked with 5% BSA in PBS for 1h. Subsequently, they were incubated overnight at 4° C with mouse monoclonal against caveolin-1 (Santa Cruz Biotechnology, INC) followed by 30 min with fluorescein(FITC)-conjugated donkey anti-mouse IgG (Jackson Immunoresearch Laboratories, INC) at 37°C. The coverslips were washed and mounted using VectaShield mounting medium for fluorescence (Vector Laboratories Inc., Burlingame, CA). Cells were visualized with a Leica TCS SP2 confocal microscope (Leica, Heidelberg, Germany). Negative controls for immunofluorescence staining were performed by substitution of mouse isotype control antibody (abcam) for the primary antibody.)

Figure suppl



**Online suppl. Fig. 2.** Foreign PPAR $\gamma$ 1 was expressed in the aorta and liver. Sections of representative lesions in the aortic roots (A) and liver (B) of AdPPAR $\gamma$ 1- or AdGFP-infected mice were stained with PPAR $\gamma$  antibody. (c) Enlargement of (a) (20×) and (d) enlargement of (b) (20×) showing the PPAR $\gamma$ (+) lesion in the aortic roots. (e) and (f) (20×) showing the PPAR $\gamma$ (+) lesion in the liver. Error bars indicate SEM. \* $P < 0.05$  vs the AdGFP group (C). Scale bar 100  $\mu$ m. N