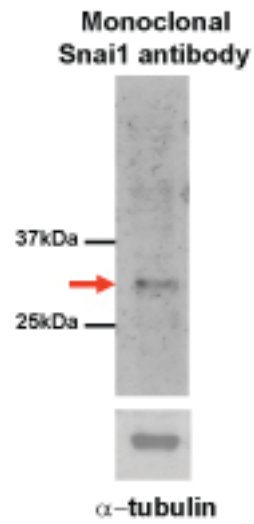


Supplementary Figure 1. Microdissection of cultured palates. Representative micrographs of fused (A) and separated palates (B) showing the oral surface of palates at 5 days in culture. Dashed lines outline the primary palate (1), and presumptive maxillary bone and tooth bud (2), which are carefully excised from the explants prior to RNA extraction. Scale bar = 500 μ m. Anterior part is up. TB = tooth bud.

Figure Supplement 2 Pungchanchaikul P et al., 2010



Supplementary Figure 2. Analysis of Snai1 monoclonal antibody specificity by Western blotting. The antibody specifically reacts with a 30 kDa band (red arrow) in osteoprogenitors as previously reported (Franci et al., 2006).