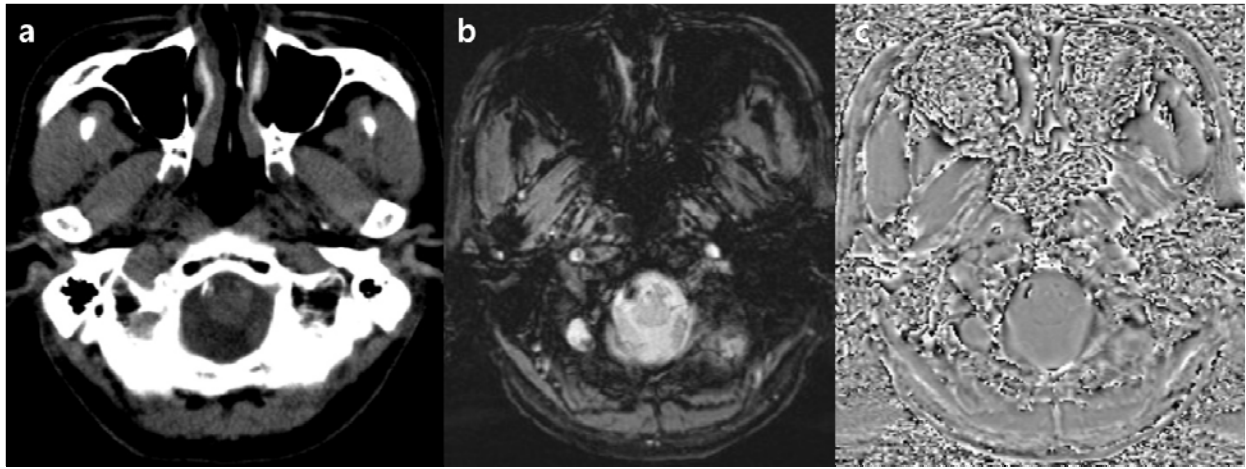


Supplementary. 1. *False-negative intramural hematoma sign* of a patient with dissecting aneurysm in left distal vertebral artery. DSA showed dissecting aneurysm (a). Precontrast CT (b) demonstrated large concentric intramural hematoma. SWI showed concentric bright signal (c). However, aliasing effect on phase map occurred due to large hematoma and confused the signal reliability (d).



Supplementary 2. *True-negative intramural hematoma sign* of a patient with vertebral artery calcification. Precontrast CT showed calcification in right vertebral artery (**a**). SWI showed dark signal (**b**). However, phase map showed dark signal as opposed to dissection in which phase map shows bright signal (**c**).