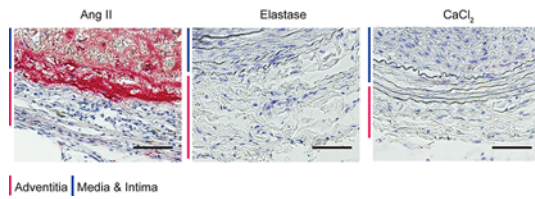


Schema of the AAA tissue

Supplementary figure 1. Schema of the collection of tissue samples from the abdominal aortic aneurysm (AAA) during elective surgery. Longitudinal tissue strips were collected from the infrarenal, non-dilated, segment of the aorta (Neck) to the region of maximal dilation of the aneurysm (Sac).



Supplementary figure 2. Oil red O stain of dissected aorta tissue, showing the accumulation of ectopic adipocytes in the aortic adventitia. Such accumulation has not been previously observed in the aortic adventitia of existing rodent models, including the angiotensin II-induced model (Ang II), the elastase-induced model (Elastase), and the calcium chloride-induced model (CaCl₂). Scale bar on images is 100 μm.