

ORCID@PolyU: the journey so far

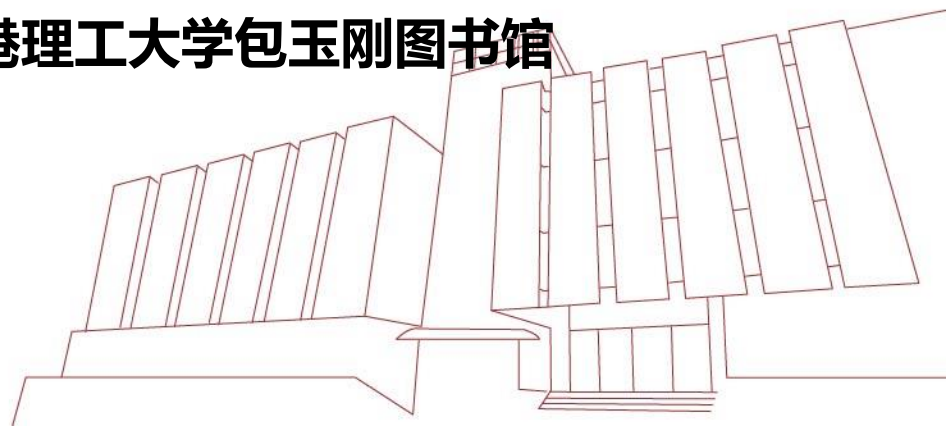
ORCID@PolyU: 回顾与展望

By:

**Janice CHIA, Head (Research Support), Pao Yue-kong Library,
Hong Kong Polytechnic University**

谢佳燕，部门主任（研究支援），香港理工大学包玉刚图书馆

19 June 2017



Agenda 议程

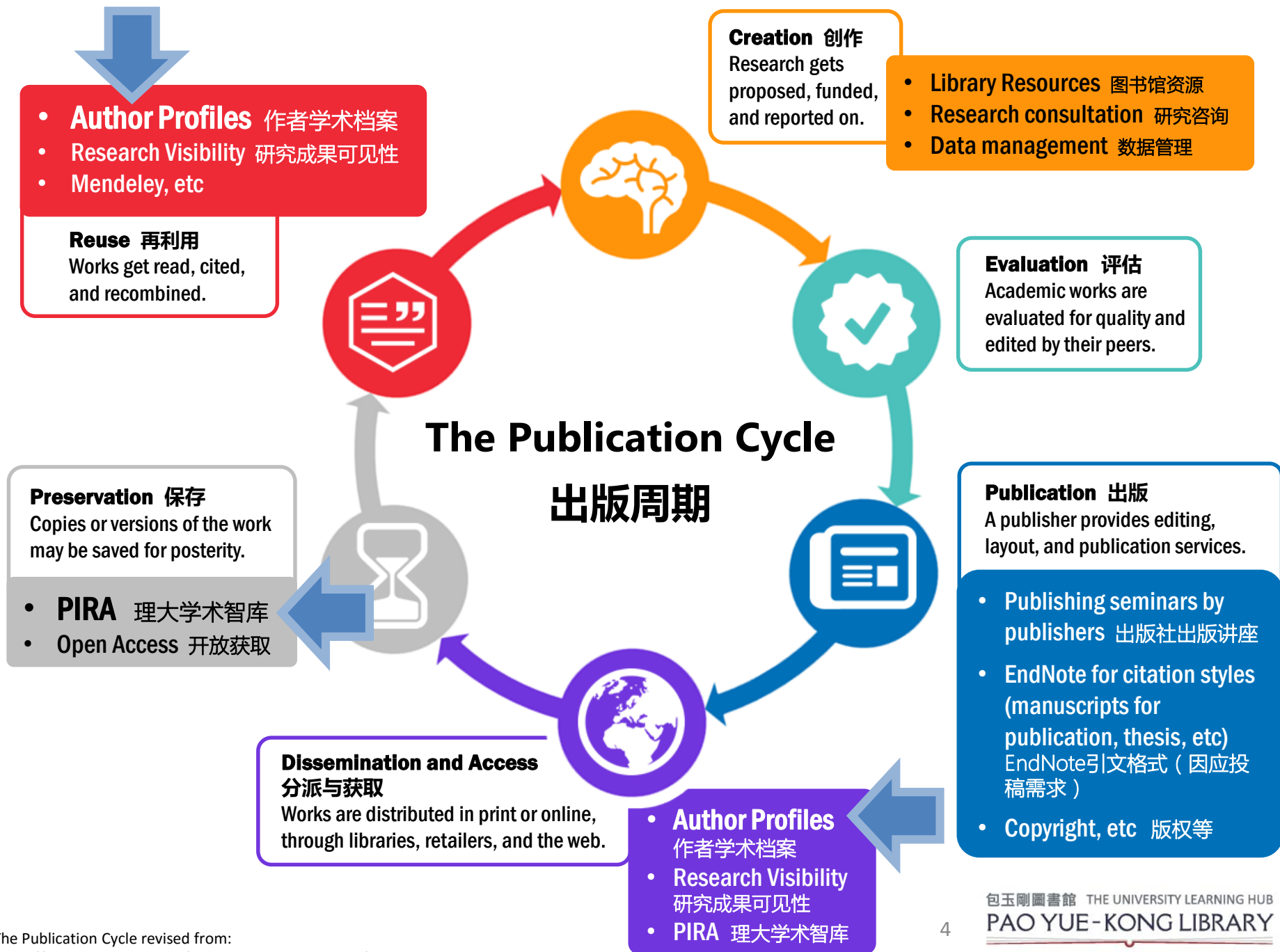
- **Research Support by the Library**
理大图书馆的研究支援服务
- **ORCID @ PolyU**
 - Our journey so far 回顾以往
 - Upcoming plans 近期的计划

Research Support by the Library

理大图书馆的研究支援服务

Provide services to support the **research needs** and **scholarly communication needs** of faculty and research students

为教职员及学生提供支援以满足其**科学研究**及**学术交流**方面的需求



Author Profiles: the many we know

我们所了解的作者学术档案



ORCiD
Connecting Research
and Researchers



Scopus Author ID



RESEARCHERID

WEB OF SCIENCE™

Why are Author Profiles important?

为什么学术档案很重要？

To facilitate accurate retrieval of publications in **Scopus** and **Web of Science** of authors to allow:

- Works to be discovered by other researchers
- Proper attribution given to the author/researcher
- Has a direct impact on period assessments & performance measures for authors/departments (eg: total citation counts; h-index; etc)

帮学者准确地将论著从**Scopus**和 **Web of Science** 提取并展现出来，可以:

- 让论著更易被其他学者发掘到
- 帮助作者/学者匹配其名下所有的论著
- 对作者及学院的阶段评估和绩效考核有直接影响（比如：总引用次数，h指数等）

ORCID registration at PolyU

理大ORCID注册

In February 2015, the University had required all academic staff to register for an ORCID ID with technical assistance and training provided by the Library.

2015年2月，大学要求所有学术人员注册ORCID，与此同时图书馆会提供技术方面的支持以及相关培训。



By April 2015, with the Library's assistance, over 97% of academic staff and 96% of research personnel had registered for an ORCID ID.

截至2015年4月，在图书馆的帮助下，超过97%的学术人员以及96%的研究人员已经注册了ORCID。

Staff received email with personalized ORCID registration hyperlinks

注册链接发至邮箱 教职员通过学校账号登陆注册ORCID



Please click the button below to register, or connect your existing ORCID account to the PolyU on or before 13 March 2015.

Click the link to access platform

点击链接即可进入注册平台



User-friendly platform for ORCID registration

注册平台简单易操作

ORCID

Pao Yue-kong Library, The Hong Kong Polytechnic University ?

has asked for the following access to your ORCID Record



- Read your ORCID record
- Update your affiliations
- Update your biographical information
- Add works
- Update your works
- Add funding items
- Add a person identifier
- Update your funding items
- Add education or employment

☒ Allow this permission until I revoke it.
You may revoke permissions on your account settings page. Unchecking this box will grant permission this time.

This application will not be able to access your private info in your ORCID record.

Just 3 steps for
registration to be
completed in less than
2 minutes

只需三步，
2分钟内完成注册

Pre-filled personalized
information
已经填好的个人信息

First name: Scholar * ?
Last name: TSE
Email: scholar@polyu.edu.hk *

Re-enter email *
Create an ORCID password * ?
Confirm password *

Your ORCID iD connects with your ORCID Record that can contain links to your research activities, affiliations, awards, and more. You control this content and who can see it. **Please fill in this part**

By default, who should be able to see information added to your ORCID Record?



Email frequency

The ORCID registry provides notifications about things of interest, like changes to your ORCID record and new and events. How often would you like these notifications delivered to you via email?

Weekly summary ▼

2 ☒ I'm not a robot



Terms of Use *

☒ I consent to the [privacy policy](#) and [terms and conditions](#) of use, including agreeing to my data being processed in the US and being publicly accessible where marked Public.

Please tick this box

Deny

3 Authorize

Departmental ORCID Coordinators

部门ORCID协调员

- Each academic department has **a designated administrative staff** to coordinate ORCID ID registration
- **Role:** work with the Library to facilitate and accelerate the registration process
- The Library works with ORCID coordinators to:
 - Learn and support any issues or concerns researchers may have during the registration process
 - Cater to individual department needs
- 每一个学术部门都有一**名指定行政人员**来协助ORCID注册
- **职责：**与图书馆合作，协助并加速注册过程
- 图书馆指导ORCID协调员：
 - 了解和支援研究人员注册过程中可能出现的任何问题
 - 满足各部门个性需求

Author Profiles and Author Pages

作者学术档案及学院主页



ORCID
Connecting Research
and Researchers



Scopus Author ID



RESEARCHERID
WEB OF SCIENCE™

PolyU Institutional Research Archive 理大学术智库

POLYU INSTITUTIONAL
RESEARCH ARCHIVE
SHOWCASE YOUR RESEARCH GAIN GLOBAL EXPOSURE

THE HONG KONG
POLYTECHNIC UNIVERSITY
香港理工大学

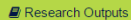
包玉刚图书馆 THE UNIVERSITY LEARNING HUB
PAO YUE-KONG LIBRARY

Home Research Outputs Researchers Departments and Schools Patents Theses Help

LEONG, Hong-va



Profile



Research Outputs

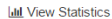


Bibliometrics

Update my Profile



Network Lab



View Statistics



Email Alert



RSS Feed

Author Identifications

ORCID 0000-0001-7682-9032

Author ID (Scopus) 7005127948

Profile



LEONG, Hong-va 梁匡革

Associate Professor

Department of Computing

Faculty of Engineering

Social Contacts

Personal Page

2766 7243

cshleong@polyu.edu.hk

Research Interests

Parallel and distributed computing
Distributed databases
Mobile computing
Internet computing

Department Webpage 学院主页

ENVISION FUTURE COMPUTING
COMPUTING FOR THE FUTURE

Home People Academic and Teaching Staff Dr LEONG Hong-va

PEOPLE

Academic and Teaching Staff

Academic Advisor & Advisory Committee

Honorary / Adjunct / Visiting Appointments and Professors of Practice

Supporting Staff

Research Staff and Students

Programme Leaders and Departmental Liaison Officers



DR LEONG HONG-VA

Associate Professor

BSc, MPhil(CUHK); PhD(California); MACM; MIEEE

cshleong@comp.polyu.edu.hk

PQ734

(852) 2766 7243

Personal Homepage

ACADEMIC AND TEACHING STAFF

RESEARCH INTERESTS

Parallel and Distributed Computing, Distributed Databases, Mobile Computing, Internet Computing

BIOGRAPHY

Dr Leong graduated from the University of California at Santa Barbara in 1994 and joined the Hong Kong Polytechnic University. He received his undergraduate and first graduate degree from the Chinese University of Hong Kong. Since then, he had been working as teaching and research assistants throughout his graduate career and held several scholarships and fellowships. He is active in research and has published over 100

WHAT'S NEW

In Celebration of PolyU 50th Anniversary
COMP RESEARCH

Author Profiles and Author Pages

作者学术档案及学院主页

So many profiles & websites
but so little time

So we started asking these questions:

- Which profile is more important for the researcher?
- How can the library help make it easier for the researcher?

这么多学术档案和主页，
却没太多时间去管理

于是我们开始思考：

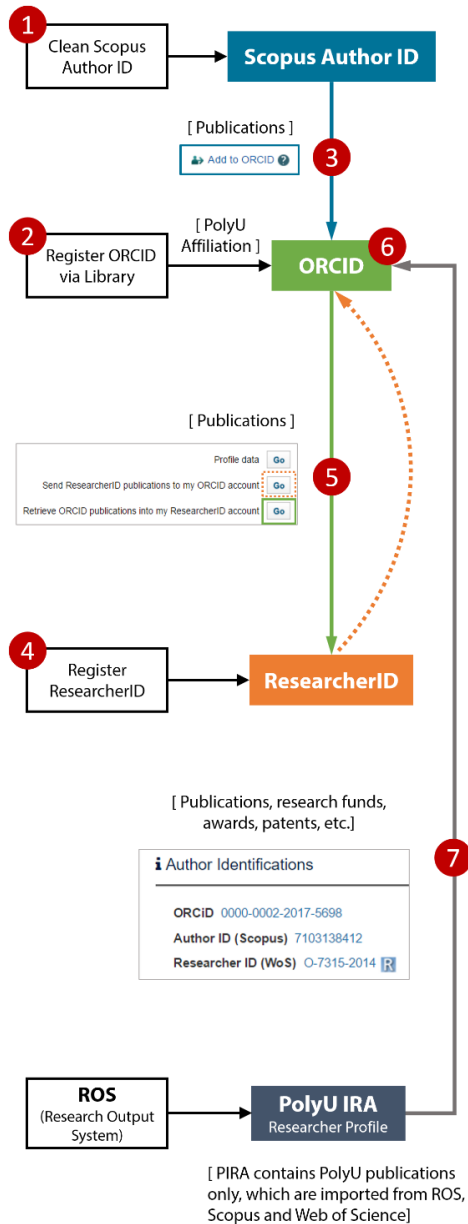
- 哪一个档案对学者来说更重要？
- 我们应该如何提供支持来帮学者减轻管理档案的负担？

Relationship between Author Profiles & PIRA

We drew out a roadmap to better understand the relationships between the different author profiles. It also shows action required by both the Library and Researchers.

包玉剛圖書館 THE UNIVERSITY LEARNING HUB
PAO YUE-KONG LIBRARY





Stage 1: Scopus-ORCID Integration (Completed)

第一阶段：Scopus与ORCID平台的整合（已完成）

Jan – Mar 2016: Scopus Author ID Clean up

May – Nov 2016: Guides, Clinics, Briefing sessions for DOCs

Stage 2: ORCID-ResearcherID Integration (Ongoing based on request)

第二阶段：ORCID与ResearcherID平台的整合（按需提供）

Guides & consultation sessions

Stage 3: PolyU IRA-ORCID Integration (Apr 2017 onwards)

第三阶段：PolyU IRA与ORCID平台的整合（2017年4月开始进行中）

- **Phase 1:** Enrich empty ORCID profiles with PIRA records [Apr – Oct 2017]
- **Phase 2:** Regularly enrich all ORCID profiles (authorized) with PIRA records [Oct 2017 onwards]
- **Phase 3:** Encourage those who have not given Library authorization to do so [Oct 2017 onwards]

PolyU IRA contains research output of all PolyU academic staff. This is in addition to the staff publications that are indexed in Scopus and WoS.

理大学智库囊括理大所有教职员的学术成果。对于那些论文非Scopus及WoS检索的情况，理大智库提供了一个良好的补充。

Home Research Outputs Researchers Departments and Schools Patents Theses Help

CHENG, Eric Ka Wai

Profile

Research Outputs

Bibliometrics

Patents

Update my Profile

Network Lab

View Statistics

Email Alert

RSS Feed

Author Identifications

ORCID 0000-0003-2615-5169

Author ID (Scopus) 16052135500

Link to ORCID profile
链接到ORCID档案

Profile



CHENG, Eric Ka Wai 鄭家偉

Professor

Department of Electrical Engineering

Faculty of Engineering

Social Contacts

Personal Page

2766 6162


eeecheng@polyu.edu.hk

Research Interests

Power electronics
Electromagnetics
Motor drives, railway system, air-craft
EMI and energy saving
Electric / hybrid vehicle
Space engineering, charger system and network
Web-based teaching, virtual laboratory
Electricity safety

Eric Ka Wai CHENG

ORCID ID

 orcid.org/0000-0003-2615-5169

Also known as

Eric Cheng, CHENG, Eric Ka Wai

Country

Hong Kong SAR China

Keywords

Power Electronics, Electric Vehicle,
Aerospace, Switched Reluctance
Motor, Drives

Websites

http://www.ee.polyu.edu.hk/en/people_detail.php?name=EricKa-waiCHENG&cid=1&id=34

PIRA

**Links to PolyU
Institutional Research
Repository**

链接到理大学术智库

Education (1)

University of Bath: Bath, Bath and North East Somer, United Kingdom

1984 to 1990

BSc, PhD (Electronic and Electric Engineering)

Source: Eric Ka Wai CHENG

Created: 2015-04-12

Employment (7)

Funding (9)

Works (381)

An automatic switched-capacitor cell balancing circuit for series-connected battery strings

Energies

2016-01-01 | journal-article

DOI: 10.3390/en9030138

EID: 2-s2.0-84962840799

HANDLE: 10397/61220

WOSUID: WOS:000373625500006

URL: <http://ira.lib.polyu.edu.hk/handle/10397/61220>

Source: Pao Yue-kong Library, Hong Kong Polytechnic University

 Preferred source

**Works are automatically added via trusted sources
(eg: publishers, databases, PolyU Library, etc)**

学术论著可以通过可信赖的组织（包括出版社、数据库、理大图书馆等）自动导入到档案中

ORCID Profile

ORCID档案

Patrick S.W. Fong

ORCID ID

Efficient access to
publication output for
administration &
visibility (for
institutions & authors)

快速获取学术论著，
有助于提升作者及其
论著的可见性，亦有
益于大学管理工作

ResearchGate

Other IDs

Scopus Author ID: 7103138412

ResearcherID: O-7315-2014

▼ Employment (1)

↑↓ Sort

The Hong Kong Polytechnic University: Hung Hom, Hong Kong SAR
China

1994-09 to present



Associate Professor / Associate Head (Partnership) (Department of Building & Real Estate)

Source: Patrick S.W. Fong

Created: 2014-08-05

▼ Works (50)

↑↓ Sort

Online Learners' Reading Ability Detection Based on Eye-
Tracking Sensors

Sensors

2016-09 | journal-article

DOI: 10.3390/s16091457

URL: <http://www.mdpi.com/1424-8220/16/9/1457>



Source: MDPI Submission System

☒ Preferred source

Planned business of tourism students' entrepreneurial
inter...

Appli...

2016 |

DOI:

EID: 2

URL:

Source: Scopus to ORCID

☒ Preferred source

Works are automatically added via trusted sources
(eg: publishers, databases, PolyU Library, etc)

学术论著可以通过可信赖的组织（包括出版社、
数据库、理大图书馆等）自动导入到档案中

IN8..

Future Developments...

未来方向...

- Increase in adoption of ORCID in research administration, in both Faculty level and University level
 - ORCID iD listed in Departmental staff pages
 - To facilitate retrieval of publications for the purposes of review, assessment, reporting, etc.
 - Integration into other Current Research Information Systems for University wide research administration
- 在学者层面及学校层面继续加强ORCID在科研管理方面的应用
 - 学院教职员主页增添ORCID信息
 - 帮助学者更易更准确地取得学术论著以作审查、评估及报告等用途
 - 与其他当前科研信息系统(CRIS)的整合以促进大学整体科研管理效力

Thank you!

谢谢!

 janice.chia@polyu.edu.hk

PolyU Library LibGuides:



Researcher Profiles (http://libguides.lb.polyu.edu.hk/research_visibility/researcherprofile)



ORCID (<http://libguides.lb.polyu.edu.hk/orcid>)