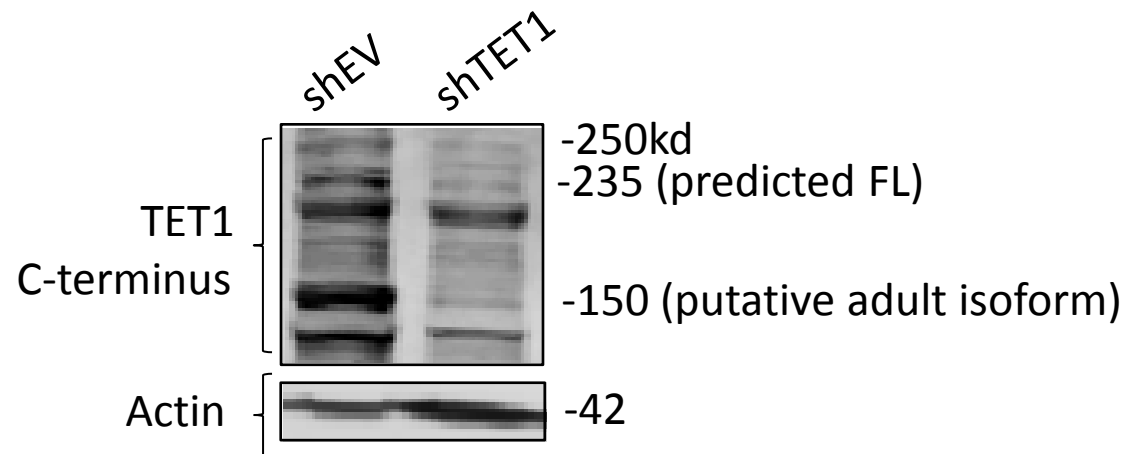
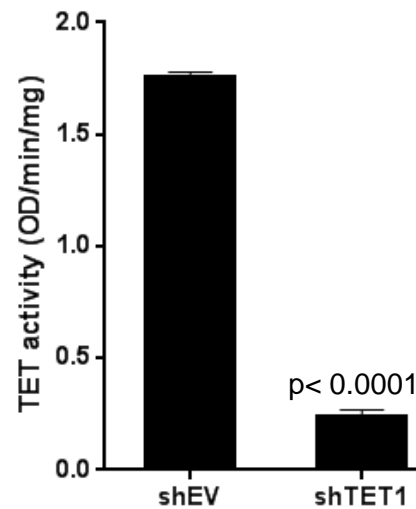


## A) Western blot



## B) TET activity assay



**Supplemental Figure for Editor and Reviewers. TET1 expression in shTET1 HEK293 cells.** Lysates were prepared from shEV and shTET1 HEK293 cell lines and subjected to Western blotting. Lysates were used for western blotting, where blots were probed with an antibody against the C-terminus of TET1 (Abnova, M01 clone 4F4) (A), or assayed for TET1 activity (B). The immunoreactive bands were largely absent that corresponded to the molecular weight predicted for the adult TET1 isoform and for the full length TET1. Activity was assayed with a kit (Epigentek, #P-3087-96) that measures the conversion of a methylated substrate to 5hmC, which is recognized with a specific antibody. The amount of antibody bound is measured using a colorimetric substrate. The activity of the TET enzyme is proportional to the optical density intensity measured. Statistical significance was determined using Student's unpaired T-test and error bars represent SEM.