

Supporting Information - Development of a Multifunctional Nanobiointerface based on Self-assembled Fusion-protein rSbpA/ZZ for Blood Cell Enrichment and Phenotyping

Mario Rothbauer^{1, ‡, *}, Martin Frauenlob^{2, ‡}, Karoline Gutkas², Michael B. Fischer^{3, 4}, Eva-Kathrin Sinner², Seta Küpcü^{2, *} and Peter Ertl¹

¹ Vienna University of Technology, Faculty of Technical Chemistry, Institute of Applied Synthetic Chemistry & Institute of Chemical Technologies and Analytics, Getreidemarkt 9, 1060 Vienna, Austria

² University of Natural Resources and Life Sciences, Department of Nanobiotechnology, Institute for Synthetic Bioarchitectures, Muthgasse 11, 1190 Vienna, Austria

³ Department of Life Science and Biomedicine, Danube University Krems, Dr. Karl Dorrekstrasse 30, 3500 Krems, Austria

⁴ Clinic for Blood Group Serology and Transfusion Medicine, Medical University Vienna, Währinger Gürtel 18-20, 1090 Vienna, Austria

[*mario.rothbauer@tuwien.ac.at](mailto:mario.rothbauer@tuwien.ac.at), seta.kuepcue@boku.ac.at

Supporting information.

Figure S1

Figure S2

Figure S3

Figure S4

Figure S5

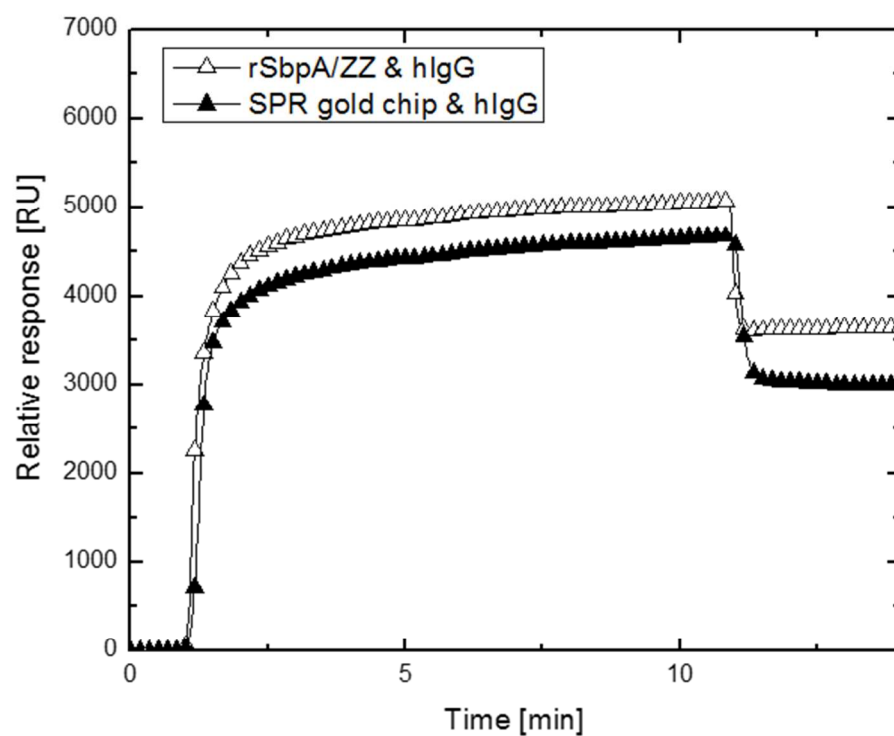


Figure S1. SPR curves of hlgG binding on rSbpA/ZZ-modified and gold sensor surfaces.

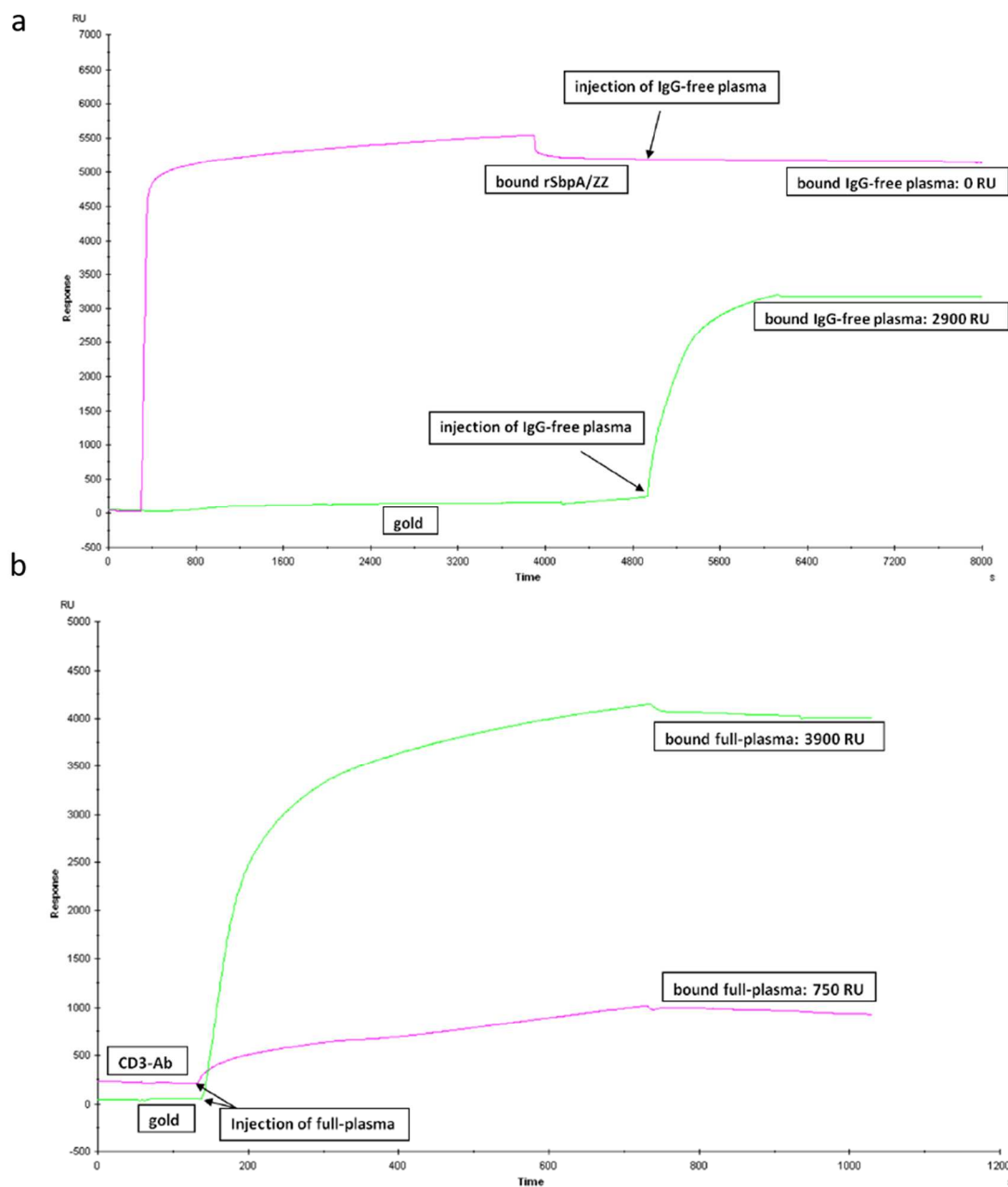


Figure S2. SPR curves for (a) 100 µg/mL hIgG-free and full plasma bound on rSbpA/ZZ-modified and gold sensor surfaces and (b) 100 µg/mL full plasma on CD3-immobilized rSbpA/ZZ and pristine gold sensor surfaces.

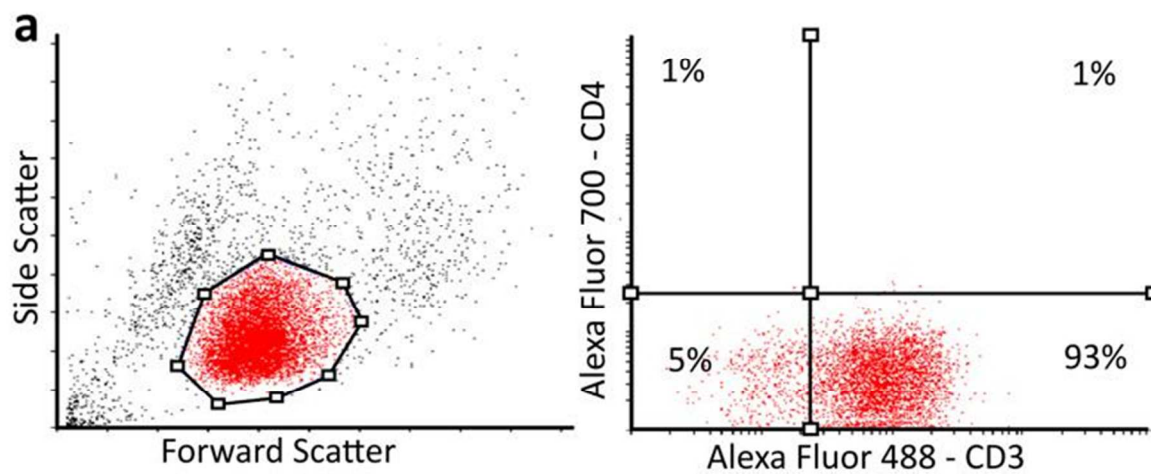


Figure S3. FACS analysis of CD3-positive Jurkat cells for CD3 and CD4 expression patterns.

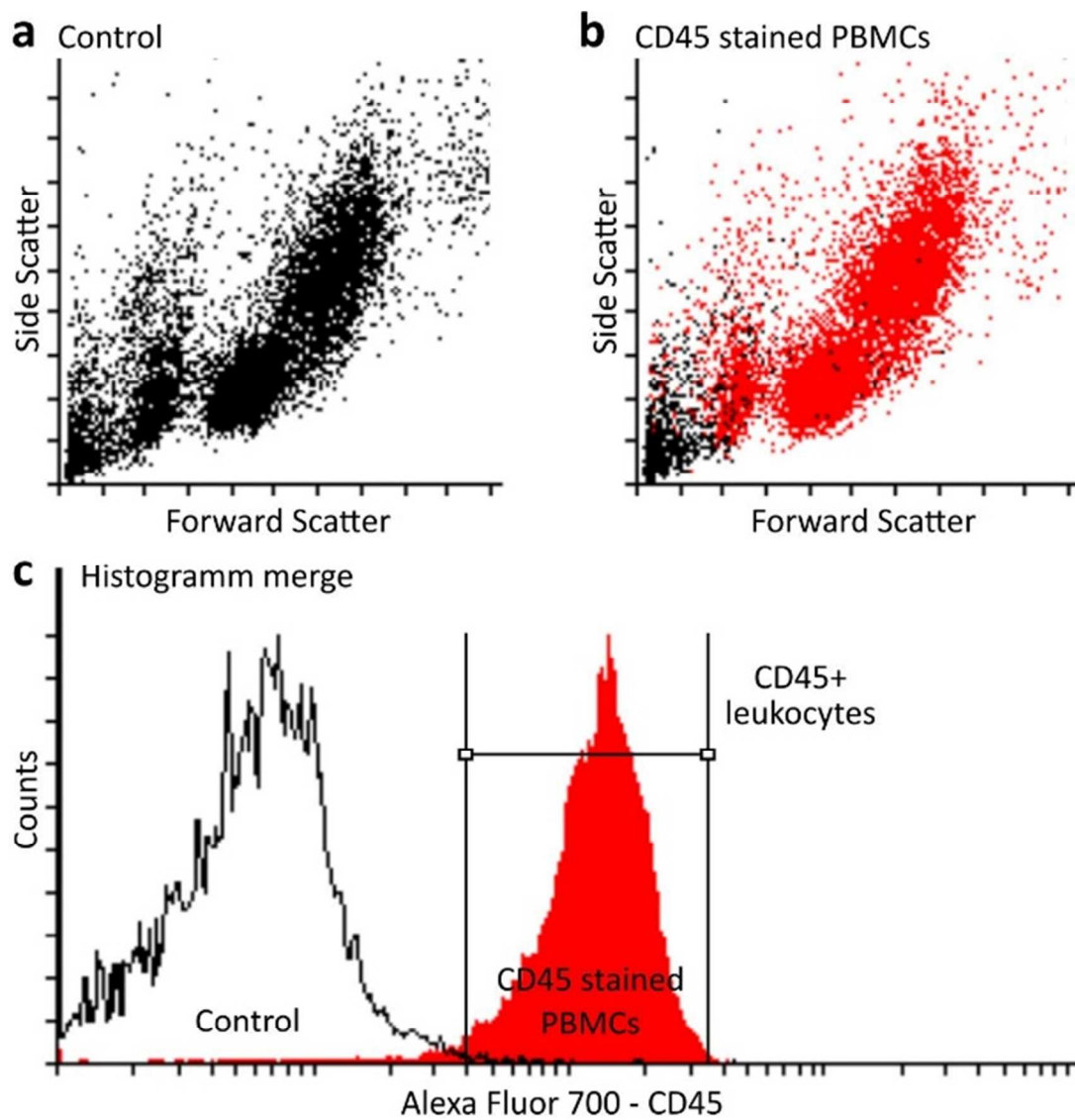


Figure S4. FACS analysis of CD 45-positive leukocytes

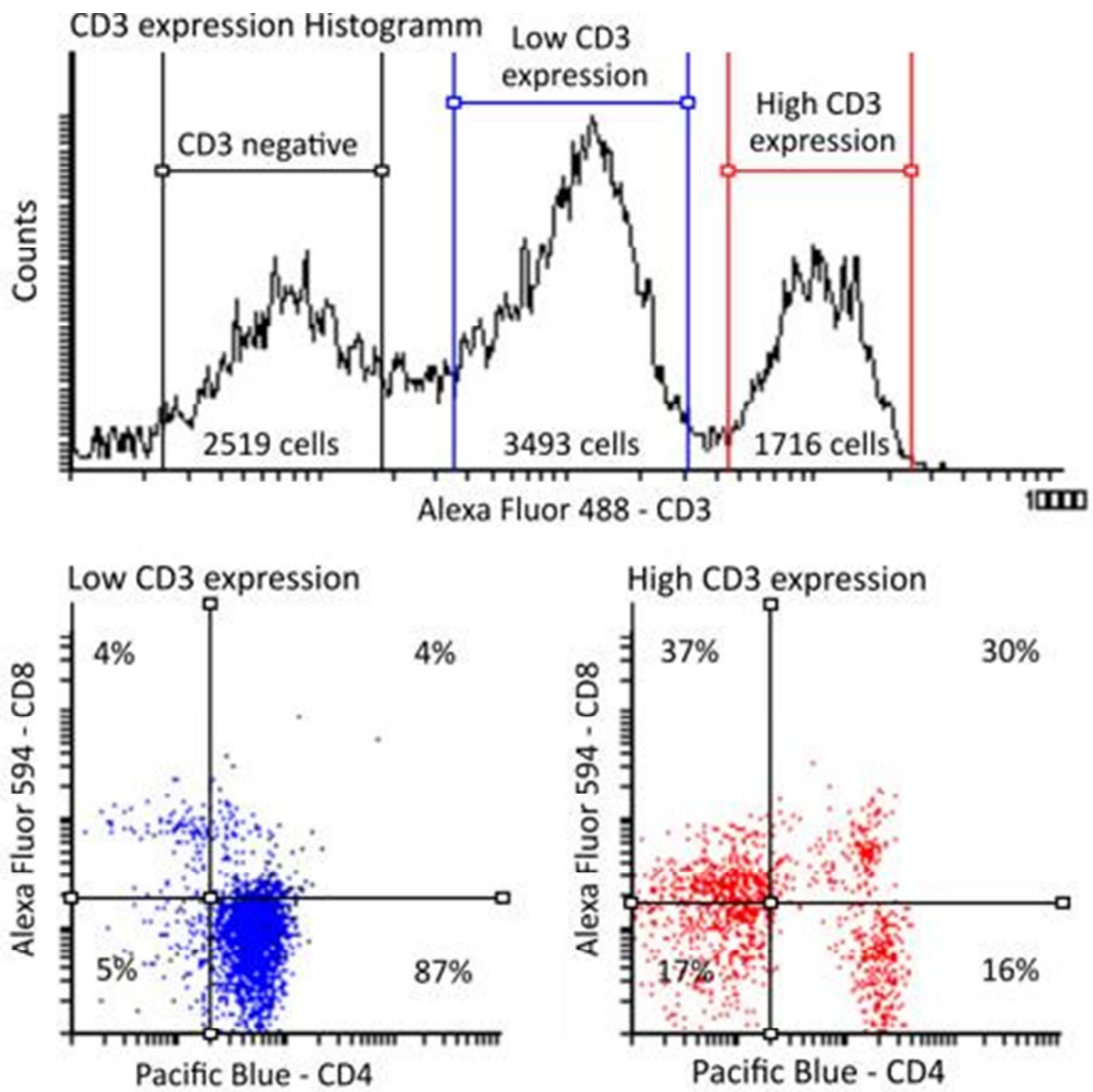


Figure S5. FACS analysis of isolated PBMC samples.