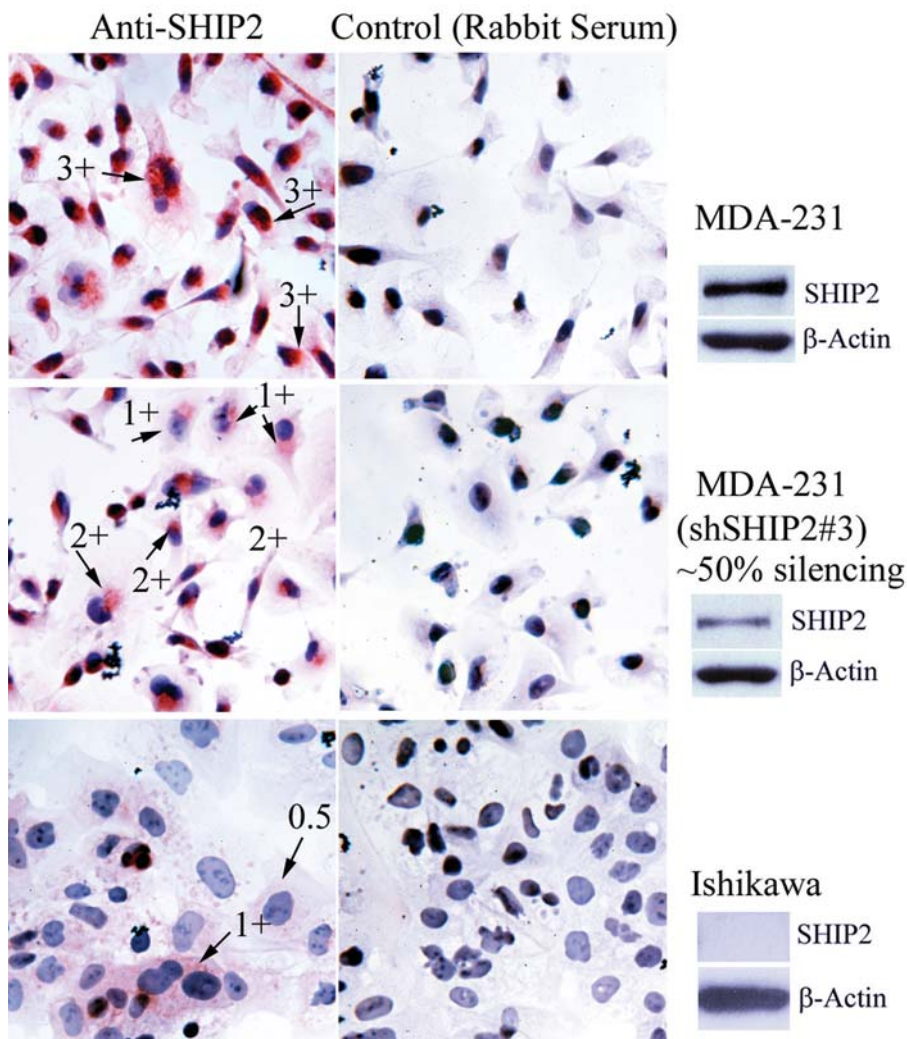
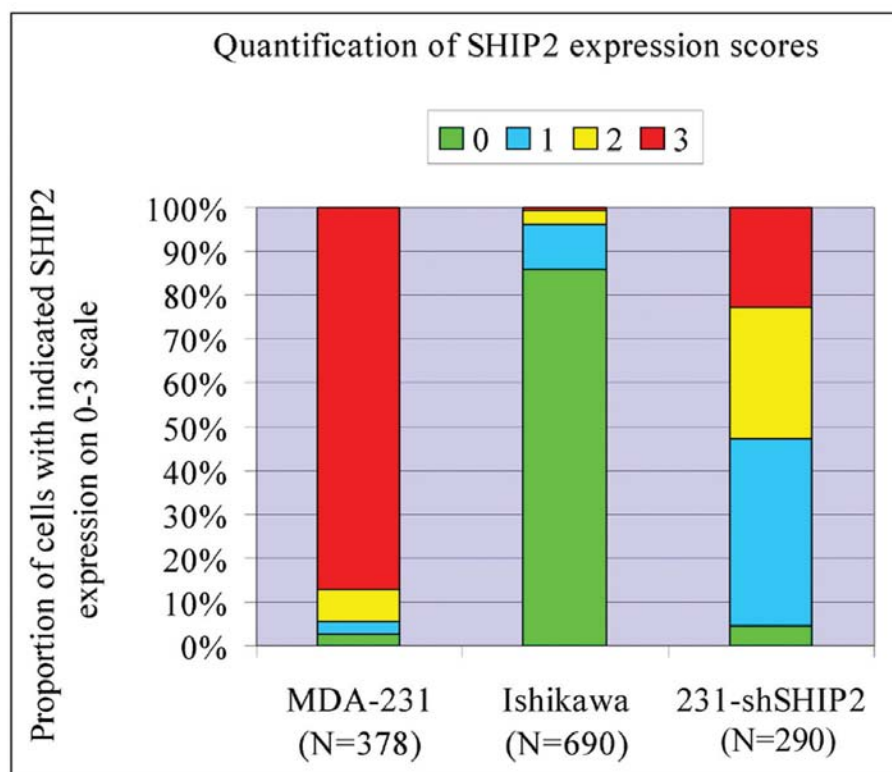


Supplemental Figure 1A

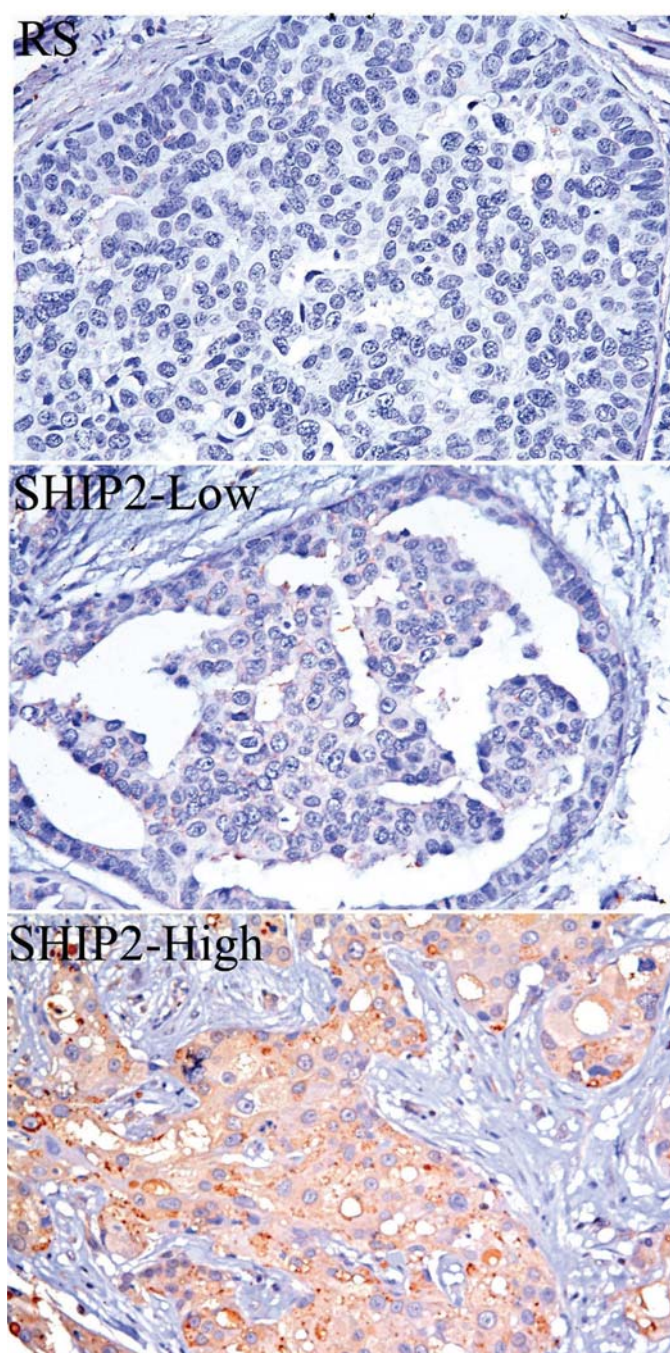


Online supplement figure 1. A Anti-SHIP2 or control rabbit serum staining of SHIP2-positive MDA-231 and SHIP2-negative Ishikawa cells. MDA-231 cells expressing SHIP2-specific shRNA (clone #3/Ref 12) with ~50% suppression of SHIP2 levels is also shown. SHIP2 expression was scored on a scale of 0--3+ (arrows point to representative cells with indicated level of expression). Western blots for SHIP2 and β -actin (loading control) are shown to illustrate the relative levels of SHIP2 protein among the three cell types. **B** Cells from at least ten $\times 60$ fields were evaluated (N for each cell type is shown in parentheses) and proportion of cells with different levels of SHIP2 expression is graphically shown.

Supplemental Figure 1B



Supplemental Figure 2



Online supplement figure 2. Representative immunohistochemistry images ($\times 40$) of control rabbit serum (RS) or anti-SHIP2 antibody.