

Supporting Information

Prolonged Skin Retention of Clobetasol Propionate by Bio-Based Microemulsions: A Potential Tool for Scalp Psoriasis Treatment

Rita Langasco, Sakine Tuncay Tanriverdi, Özgen Özer, Marta Roldo, Massimo Cossu,
Giovanna Rassu, Paolo Giunchedi, Elisabetta Gavini*

***Corresponding author:**

Prof. Elisabetta Gavini, Department of Chemistry and Pharmacy, University of Sassari,
via Muroni 23/a, 07100 Sassari, Italy. Tel: +39 079228752. Fax: +39 079228733. E-
mail: eligav@uniss.it

Table of Contents

Figure S1 a, b. Rheological studies. Flow curves (a) and viscosity versus shear rate at 25°C (b) of unloaded and CP-loaded MEs.

Figure S2. DSC studies. Cooling curves of unloaded and CP- loaded microemulsions.

Figure S3 a-c. Example of AFM error signal (a), 2D (b) and 3D topography (c) images of unloaded ME1.

Figure S4 a-c. Confocal laser scanning microscopy images showing the distribution of DAPI (red) as nucleus marker (a), fluorescein (green) around the nucleus (b). Merged images of A and B (c).

Figure S1 a, b. Rheological studies. Flow curves (a) and viscosity versus shear rate at 25°C (b) of unloaded and CP-loaded MEs.

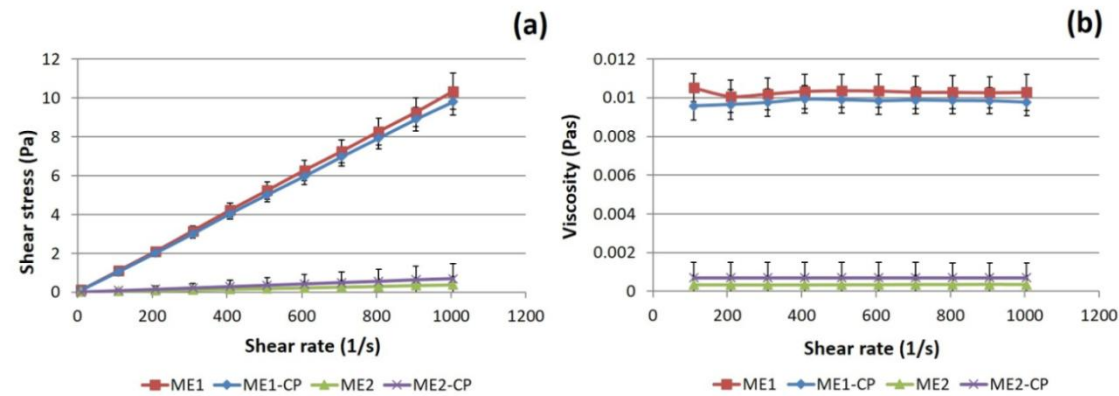


Figure S2. DSC studies. Cooling curves of unloaded and CP- loaded microemulsions.

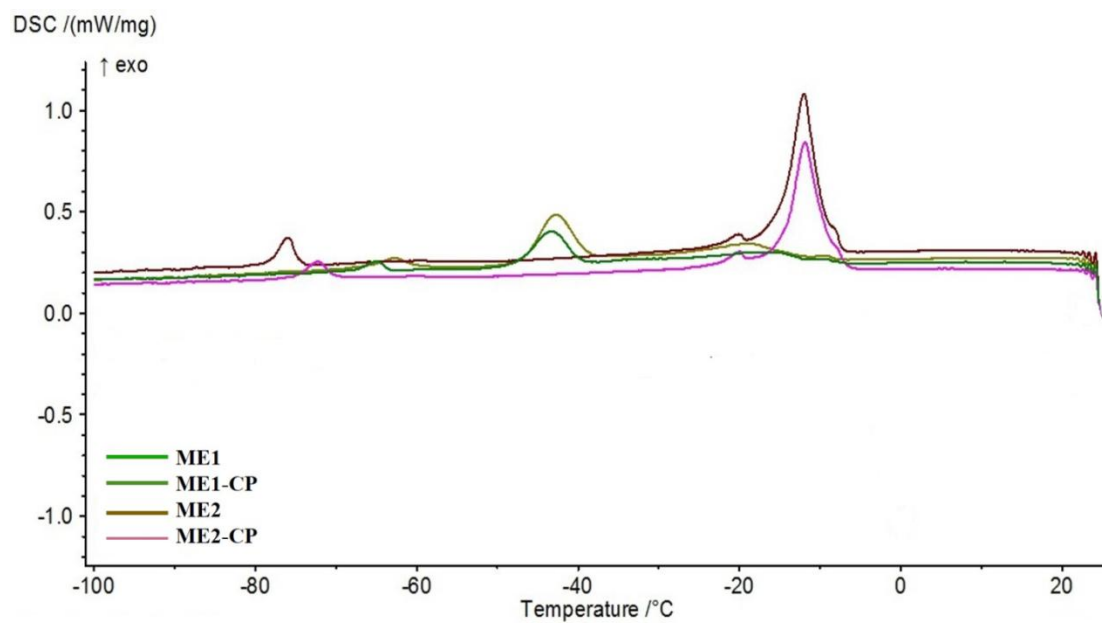


Figure S3 a-c. Example of AFM error signal (a), 2D (b) and 3D topography (c) images of unloaded ME1.

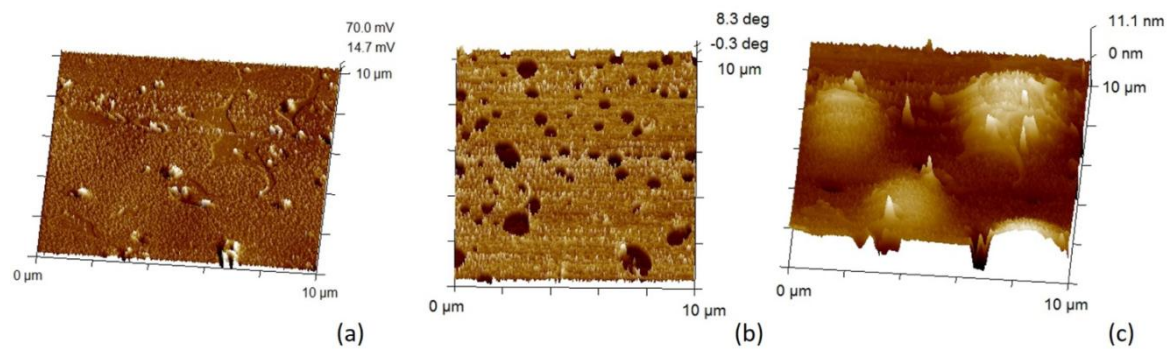


Figure S4 a-c. Confocal laser scanning microscopy images showing the distribution of DAPI (red) as nucleus marker (a), fluorescein (green) around the nucleus (b). Merged images of A and B (c).

