

## Supplementary Data

### Figure Legends

Figure S1. An inverted overlay of LPS composition analysis from *H. pylori* strains, SS1 and G27. The aqueous (a) and phenol (b) fractions depicts the differences in peak heights of SS1 (black) and G27 (red) using GC-MS analysis of FAME and Tri-Sil FAME derivatives.

Figure S2. GC-MS analysis of *E. coli* strain 0113. *E. coli* LPS was analyzed as standard reference.

Figure S.1

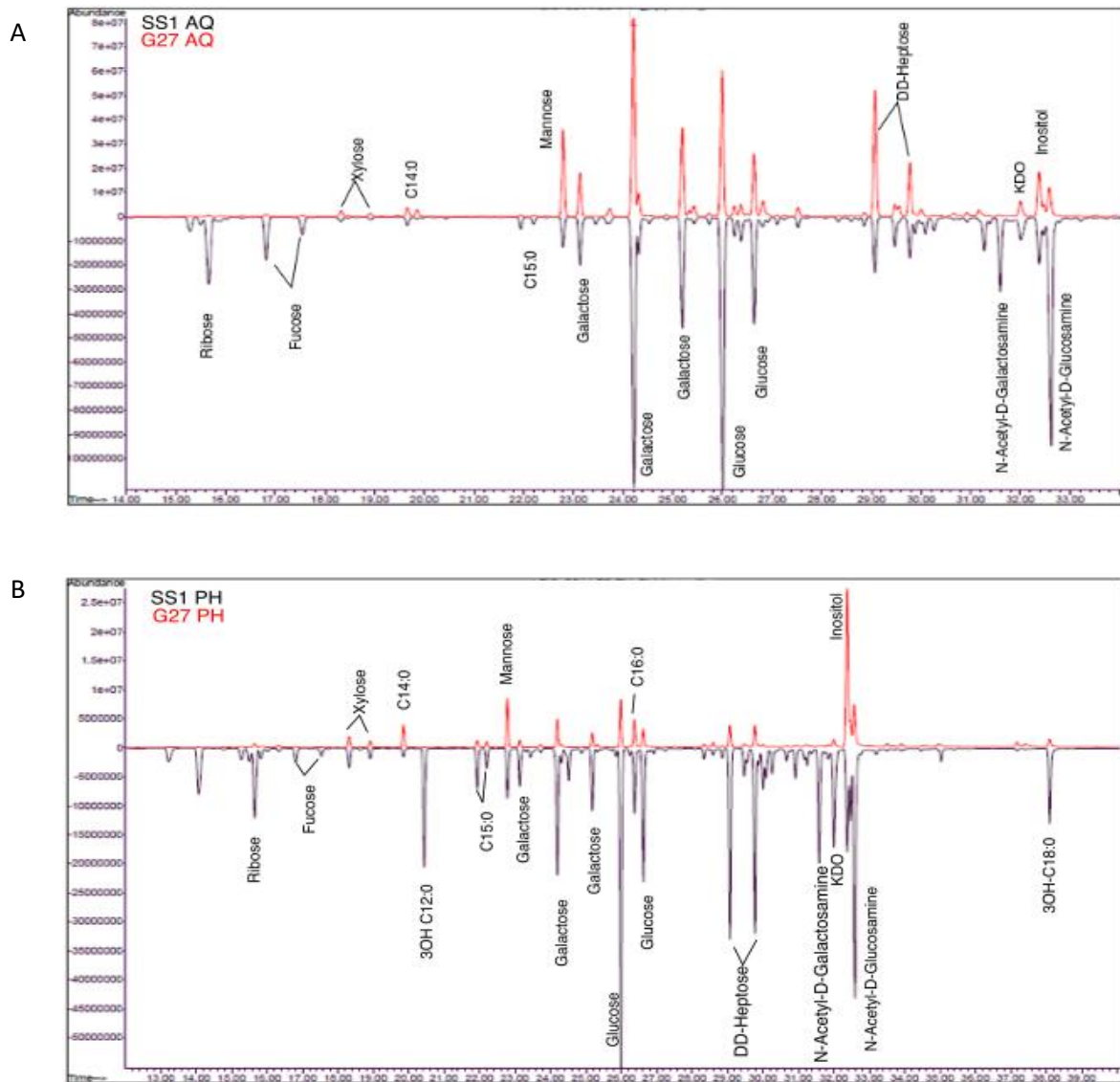


Figure S2.

